

2008-09 Pride Survey National Summary



BRIEFING BY
DOUG HALL
PRESIDENT
INTERNATIONAL SURVEY ASSOCIATES/
PRIDE SURVEY
AUGUST 2009



History of Pride Survey



- Created 1982
- First Pride Survey National Summary 1987
- First national survey to detect re-emerging adolescent drug use in 1992

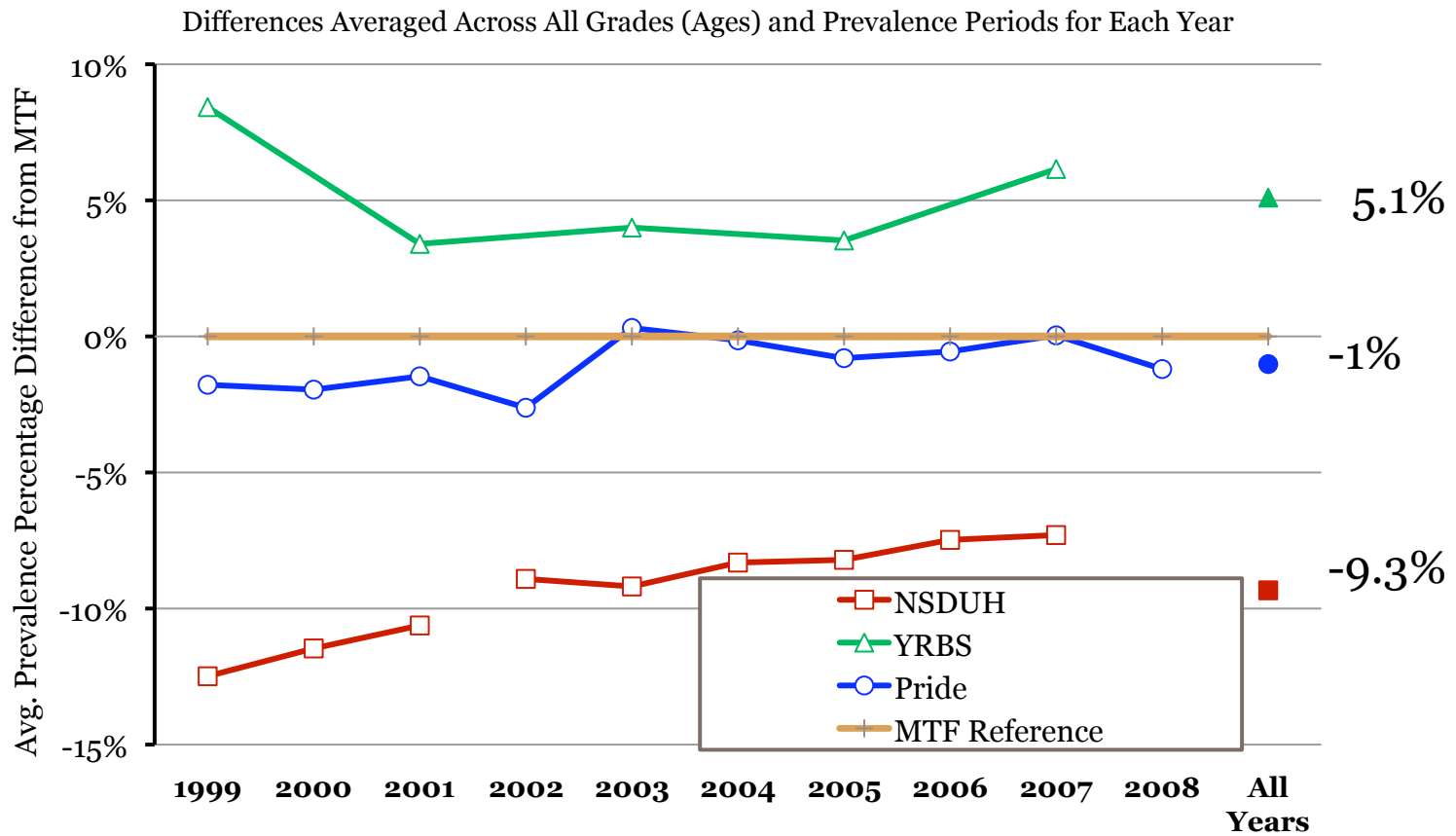


Pride Survey



- Covers grades 6 through 12
- 55,000 building level surveys have been conducted
- 12,000,000 youth and adult respondents
- 30 statewide surveys conducted
- Nation's largest student drug survey

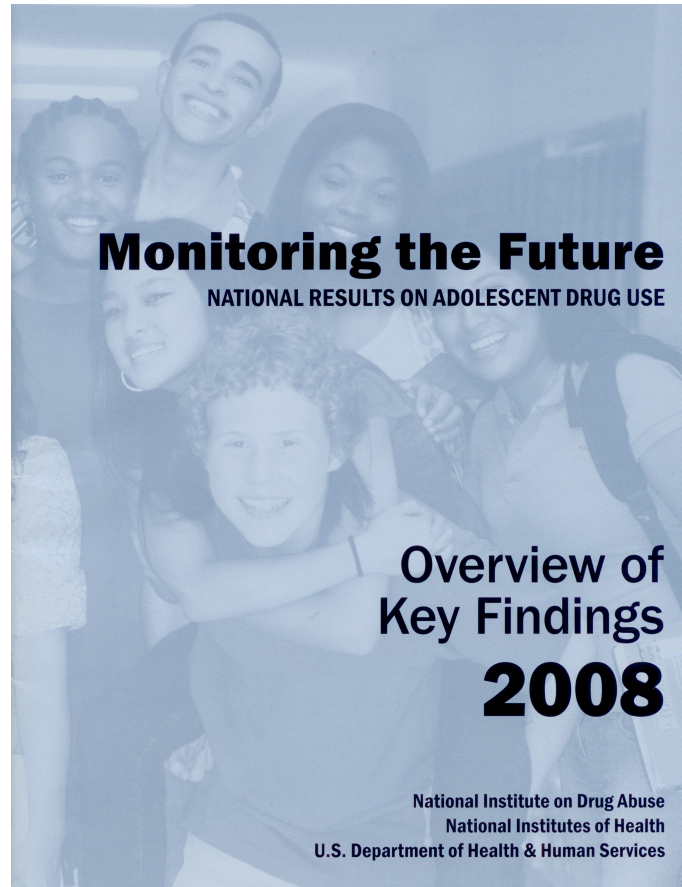
Pride, YRBS & NSDUH prevalence estimate differences from MTF for marijuana use





“Also of note this year is the slight increase in annual prevalence of marijuana use for the three grades combined, reflecting increases in grade 8 and 12, but a slight decrease in grade 10.

None of these changes reached statistical significance, **but they may signal a halt to the long-term gradual decline that we have been reporting for some time.”**



Has the Monitoring the Future prediction come true?

30 YEARS OF ADOLESCENT DRUG USE

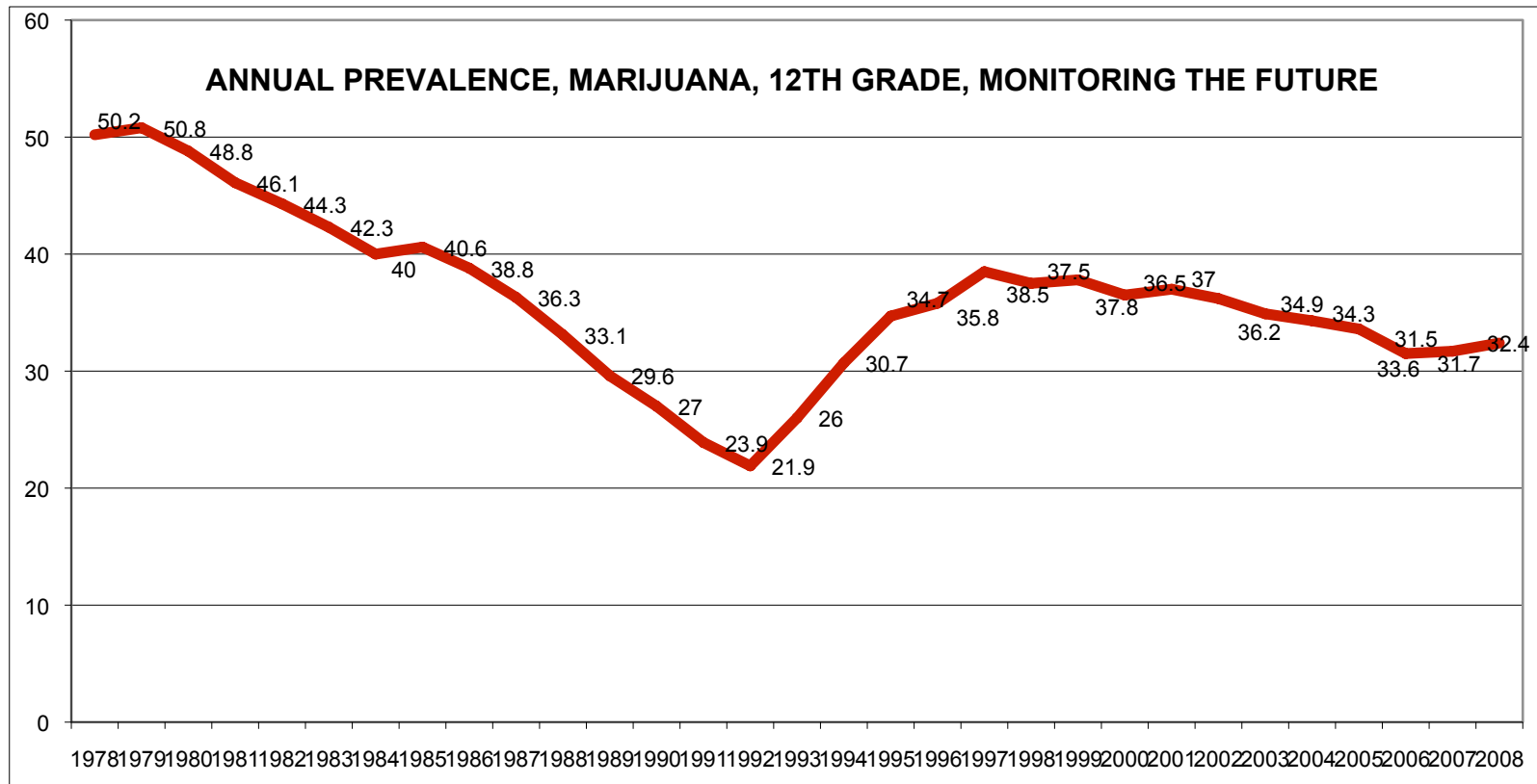


Figure 1: Relating Attitudes to Use

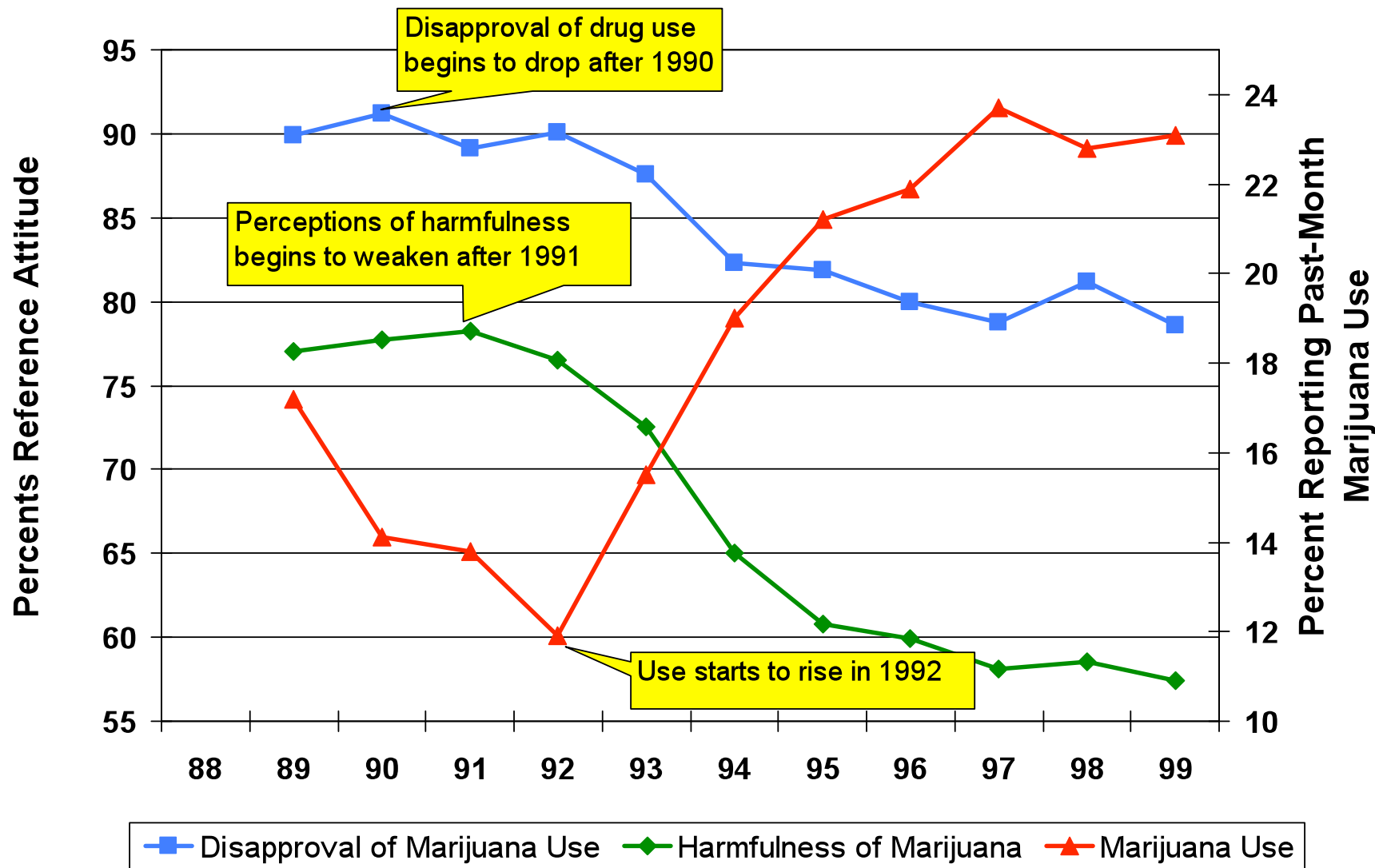
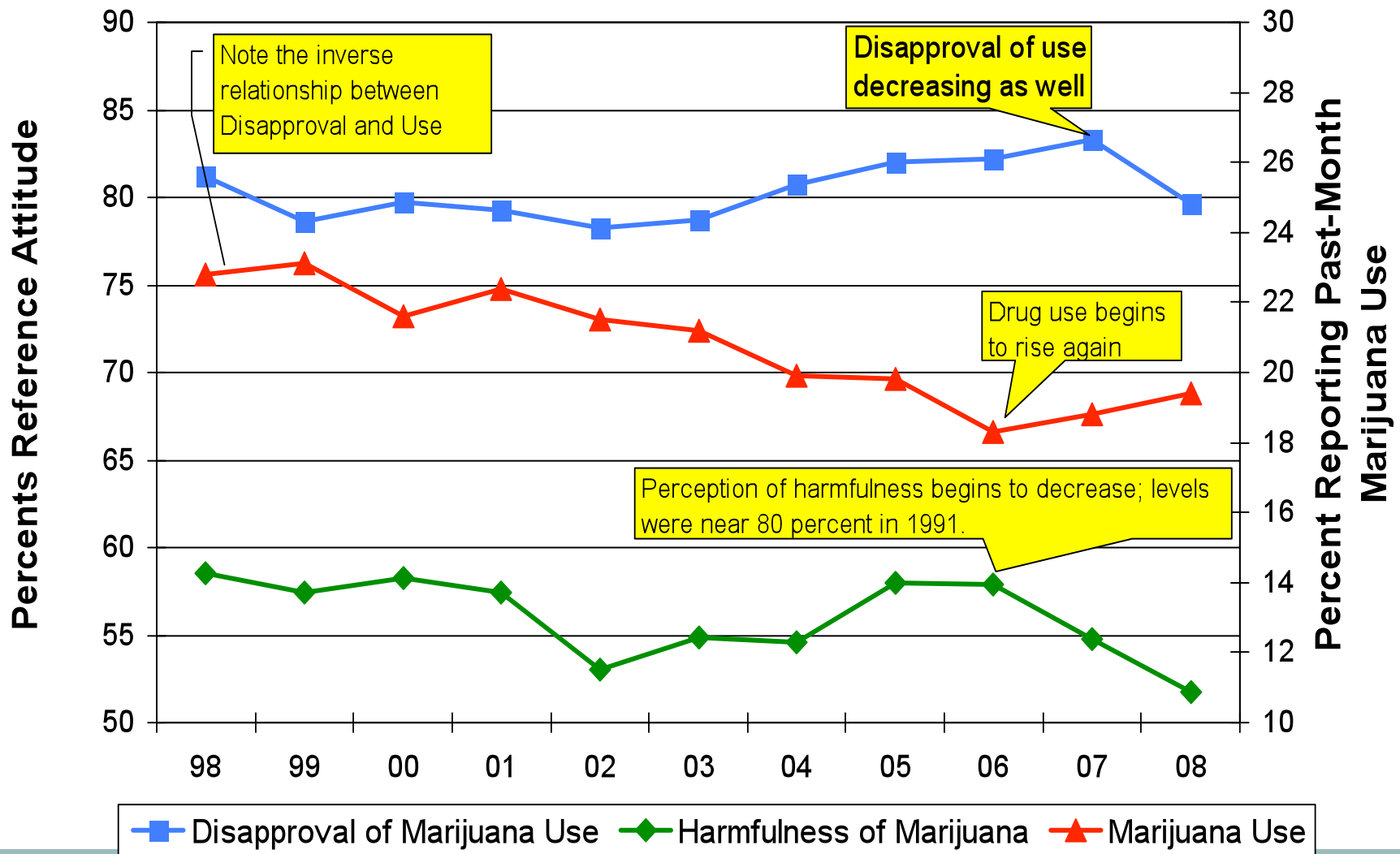


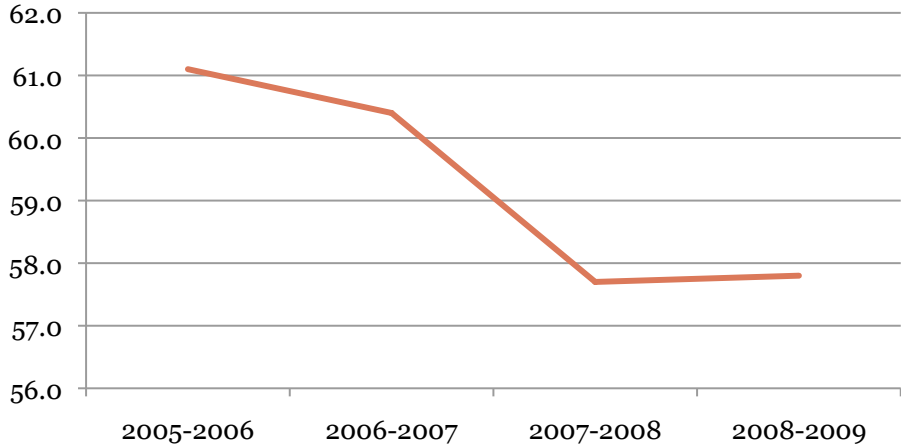
Figure 2: Relating Attitudes to Use: Update



Harmful/Very Harmful



Beer

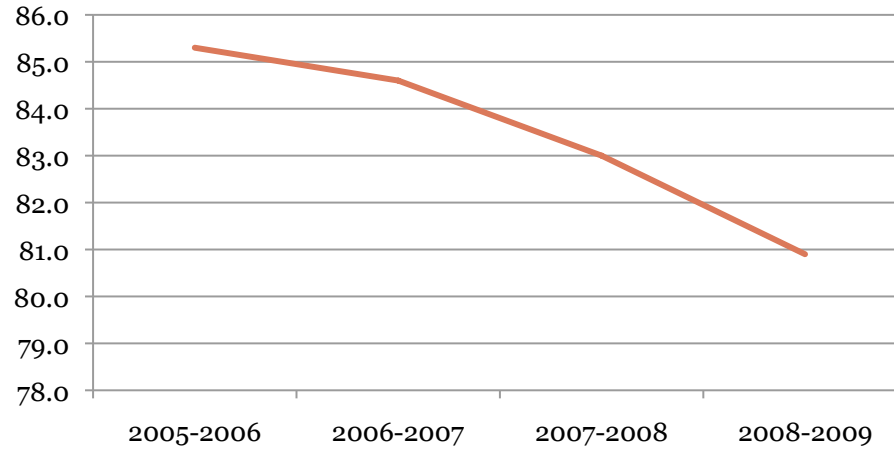


Pride Survey
Grades 6-12

Harmful/Very Harmful



Cigarettes

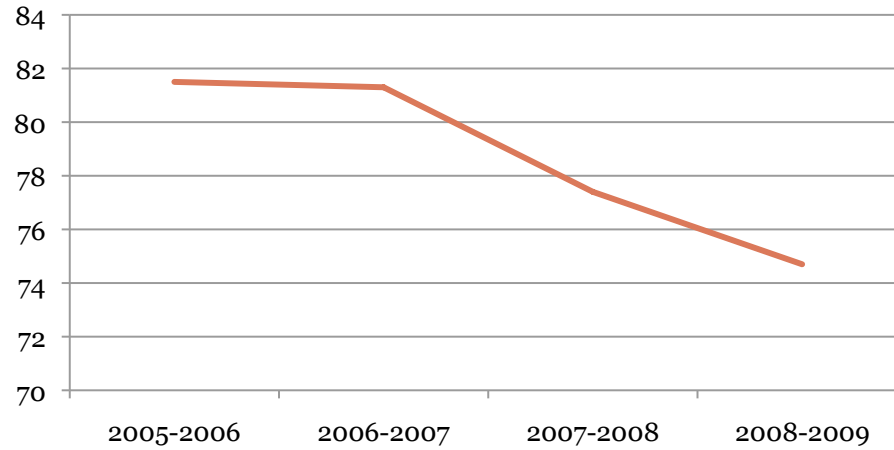


Pride Survey
Grades 6-12

Harmful/Very Harmful



Marijuana



Pride Survey
Grades 6-12

2008-09 Pride Survey National Summary



Total number of students surveyed	447,532
Total number of students in the final sample	122,243
Total number of states in the final sample	25

2008-09 Pride Survey National Summary



Grade	Number in sample
6 th	19,255
7	19,580
8	24,715
9	16,049
10	16,831
11	13,875
12	11,938

2008-09 Pride Survey National Summary



Demographics	Percent in sample
Male	49.4
Female	50.6
African American	15.6
Asian	2.2
Hispanic	9.1
Mixed origin	5.0
Native American	1.8
Other	1.8
White	64.4

Summary of findings, Grades 6-12



Decreases in 30-day prevalence

- There were no statistically significant decreases for grades 6-12

Increases in 30-day prevalence*

- Cigarettes
- Smokeless tobacco
- Cigars
- Any tobacco
- Marijuana
- Ecstasy
- OxyContin
- Prescription abuse (lifetime)

*Statistically significant difference

Summary of findings, Grades 6-8



Decreases in 30-day prevalence

- There were no statistically significant decreases in use for the junior high (grades 6-8)

Increases in 30-day prevalence*

- Cigarettes
- Cigars
- Any tobacco
- Beer
- Marijuana
- Prescription abuse (lifetime)

*Statistically significant difference

Summary of findings, Grades 9-12



Decreases in 30-day prevalence

- There were no statistically significant decreases in use for the senior high (grades 9-12)

Increases in 30-day prevalence*

- Cigarettes
- Smokeless tobacco
- Cigars
- Any tobacco
- Beer
- Wine Coolers
- Liquor
- Any alcohol

*Statistically significant difference

Summary of findings, Grades 9-12



Decreases in 30-day prevalence

- There were no statistically significant decreases in use for the senior high (grades 9-12)

Increases in 30-day prevalence*

- Marijuana
- Inhalants
- Heroin
- Ecstasy
- OxyContin
- Meth
- Any illicit drugs

*Statistically significant difference

During your life, how many times have you taken a prescription drug such as Ritalin, Adderall or Xanax without a doctor's prescription?



	1 or 2 times	3 to 9	10 to 19	20-39	40 +	Total
Junior High						
2007-08	3.1	1.1	0.5	0.3	1.2	6.3
2008-09*	3.4	1.4	0.6	0.3	1.2	7.0
Senior High						
2007-08	4.8	2.7	1.7	1.1	3.5	13.9
2008-09	4.9	2.9	1.8	1.1	3.4	14.2
12th Grade						
2007-08	5.3	3.3	2.1	1.7	4.7	17.1
2008-09	5.1	3.2	2.1	1.6	4.7	16.7
Total						
2007-08	4	1.9	1.1	0.7	2.4	10.1
2008-09*	4.1	2.1	1.2	0.7	2.3	10.4

* Statistically significant increase

Table 7.5: Percentage of Students Who Report Using Drugs - Tobacco and Alcohol

DRUG	GRADE LEVEL	Annual Use			Monthly Use		
		2007-08	2008-09	change	2007-08	2008-09	change
Cigarettes	Junior High	10.8	11.3	0.5*	5.4	5.7	0.3*
	Senior High	28.1	29.1	1.0*	18.3	19.3	1.0*
	12th Graders	35.5	35.0	-0.5	24.4	24.5	0.1
	Total	19.4	19.8	0.4*	11.8	12.2	0.4*
Smokeless Tobacco	Junior High	5.2	5.4	0.2	2.8	2.9	0.1
	Senior High	13.7	15.0	1.3*	8.6	9.8	1.2*
	12th Graders	16.8	17.8	1.0*	11.0	12.0	1.0*
	Total	9.4	10.0	0.6*	5.7	6.2	0.5*
Cigars	Junior High	5.6	5.8	0.2	2.4	2.6	0.2*
	Senior High	19.1	19.4	0.3	9.4	9.9	0.5*
	12th Graders	27.9	27.0	-0.9	13.8	14.2	0.4
	Total	12.3	12.3	0.0	5.8	6.1	0.3*
Any Tobacco	Junior High	13.6	14.1	0.5*	6.8	7.1	0.3*
	Senior High	35.0	35.9	0.9*	22.7	24.0	1.3*
	12th Graders	44.1	43.4	-0.7	29.8	30.6	0.8
	Total	24.2	24.6	0.4*	14.7	15.2	0.5*
Beer	Junior High	19.1	19.7	0.6*	6.5	6.8	0.3*
	Senior High	44.3	44.5	0.2	24.2	25.2	1.0*
	12th Graders	53.6	52.8	-0.8	33.7	34.5	0.8
	Total	31.6	31.6	0.0	15.3	15.6	0.3
Wine Coolers	Junior High	18.5	18.2	-0.3	6.4	6.4	0.0
	Senior High	43.5	42.7	-0.8*	20.7	21.3	0.6*
	12th Graders	51.1	48.8	-2.3*	26.6	26.5	-0.1
	Total	30.9	30.0	-0.9*	13.5	13.6	0.1
Liquor	Junior High	15.7	15.9	0.2	5.7	6.0	0.3
	Senior High	46.7	46.8	0.1	24.8	25.5	0.7*
	12th Graders	57.6	56.6	-1.0	34.3	34.2	-0.1
	Total	31.1	30.7	-0.4	15.2	15.3	0.1
Any Alcohol	Junior High	26.7	26.7	0.0	9.0	9.1	0.1
	Senior High	57.1	56.5	-0.6*	30.1	31.1	1.0*
	12th Graders	66.5	64.6	-1.9*	40.3	40.6	0.3
	Total	41.8	41.0	-0.8*	19.5	19.6	0.1

*Statistically significant difference at .05 level using chi-square with variables year and no-use/use

Table 7.6: Percentage of Students Who Report Using Drugs - Illicit Drugs

DRUG	GRADE LEVEL	Annual Use			Monthly Use		
		2007-08	2008-09	change	2007-08	2008-09	change
Marijuana	Junior High	7.0	7.5	0.5*	4.0	4.3	0.3*
	Senior High	25.2	26.0	0.8*	15.8	16.6	0.8*
	12th Graders	32.0	32.1	0.1	20.3	20.5	0.2
	Total	16.0	16.3	0.3*	9.8	10.2	0.4*
Cocaine	Junior High	1.9	1.9	0.0	1.2	1.2	0.0
	Senior High	6.1	5.7	-0.4*	3.8	3.7	-0.1
	12th Graders	8.2	7.5	-0.7	5.2	4.8	-0.4
	Total	4.0	3.8	-0.2*	2.5	2.4	-0.1
Uppers	Junior High	2.4	2.5	0.1	1.5	1.6	0.1
	Senior High	8.3	8.4	0.1	5.5	5.6	0.1
	12th Graders	10.7	10.6	-0.1	7.1	7.4	0.3
	Total	5.3	5.4	0.1	3.5	3.5	0.0
Downers	Junior High	2.4	2.5	0.1	1.4	1.5	0.1
	Senior High	8.0	8.2	0.2	5.2	5.4	0.2
	12th Graders	9.7	10.3	0.6	6.8	6.8	0.0
	Total	5.2	5.3	0.1	3.3	3.4	0.1
Inhalants	Junior High	4.9	4.9	0.0	2.2	2.1	-0.1
	Senior High	6.0	6.1	0.1	3.4	3.7	0.3*
	12th Graders	5.7	6.2	0.5	4.0	4.3	0.3
	Total	5.5	5.5	0.0	2.8	2.9	0.1
Hallucinogens	Junior High	1.7	1.8	0.1	1.2	1.2	0.0
	Senior High	5.9	5.9	0.0	3.6	3.7	0.1
	12th Graders	8.0	7.9	-0.1	4.8	4.9	0.1
	Total	3.8	3.8	0.0	2.4	2.4	0.0

*Statistically significant difference at .05 level using chi-square with variables year and no-use/use

Table 7.7: Percentage of Students Who Report Using Drugs - Illicit Drugs (continued)

DRUG	GRADE LEVEL	Annual Use			Monthly Use		
		2007-08	2008-09	change	2007-08	2008-09	change
Heroin	Junior High	1.5	1.6	0.1	1.0	1.0	0.0
	Senior High	3.7	4.0	0.3*	2.7	3.0	0.3*
	12th Graders	4.9	5.3	0.4	3.8	4.0	0.2
	Total	2.6	2.7	0.1*	1.9	2.0	0.1
Steroids	Junior High	2.0	1.9	-0.1	1.1	1.1	0.0
	Senior High	3.8	3.8	0.0	2.7	2.9	0.2
	12th Graders	4.8	4.9	0.1	3.7	4.0	0.3
	Total	2.9	2.9	0.0	1.9	2.0	0.1
Ecstasy	Junior High	1.8	1.9	0.1	1.1	1.2	0.1
	Senior High	5.6	5.9	0.3	3.3	3.6	0.3*
	12th Graders	7.4	7.6	0.2	4.3	4.7	0.4
	Total	3.7	3.8	0.1	2.2	2.3	0.1*
OxyContin	Junior High	1.9	2.1	0.2	1.1	1.2	0.1
	Senior High	6.8	6.9	0.1	3.9	4.2	0.3*
	12th Graders	8.6	8.5	-0.1	5.2	5.3	0.1
	Total	4.3	4.4	0.1	2.5	2.7	0.2*
Meth	Junior High	1.9	1.9	0.0	1.2	1.2	0.0
	Senior High	3.9	3.9	0.0	2.8	3.0	0.2*
	12th Graders	4.7	4.9	0.2	3.6	4.0	0.4
	Total	2.9	2.9	0.0	2.0	2.1	0.1
Any Illicit Drugs	Junior High	11.6	12.0	0.4	6.0	6.2	0.2
	Senior High	28.7	29.3	0.6*	18.2	18.9	0.7*
	12th Graders	34.8	34.7	-0.1	22.6	22.8	0.2
	Total	20.1	20.3	0.2	12.0	12.3	0.3

*Statistically significant difference at .05 level using chi-square with variables year and no-use/use

Contact



DOUG HALL
PRESIDENT, ISA/PRIDE SURVEY
870 INMAN VILLAGE PARKWAY, SUITE 102
ATLANTA, GEORGIA 30344
DOUG.HALL@PRIDESURVEYS.COM
404.577-3045

Links



FULL REPORT

www.pridesurveys.com/customercenter/us08ns.pdf