



## **Questionnaire Report for Parents**

### **Your School**

Anytown, USA

May 11, 2006

# Contents

- 1 Introduction** **1**
- 2 Standard Graphics** **3**
- 3 Percentage Tables** **7**
  - 3.1 Parent Demographics . . . . . 8
  - 3.2 Student Demographics . . . . . 10
  - 3.3 Student Information . . . . . 12
  - 3.4 Community Information . . . . . 20
  - 3.5 Impressions About Drug Use . . . . . 25
  - 3.6 During The Past Year Your Child Has Used . . . . . 29
  - 3.7 How Easy Is It For Students In Your Child’s Grade To Get . . . . . 33
  - 3.8 Safety at School . . . . . 40
  - 3.9 Effectiveness of Solutions . . . . . 44

# List of Tables

3.1	Relation To Child	8
3.2	Marital Status	8
3.3	Ethnic Origin	9
3.4	Sex Of Child	10
3.5	Use Of Tobacco - My Child	10
3.6	Use Of Alcohol - My Child	11
3.7	Use Of Drugs - My Child	11
3.8	My Child Makes Good Grades In School	12
3.9	My Child Gets Into Trouble At School	12
3.10	My Child Attends Church, Synagogue, Etc.	13
3.11	I Set Clear Rules For My Child	13
3.12	I Punish My Child When He/She Breaks The Rules	13
3.13	I Talk To My Child About The Harmful Effects Of Using Tobacco, Alcohol And Drugs	14
3.14	Teachers Talk To Students About The Harmful Effects Of Using Tobacco, Alcohol And Drugs	14
3.15	Our School Works With Parents Regarding Drug Abuse Prevention	14
3.16	Law Enforcement Is Doing A Good Job In Keeping Alcohol Away From Students	15
3.17	Law Enforcement Is Doing A Good Job In Keeping Drugs Away From Students	15
3.18	I Am Afraid My Child Will Be Hurt At School	15
3.19	My Child Takes Part In Gang Activities	16
3.20	My Child Has Been Threatened With A Gun, Knife Or Club At School	16
3.21	A Student Has Threatened To Hit, Slap Or Kick My Child	16
3.22	Our School Sets Clear Rules On Using Drugs At School	17
3.23	Our School Sets Clear Rules On Bullying Or Threatening Behavior	17
3.24	I See Ads On TV That Encourage Me To Talk To My Child About Drug Use	17
3.25	My Child Participates In Community Activities Such as Scouts, Rec. Teams, Youth Clubs, Etc.	18
3.26	My Child Participates In School Activities Such as Band, Clubs, Etc.	18
3.27	The School Has Security (Police) Officer	18
3.28	A Security (Police) Officer Can Prevent Violence At School	19
3.29	Every School Needs A Security (Police) Officer	19
3.30	My Child Has Skipped School Without My Permission	19
3.31	Drug And Alcohol Use Is A Big Problem Facing Youth In My Community	20
3.32	Youth Violence Is A Big Problem In My Community	20
3.33	My Child Has Friends Who Drink Alcohol	21
3.34	It Would Be Okay With Me For My Child To Use Alcohol If He/She Would Not Use Other Drugs	21
3.35	Beer Ads Encourage Underage Drinking	21

3.36 My Child Has Friends Who Use Tobacco . . . . .	22
3.37 My Child Has Friends Who Use Drugs . . . . .	22
3.38 It Would Be Okay With Me For My Child To Smoke A Little Pot If He/She Would Leave Other Drugs Alone . . . . .	23
3.39 My Child Has Had 5 Or More Glasses Of Beer, Coolers Or Liquor Within A Few Hours . . . .	23
3.40 The Alcohol Industry Does A Good Job Of Discouraging Underage Drinking. . . . .	24
3.41 Harmfulness Of Use – Cigarettes . . . . .	25
3.42 Harmfulness Of Use – Smokeless Tobacco (Chew, Etc.) . . . . .	25
3.43 Harmfulness Of Use – Cigars . . . . .	26
3.44 Harmfulness Of Use – Beer . . . . .	26
3.45 Harmfulness Of Use – Coolers, Breezers, Hard Lemonades, Etc. . . . .	26
3.46 Harmfulness Of Use – Liquor . . . . .	27
3.47 Harmfulness Of Use – Marijuana . . . . .	27
3.48 Harmfulness Of Use – Cocaine (Crack, Etc) . . . . .	27
3.49 Harmfulness Of Use – Crystal Meth (Ice, Crank, Etc.) . . . . .	28
3.50 Percent Of Use – Cigarettes . . . . .	29
3.51 Percent Of Use – Smokeless Tobacco (Chew, Etc.) . . . . .	29
3.52 Percent Of Use – Cigars . . . . .	30
3.53 Percent Of Use – Beer . . . . .	30
3.54 Percent Of Use – Coolers, Breezers, Hard Lemonades, Etc. . . . .	30
3.55 Percent Of Use – Liquor . . . . .	31
3.56 Percent Of Use – Marijuana . . . . .	31
3.57 Percent Of Use – Cocaine (Crack, Etc) . . . . .	31
3.58 Percent Of Use – Crystal Meth (Ice, Crank, Etc.) . . . . .	32
3.59 How Easy Is It For Students In Your Child's Grade To Get Cigarettes . . . . .	33
3.60 How Easy Is It For Students In Your Child's Grade To Get Smokeless Tobacco (Chew, Etc.)	33
3.61 How Easy Is It For Students In Your Child's Grade To Get Cigars . . . . .	34
3.62 How Easy Is It For Students In Your Child's Grade To Get Beer . . . . .	34
3.63 How Easy Is It For Students In Your Child's Grade To Get Coolers, Breezers, Hard Lemon- ades, Etc. . . . .	35
3.64 How Easy Is It For Students In Your Child's Grade To Get Liquor . . . . .	35
3.65 How Easy Is It For Students In Your Child's Grade To Get Marijuana . . . . .	36
3.66 How Easy Is It For Students In Your Child's Grade To Get Cocaine (Crack, Etc) . . . . .	36
3.67 How Easy Is It For Students In Your Child's Grade To Get Uppers (Stimulants) . . . . .	36
3.68 How Easy Is It For Students In Your Child's Grade To Get Downers (Depressants) . . . . .	37
3.69 How Easy Is It For Students In Your Child's Grade To Get Inhalants (Glue, Etc) . . . . .	37
3.70 How Easy Is It For Students In Your Child's Grade To Get Hallucinogens (PCP, LSD, Etc) . .	37
3.71 How Easy Is It For Students In Your Child's Grade To Get Heroin (Opiates) . . . . .	38
3.72 How Easy Is It For Students In Your Child's Grade To Get Anabolic Steroids . . . . .	38
3.73 How Easy Is It For Students In Your Child's Grade To Get Ecstasy (MDMA) . . . . .	38
3.74 How Easy Is It For Students In Your Child's Grade To Get OxyContin . . . . .	39
3.75 How Easy Is It For Students In Your Child's Grade To Get Crystal Meth (Ice, Crank, Etc.) . .	39
3.76 How Easy Is It For Students In Your Child's Grade To Get A Gun . . . . .	39
3.77 While At School My Child Feels Safe In The Classroom . . . . .	40
3.78 While At School My Child Feels Safe In The Cafeteria . . . . .	40

---

3.79 While At School My Child Feels Safe In The Halls . . . . .	41
3.80 While At School My Child Feels Safe In the Bathroom . . . . .	41
3.81 While At School My Child Feels Safe In The Gym . . . . .	41
3.82 While At School My Child Feels Safe On The School Bus . . . . .	42
3.83 While At School My Child Feels Safe At School Events . . . . .	42
3.84 While At School My Child Feels Safe On The Playground . . . . .	42
3.85 While At School My Child Feels Safe In The Parking Lot . . . . .	43
3.86 School-based Education About The Harmful Effects Of Drug And Alcohol Use . . . . .	44
3.87 TV Ads On Preventing Drug Use By Youth . . . . .	44
3.88 TV Ads On Preventing Alcohol Use By Youth . . . . .	45
3.89 Religious Institutions Providing Drug Education To Young People . . . . .	45
3.90 Parents Providing Drug Education To Their Children . . . . .	45
3.91 Parents Taking Responsibility For Their Children's Use Of Drugs And Alcohol . . . . .	46
3.92 News Media Keeping Parents/Public Informed About Student Drug Use And Violence . . . . .	46
3.93 Schools Keeping Parents/Public Informed About Student Drug Use And Violence . . . . .	46
3.94 Community Anti-drug Coalition For Keeping Students Drug Free . . . . .	47
3.95 After School Activities For Students At School . . . . .	47
3.96 After School Activities For Students In The Community (Not At School) . . . . .	47
3.97 Treatment For Students Who Are Drug And/Or Alcohol Dependent . . . . .	48
3.98 School Policy On Student Use Of Drugs And Alcohol At School . . . . .	48
3.99 School Policy On Student Violence/Bullying . . . . .	48
3.100 Having A Security (Police) Officer At The School . . . . .	49
3.101 Drug Screening Of Students By The School . . . . .	49

# List of Figures

- 2.1 During the Past Year My Child Has Used Tobacco . . . . . 4
- 2.2 During the Past Year My Child Has Used Alcohol . . . . . 5
- 2.3 During the Past Year My Child Has Used Illicit Drugs . . . . . 6

# Chapter 1

## Introduction

The following graphs and tables are compiled from data collected from parents in your school(s) using the *Pride Questionnaire for Parents*. These data reflect information, impressions and knowledge parents have regarding drug and alcohol use and violence amongst your students. It is important that this report be utilized as part of your drug abuse and violence awareness and prevention programs. We strongly suggest that you:

**COPY THE FOLLOWING PAGES,** (which highlight and graphically summarize drug use and violent behavior by students in your school)

**DISTRIBUTE THEM TO YOUR FACULTY**

**AND SHARE THIS INFORMATION WITH PARENTS.**

Most of all, we strongly encourage a parent meeting at your school to share this information!

**NOTE:** Most drug use occurs at nights and weekends when school is not in session.

**FOR GREATEST SUCCESS IN DECREASING DRUG USE, FACULTY, STUDENTS AND PARENTS MUST WORK TOGETHER TOWARD A DRUG-FREE LIFESTYLE.**

If you have questions about this report, or if you wish to have information on other **Pride Surveys** services and products, please call the **Pride Surveys** Office or write to the following address:

**Pride Surveys**

Janie Pitcock

160 Vanderbilt Court

Bowling Green, KY 42103

1-800-279-6361

1-270-746-9596

[www.pridesurveys.com](http://www.pridesurveys.com)

The following information is for **Pride Surveys** internal use only.

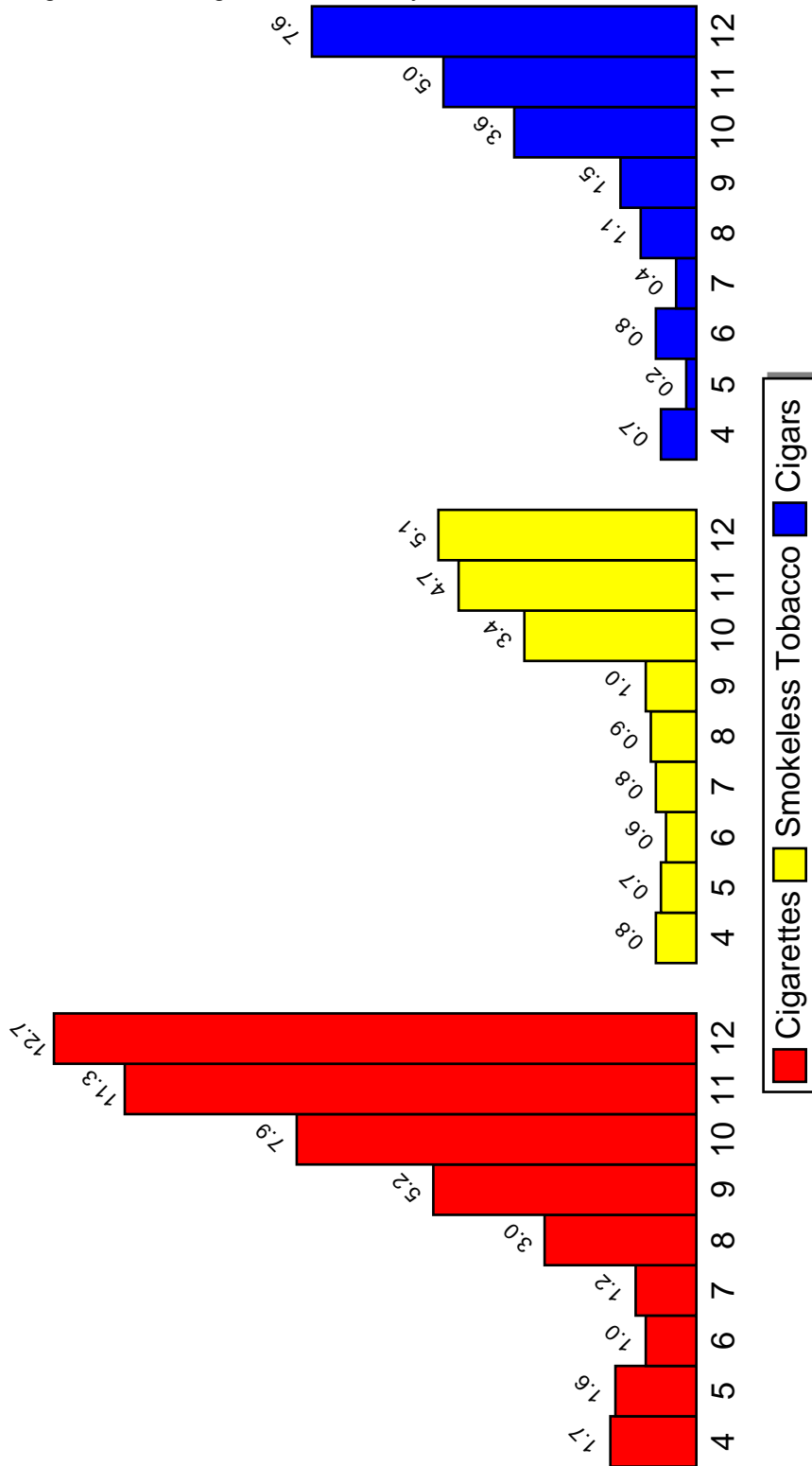
- Data Files: up050001-100
- Filter:

## **Chapter 2**

# **Standard Graphics**

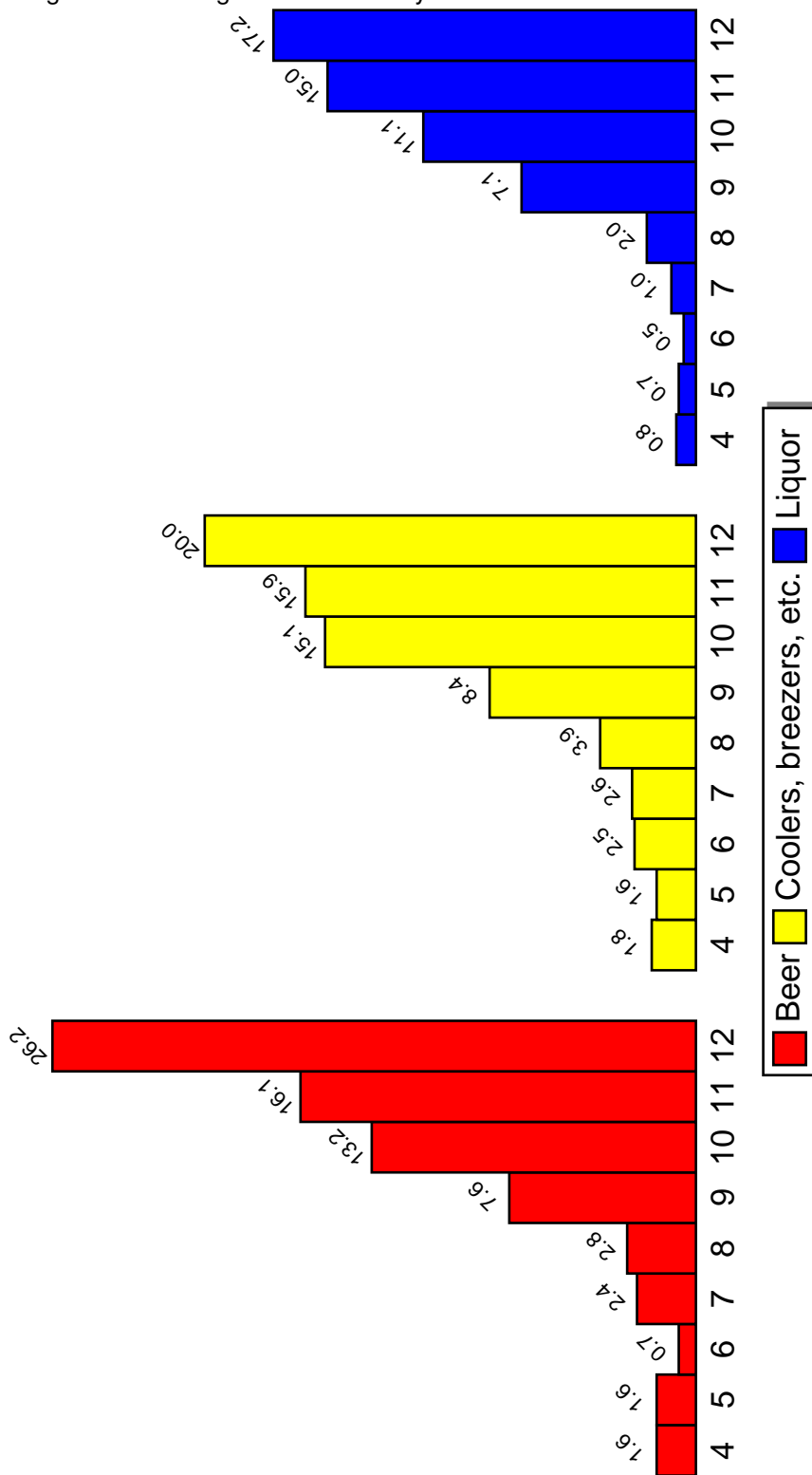
# During the Past Year My Child Has Used Tobacco

Figure 2.1: During the Past Year My Child Has Used Tobacco



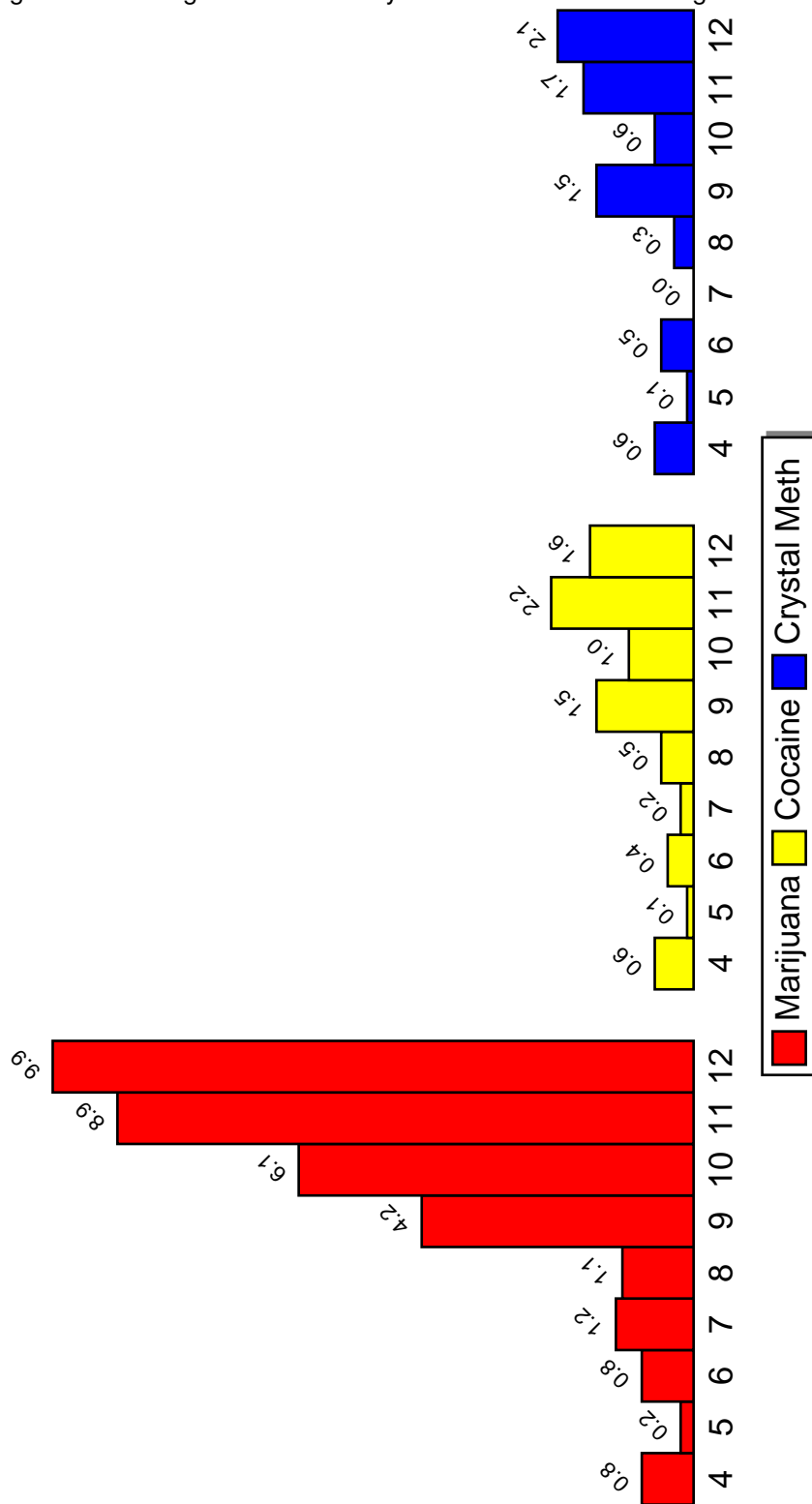
# During the Past Year My Child Has Used Alcohol

Figure 2.2: During the Past Year My Child Has Used Alcohol



# During the Past Year My Child Has Used Illicit Drugs

Figure 2.3: During the Past Year My Child Has Used Illicit Drugs



## Chapter 3

# Percentage Tables

This chapter contains your parent survey results in tabular form. Each table corresponds to an item on the questionnaire. The *N of Valid* column contains the number of parents responding to the item and the *N of Missing* column contains the number of parents not responding to the item. The remaining columns contain the percentages of parents responding to the particular response categories.

The percentage tables of the report appear in the same order as corresponding questions on the questionnaire. The Table of Contents contains the percentage tables by section and gives the page number where each section is located. The List of Tables contains the location of each individual table.

### 3.1 Parent Demographics

Table 3.1: Relation To Child

Grade Level	N of Valid	N of Miss	Mother/Stepmother	Father/Stepfather	Grandmother	Grandfather	Guardian	Other
4th	845	13	84.4	8.4	3.7	0.0	3.0	0.6
5th	883	27	80.2	11.7	4.4	0.3	1.7	1.7
6th	782	15	78.9	15.1	3.1	0.3	2.0	0.6
7th	515	6	80.6	15.9	1.7	0.0	1.6	0.2
8th	653	8	79.5	15.6	2.1	0.0	1.5	1.2
9th	411	7	74.7	18.0	1.9	0.2	2.9	2.2
10th	510	4	81.4	14.7	1.0	0.4	1.0	1.6
11th	366	6	77.0	17.2	1.4	0.0	3.0	1.4
12th	437	8	81.2	12.8	2.1	0.0	2.7	1.1
Total	5402	94	80.2	13.8	2.7	0.1	2.1	1.1

Table 3.2: Marital Status

Grade Level	N of Valid	N of Miss	Married	Separated	Divorced	Remarried	Single	Widowed
4th	839	19	56.7	4.4	10.7	1.5	24.9	1.7
5th	894	16	55.0	4.8	11.7	2.0	23.7	2.7
6th	781	16	72.0	3.2	10.8	2.6	10.5	1.0
7th	516	5	68.2	5.2	8.3	2.7	14.0	1.6
8th	650	11	73.5	3.4	8.0	2.5	10.2	2.5
9th	408	10	66.7	4.4	14.0	2.7	9.3	2.9
10th	510	4	73.5	2.5	9.8	2.2	9.2	2.7
11th	360	12	73.1	3.1	8.1	2.2	9.7	3.9
12th	439	6	69.9	2.3	10.5	3.6	10.9	2.7
Total	5397	99	66.3	3.8	10.3	2.4	15.0	2.3

Table 3.3: Ethnic Origin

Grade Level	N of Valid	N of Miss	White	African American	Hispanic	Asian/Pacific Isle	Native American	Mixed Origin	Other
4th	834	24	36.1	58.5	2.4	0.2	1.4	0.7	0.6
5th	887	23	39.9	52.4	2.0	1.0	2.9	0.9	0.8
6th	774	23	65.2	24.3	4.5	1.9	2.2	0.9	0.9
7th	507	14	63.5	29.0	4.7	0.4	1.0	0.6	0.8
8th	640	21	71.4	21.3	2.7	2.5	0.5	0.8	0.9
9th	405	13	65.4	29.1	3.2	1.2	0.2	0.2	0.5
10th	505	9	72.1	20.2	4.6	2.0	0.6	0.2	0.4
11th	365	7	70.4	23.8	2.2	1.4	0.5	1.4	0.3
12th	436	9	70.2	25.5	2.8	0.2	0.0	0.9	0.5
Total	5353	143	58.5	34.4	3.2	1.2	1.3	0.7	0.7

## 3.2 Student Demographics

Table 3.4: Sex Of Child

Grade Level	N of Valid	N of Miss	Male	Female
4th	848	10	45.4	54.6
5th	901	9	45.5	54.5
6th	791	6	46.8	53.2
7th	516	5	44.4	55.6
8th	658	3	48.9	51.1
9th	415	3	45.3	54.7
10th	509	5	44.2	55.8
11th	367	5	41.7	58.3
12th	439	6	41.2	58.8
Total	5444	52	45.2	54.8

Table 3.5: Use Of Tobacco - My Child

Grade Level	N of Valid	N of Miss	Never Used	Has Tried or Is Using
4th	841	17	98.7	1.3
5th	898	12	98.1	1.9
6th	781	16	98.2	1.8
7th	505	16	97.4	2.6
8th	645	16	97.1	2.9
9th	410	8	93.9	6.1
10th	502	12	88.8	11.2
11th	361	11	84.2	15.8
12th	435	10	80.9	19.1
Total	5378	118	94.5	5.5

Table 3.6: Use Of Alcohol - My Child

Grade Level	N of Valid	N of Miss	Never Used	Has Tried or Is Using
4th	835	23	98.6	1.4
5th	886	24	98.1	1.9
6th	775	22	96.5	3.5
7th	502	19	93.6	6.4
8th	641	20	94.9	5.1
9th	406	12	84.2	15.8
10th	501	13	74.7	25.3
11th	358	14	70.1	29.9
12th	422	23	56.2	43.8
Total	5326	170	88.7	11.3

Table 3.7: Use Of Drugs - My Child

Grade Level	N of Valid	N of Miss	Never Used	Has Tried or Is Using
4th	835	23	99.8	0.2
5th	883	27	99.3	0.7
6th	779	18	99.5	0.5
7th	497	24	98.2	1.8
8th	638	23	98.9	1.1
9th	403	15	94.5	5.5
10th	497	17	93.4	6.6
11th	357	15	91.3	8.7
12th	432	13	86.6	13.4
Total	5321	175	96.8	3.2

### 3.3 Student Information

Table 3.8: My Child Makes Good Grades In School

Grade Level	N of Valid	N of Miss	Never	Seldom	Sometimes	Often	A Lot
4th	848	10	0.2	1.9	18.5	33.7	45.6
5th	899	11	0.1	1.3	20.5	33.3	44.8
6th	787	10	0.1	0.9	16.4	31.6	51.0
7th	515	6	1.0	1.6	17.1	32.4	48.0
8th	657	4	0.0	0.6	17.4	30.0	52.1
9th	416	2	1.0	1.7	24.5	29.6	43.3
10th	512	2	1.4	2.9	14.5	27.7	53.5
11th	368	4	1.4	2.4	17.1	28.0	51.1
12th	442	3	1.1	2.0	13.1	25.8	57.9
Total	5444	52	0.6	1.6	17.8	30.9	49.2

Table 3.9: My Child Gets Into Trouble At School

Grade Level	N of Valid	N of Miss	Never	Seldom	Sometimes	Often	A Lot
4th	849	9	43.2	33.5	19.6	3.1	0.7
5th	902	8	39.2	35.7	21.2	2.7	1.2
6th	790	7	53.4	32.7	12.3	1.3	0.4
7th	515	6	50.7	35.5	9.9	1.9	1.9
8th	659	2	56.1	31.7	9.7	1.7	0.8
9th	413	5	52.1	33.4	10.4	2.2	1.9
10th	512	2	61.7	26.6	9.0	1.8	1.0
11th	365	7	64.4	27.9	5.8	0.8	1.1
12th	444	1	70.7	20.3	7.0	1.8	0.2
Total	5449	47	52.4	31.6	13.0	2.0	1.0

Table 3.10: My Child Attends Church, Synagogue, Etc.

Grade Level	N of Valid	N of Miss	Never	Seldom	Sometimes	Often	A Lot
4th	844	14	4.9	7.3	19.8	22.5	45.5
5th	901	9	6.1	10.0	21.5	18.6	43.7
6th	790	7	6.2	11.0	21.8	19.1	41.9
7th	515	6	7.0	13.6	23.1	17.5	38.8
8th	656	5	7.0	9.1	19.1	23.5	41.3
9th	413	5	8.5	17.2	22.0	18.4	33.9
10th	509	5	9.8	14.9	18.9	15.1	41.3
11th	366	6	9.3	14.8	24.6	15.3	36.1
12th	443	2	12.4	14.4	20.5	15.3	37.2
Total	5437	59	7.4	11.7	21.1	18.9	41.0

Table 3.11: I Set Clear Rules For My Child

Grade Level	N of Valid	N of Miss	Never	Seldom	Sometimes	Often	A Lot
4th	841	17	0.2	0.8	6.2	26.4	66.3
5th	901	9	0.1	0.9	5.4	23.9	69.7
6th	787	10	0.3	0.6	3.9	28.5	66.7
7th	512	9	0.6	0.8	6.4	29.9	62.3
8th	656	5	0.6	0.8	5.0	32.5	61.1
9th	412	6	0.7	1.9	8.3	27.7	61.4
10th	503	11	1.4	1.8	8.3	32.6	55.9
11th	366	6	2.2	2.2	7.9	28.4	59.3
12th	438	7	2.5	1.8	10.0	33.3	52.3
Total	5416	80	0.8	1.1	6.4	28.7	63.0

Table 3.12: I Punish My Child When He/She Breaks The Rules

Grade Level	N of Valid	N of Miss	Never	Seldom	Sometimes	Often	A Lot
4th	844	14	1.2	3.0	16.1	40.3	39.5
5th	892	18	1.3	3.7	15.9	39.3	39.7
6th	777	20	1.0	1.5	21.5	40.5	35.4
7th	503	18	1.2	3.8	25.4	36.6	33.0
8th	649	12	1.5	3.4	21.6	39.4	34.1
9th	408	10	3.7	5.1	20.1	39.5	31.6
10th	506	8	2.8	7.1	20.9	38.9	30.2
11th	352	20	2.8	6.5	19.0	38.1	33.5
12th	434	11	3.2	5.1	26.7	38.9	26.0
Total	5365	131	1.8	4.0	20.2	39.3	34.7

Table 3.13: I Talk To My Child About The Harmful Effects Of Using Tobacco, Alcohol And Drugs

Grade Level	N of Valid	N of Miss	Never	Seldom	Sometimes	Often	A Lot
4th	851	7	0.6	4.7	14.9	28.6	51.2
5th	904	6	1.3	2.9	15.7	27.5	52.5
6th	794	3	1.1	2.4	14.6	31.6	50.3
7th	519	2	1.7	3.5	12.7	29.1	53.0
8th	659	2	0.6	2.0	15.5	32.0	49.9
9th	414	4	3.6	6.8	15.9	26.8	46.9
10th	511	3	3.9	3.9	17.4	28.4	46.4
11th	362	10	5.0	5.8	12.4	29.0	47.8
12th	443	2	3.8	5.0	16.0	27.5	47.6
Total	5457	39	2.0	3.8	15.1	29.1	50.0

Table 3.14: Teachers Talk To Students About The Harmful Effects Of Using Tobacco, Alcohol And Drugs

Grade Level	N of Valid	N of Miss	Never	Seldom	Sometimes	Often	A Lot
4th	822	36	1.1	5.6	30.4	33.0	29.9
5th	867	43	1.5	6.2	29.8	33.3	29.2
6th	777	20	1.9	6.4	34.5	33.2	23.9
7th	500	21	3.8	7.0	33.4	34.6	21.2
8th	643	18	1.9	6.4	36.9	34.8	20.1
9th	401	17	5.7	11.0	36.9	27.4	19.0
10th	496	18	6.0	16.3	37.3	28.6	11.7
11th	355	17	6.5	10.7	37.7	28.5	16.6
12th	428	17	6.5	12.6	38.8	26.2	15.9
Total	5289	207	3.3	8.4	34.3	31.8	22.3

Table 3.15: Our School Works With Parents Regarding Drug Abuse Prevention

Grade Level	N of Valid	N of Miss	Never	Seldom	Sometimes	Often	A Lot
4th	814	44	8.6	12.2	27.4	28.0	23.8
5th	851	59	8.9	14.7	25.5	26.9	24.0
6th	752	45	9.3	12.5	29.9	27.7	20.6
7th	494	27	10.1	12.1	32.8	28.9	16.0
8th	627	34	9.4	13.4	32.2	29.3	15.6
9th	394	24	15.5	16.8	27.9	25.4	14.5
10th	495	19	14.5	21.8	29.9	23.8	9.9
11th	355	17	15.8	15.8	30.4	23.1	14.9
12th	422	23	16.6	20.4	29.4	20.6	13.0
Total	5204	292	11.2	15.0	29.2	26.5	18.1

Table 3.16: Law Enforcement Is Doing A Good Job In Keeping Alcohol Away From Students

Grade Level	N of Valid	N of Miss	Never	Seldom	Sometimes	Often	A Lot
4th	819	39	5.3	11.8	31.9	27.0	24.1
5th	860	50	4.4	13.8	33.4	25.7	22.7
6th	758	39	3.2	13.3	36.8	26.1	20.6
7th	500	21	6.4	15.6	32.8	27.8	17.4
8th	632	29	4.6	14.2	37.0	29.0	15.2
9th	400	18	11.3	21.5	30.5	25.0	11.8
10th	488	26	10.9	21.1	37.7	20.3	10.0
11th	356	16	12.4	21.3	34.6	20.2	11.5
12th	429	16	9.1	25.4	36.6	20.5	8.4
Total	5242	254	6.6	16.4	34.5	25.2	17.2

Table 3.17: Law Enforcement Is Doing A Good Job In Keeping Drugs Away From Students

Grade Level	N of Valid	N of Miss	Never	Seldom	Sometimes	Often	A Lot
4th	817	41	5.5	13.0	31.8	26.1	23.6
5th	852	58	4.9	14.8	34.6	22.8	22.9
6th	756	41	3.7	14.6	35.6	27.2	18.9
7th	498	23	7.0	15.7	34.3	24.7	18.3
8th	630	31	6.0	13.3	37.0	29.8	13.8
9th	398	20	12.8	20.4	32.2	22.6	12.1
10th	490	24	11.0	23.9	34.1	20.8	10.2
11th	354	18	13.3	21.5	35.6	16.9	12.7
12th	427	18	12.2	24.8	34.4	21.1	7.5
Total	5222	274	7.5	16.9	34.4	24.2	16.9

Table 3.18: I Am Afraid My Child Will Be Hurt At School

Grade Level	N of Valid	N of Miss	Never	Seldom	Sometimes	Often	A Lot
4th	838	20	30.3	35.3	24.9	5.7	3.7
5th	893	17	33.9	34.3	24.6	4.0	3.1
6th	778	19	29.2	40.4	23.7	3.5	3.3
7th	506	15	27.7	37.7	24.7	5.1	4.7
8th	646	15	27.4	39.9	24.6	4.8	3.3
9th	411	7	36.0	32.8	22.1	4.6	4.4
10th	510	4	34.9	34.3	24.5	2.7	3.5
11th	362	10	38.4	37.6	16.9	3.6	3.6
12th	436	9	40.6	35.8	17.2	3.9	2.5
Total	5380	116	32.4	36.6	23.2	4.3	3.5

Table 3.19: My Child Takes Part In Gang Activities

Grade Level	N of Valid	N of Miss	Never	Seldom	Sometimes	Often	A Lot
4th	836	22	95.0	1.6	1.4	1.0	1.1
5th	887	23	96.3	1.5	1.4	0.2	0.7
6th	781	16	97.6	0.8	0.6	0.3	0.8
7th	510	11	96.1	1.8	0.2	1.2	0.8
8th	650	11	97.1	0.9	0.2	0.8	1.1
9th	410	8	93.4	1.5	3.2	0.5	1.5
10th	505	9	95.8	1.2	1.0	1.0	1.0
11th	360	12	94.4	1.4	1.1	1.4	1.7
12th	440	5	94.3	2.5	1.4	0.7	1.1
Total	5379	117	95.8	1.4	1.1	0.7	1.0

Table 3.20: My Child Has Been Threatened With A Gun, Knife Or Club At School

Grade Level	N of Valid	N of Miss	Never	Seldom	Sometimes	Often	A Lot
4th	853	5	96.2	2.1	0.8	0.5	0.4
5th	902	8	96.9	1.9	0.8	0.0	0.4
6th	790	7	97.3	1.6	0.4	0.3	0.4
7th	516	5	95.7	2.3	1.6	0.2	0.2
8th	656	5	96.5	1.8	0.8	0.3	0.6
9th	414	4	92.5	3.1	1.9	1.0	1.4
10th	513	1	94.5	2.5	1.6	0.4	1.0
11th	367	5	94.0	2.7	1.4	0.8	1.1
12th	443	2	92.3	3.8	2.3	0.5	1.1
Total	5454	42	95.6	2.3	1.1	0.4	0.6

Table 3.21: A Student Has Threatened To Hit, Slap Or Kick My Child

Grade Level	N of Valid	N of Miss	Never	Seldom	Sometimes	Often	A Lot
4th	851	7	52.4	23.0	17.6	4.1	2.8
5th	897	13	53.8	24.9	17.2	2.0	2.1
6th	783	14	61.3	24.9	9.6	2.2	2.0
7th	513	8	58.1	22.0	14.6	3.1	2.1
8th	648	13	62.7	23.1	10.5	2.2	1.5
9th	414	4	64.0	21.3	10.4	1.7	2.7
10th	506	8	70.4	18.8	6.3	2.6	2.0
11th	366	6	71.6	15.8	9.3	1.6	1.6
12th	436	9	70.2	19.5	7.8	1.4	1.1
Total	5414	82	61.0	22.2	12.3	2.4	2.1

Table 3.22: Our School Sets Clear Rules On Using Drugs At School

Grade Level	N of Valid	N of Miss	Never	Seldom	Sometimes	Often	A Lot
4th	833	25	2.6	2.5	8.6	26.2	60.0
5th	888	22	2.5	3.6	8.9	23.8	61.3
6th	777	20	2.4	1.9	6.0	26.1	63.4
7th	503	18	3.2	3.8	8.0	29.2	55.9
8th	646	15	3.4	4.0	6.3	29.9	56.3
9th	405	13	8.1	5.7	12.1	26.2	47.9
10th	507	7	6.7	6.5	14.2	30.2	42.4
11th	362	10	7.2	6.6	12.2	24.6	49.4
12th	434	11	8.1	4.4	11.1	27.6	48.8
Total	5355	141	4.3	4.0	9.2	26.9	55.7

Table 3.23: Our School Sets Clear Rules On Bullying Or Threatening Behavior

Grade Level	N of Valid	N of Miss	Never	Seldom	Sometimes	Often	A Lot
4th	828	30	3.0	5.4	17.5	28.7	45.3
5th	892	18	3.1	7.0	15.2	23.8	50.9
6th	772	25	3.1	4.7	15.0	29.3	47.9
7th	504	17	3.8	7.3	17.3	28.2	43.5
8th	642	19	3.6	5.9	16.2	33.8	40.5
9th	407	11	8.8	9.1	19.4	27.8	34.9
10th	503	11	9.3	8.9	22.3	29.2	30.2
11th	361	11	8.0	8.6	20.5	26.9	36.0
12th	433	12	9.0	9.9	18.0	30.5	32.6
Total	5342	154	5.1	7.0	17.4	28.5	42.0

Table 3.24: I See Ads On TV That Encourage Me To Talk To My Child About Drug Use

Grade Level	N of Valid	N of Miss	Never	Seldom	Sometimes	Often	A Lot
4th	837	21	1.9	4.8	20.4	29.9	43.0
5th	893	17	2.4	4.8	23.1	28.7	41.1
6th	781	16	1.9	4.4	21.5	35.1	37.1
7th	509	12	2.8	4.7	21.4	33.8	37.3
8th	651	10	1.8	4.8	20.9	40.1	32.4
9th	410	8	6.8	5.6	25.6	32.0	30.0
10th	507	7	4.3	9.1	25.6	33.3	27.6
11th	366	6	5.7	7.1	22.1	33.6	31.4
12th	439	6	5.0	5.2	28.2	35.1	26.4
Total	5393	103	3.2	5.4	22.8	33.2	35.5

Table 3.25: My Child Participates In Community Activities Such as Scouts, Rec. Teams, Youth Clubs, Etc.

Grade Level	N of Valid	N of Miss	Never	Seldom	Sometimes	Often	A Lot
4th	841	17	14.1	14.0	25.6	20.9	25.3
5th	897	13	14.4	13.7	23.3	20.1	28.5
6th	788	9	9.9	10.8	19.0	23.4	36.9
7th	511	10	12.7	11.5	20.0	22.9	32.9
8th	653	8	10.9	12.7	19.0	24.5	32.9
9th	414	4	17.4	14.7	19.8	21.5	26.6
10th	511	3	14.9	11.9	20.9	23.3	29.0
11th	368	4	14.4	13.3	19.0	20.9	32.3
12th	438	7	14.6	12.8	17.8	23.5	31.3
Total	5421	75	13.4	12.8	21.0	22.2	30.6

Table 3.26: My Child Participates In School Activities Such as Band, Clubs, Etc.

Grade Level	N of Valid	N of Miss	Never	Seldom	Sometimes	Often	A Lot
4th	828	30	32.7	19.6	23.2	12.9	11.6
5th	876	34	27.1	20.8	23.1	14.3	14.8
6th	772	25	13.5	12.0	19.0	23.2	32.3
7th	511	10	15.3	11.5	17.0	21.9	34.2
8th	652	9	12.6	11.7	16.9	23.6	35.3
9th	409	9	16.9	12.2	16.9	22.7	31.3
10th	507	7	12.2	9.9	19.7	21.9	36.3
11th	362	10	12.7	9.9	13.8	22.7	40.9
12th	436	9	14.2	9.2	14.9	18.6	43.1
Total	5353	143	18.9	14.0	19.1	19.5	28.5

Table 3.27: The School Has Security (Police) Officer

Grade Level	N of Valid	N of Miss	Yes	No
4th	826	32	47.2	52.8
5th	871	39	54.0	46.0
6th	744	53	42.1	57.9
7th	497	24	52.1	47.9
8th	624	37	42.1	57.9
9th	395	23	67.1	32.9
10th	481	33	47.6	52.4
11th	353	19	67.1	32.9
12th	421	24	55.8	44.2
Total	5212	284	51.1	48.9

Table 3.28: A Security (Police) Officer Can Prevent Violence At School

Grade Level	N of Valid	N of Miss	Yes	No
4th	811	47	66.2	33.8
5th	866	44	70.2	29.8
6th	737	60	61.6	38.4
7th	487	34	66.9	33.1
8th	610	51	55.7	44.3
9th	390	28	69.2	30.8
10th	476	38	55.3	44.7
11th	351	21	64.1	35.9
12th	416	29	62.3	37.7
Total	5144	352	63.8	36.2

Table 3.29: Every School Needs A Security (Police) Officer

Grade Level	N of Valid	N of Miss	Yes	No
4th	838	20	82.7	17.3
5th	885	25	82.9	17.1
6th	764	33	73.0	27.0
7th	497	24	81.5	18.5
8th	640	21	69.1	30.9
9th	398	20	78.6	21.4
10th	499	15	69.5	30.5
11th	359	13	79.1	20.9
12th	427	18	73.8	26.2
Total	5307	189	77.1	22.9

Table 3.30: My Child Has Skipped School Without My Permission

Grade Level	N of Valid	N of Miss	Yes	No
4th	840	18	3.1	96.9
5th	890	20	3.4	96.6
6th	780	17	2.4	97.6
7th	503	18	3.4	96.6
8th	649	12	2.0	98.0
9th	409	9	5.9	94.1
10th	502	12	8.6	91.4
11th	363	9	10.2	89.8
12th	438	7	14.6	85.4
Total	5374	122	5.1	94.9

### 3.4 Community Information

Table 3.31: Drug And Alcohol Use Is A Big Problem Facing Youth In My Community

Grade Level	N of Valid	N of Miss	Never	Seldom	Sometimes	Often	A Lot
4th	832	26	10.5	11.1	23.0	22.2	33.3
5th	881	29	11.2	10.8	23.5	22.2	32.2
6th	783	14	7.0	9.7	27.3	28.7	27.2
7th	511	10	5.5	10.6	24.1	27.0	32.9
8th	643	18	3.4	10.4	28.9	28.9	28.3
9th	411	7	8.5	8.3	24.3	26.3	32.6
10th	507	7	5.9	9.5	28.8	27.2	28.6
11th	368	4	5.2	7.3	21.5	31.3	34.8
12th	439	6	4.6	6.4	25.1	30.1	33.9
Total	5375	121	7.3	9.7	25.2	26.5	31.3

Table 3.32: Youth Violence Is A Big Problem In My Community

Grade Level	N of Valid	N of Miss	Never	Seldom	Sometimes	Often	A Lot
4th	827	31	17.3	24.5	29.3	11.5	17.4
5th	873	37	15.3	25.2	30.0	13.4	16.0
6th	774	23	12.8	34.9	27.9	12.0	12.4
7th	504	17	10.7	29.6	30.6	14.9	14.3
8th	637	24	10.5	36.6	28.7	12.9	11.3
9th	404	14	14.6	30.2	27.2	12.6	15.3
10th	507	7	11.4	40.8	28.0	9.7	10.1
11th	365	7	9.9	34.0	31.5	10.7	14.0
12th	437	8	12.8	33.6	29.5	12.1	11.9
Total	5328	168	13.3	31.4	29.1	12.3	13.9

Table 3.33: My Child Has Friends Who Drink Alcohol

Grade Level	N of Valid	N of Miss	Never	Seldom	Sometimes	Often	A Lot
4th	822	36	92.2	4.6	1.5	0.9	0.9
5th	874	36	92.3	4.9	2.1	0.3	0.3
6th	769	28	86.6	7.7	3.9	0.5	1.3
7th	493	28	76.9	13.6	5.5	1.8	2.2
8th	641	20	67.6	19.7	9.7	1.9	1.2
9th	407	11	48.6	22.4	17.7	7.1	4.2
10th	501	13	31.9	23.8	27.7	9.8	6.8
11th	356	16	26.1	21.6	25.8	15.4	11.0
12th	431	14	18.3	17.6	34.1	15.8	14.2
Total	5294	202	67.5	13.1	11.3	4.5	3.6

Table 3.34: It Would Be Okay With Me For My Child To Use Alcohol If He/She Would Not Use Other Drugs

Grade Level	N of Valid	N of Miss	Never	Seldom	Sometimes	Often	A Lot
4th	837	21	96.9	1.6	1.0	0.2	0.4
5th	892	18	97.3	0.9	1.7	0.0	0.1
6th	781	16	96.5	2.0	0.6	0.3	0.5
7th	509	12	94.9	3.1	1.0	0.2	0.8
8th	653	8	93.6	4.3	0.8	0.9	0.5
9th	413	5	89.8	5.6	1.9	1.0	1.7
10th	507	7	86.4	6.9	4.3	1.0	1.4
11th	365	7	84.9	7.4	3.8	0.8	3.0
12th	441	4	81.0	10.2	6.6	1.1	1.1
Total	5398	98	92.7	3.9	2.1	0.5	0.8

Table 3.35: Beer Ads Encourage Underage Drinking

Grade Level	N of Valid	N of Miss	Never	Seldom	Sometimes	Often	A Lot
4th	832	26	20.4	10.5	25.4	16.8	26.9
5th	875	35	19.2	10.9	27.8	17.7	24.5
6th	773	24	15.3	11.6	31.8	19.3	22.0
7th	501	20	15.0	11.4	29.9	17.6	26.1
8th	638	23	11.9	10.2	30.1	21.8	26.0
9th	410	8	19.8	10.0	28.8	17.1	24.4
10th	501	13	15.6	10.0	31.9	18.0	24.6
11th	365	7	16.4	7.7	23.0	21.4	31.5
12th	438	7	14.8	7.8	31.1	21.0	25.3
Total	5333	163	16.7	10.3	28.9	18.8	25.4

Table 3.36: My Child Has Friends Who Use Tobacco

Grade Level	N of Valid	N of Miss	Never	Seldom	Sometimes	Often	A Lot
4th	834	24	93.2	3.7	1.7	1.0	0.5
5th	874	36	91.5	4.3	3.2	0.5	0.5
6th	777	20	87.6	6.7	3.3	1.2	1.2
7th	504	17	77.4	12.5	6.3	2.2	1.6
8th	644	17	70.0	15.5	9.5	2.5	2.5
9th	410	8	54.4	19.3	13.9	6.8	5.6
10th	506	8	40.3	21.1	20.8	10.3	7.5
11th	359	13	34.8	20.1	24.0	10.9	10.3
12th	439	6	28.9	21.0	25.3	12.3	12.5
Total	5347	149	70.7	11.9	9.7	4.1	3.6

Table 3.37: My Child Has Friends Who Use Drugs

Grade Level	N of Valid	N of Miss	Never	Seldom	Sometimes	Often	A Lot
4th	829	29	95.8	2.2	1.1	0.4	0.6
5th	869	41	95.7	2.4	1.3	0.3	0.2
6th	772	25	94.3	3.2	1.3	0.4	0.8
7th	502	19	87.8	6.4	3.4	0.8	1.6
8th	641	20	82.1	11.5	3.9	1.1	1.4
9th	410	8	65.1	17.6	9.5	4.4	3.4
10th	499	15	56.3	22.2	12.4	4.4	4.6
11th	351	21	52.1	21.7	15.4	4.6	6.3
12th	429	16	44.8	24.2	16.8	8.4	5.8
Total	5302	194	80.0	10.1	5.6	2.1	2.2

Table 3.38: It Would Be Okay With Me For My Child To Smoke A Little Pot If He/She Would Leave Other Drugs Alone

Grade Level	N of Valid	N of Miss	Never	Seldom	Sometimes	Often	A Lot
4th	841	17	97.9	1.2	0.4	0.4	0.2
5th	891	19	98.2	0.9	0.7	0.1	0.1
6th	782	15	98.3	0.9	0.3	0.1	0.4
7th	512	9	97.5	0.8	0.0	0.2	1.6
8th	655	6	97.7	1.1	0.8	0.5	0.0
9th	412	6	93.7	2.2	1.7	0.7	1.7
10th	508	6	93.3	3.5	2.2	0.4	0.6
11th	366	6	92.3	3.6	0.8	1.4	1.9
12th	442	3	91.4	4.8	2.3	1.1	0.5
Total	5409	87	96.3	1.8	0.9	0.4	0.6

Table 3.39: My Child Has Had 5 Or More Glasses Of Beer, Coolers Or Liquor Within A Few Hours

Grade Level	N of Valid	N of Miss	Never	Seldom	Sometimes	Often	A Lot
4th	839	19	98.0	1.2	0.4	0.2	0.2
5th	891	19	98.8	0.4	0.7	0.1	0.0
6th	786	11	98.7	0.4	0.4	0.1	0.4
7th	513	8	98.2	0.4	0.2	0.2	1.0
8th	651	10	98.0	1.2	0.6	0.0	0.2
9th	413	5	93.2	1.9	2.2	0.7	1.9
10th	507	7	91.9	3.7	2.6	0.6	1.2
11th	364	8	90.4	5.2	0.8	0.8	2.7
12th	439	6	88.8	5.2	3.2	1.4	1.4
Total	5403	93	96.1	1.8	1.0	0.4	0.8

Table 3.40: The Alcohol Industry Does A Good Job Of Discouraging Underage Drinking.

Grade Level	N of Valid	N of Miss	Never	Seldom	Sometimes	Often	A Lot
4th	830	28	35.4	24.2	25.7	6.7	8.0
5th	878	32	36.0	26.5	24.5	7.1	5.9
6th	781	16	32.3	28.9	26.2	5.8	6.8
7th	501	20	31.9	31.7	23.8	5.8	6.8
8th	643	18	33.9	31.1	26.0	4.8	4.2
9th	407	11	35.6	30.7	23.3	5.2	5.2
10th	505	9	35.4	32.3	25.9	3.6	2.8
11th	361	11	39.6	30.2	19.9	6.1	4.2
12th	439	6	39.4	31.2	20.0	6.6	2.7
Total	5345	151	35.2	29.1	24.4	5.9	5.5

### 3.5 Impressions About Drug Use

Table 3.41: Harmfulness Of Use – Cigarettes

Grade Level	N of Valid	N of Miss	No Harm	Some Harm	Harmful	Very Harmful
4th	844	14	1.1	1.8	7.1	90.0
5th	893	17	1.0	2.1	6.3	90.6
6th	783	14	0.6	1.0	7.8	90.5
7th	513	8	1.6	1.4	9.0	88.1
8th	653	8	0.8	1.8	8.1	89.3
9th	413	5	3.4	2.2	11.1	83.3
10th	511	3	1.2	2.5	10.4	85.9
11th	368	4	1.9	2.7	9.0	86.4
12th	439	6	1.4	3.0	7.3	88.4
Total	5417	79	1.3	2.0	8.1	88.6

Table 3.42: Harmfulness Of Use – Smokeless Tobacco (Chew, Etc.)

Grade Level	N of Valid	N of Miss	No Harm	Some Harm	Harmful	Very Harmful
4th	846	12	1.5	2.1	10.2	86.2
5th	891	19	1.6	2.1	7.7	88.6
6th	780	17	0.6	2.6	10.5	86.3
7th	508	13	1.4	1.8	12.6	84.3
8th	651	10	0.8	1.5	11.5	86.2
9th	407	11	2.7	3.4	14.3	79.6
10th	509	5	0.8	2.6	15.3	81.3
11th	359	13	2.5	3.6	11.7	82.2
12th	438	7	1.1	4.1	12.8	82.0
Total	5389	107	1.4	2.5	11.3	84.8

Table 3.43: Harmfulness Of Use – Cigars

Grade Level	N of Valid	N of Miss	No Harm	Some Harm	Harmful	Very Harmful
4th	843	15	0.9	2.6	8.8	87.7
5th	892	18	1.2	1.9	8.3	88.6
6th	781	16	0.5	1.0	11.4	87.1
7th	508	13	1.4	1.4	11.6	85.6
8th	647	14	0.8	2.8	10.7	85.8
9th	406	12	3.2	4.9	14.5	77.3
10th	506	8	1.0	4.3	15.0	79.6
11th	361	11	2.5	5.0	10.2	82.3
12th	435	10	1.4	4.8	14.0	79.8
Total	5379	117	1.3	2.8	11.1	84.8

Table 3.44: Harmfulness Of Use – Beer

Grade Level	N of Valid	N of Miss	No Harm	Some Harm	Harmful	Very Harmful
4th	835	23	1.2	4.2	12.0	82.6
5th	891	19	1.1	5.2	9.7	84.1
6th	777	20	0.6	5.1	15.8	78.4
7th	505	16	2.0	5.1	16.8	76.0
8th	644	17	0.8	8.1	19.1	72.0
9th	403	15	1.7	12.7	19.4	66.3
10th	508	6	1.8	10.4	22.2	65.6
11th	359	13	2.2	10.0	19.8	68.0
12th	434	11	1.8	11.1	25.1	62.0
Total	5356	140	1.3	7.2	16.6	74.9

Table 3.45: Harmfulness Of Use – Coolers, Breezers, Hard Lemonades, Etc.

Grade Level	N of Valid	N of Miss	No Harm	Some Harm	Harmful	Very Harmful
4th	834	24	2.0	5.2	12.6	80.2
5th	892	18	3.4	6.1	9.9	80.7
6th	773	24	1.8	7.1	17.2	73.9
7th	505	16	2.2	7.1	18.0	72.7
8th	648	13	1.2	10.0	19.6	69.1
9th	407	11	2.5	17.2	17.7	62.7
10th	505	9	3.2	10.9	24.2	61.8
11th	360	12	5.3	9.2	19.4	66.1
12th	434	11	3.5	13.6	23.0	59.9
Total	5358	138	2.6	8.8	16.9	71.7

Table 3.46: Harmfulness Of Use – Liquor

Grade Level	N of Valid	N of Miss	No Harm	Some Harm	Harmful	Very Harmful
4th	841	17	1.2	1.3	8.1	89.4
5th	892	18	1.5	2.6	6.5	89.5
6th	773	24	0.9	2.7	9.8	86.5
7th	504	17	2.0	2.8	8.9	86.3
8th	648	13	0.6	4.2	10.8	84.4
9th	405	13	2.7	6.2	15.1	76.0
10th	502	12	1.8	4.8	17.1	76.3
11th	363	9	1.7	5.0	14.9	78.5
12th	433	12	1.6	3.9	20.3	74.1
Total	5361	135	1.4	3.4	11.3	83.9

Table 3.47: Harmfulness Of Use – Marijuana

Grade Level	N of Valid	N of Miss	No Harm	Some Harm	Harmful	Very Harmful
4th	842	16	1.2	0.7	4.5	93.6
5th	895	15	1.0	1.0	4.8	93.2
6th	777	20	0.9	0.9	5.0	93.2
7th	506	15	1.4	0.6	6.9	91.1
8th	649	12	0.6	2.0	7.2	90.1
9th	405	13	3.2	4.2	9.9	82.7
10th	505	9	1.6	2.8	11.1	84.6
11th	356	16	3.1	3.4	10.4	83.1
12th	436	9	1.8	5.7	11.9	80.5
Total	5371	125	1.4	2.0	7.2	89.4

Table 3.48: Harmfulness Of Use – Cocaine (Crack, Etc)

Grade Level	N of Valid	N of Miss	No Harm	Some Harm	Harmful	Very Harmful
4th	840	18	1.1	0.2	1.5	97.1
5th	892	18	1.0	0.0	1.1	97.9
6th	776	21	0.5	0.5	1.3	97.7
7th	505	16	1.4	0.2	1.4	97.0
8th	648	13	0.5	0.2	1.5	97.8
9th	404	14	2.2	0.2	2.2	95.3
10th	507	7	1.2	0.4	3.4	95.1
11th	362	10	1.4	1.7	1.9	95.0
12th	436	9	1.4	1.6	1.6	95.4
Total	5370	126	1.1	0.4	1.7	96.8

Table 3.49: Harmfulness Of Use – Crystal Meth (Ice, Crank, Etc.)

Grade Level	N of Valid	N of Miss	No Harm	Some Harm	Harmful	Very Harmful
4th	838	20	1.0	0.2	1.0	97.9
5th	890	20	0.9	0.0	0.8	98.3
6th	775	22	0.4	0.8	1.4	97.4
7th	504	17	1.4	0.2	1.4	97.0
8th	647	14	0.5	0.2	1.5	97.8
9th	406	12	2.5	0.2	1.5	95.8
10th	507	7	1.2	0.8	3.0	95.1
11th	362	10	1.4	1.4	2.2	95.0
12th	433	12	1.4	1.2	1.4	96.1
Total	5362	134	1.0	0.5	1.5	97.0

### 3.6 During The Past Year Your Child Has Used

Table 3.50: Percent Of Use – Cigarettes

Grade Level	N of Valid	N of Miss	Did Not Use	1-6 Times a Year	1-2 Times a Month	1-7 Times a Week
4th	833	25	98.3	0.7	0.2	0.7
5th	880	30	98.4	1.6	0.0	0.0
6th	775	22	99.0	0.8	0.0	0.3
7th	507	14	98.8	0.4	0.2	0.6
8th	644	17	97.0	1.6	0.2	1.2
9th	406	12	94.8	2.5	0.7	2.0
10th	505	9	92.1	3.4	1.4	3.2
11th	364	8	88.7	4.9	1.1	5.2
12th	434	11	87.3	6.2	1.2	5.3
Total	5348	148	95.9	2.1	0.4	1.6

Table 3.51: Percent Of Use – Smokeless Tobacco (Chew, Etc.)

Grade Level	N of Valid	N of Miss	Did Not Use	1-6 Times a Year	1-2 Times a Month	1-7 Times a Week
4th	832	26	99.2	0.4	0.0	0.5
5th	882	28	99.3	0.7	0.0	0.0
6th	773	24	99.4	0.5	0.0	0.1
7th	503	18	99.2	0.6	0.0	0.2
8th	641	20	99.1	0.6	0.0	0.3
9th	406	12	99.0	0.2	0.2	0.5
10th	504	10	96.6	2.4	0.6	0.4
11th	359	13	95.3	2.2	1.1	1.4
12th	432	13	94.9	1.6	1.2	2.3
Total	5332	164	98.3	0.9	0.2	0.5

Table 3.52: Percent Of Use – Cigars

Grade Level	N of Valid	N of Miss	Did Not Use	1-6 Times a Year	1-2 Times a Month	1-7 Times a Week
4th	834	24	99.3	0.0	0.2	0.5
5th	883	27	99.8	0.1	0.1	0.0
6th	775	22	99.2	0.5	0.1	0.1
7th	505	16	99.6	0.4	0.0	0.0
8th	638	23	98.9	0.5	0.5	0.2
9th	407	11	98.5	0.5	0.5	0.5
10th	506	8	96.4	2.0	1.2	0.4
11th	361	11	95.0	3.0	1.1	0.8
12th	433	12	92.4	3.7	2.1	1.8
Total	5342	154	98.2	0.9	0.5	0.4

Table 3.53: Percent Of Use – Beer

Grade Level	N of Valid	N of Miss	Did Not Use	1-6 Times a Year	1-2 Times a Month	1-7 Times a Week
4th	832	26	98.4	0.7	0.1	0.7
5th	882	28	98.4	1.6	0.0	0.0
6th	768	29	99.3	0.4	0.1	0.1
7th	504	17	97.6	1.8	0.4	0.2
8th	640	21	97.2	1.9	0.5	0.5
9th	407	11	92.4	5.4	1.2	1.0
10th	501	13	86.8	9.0	3.2	1.0
11th	361	11	83.9	11.1	3.3	1.7
12th	432	13	73.8	17.6	4.9	3.7
Total	5327	169	93.8	4.3	1.1	0.8

Table 3.54: Percent Of Use – Coolers, Breezers, Hard Lemonades, Etc.

Grade Level	N of Valid	N of Miss	Did Not Use	1-6 Times a Year	1-2 Times a Month	1-7 Times a Week
4th	831	27	98.2	0.8	0.2	0.7
5th	883	27	98.4	1.4	0.2	0.0
6th	768	29	97.5	1.6	0.5	0.4
7th	504	17	97.4	1.8	0.8	0.0
8th	637	24	96.1	3.1	0.5	0.3
9th	405	13	91.6	5.7	1.7	1.0
10th	503	11	84.9	11.1	3.4	0.6
11th	364	8	84.1	11.3	2.7	1.9
12th	429	16	80.0	13.5	4.7	1.9
Total	5324	172	93.6	4.5	1.3	0.6

Table 3.55: Percent Of Use – Liquor

Grade Level	N of Valid	N of Miss	Did Not Use	1-6 Times a Year	1-2 Times a Month	1-7 Times a Week
4th	835	23	99.2	0.2	0.1	0.5
5th	880	30	99.3	0.5	0.2	0.0
6th	771	26	99.5	0.1	0.1	0.3
7th	505	16	99.0	0.4	0.6	0.0
8th	642	19	98.0	1.2	0.3	0.5
9th	406	12	92.9	4.4	1.2	1.5
10th	503	11	88.9	8.0	2.0	1.2
11th	361	11	85.0	10.0	3.3	1.7
12th	429	16	82.8	12.6	2.6	2.1
Total	5332	164	95.3	3.1	0.9	0.7

Table 3.56: Percent Of Use – Marijuana

Grade Level	N of Valid	N of Miss	Did Not Use	1-6 Times a Year	1-2 Times a Month	1-7 Times a Week
4th	835	23	99.2	0.1	0.2	0.5
5th	881	29	99.8	0.2	0.0	0.0
6th	769	28	99.2	0.4	0.0	0.4
7th	506	15	98.8	0.6	0.2	0.4
8th	640	21	98.9	0.2	0.5	0.5
9th	405	13	95.8	2.2	1.0	1.0
10th	505	9	93.9	3.0	1.6	1.6
11th	361	11	91.1	5.5	2.2	1.1
12th	434	11	90.1	5.5	1.8	2.5
Total	5336	160	97.2	1.5	0.6	0.7

Table 3.57: Percent Of Use – Cocaine (Crack, Etc)

Grade Level	N of Valid	N of Miss	Did Not Use	1-6 Times a Year	1-2 Times a Month	1-7 Times a Week
4th	833	25	99.4	0.0	0.0	0.6
5th	880	30	99.9	0.1	0.0	0.0
6th	770	27	99.6	0.0	0.1	0.3
7th	505	16	99.8	0.2	0.0	0.0
8th	640	21	99.5	0.0	0.2	0.3
9th	406	12	98.5	0.7	0.2	0.5
10th	506	8	99.0	0.8	0.0	0.2
11th	357	15	97.8	0.8	1.1	0.3
12th	433	12	98.4	0.7	0.5	0.5
Total	5330	166	99.3	0.3	0.2	0.3

Table 3.58: Percent Of Use – Crystal Meth (Ice, Crank, Etc.)

Grade Level	N of Valid	N of Miss	Did Not Use	1-6 Times a Year	1-2 Times a Month	1-7 Times a Week
4th	825	33	99.4	0.0	0.1	0.5
5th	882	28	99.9	0.1	0.0	0.0
6th	763	34	99.5	0.1	0.1	0.3
7th	502	19	100.0	0.0	0.0	0.0
8th	638	23	99.7	0.0	0.2	0.2
9th	404	14	98.5	0.7	0.5	0.2
10th	503	11	99.4	0.0	0.6	0.0
11th	358	14	98.3	0.8	0.3	0.6
12th	432	13	97.9	0.7	0.7	0.7
Total	5307	189	99.3	0.2	0.2	0.2

### 3.7 How Easy Is It For Students In Your Child's Grade To Get

Table 3.59: How Easy Is It For Students In Your Child's Grade To Get Cigarettes

Grade Level	N of Valid	N of Miss	Cannot Get	Very Difficult	Fairly Difficult	Fairly Easy	Very Easy
4th	819	39	43.3	21.6	12.2	15.4	7.4
5th	861	49	41.8	18.0	14.2	17.3	8.7
6th	751	46	28.5	19.6	20.9	20.5	10.5
7th	490	31	26.3	14.3	16.7	28.6	14.1
8th	619	42	19.7	10.7	17.8	36.0	15.8
9th	394	24	17.3	6.9	17.0	34.3	24.6
10th	493	21	14.0	4.1	8.3	39.4	34.3
11th	359	13	15.9	3.1	10.3	30.9	39.8
12th	429	16	7.5	3.3	6.3	26.3	56.6
Total	5215	281	27.0	13.2	14.2	25.8	19.8

Table 3.60: How Easy Is It For Students In Your Child's Grade To Get Smokeless Tobacco (Chew, Etc.)

Grade Level	N of Valid	N of Miss	Cannot Get	Very Difficult	Fairly Difficult	Fairly Easy	Very Easy
4th	817	41	46.9	21.1	12.1	14.0	6.0
5th	863	47	44.6	17.7	14.3	16.1	7.3
6th	748	49	31.7	20.1	19.8	18.4	10.0
7th	490	31	30.0	15.7	16.7	25.9	11.6
8th	617	44	21.4	10.5	19.3	32.4	16.4
9th	392	26	20.4	6.9	18.9	32.7	21.2
10th	491	23	15.7	5.1	8.8	39.1	31.4
11th	353	19	16.7	4.5	10.5	31.4	36.8
12th	425	20	8.2	3.1	8.0	27.8	52.9
Total	5196	300	29.5	13.4	14.6	24.4	18.0

Table 3.61: How Easy Is It For Students In Your Child's Grade To Get Cigars

Grade Level	N of Valid	N of Miss	Cannot Get	Very Difficult	Fairly Difficult	Fairly Easy	Very Easy
4th	815	43	49.1	22.7	11.3	11.0	5.9
5th	860	50	45.9	19.4	15.3	13.0	6.3
6th	745	52	32.9	24.6	20.0	15.0	7.5
7th	488	33	31.6	17.0	21.9	21.5	8.0
8th	613	48	22.8	14.4	23.8	27.2	11.7
9th	389	29	22.6	8.7	20.6	31.6	16.5
10th	487	27	15.8	6.6	13.6	37.8	26.3
11th	347	25	17.0	4.0	14.4	32.0	32.6
12th	425	20	8.2	4.2	10.8	29.4	47.3
Total	5169	327	30.8	15.6	16.8	21.8	15.0

Table 3.62: How Easy Is It For Students In Your Child's Grade To Get Beer

Grade Level	N of Valid	N of Miss	Cannot Get	Very Difficult	Fairly Difficult	Fairly Easy	Very Easy
4th	819	39	47.6	21.1	11.5	13.1	6.7
5th	863	47	46.0	19.2	13.3	15.3	6.1
6th	748	49	33.6	24.1	18.6	16.6	7.2
7th	492	29	29.7	18.7	21.5	20.5	9.6
8th	614	47	22.8	13.7	22.3	28.3	12.9
9th	394	24	20.1	10.4	21.3	28.9	19.3
10th	487	27	13.6	7.4	16.6	35.1	27.3
11th	355	17	16.3	4.2	13.8	35.2	30.4
12th	424	21	8.3	5.2	11.3	32.5	42.7
Total	5196	300	30.1	15.6	16.4	22.8	15.1

Table 3.63: How Easy Is It For Students In Your Child's Grade To Get Coolers, Breezers, Hard Lemonades, Etc.

Grade Level	N of Valid	N of Miss	Cannot Get	Very Difficult	Fairly Difficult	Fairly Easy	Very Easy
4th	819	39	48.4	22.0	12.0	11.6	6.1
5th	859	51	46.7	19.8	14.7	12.7	6.2
6th	751	46	34.5	23.4	20.6	14.6	6.8
7th	493	28	31.2	20.1	21.3	19.5	7.9
8th	611	50	23.4	15.2	21.9	27.8	11.6
9th	393	25	20.1	10.2	23.2	27.7	18.8
10th	493	21	14.0	7.5	16.2	37.7	24.5
11th	355	17	16.6	4.8	14.4	33.5	30.7
12th	425	20	8.5	4.9	11.8	32.9	41.9
Total	5199	297	30.7	16.0	17.1	21.8	14.3

Table 3.64: How Easy Is It For Students In Your Child's Grade To Get Liquor

Grade Level	N of Valid	N of Miss	Cannot Get	Very Difficult	Fairly Difficult	Fairly Easy	Very Easy
4th	816	42	50.4	22.7	11.0	10.0	5.9
5th	856	54	48.7	20.6	14.5	10.9	5.4
6th	742	55	37.6	25.3	18.6	13.1	5.4
7th	492	29	33.7	21.1	18.7	17.9	8.5
8th	614	47	24.3	16.9	24.6	25.4	8.8
9th	394	24	23.1	15.0	21.6	23.9	16.5
10th	493	21	16.8	9.3	19.3	33.7	20.9
11th	356	16	17.1	5.1	18.0	32.0	27.8
12th	423	22	8.3	7.1	15.4	33.8	35.5
Total	5186	310	32.6	17.5	17.4	19.9	12.5

Table 3.65: How Easy Is It For Students In Your Child's Grade To Get Marijuana

Grade Level	N of Valid	N of Miss	Cannot Get	Very Difficult	Fairly Difficult	Fairly Easy	Very Easy
4th	816	42	53.4	21.7	9.3	9.9	5.6
5th	852	58	49.2	22.4	13.5	9.2	5.8
6th	744	53	38.2	28.6	17.3	11.2	4.7
7th	489	32	34.2	22.1	17.6	18.0	8.2
8th	608	53	26.8	19.6	23.2	20.7	9.7
9th	387	31	24.8	13.4	20.7	24.8	16.3
10th	489	25	17.8	9.0	20.2	32.1	20.9
11th	354	18	17.5	8.8	14.7	31.1	28.0
12th	424	21	10.6	5.2	15.1	35.4	33.7
Total	5163	333	34.1	18.5	16.3	18.8	12.3

Table 3.66: How Easy Is It For Students In Your Child's Grade To Get Cocaine (Crack, Etc)

Grade Level	N of Valid	N of Miss	Cannot Get	Very Difficult	Fairly Difficult	Fairly Easy	Very Easy
4th	818	40	56.4	21.6	10.3	6.6	5.1
5th	856	54	53.0	24.3	11.4	7.1	4.1
6th	744	53	44.0	30.9	13.7	7.8	3.6
7th	487	34	38.0	26.7	16.8	11.3	7.2
8th	610	51	33.6	24.3	23.9	13.0	5.2
9th	388	30	29.1	24.2	22.4	16.0	8.2
10th	485	29	22.5	18.8	27.2	20.4	11.1
11th	346	26	22.3	15.9	23.7	21.1	17.1
12th	420	25	14.5	12.9	22.1	31.2	19.3
Total	5154	342	38.6	23.0	17.6	13.0	7.7

Table 3.67: How Easy Is It For Students In Your Child's Grade To Get Uppers (Stimulants)

Grade Level	N of Valid	N of Miss	Cannot Get	Very Difficult	Fairly Difficult	Fairly Easy	Very Easy
4th	815	43	56.3	22.1	10.7	6.5	4.4
5th	852	58	51.9	23.5	12.6	8.0	4.1
6th	741	56	44.0	27.7	17.3	8.0	3.1
7th	484	37	37.2	24.6	20.5	11.4	6.4
8th	608	53	31.1	23.5	23.8	15.3	6.3
9th	387	31	28.9	22.0	23.3	16.8	9.0
10th	482	32	21.6	16.6	23.9	25.7	12.2
11th	346	26	25.4	12.4	22.3	22.8	17.1
12th	420	25	14.5	11.2	21.2	31.7	21.4
Total	5135	361	38.2	21.5	18.2	14.2	7.9

Table 3.68: How Easy Is It For Students In Your Child's Grade To Get Downers (Depressants)

Grade Level	N of Valid	N of Miss	Cannot Get	Very Difficult	Fairly Difficult	Fairly Easy	Very Easy
4th	810	48	56.4	21.5	10.4	7.4	4.3
5th	857	53	51.8	23.8	12.5	7.6	4.3
6th	739	58	42.8	28.3	16.5	8.7	3.8
7th	482	39	37.1	24.5	20.3	11.8	6.2
8th	608	53	31.1	21.9	25.5	15.1	6.4
9th	384	34	28.9	22.1	21.1	18.2	9.6
10th	477	37	21.4	17.4	24.3	23.9	13.0
11th	343	29	23.9	12.2	22.4	24.2	17.2
12th	417	28	14.1	10.8	20.9	32.6	21.6
Total	5117	379	37.9	21.4	18.1	14.5	8.1

Table 3.69: How Easy Is It For Students In Your Child's Grade To Get Inhalants (Glue, Etc)

Grade Level	N of Valid	N of Miss	Cannot Get	Very Difficult	Fairly Difficult	Fairly Easy	Very Easy
4th	813	45	50.4	16.7	10.3	13.8	8.7
5th	860	50	45.6	19.5	10.9	13.5	10.5
6th	742	55	35.7	17.0	13.3	19.5	14.4
7th	480	41	30.4	15.8	13.5	20.6	19.6
8th	605	56	26.6	12.1	15.9	22.6	22.8
9th	388	30	26.0	12.1	17.3	19.3	25.3
10th	483	31	18.8	10.1	11.8	27.7	31.5
11th	347	25	23.1	8.1	12.7	24.5	31.7
12th	419	26	12.9	6.2	13.1	30.1	37.7
Total	5137	359	33.1	14.2	12.9	20.0	19.8

Table 3.70: How Easy Is It For Students In Your Child's Grade To Get Hallucinogens (PCP, LSD, Etc)

Grade Level	N of Valid	N of Miss	Cannot Get	Very Difficult	Fairly Difficult	Fairly Easy	Very Easy
4th	812	46	58.4	23.5	8.6	5.9	3.6
5th	858	52	54.3	25.5	10.1	6.4	3.6
6th	737	60	46.8	32.3	12.6	5.3	3.0
7th	484	37	41.5	27.7	15.9	9.5	5.4
8th	605	56	36.0	27.6	22.1	10.2	4.0
9th	383	35	33.2	25.1	21.4	14.6	5.7
10th	473	41	24.7	23.5	25.4	15.6	10.8
11th	345	27	27.0	16.8	23.2	17.7	15.4
12th	414	31	17.6	19.8	21.5	25.1	15.9
Total	5111	385	41.4	25.4	16.3	10.7	6.3

Table 3.71: How Easy Is It For Students In Your Child's Grade To Get Heroin (Opiates)

Grade Level	N of Valid	N of Miss	Cannot Get	Very Difficult	Fairly Difficult	Fairly Easy	Very Easy
4th	810	48	59.1	23.5	8.6	5.3	3.5
5th	860	50	55.5	25.7	9.5	5.9	3.4
6th	738	59	48.8	33.1	10.3	5.1	2.7
7th	481	40	42.8	29.1	13.9	9.6	4.6
8th	606	55	39.6	28.9	18.2	9.7	3.6
9th	384	34	34.9	28.6	19.8	10.7	6.0
10th	472	42	29.0	24.4	23.7	14.2	8.7
11th	344	28	27.6	20.1	23.0	16.0	13.4
12th	415	30	20.7	20.5	21.4	21.2	16.1
Total	5110	386	43.3	26.4	14.9	9.5	5.8

Table 3.72: How Easy Is It For Students In Your Child's Grade To Get Anabolic Steroids

Grade Level	N of Valid	N of Miss	Cannot Get	Very Difficult	Fairly Difficult	Fairly Easy	Very Easy
4th	813	45	59.3	22.5	9.2	5.8	3.2
5th	860	50	55.1	24.4	10.0	6.4	4.1
6th	738	59	46.5	28.7	15.3	6.5	3.0
7th	482	39	40.5	25.7	18.3	9.8	5.8
8th	605	56	35.7	24.8	24.6	9.8	5.1
9th	384	34	30.7	27.9	21.6	13.5	6.3
10th	471	43	24.4	17.0	26.8	21.0	10.8
11th	340	32	25.6	16.5	25.3	18.2	14.4
12th	413	32	19.1	15.5	22.0	25.2	18.2
Total	5106	390	41.3	23.2	17.6	11.2	6.7

Table 3.73: How Easy Is It For Students In Your Child's Grade To Get Ecstasy (MDMA)

Grade Level	N of Valid	N of Miss	Cannot Get	Very Difficult	Fairly Difficult	Fairly Easy	Very Easy
4th	813	45	58.5	22.9	9.1	5.7	3.8
5th	857	53	54.0	25.8	10.0	6.7	3.5
6th	741	56	47.4	31.3	12.3	5.9	3.1
7th	482	39	41.9	26.8	15.6	10.8	5.0
8th	599	62	35.9	25.0	23.0	10.7	5.3
9th	384	34	31.5	26.6	21.4	13.3	7.3
10th	477	37	24.3	19.9	25.4	19.5	10.9
11th	343	29	26.5	15.5	23.6	18.4	16.0
12th	413	32	16.5	17.4	23.0	25.9	17.2
Total	5109	387	41.2	24.3	16.5	11.3	6.8

Table 3.74: How Easy Is It For Students In Your Child's Grade To Get OxyContin

Grade Level	N of Valid	N of Miss	Cannot Get	Very Difficult	Fairly Difficult	Fairly Easy	Very Easy
4th	814	44	59.3	22.7	8.5	6.0	3.4
5th	858	52	54.9	24.6	10.8	6.1	3.6
6th	737	60	46.7	30.8	12.9	6.4	3.3
7th	484	37	40.9	29.1	16.7	8.9	4.3
8th	595	66	38.0	24.4	21.3	11.8	4.5
9th	381	37	32.8	26.0	21.5	12.3	7.3
10th	471	43	25.3	20.6	25.9	17.6	10.6
11th	341	31	27.3	17.6	22.3	18.8	14.1
12th	412	33	20.6	18.9	22.3	24.0	14.1
Total	5093	403	42.1	24.4	16.4	10.9	6.2

Table 3.75: How Easy Is It For Students In Your Child's Grade To Get Crystal Meth (Ice, Crank, Etc.)

Grade Level	N of Valid	N of Miss	Cannot Get	Very Difficult	Fairly Difficult	Fairly Easy	Very Easy
4th	815	43	58.5	22.3	8.7	6.4	4.0
5th	859	51	54.0	24.8	10.8	6.4	4.0
6th	736	61	47.3	30.6	12.1	6.1	3.9
7th	486	35	40.7	27.4	14.2	11.9	5.8
8th	606	55	37.6	25.4	20.0	12.0	5.0
9th	384	34	32.3	23.4	22.9	13.0	8.3
10th	473	41	25.2	19.9	26.0	18.0	11.0
11th	342	30	28.1	14.6	23.4	19.0	14.9
12th	416	29	18.5	18.3	22.1	23.8	17.3
Total	5117	379	41.6	23.8	16.1	11.4	7.1

Table 3.76: How Easy Is It For Students In Your Child's Grade To Get A Gun

Grade Level	N of Valid	N of Miss	Cannot Get	Very Difficult	Fairly Difficult	Fairly Easy	Very Easy
4th	808	50	48.6	19.6	12.7	12.0	7.1
5th	857	53	45.3	20.4	13.3	13.2	7.8
6th	736	61	37.5	21.7	16.7	15.2	8.8
7th	483	38	35.0	21.1	15.5	15.3	13.0
8th	607	54	31.3	18.5	18.6	20.4	11.2
9th	387	31	28.7	19.4	19.9	16.0	16.0
10th	476	38	23.9	16.4	20.4	21.4	17.9
11th	336	36	25.9	13.1	20.8	19.6	20.5
12th	417	28	16.1	14.1	20.6	23.5	25.7
Total	5107	389	35.1	18.9	16.8	16.6	12.6

### 3.8 Safety at School

Table 3.77: While At School My Child Feels Safe In The Classroom

Grade Level	N of Valid	N of Miss	Never	Seldom	Sometimes	Often	A Lot
4th	830	28	1.0	2.2	9.0	22.9	64.9
5th	881	29	1.0	1.5	9.5	21.5	66.5
6th	768	29	2.0	1.0	7.3	21.4	68.4
7th	506	15	2.8	2.8	9.1	29.2	56.1
8th	636	25	2.2	0.6	5.7	26.3	65.3
9th	400	18	5.5	2.5	8.8	27.3	56.0
10th	505	9	3.6	2.6	10.5	24.6	58.8
11th	360	12	6.7	1.7	6.7	27.8	57.2
12th	435	10	5.3	3.2	6.4	24.4	60.7
<b>Total</b>	<b>5321</b>	<b>175</b>	<b>2.8</b>	<b>1.9</b>	<b>8.2</b>	<b>24.4</b>	<b>62.8</b>

Table 3.78: While At School My Child Feels Safe In The Cafeteria

Grade Level	N of Valid	N of Miss	Never	Seldom	Sometimes	Often	A Lot
4th	827	31	1.7	1.6	10.2	27.4	59.1
5th	881	29	1.4	1.1	10.0	25.7	61.9
6th	770	27	2.9	2.1	9.1	28.1	57.9
7th	503	18	4.0	3.2	13.1	31.8	47.9
8th	636	25	2.0	1.7	9.9	30.3	56.0
9th	400	18	5.8	4.5	12.8	26.8	50.3
10th	502	12	4.2	3.4	11.4	29.1	52.0
11th	356	16	5.9	3.7	9.6	30.6	50.3
12th	432	13	5.6	3.5	9.0	26.6	55.3
<b>Total</b>	<b>5307</b>	<b>189</b>	<b>3.2</b>	<b>2.4</b>	<b>10.4</b>	<b>28.2</b>	<b>55.7</b>

Table 3.79: While At School My Child Feels Safe In The Halls

Grade Level	N of Valid	N of Miss	Never	Seldom	Sometimes	Often	A Lot
4th	826	32	1.9	2.2	14.0	26.6	55.2
5th	878	32	1.9	2.6	11.3	26.0	58.2
6th	768	29	3.6	2.3	11.8	31.0	51.2
7th	504	17	5.4	5.2	15.5	34.7	39.3
8th	635	26	3.0	1.9	12.1	32.4	50.6
9th	398	20	6.8	5.0	16.3	25.9	46.0
10th	502	12	4.6	4.2	13.1	29.3	48.8
11th	360	12	6.4	3.3	11.1	30.0	49.2
12th	433	12	6.5	3.5	11.5	27.7	50.8
Total	5304	192	3.9	3.1	12.9	29.1	51.0

Table 3.80: While At School My Child Feels Safe In the Bathroom

Grade Level	N of Valid	N of Miss	Never	Seldom	Sometimes	Often	A Lot
4th	828	30	2.8	3.5	16.5	26.2	51.0
5th	878	32	3.2	2.7	14.5	24.7	54.9
6th	765	32	4.6	2.4	14.0	32.4	46.7
7th	503	18	7.4	6.6	14.3	33.6	38.2
8th	635	26	3.6	4.3	14.6	29.8	47.7
9th	399	19	8.5	6.8	17.0	28.1	39.6
10th	501	13	6.4	5.0	16.4	27.7	44.5
11th	355	17	7.9	6.8	11.0	29.6	44.8
12th	430	15	7.2	4.7	14.0	27.7	46.5
Total	5294	202	5.1	4.3	14.8	28.6	47.1

Table 3.81: While At School My Child Feels Safe In The Gym

Grade Level	N of Valid	N of Miss	Never	Seldom	Sometimes	Often	A Lot
4th	809	49	2.3	1.9	11.9	28.1	55.9
5th	865	45	2.3	1.8	11.3	25.2	59.3
6th	764	33	3.5	2.0	9.6	29.3	55.6
7th	502	19	4.6	4.0	11.6	33.9	46.0
8th	634	27	2.8	1.3	9.8	29.7	56.5
9th	397	21	7.1	5.0	10.1	29.0	48.9
10th	495	19	5.1	3.2	12.3	29.9	49.5
11th	355	17	6.2	3.7	10.7	29.3	50.1
12th	427	18	6.6	2.6	9.1	26.7	55.0
Total	5248	248	4.0	2.6	10.8	28.7	53.9

Table 3.82: While At School My Child Feels Safe On The School Bus

Grade Level	N of Valid	N of Miss	Never	Seldom	Sometimes	Often	A Lot
4th	778	80	6.6	4.2	21.3	22.9	45.0
5th	834	76	7.1	3.6	17.3	26.7	45.3
6th	723	74	6.9	5.0	19.4	28.6	40.1
7th	468	53	9.4	5.8	18.6	27.6	38.7
8th	594	67	5.9	4.0	18.9	30.3	40.9
9th	372	46	11.6	7.8	16.1	20.7	43.8
10th	463	51	7.1	5.6	17.5	27.4	42.3
11th	333	39	7.2	6.3	12.3	28.2	45.9
12th	389	56	9.8	3.6	12.1	26.7	47.8
Total	4954	542	7.6	4.8	17.7	26.6	43.2

Table 3.83: While At School My Child Feels Safe At School Events

Grade Level	N of Valid	N of Miss	Never	Seldom	Sometimes	Often	A Lot
4th	809	49	3.0	2.7	15.3	27.6	51.4
5th	868	42	3.2	2.4	14.5	25.7	54.1
6th	760	37	4.1	2.4	11.6	32.4	49.6
7th	501	20	6.2	4.2	13.8	33.1	42.7
8th	629	32	2.2	2.5	11.3	33.4	50.6
9th	396	22	7.6	7.3	13.1	23.7	48.2
10th	501	13	4.8	4.0	14.8	32.7	43.7
11th	353	19	6.5	4.2	10.2	31.4	47.6
12th	430	15	7.0	3.5	10.2	27.4	51.9
Total	5247	249	4.5	3.4	13.0	29.6	49.5

Table 3.84: While At School My Child Feels Safe On The Playground

Grade Level	N of Valid	N of Miss	Never	Seldom	Sometimes	Often	A Lot
4th	827	31	2.2	4.2	19.0	25.8	48.9
5th	876	34	3.5	3.0	16.6	26.5	50.5
6th	754	43	4.4	2.5	13.0	30.1	50.0
7th	495	26	5.7	3.8	16.6	31.9	42.0
8th	621	40	3.4	2.4	11.4	31.6	51.2
9th	386	32	9.6	5.4	13.7	24.9	46.4
10th	468	46	5.1	2.8	15.2	29.9	47.0
11th	344	28	6.7	3.5	9.9	31.7	48.3
12th	394	51	8.1	2.5	8.9	28.2	52.3
Total	5165	331	4.8	3.3	14.4	28.7	48.8

Table 3.85: While At School My Child Feels Safe In The Parking Lot

Grade Level	N of Valid	N of Miss	Never	Seldom	Sometimes	Often	A Lot
4th	818	40	5.1	3.8	16.6	27.1	47.3
5th	870	40	5.4	3.2	16.3	26.7	48.4
6th	756	41	5.7	3.3	13.1	31.6	46.3
7th	496	25	7.7	5.2	16.5	32.7	37.9
8th	632	29	3.6	3.8	14.1	31.8	46.7
9th	395	23	8.9	6.6	17.5	24.3	42.8
10th	497	17	6.4	3.2	17.3	28.0	45.1
11th	350	22	7.1	4.9	12.3	32.0	43.7
12th	432	13	7.9	3.0	12.5	27.3	49.3
Total	5246	250	6.1	3.9	15.2	29.0	45.7

### 3.9 Effectiveness of Solutions

Table 3.86: School-based Education About The Harmful Effects Of Drug And Alcohol Use

Grade Level	N of Valid	N of Miss	Strongly Agree	Agree	Undecided	Disagree	Strongly Disagree
4th	818	40	60.8	28.2	6.4	1.7	2.9
5th	865	45	63.2	27.4	5.2	1.6	2.5
6th	756	41	61.6	29.2	6.0	1.3	1.9
7th	498	23	55.2	32.9	6.6	2.2	3.0
8th	626	35	56.4	32.3	5.6	2.2	3.5
9th	396	22	50.3	34.1	10.6	2.5	2.5
10th	500	14	47.6	30.8	13.6	4.8	3.2
11th	359	13	48.2	32.6	12.3	3.6	3.3
12th	433	12	48.7	34.6	9.2	4.2	3.2
Total	5251	245	56.4	30.7	7.7	2.4	2.8

Table 3.87: TV Ads On Preventing Drug Use By Youth

Grade Level	N of Valid	N of Miss	Strongly Agree	Agree	Undecided	Disagree	Strongly Disagree
4th	659	199	50.7	36.0	7.0	3.2	3.2
5th	686	224	53.9	31.9	7.6	3.2	3.4
6th	553	244	49.5	33.3	11.6	3.3	2.4
7th	299	222	40.1	37.8	10.7	7.7	3.7
8th	463	198	43.4	36.7	11.7	4.8	3.5
9th	271	147	41.3	33.9	15.9	4.8	4.1
10th	424	90	35.8	38.7	15.1	7.8	2.6
11th	232	140	34.5	31.9	21.1	9.1	3.4
12th	356	89	39.3	36.5	14.6	6.7	2.8
Total	3943	1553	45.2	35.1	11.6	5.0	3.1

Table 3.88: TV Ads On Preventing Alcohol Use By Youth

Grade Level	N of Valid	N of Miss	Strongly Agree	Agree	Undecided	Disagree	Strongly Disagree
4th	812	46	49.9	35.0	8.4	3.4	3.3
5th	859	51	53.4	30.7	8.7	3.5	3.6
6th	754	43	49.2	32.1	12.9	3.8	2.0
7th	490	31	41.4	36.1	12.2	6.3	3.9
8th	626	35	42.2	35.5	12.8	6.1	3.5
9th	397	21	40.6	33.2	16.1	6.3	3.8
10th	499	15	36.3	36.5	14.8	9.8	2.6
11th	355	17	37.7	29.9	21.1	9.0	2.3
12th	429	16	38.9	34.5	15.4	7.5	3.7
Total	5221	275	44.9	33.7	12.6	5.6	3.2

Table 3.89: Religious Institutions Providing Drug Education To Young People

Grade Level	N of Valid	N of Miss	Strongly Agree	Agree	Undecided	Disagree	Strongly Disagree
4th	812	46	55.9	30.2	8.5	2.3	3.1
5th	868	42	53.1	30.1	10.4	3.3	3.1
6th	755	42	49.9	30.9	13.4	4.1	1.7
7th	491	30	42.8	34.6	15.1	3.5	4.1
8th	622	39	40.5	36.3	16.2	3.4	3.5
9th	396	22	39.1	33.8	16.4	5.3	5.3
10th	495	19	37.0	35.4	20.2	5.1	2.4
11th	353	19	37.7	33.7	19.3	6.2	3.1
12th	432	13	39.8	35.6	16.7	4.6	3.2
Total	5224	272	45.9	32.9	14.2	3.9	3.2

Table 3.90: Parents Providing Drug Education To Their Children

Grade Level	N of Valid	N of Miss	Strongly Agree	Agree	Undecided	Disagree	Strongly Disagree
4th	816	42	70.8	21.6	3.3	2.1	2.2
5th	869	41	70.2	21.2	4.5	0.8	3.3
6th	761	36	72.8	20.1	3.3	1.4	2.4
7th	489	32	69.1	22.9	3.1	1.8	3.1
8th	626	35	69.3	22.4	4.0	0.6	3.7
9th	398	20	61.1	27.1	5.3	2.5	4.0
10th	494	20	58.7	31.6	6.5	1.8	1.4
11th	355	17	60.6	24.5	8.2	3.4	3.4
12th	434	11	61.1	25.6	7.6	2.8	3.0
Total	5242	254	67.3	23.4	4.7	1.7	2.9

Table 3.91: Parents Taking Responsibility For Their Children's Use Of Drugs And Alcohol

Grade Level	N of Valid	N of Miss	Strongly Agree	Agree	Undecided	Disagree	Strongly Disagree
4th	818	40	65.2	20.3	6.2	4.4	3.9
5th	866	44	66.4	19.4	6.8	2.9	4.5
6th	756	41	70.0	18.1	6.5	2.5	2.9
7th	491	30	65.0	21.8	6.5	3.5	3.3
8th	624	37	68.6	15.9	7.4	2.9	5.3
9th	396	22	59.8	22.7	8.3	3.3	5.8
10th	496	18	64.7	19.2	8.3	4.0	3.8
11th	355	17	56.3	24.2	11.0	5.9	2.5
12th	432	13	59.5	20.6	9.5	6.5	3.9
Total	5234	262	64.9	19.8	7.5	3.8	4.0

Table 3.92: News Media Keeping Parents/Public Informed About Student Drug Use And Violence

Grade Level	N of Valid	N of Miss	Strongly Agree	Agree	Undecided	Disagree	Strongly Disagree
4th	816	42	55.0	30.3	9.2	2.3	3.2
5th	869	41	55.9	28.4	11.0	2.3	2.3
6th	756	41	52.9	31.5	10.2	3.3	2.1
7th	488	33	49.2	34.4	9.2	4.7	2.5
8th	628	33	48.9	31.7	11.0	4.6	3.8
9th	397	21	45.1	33.8	11.3	5.0	4.8
10th	496	18	42.9	35.9	14.3	4.0	2.8
11th	356	16	42.1	31.7	17.4	4.8	3.9
12th	433	12	40.6	36.3	14.3	6.2	2.5
Total	5239	257	49.6	32.1	11.5	3.8	3.0

Table 3.93: Schools Keeping Parents/Public Informed About Student Drug Use And Violence

Grade Level	N of Valid	N of Miss	Strongly Agree	Agree	Undecided	Disagree	Strongly Disagree
4th	815	43	64.3	24.5	6.6	2.1	2.5
5th	862	48	62.6	25.5	7.3	1.6	2.9
6th	760	37	62.4	26.4	5.5	3.2	2.5
7th	488	33	59.4	27.5	5.1	5.3	2.7
8th	629	32	59.6	26.4	6.0	3.0	4.9
9th	395	23	53.7	30.6	7.1	4.8	3.8
10th	497	17	55.1	27.6	8.7	6.2	2.4
11th	356	16	48.3	32.6	10.7	3.9	4.5
12th	432	13	51.6	30.6	7.6	6.5	3.7
Total	5234	262	58.9	27.3	7.0	3.7	3.2

Table 3.94: Community Anti-drug Coalition For Keeping Students Drug Free

Grade Level	N of Valid	N of Miss	Strongly Agree	Agree	Undecided	Disagree	Strongly Disagree
4th	809	49	59.5	26.9	8.8	2.1	2.7
5th	861	49	57.1	29.3	9.4	2.2	2.0
6th	749	48	53.7	29.8	12.3	2.0	2.3
7th	486	35	50.8	32.7	12.3	1.6	2.5
8th	611	50	50.2	29.0	13.9	3.3	3.6
9th	391	27	48.6	31.2	11.8	4.1	4.3
10th	497	17	42.1	31.6	18.1	6.0	2.2
11th	353	19	45.6	28.9	18.1	4.2	3.1
12th	429	16	41.7	35.4	16.8	4.0	2.1
Total	5186	310	51.4	30.1	12.7	3.0	2.7

Table 3.95: After School Activities For Students At School

Grade Level	N of Valid	N of Miss	Strongly Agree	Agree	Undecided	Disagree	Strongly Disagree
4th	811	47	55.6	30.3	9.0	2.3	2.7
5th	856	54	57.4	29.6	8.4	1.6	3.0
6th	755	42	56.6	29.9	10.5	1.6	1.5
7th	484	37	54.3	30.4	9.7	2.9	2.7
8th	620	41	54.4	31.9	8.7	2.3	2.7
9th	391	27	53.7	31.2	8.2	2.6	4.3
10th	497	17	48.7	34.0	11.5	4.2	1.6
11th	355	17	52.4	28.2	13.2	2.5	3.7
12th	429	16	51.0	31.9	11.7	3.0	2.3
Total	5198	298	54.4	30.7	9.8	2.4	2.6

Table 3.96: After School Activities For Students In The Community (Not At School)

Grade Level	N of Valid	N of Miss	Strongly Agree	Agree	Undecided	Disagree	Strongly Disagree
4th	816	42	48.2	33.5	11.5	3.1	3.8
5th	860	50	50.7	31.5	11.4	2.8	3.6
6th	751	46	47.8	31.7	13.6	3.5	3.5
7th	486	35	47.7	29.2	15.2	4.5	3.3
8th	621	40	44.9	35.9	12.7	2.6	3.9
9th	394	24	43.4	33.5	12.9	5.1	5.1
10th	496	18	40.7	32.5	19.4	4.8	2.6
11th	359	13	45.4	30.6	15.3	4.5	4.2
12th	429	16	44.1	34.5	14.9	4.4	2.1
Total	5212	284	46.5	32.6	13.7	3.7	3.5

Table 3.97: Treatment For Students Who Are Drug And/Or Alcohol Dependent

Grade Level	N of Valid	N of Miss	Strongly Agree	Agree	Undecided	Disagree	Strongly Disagree
4th	813	45	58.5	26.7	10.0	2.2	2.6
5th	862	48	58.4	27.4	9.0	2.4	2.8
6th	745	52	54.9	27.9	12.3	2.7	2.1
7th	485	36	53.0	27.2	14.2	2.7	2.9
8th	618	43	52.1	28.2	13.9	2.1	3.7
9th	390	28	51.5	30.0	10.5	4.1	3.8
10th	494	20	47.4	31.2	15.8	4.0	1.6
11th	355	17	47.3	25.6	20.6	2.8	3.7
12th	430	15	51.6	30.7	12.3	2.8	2.6
Total	5192	304	53.8	28.1	12.5	2.8	2.8

Table 3.98: School Policy On Student Use Of Drugs And Alcohol At School

Grade Level	N of Valid	N of Miss	Strongly Agree	Agree	Undecided	Disagree	Strongly Disagree
4th	809	49	59.8	28.1	6.9	2.5	2.7
5th	859	51	61.7	25.7	7.0	1.9	3.7
6th	748	49	61.1	27.4	6.7	2.3	2.5
7th	481	40	59.3	28.7	7.3	2.7	2.1
8th	617	44	58.3	28.5	7.5	2.6	3.1
9th	387	31	53.2	31.3	7.5	2.8	5.2
10th	494	20	50.6	27.9	12.3	6.3	2.8
11th	356	16	53.9	26.1	11.0	4.5	4.5
12th	426	19	51.9	27.0	11.7	5.4	4.0
Total	5177	319	57.7	27.7	8.2	3.1	3.3

Table 3.99: School Policy On Student Violence/Bullying

Grade Level	N of Valid	N of Miss	Strongly Agree	Agree	Undecided	Disagree	Strongly Disagree
4th	814	44	61.2	26.4	7.0	2.0	3.4
5th	857	53	61.1	26.8	6.7	1.9	3.5
6th	756	41	61.8	25.5	7.4	3.2	2.1
7th	484	37	58.9	27.9	7.6	3.3	2.3
8th	619	42	58.8	26.5	8.2	3.2	3.2
9th	394	24	53.3	28.2	10.2	3.0	5.3
10th	495	19	49.9	28.5	13.1	5.9	2.6
11th	353	19	49.3	28.9	11.3	5.9	4.5
12th	427	18	50.4	29.0	11.5	5.6	3.5
Total	5199	297	57.4	27.2	8.7	3.4	3.3

Table 3.100: Having A Security (Police) Officer At The School

Grade Level	N of Valid	N of Miss	Strongly Agree	Agree	Undecided	Disagree	Strongly Disagree
4th	817	41	59.0	23.9	11.4	2.7	3.1
5th	865	45	60.6	22.9	10.5	2.5	3.5
6th	754	43	53.1	24.7	17.1	2.8	2.4
7th	484	37	56.8	25.0	11.8	3.5	2.9
8th	623	38	47.7	26.3	18.3	3.7	4.0
9th	393	25	48.9	30.8	13.5	3.6	3.3
10th	495	19	40.6	23.2	26.3	6.5	3.4
11th	352	20	48.0	23.0	19.6	5.1	4.3
12th	431	14	46.2	25.3	19.3	5.1	4.2
Total	5214	282	52.5	24.7	15.7	3.7	3.4

Table 3.101: Drug Screening Of Students By The School

Grade Level	N of Valid	N of Miss	Strongly Agree	Agree	Undecided	Disagree	Strongly Disagree
4th	814	44	52.2	21.3	17.9	3.8	4.8
5th	864	46	52.7	22.7	15.3	3.8	5.6
6th	753	44	44.8	22.6	19.5	6.0	7.2
7th	481	40	44.9	21.2	21.4	6.0	6.4
8th	620	41	41.0	21.8	20.5	8.5	8.2
9th	398	20	41.5	25.9	19.6	7.0	6.0
10th	492	22	37.2	21.1	25.8	7.9	7.9
11th	351	21	41.3	20.5	22.2	7.7	8.3
12th	427	18	40.7	22.7	20.6	7.3	8.7
Total	5200	296	45.3	22.2	19.7	6.1	6.8