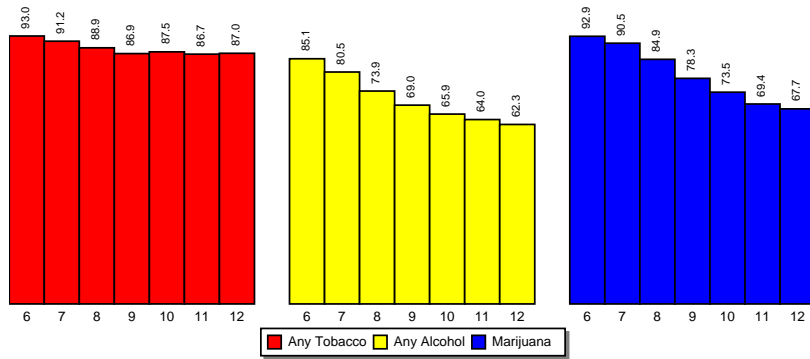


4 Students' Perception of Risk:

Past analysis of national statistics indicate that as students' perception of risk increases, use of substances decrease. It is also typical for the perception of risk (*Harmful or Very Harmful*) to decrease as a child gets older. Your students' responses are detailed in the following tables.

% Students Who Perceive Tobacco, Alcohol & Marijuana As Harmful or Very Harmful (Past Year)



Source: PRIDE Surveys

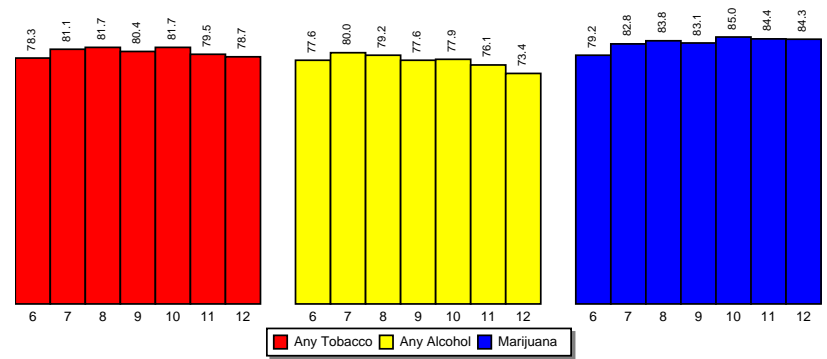
Table 4: Students' Perception of Risk of **Tobacco**

Grade Level	N of Valid	N of Miss	Harmful or Very Harmful
6th	14889	287	93.0
7th	17953	317	91.2
8th	23471	463	88.9
9th	15981	254	86.9
10th	16251	282	87.5
11th	14862	272	86.7
12th	8921	199	87.0
Jr Hi	56313	1067	90.7
Sr Hi	56015	1007	87.0
Total	112328	2074	88.9

5 Students' Perception of Disapproval:

Past analysis of national statistics indicate that students tend to perceive parents as *Disapproving or Strongly Disapproving* of student use of tobacco, alcohol and marijuana for all grade levels. Your students responses are detailed in the following tables.

% Students Who Perceive Parents Disapprove or Strongly Disapprove Of Their Use of Tobacco, Alcohol and Marijuana (Past Year)



Source: PRIDE Surveys

Table 7: Students' Perception of **Parents' Disapproval of Tobacco**

Grade Level	N of Valid	N of Miss	Disapprove or Strongly Disapprove
6th	13718	1458	78.3
7th	16889	1381	81.1
8th	22141	1793	81.7
9th	14831	1404	80.4
10th	15326	1207	81.7
11th	13807	1327	79.5
12th	8362	758	78.7
Jr Hi	52748	4632	80.6
Sr Hi	52326	4696	80.3
Total	105074	9328	80.5

6 Age of First Use:

The question *At what age did you first use...* is used to measure this statistic. The possible responses to this question range from *8 or Under* to *17 or Older*. The table shows the age range that represents the average category score for this question of those students who answered the question with a response other than *Never Used*.

Table 13: When did you first use any **tobacco**?

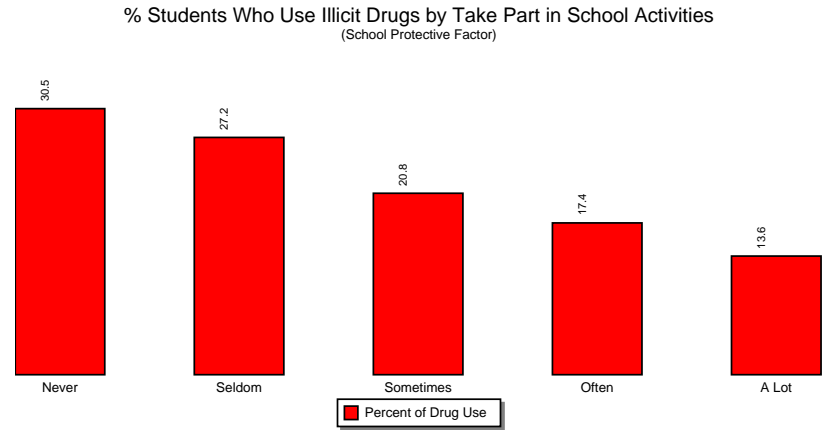
Grade Level	N of Valid	N of Miss	Avg Cat Score	Rounded Cat Score	Avg Age Cat
6th	14723	416	3.644	4	10
7th	17838	427	4.282	4	10
8th	23359	574	4.863	5	11
9th	15795	412	5.580	6	12
10th	15821	423	6.037	6	12
11th	13578	747	6.114	6	12
12th	7923	1207	6.152	6	12
Jr Hi	55920	1417	4.506	5	11
Sr Hi	53117	2789	5.955	6	12
Total	109037	4206	5.441	5	11

Table 14: When did you first use any **alcohol**?

Grade Level	N of Valid	N of Miss	Avg Cat Score	Rounded Cat Score	Avg Age Cat
6th	14703	435	3.672	4	10
7th	17817	454	4.338	4	10
8th	23314	609	5.058	5	11
9th	15714	443	5.876	6	12
10th	15526	496	6.394	6	12
11th	12829	1018	6.580	7	13
12th	7433	1754	6.498	6	12
Jr Hi	55834	1498	4.619	5	11
Sr Hi	51502	3711	6.315	6	12
Total	107336	5209	5.658	6	12

11 Risk and Protective Factors:

The following graphs on illicit drug use by risk & protective factors show for each category (Never, Seldom, Sometimes, Often, A Lot) of a risk or protective factor question the percentage of students who report using illicit drugs. For example, on the question of taking part in school activities, if the bar labeled NEVER was 40%, this means that OF those students who responded NEVER to taking part in school activities, 40% reported using an illicit drug.



Source: PRIDE Surveys -- For the group of students who responded NEVER to this question, 30.5 reported using illicit drugs, for A LOT, 13.6 reported using illicit drugs