

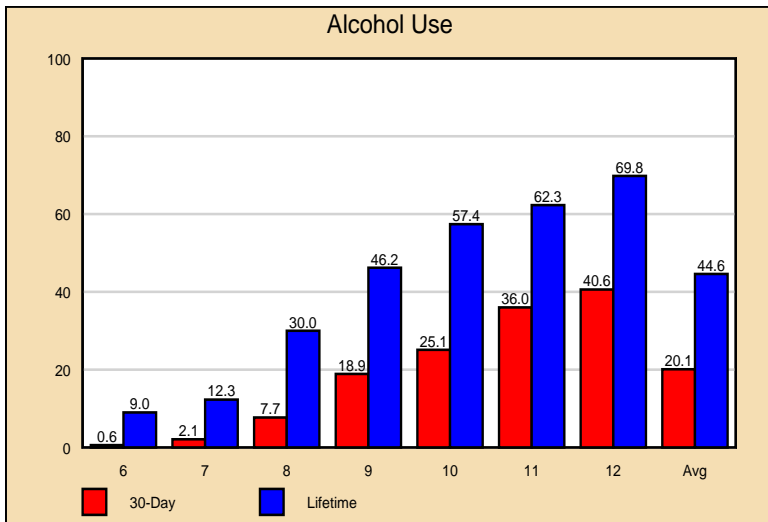
Communities That Care Youth Survey / Sample Report

Created by Pride Surveys

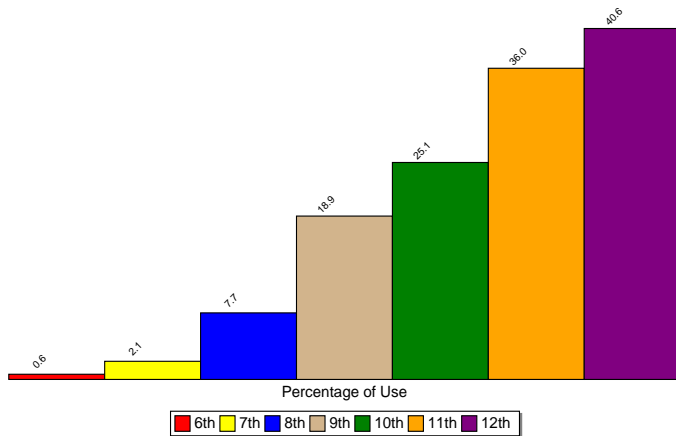
March 27, 2014

Outline

- 1 Frequency of Use
- 2 Perception of Risk
- 3 Parental Disapproval
- 4 Average Age of Onset
- 5 Availability
- 6 Risk and Protective Factors

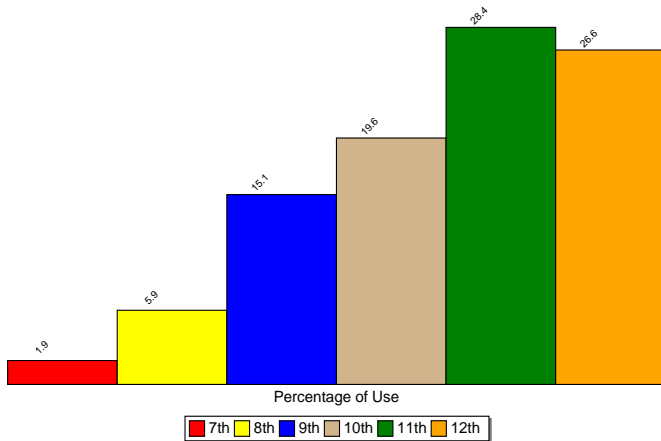


Reported Use in the Past 30 Days of Alcoholic Beverages



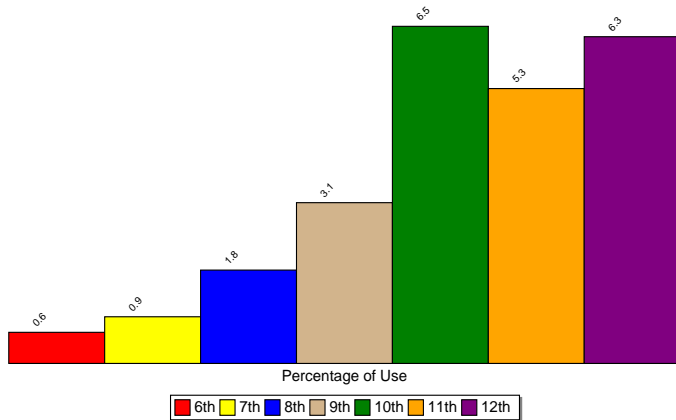
Source: Pride Surveys

Reported Use in the Past 30 Days of Marijuana



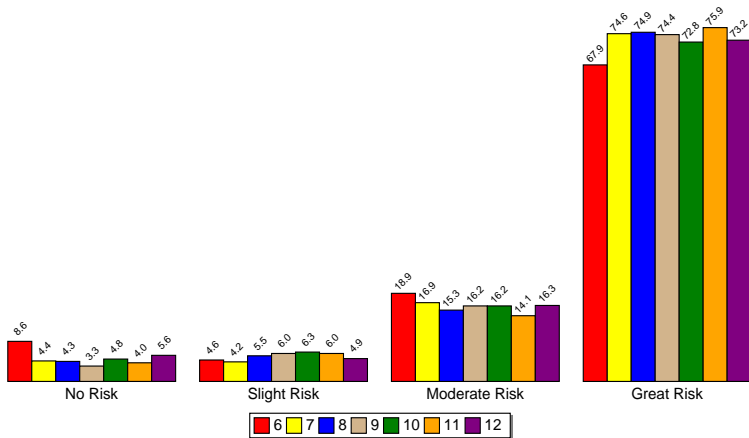
Source: Pride Surveys

Reported Use in the Past 30 Days of Prescription Drugs



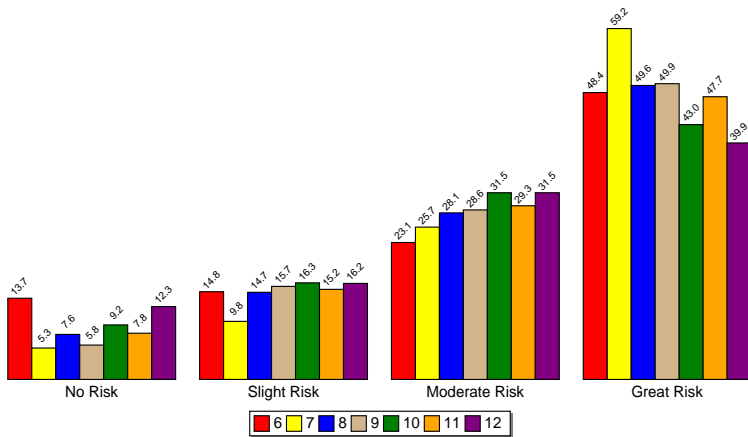
Source: Pride Surveys

Perception of Risk -- Cigarettes



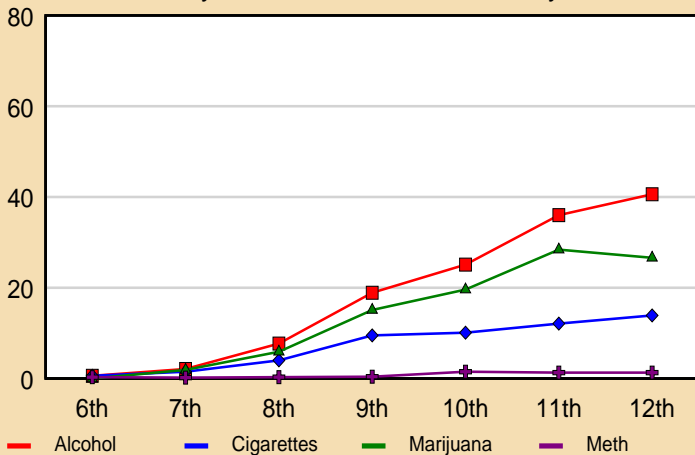
Source: Pride Surveys

Perception of Risk -- Alcohol

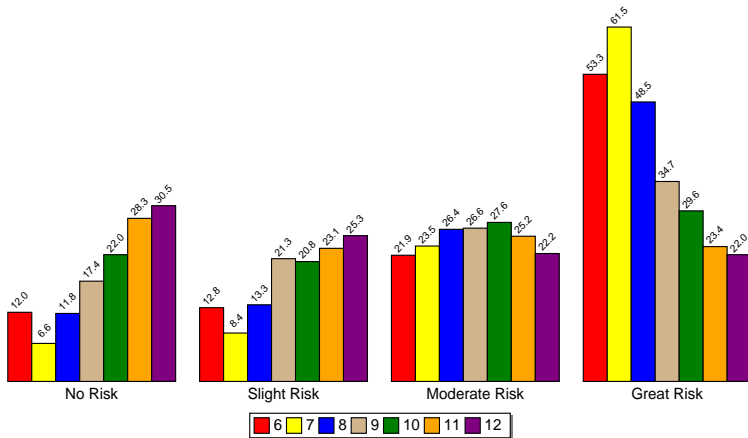


Source: Pride Surveys

Past-30-Day Use of Selected ATODs by Grade

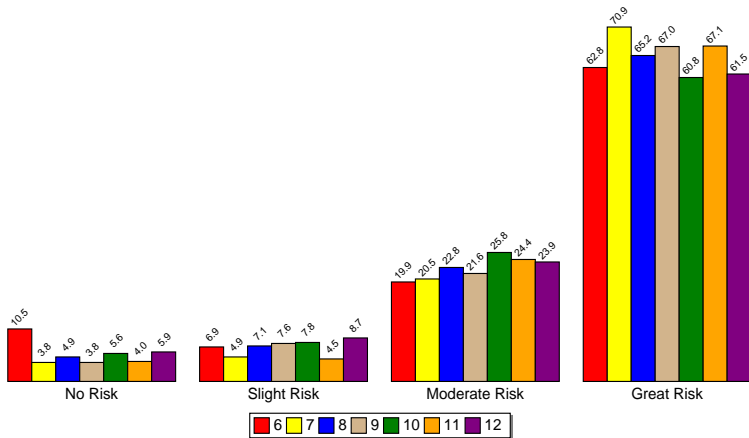


Perception of Risk -- Marijuana



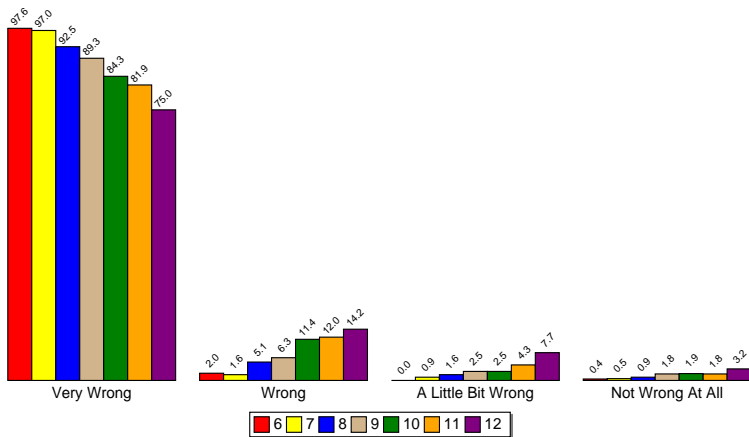
Source: Pride Surveys

Perception of Risk -- Prescription Drugs



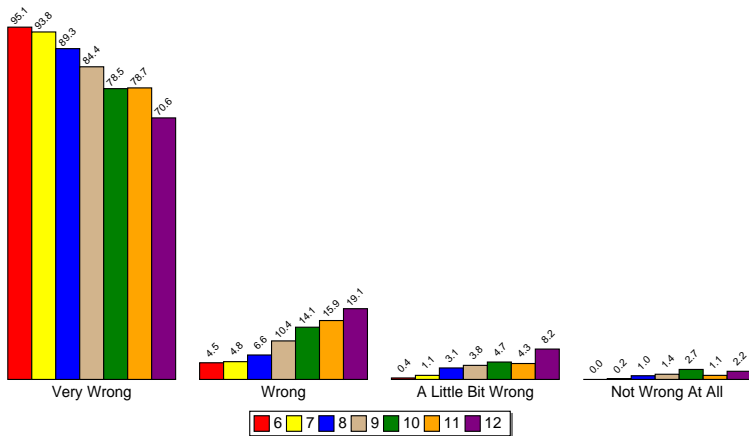
Source: Pride Surveys

Parental Disapproval -- Smoke Tobacco



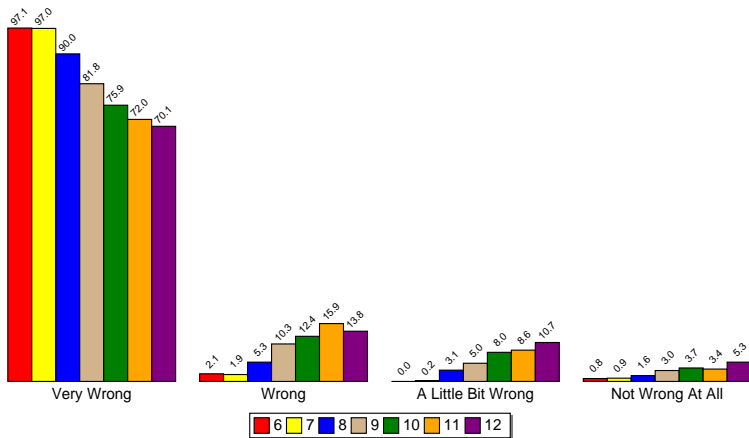
Source: Pride Surveys

Parental Disapproval -- Drink Alcohol



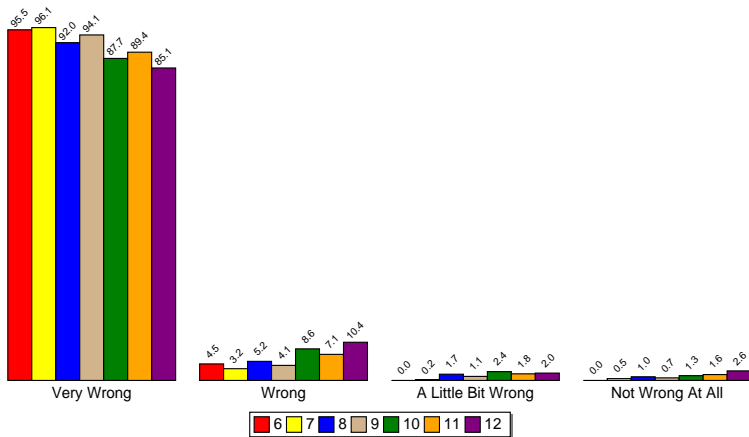
Source: Pride Surveys

Parental Disapproval -- Smoke Marijuana



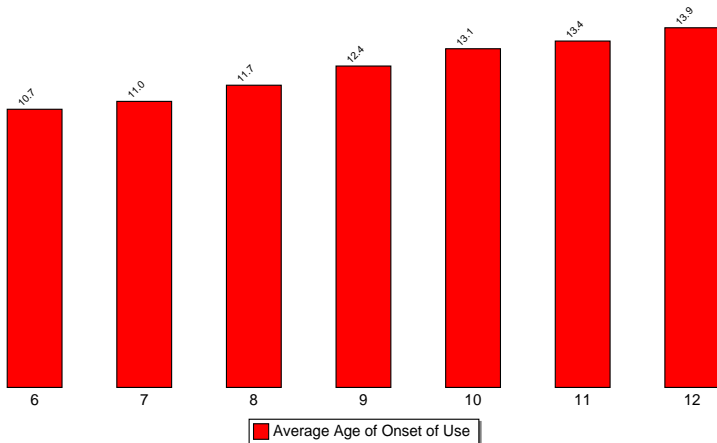
Source: Pride Surveys

Parental Disapproval -- Prescription Drugs



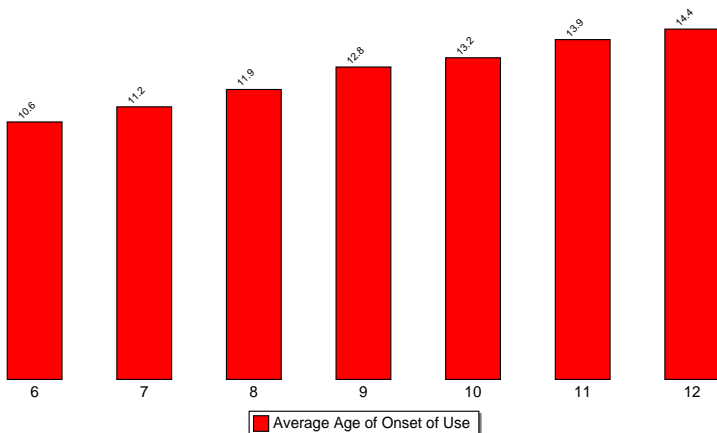
Source: Pride Surveys

Average Age of Onset of Use of Cigarettes



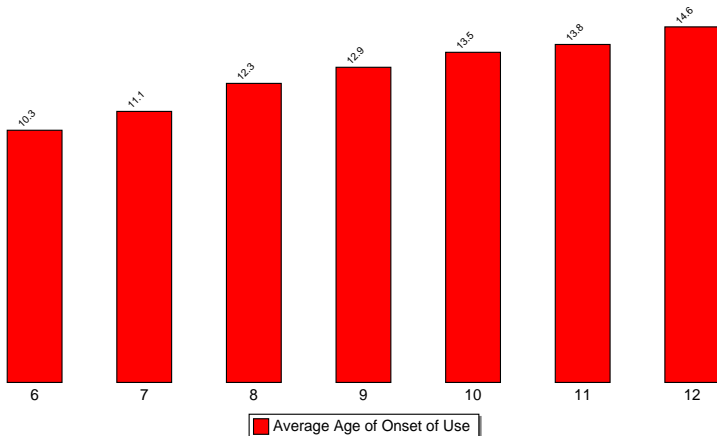
Source: Pride Surveys

Average Age of Onset of Use of Alcohol



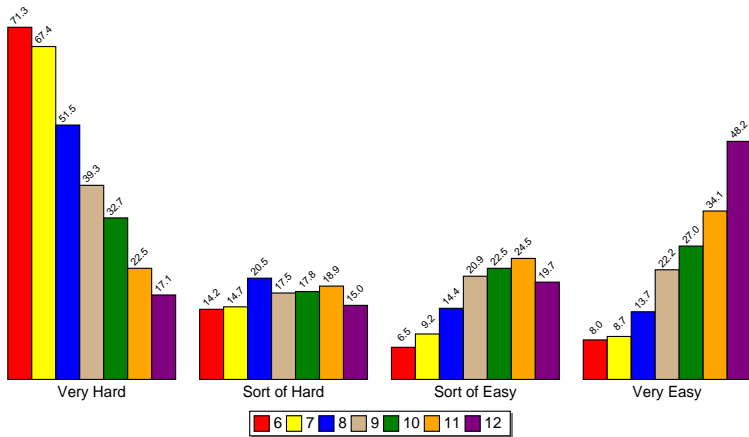
Source: Pride Surveys

Average Age of Onset of Use of Marijuana



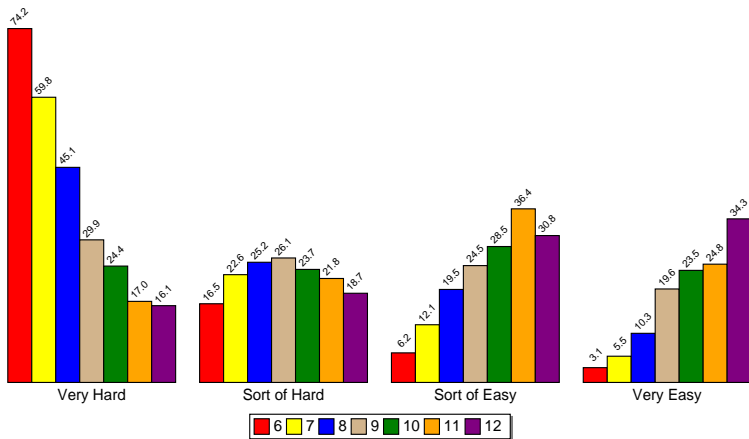
Source: Pride Surveys

Availability -- Cigarettes



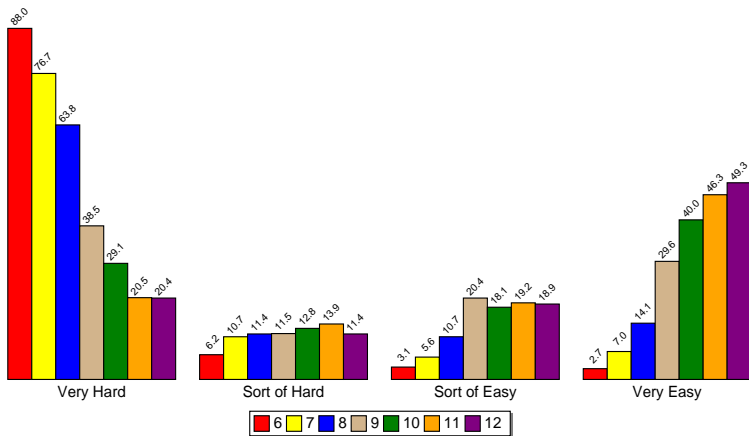
Source: Pride Surveys

Availability -- Alcohol



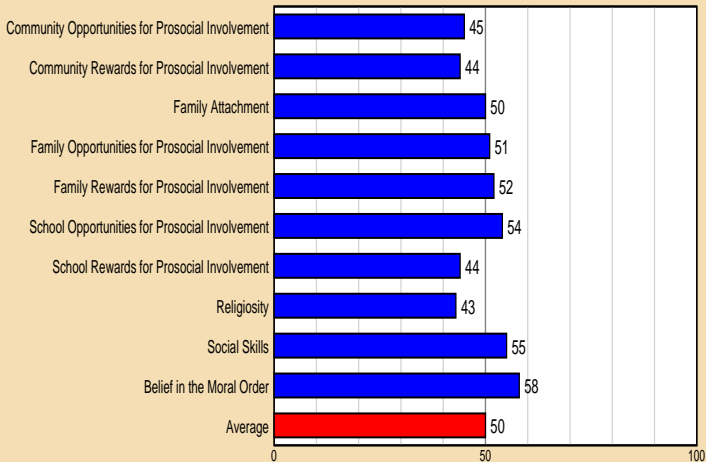
Source: Pride Surveys

Availability -- Marijuana



Source: Pride Surveys

Overall Protective Factor Scale Scores



Overall Risk Factor Scale Scores

