

PRIDE QUESTIONNAIRE REPORT

2000-01 National Summary
Grades 4 through 6

UE000001-220

Mon Aug 19 11:33:03 CDT 2002



CHAPTER 1

INTRODUCTION

The following summary, graphs, and tables are compiled from data collected in your school(s) using the PRIDE Questionnaire. These data reflect prevalence and patterns of local drug and alcohol use. It is important that this report be utilized as part of your drug abuse awareness and prevention program. We strongly suggest that you

COPY THE FOLLOWING PAGES

and

DISTRIBUTE THEM TO YOUR FACULTY.

The pages highlight and graphically summarize drug use by students in your school.

- Number of 4th grade students surveyed: 9121
- Number of 5th grade students surveyed: 10972
- Number of 6th grade students surveyed: 5027
- Number of students surveyed: 25120

1.1. Tobacco Use

2.5 percent of your 4th grade students said they smoked cigarettes within the past year (1999-00 PRIDE National Avg. = 2.9%). **3.7** percent of your 5th grade students said they smoked cigarettes within the past year (1999-00 PRIDE National Avg. = 3.8%). **8.3** percent of your 6th grade students said they smoked cigarettes within the past year (1999-00 PRIDE National Avg. = 7.5%).

1.1 percent of your 4th grade students said they used chewing tobacco or snuff within the past year (1999-00 PRIDE National Avg. = 1.5%). **1.5** percent of your 5th grade students said they used chewing tobacco or snuff within the past year (1999-00 PRIDE National Avg. = 1.6%). **1.5** percent of your 6th grade students said they used chewing tobacco or snuff within the past year (1999-00 PRIDE National Avg. = 2.3%).

1.2. Alcohol Use

6.1 percent of your 4th grade students said they drank beer within the past year (1999-00 PRIDE National Avg. = 6.3%). **6.7** percent of your 5th grade students said they drank beer within the past year (1999-00 PRIDE National Avg. = 6.6%). **10.2** percent of your 6th grade students said they drank beer within the past year (1999-00 PRIDE National Avg. = 9.4%).

6.4 percent of your 4th grade students said they drank wine coolers within the past year (1999-00 PRIDE National Avg. = 6.8%). **8.1** percent of your 5th grade students said they drank wine coolers within the past year (1999-00 PRIDE National Avg. = 8.2%). **12.5** percent of your 6th grade students said they drank wine coolers within the past year (1999-00 PRIDE National Avg. = 11.7%).

2.1 percent of your 4th grade students said they drank liquor within the past year (1999-00 PRIDE National Avg. = 2.3%). **3.0** percent of your 5th grade students said they drank liquor within the past year (1999-00 PRIDE National Avg. = 3.1%). **5.4** percent of your 6th grade students said they drank liquor within the past year (1999-00 PRIDE National Avg. = 5.2%).

NOTE: Beer and wine coolers are the favorite intoxicants of American students.

1.3. Marijuana Use

2.0 percent of your 6th grade students said they smoked marijuana within the past year (1999-00 PRIDE National Avg. = 1.6%).

1.4. Inhalant Use

4.0 percent of your 4th grade students said they sniffed glue, gas, etc. within the past year (1999-00 PRIDE National Avg. = 5.3%). **3.5** percent of your 5th grade students said they sniffed

Local percentages below 1% are not reported.

glue, gas, etc. within the past year (1999-00 PRIDE National Avg. = 5.0%). **4.4** percent of your 6th grade students said they sniffed glue, gas, etc. within the past year (1999-00 PRIDE National Avg. = 4.3%).

1.5. What You Can Do As A Parent, Teacher, Or Concerned Citizen?

The drug merchandisers thrive on the ignorance, apathy, and irresponsibility of ordinary citizens.

YOU CAN MAKE A DIFFERENCE!

Here's how:

- (1) Educate yourself and your family about the health hazards of drugs.
- (2) Insist on no illegal drug use by youngsters. This includes alcohol, tobacco and marijuana.
- (3) Support drug education in the schools, workplace, churches and civic associations.
- (4) Rebuild understanding and respect for the laws concerning alcohol, marijuana, cocaine and other drugs.
- (5) Recognize the danger of the illegal consumer as well as the illegal supplier of alcohol and other drugs.
- (6) Support law-enforcement efforts at home and abroad.
- (7) Write letters, telephone and visit those members of the publishing, merchandising and media world who glamorize, trivialize or subsidize the drug culture.

CHAPTER 2

STANDARD GRAPHICS

The following graphs will assist you in understanding the relationship of student behavior to alcohol and other drug usage. You are encouraged to make overheads or slides from the graphs for presentations to school faculty, parents, media, and other audiences in the community.

The *Frequency of Use* graphs show the percent of students at each grade level who report any use of the various drugs. The graphs are divided into *Gateway* and *Illicit* drug categories.

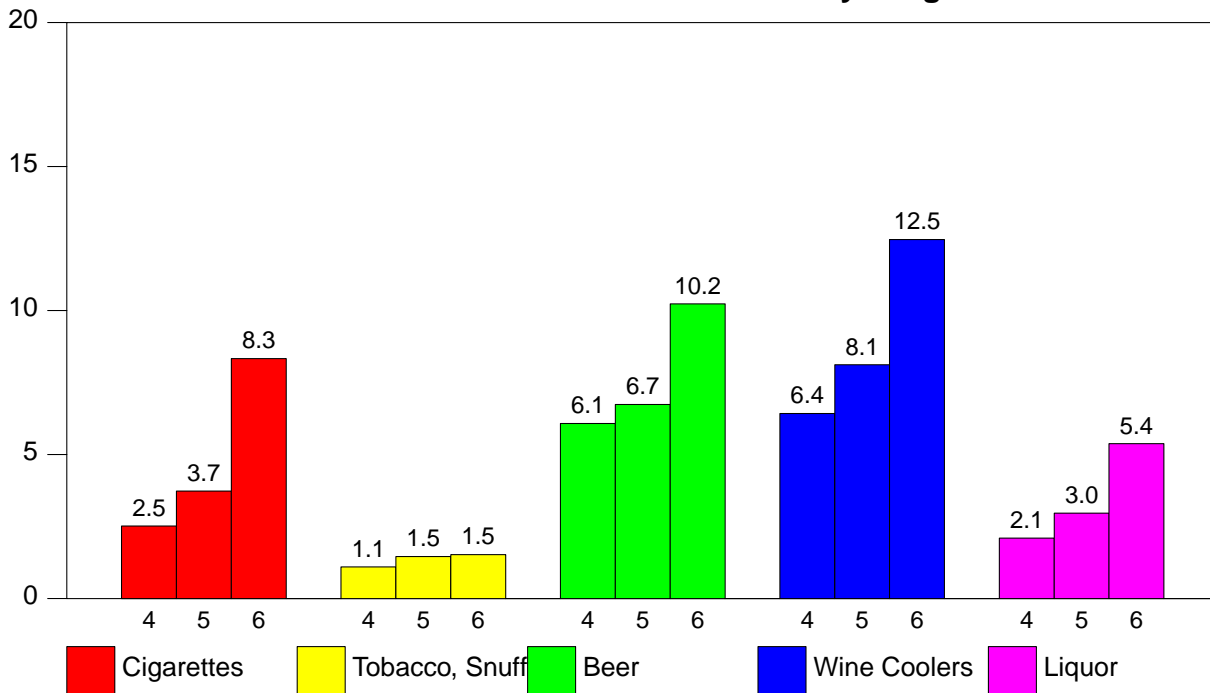
The *Perceived Harm* of alcohol and other drugs will assist with understanding how the false assumptions concerning harm are related to drug use. When drugs are perceived as harmless, the probability of use increases. These graphs show the percent of students who marked *Yes* or *A Lot* on the question *Do You Think The Following Are Harmful To Your Health*.

Research indicates that easy access, *Availability*, to drug increases the probability of use. Availability of alcohol and other drugs normally increases at higher grade levels. These graphs show the percent of students who marked *Easy To Get* on the question *How Easy Is It For Kids Your Age To Get*.

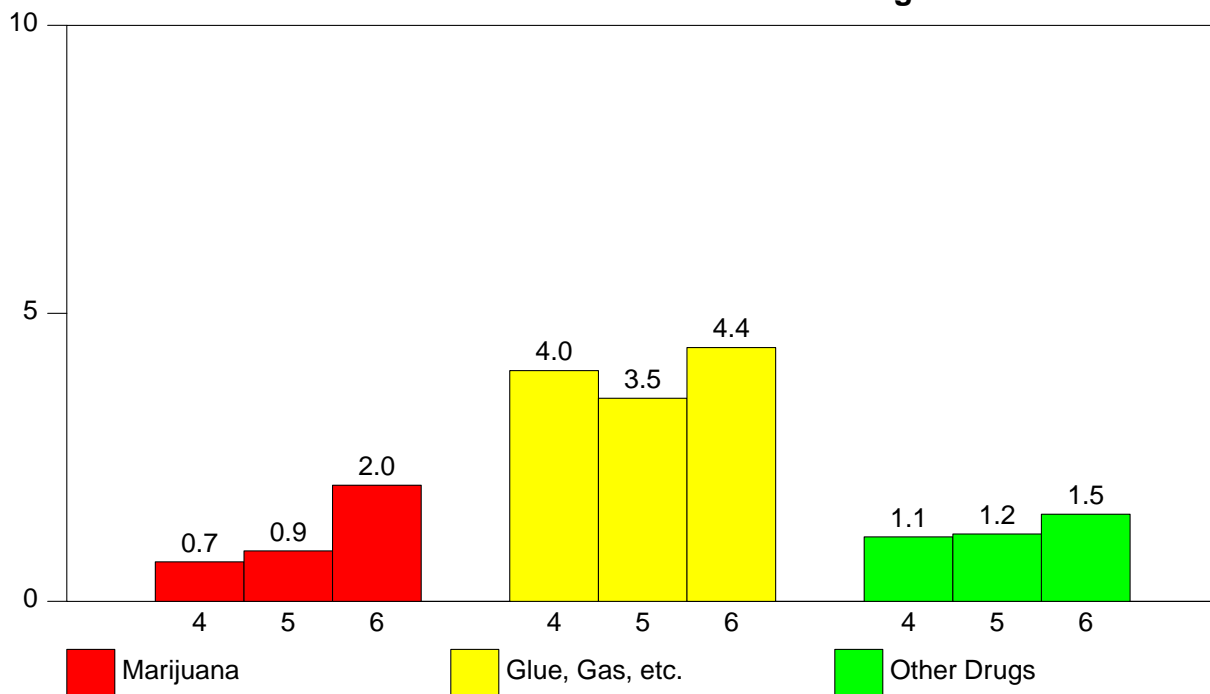
Data collected in past years using the **PRIDE Surveys Questionnaire** indicate a high correlation between friends use of drugs and an individual students use of drugs (i.e. a student who reports use of drugs by friends is more likely to use drugs). These graphs show the percent of students who marked *A Lot* on the question *How Many Of Your Friends Use*.

2.1. Frequency Of Use

2.1 - % Students Who Use Gateway Drugs

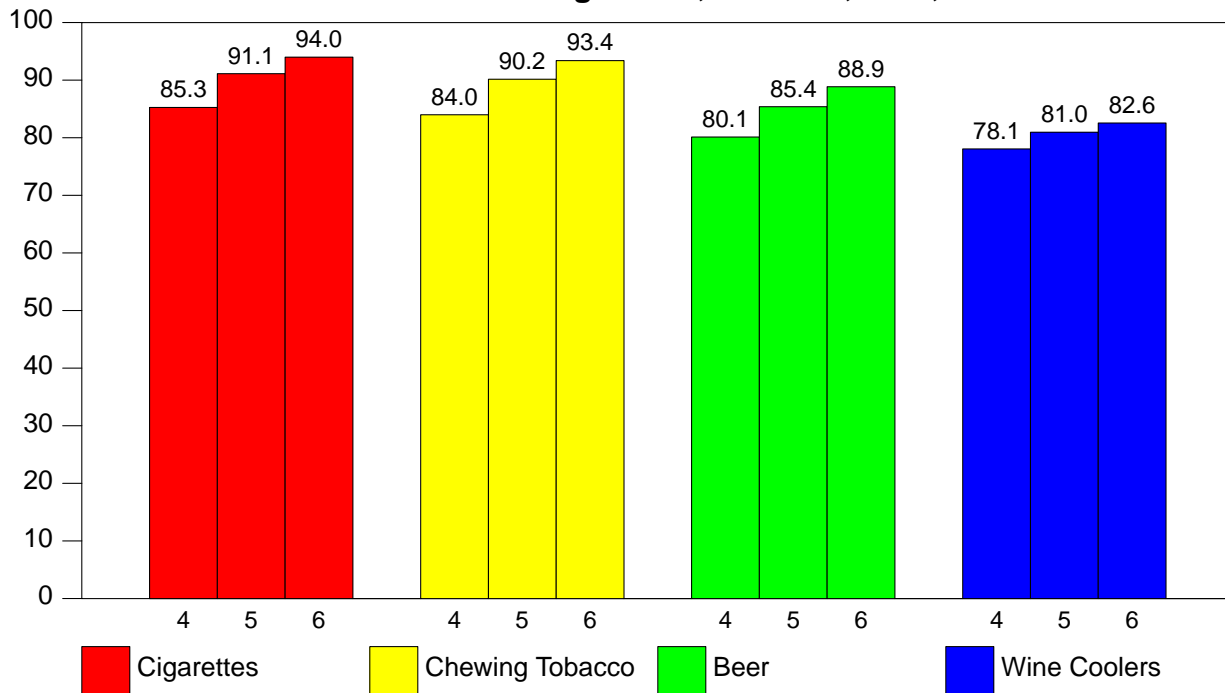


2.2 - % Students Who Use Illicit Drugs

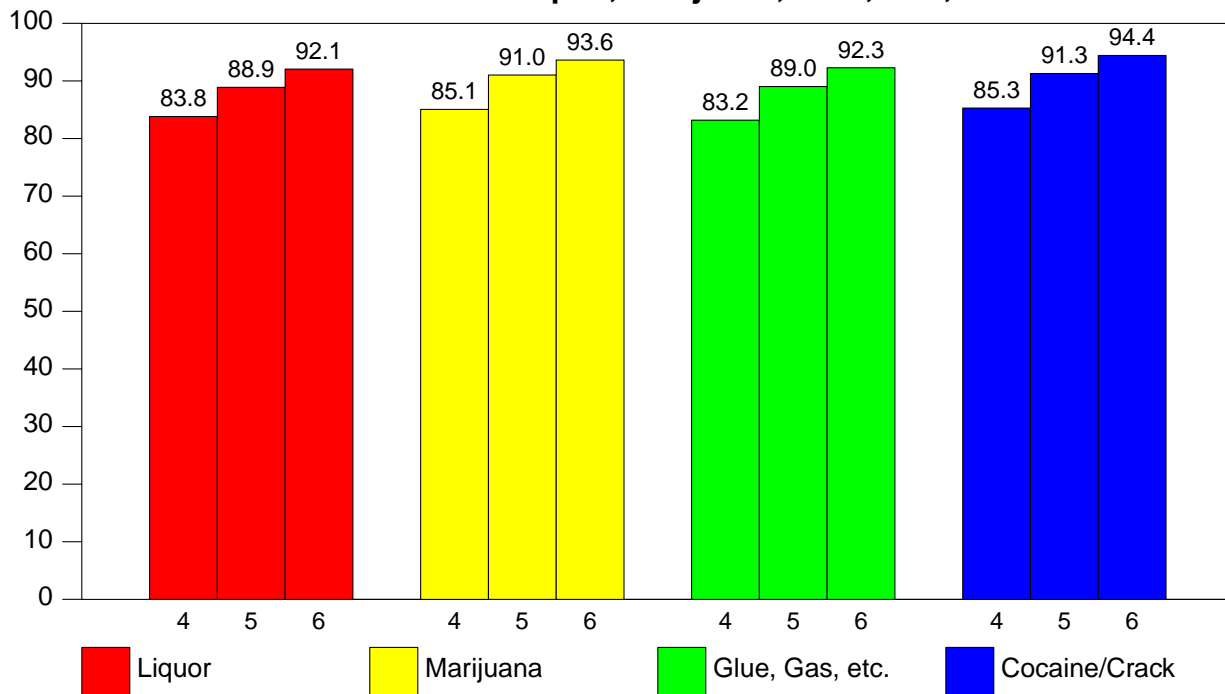


2.2. Harmful To Health

2.3 - Harmful to Health -- Cigarettes, Tobacco, Beer, Wine Coolers

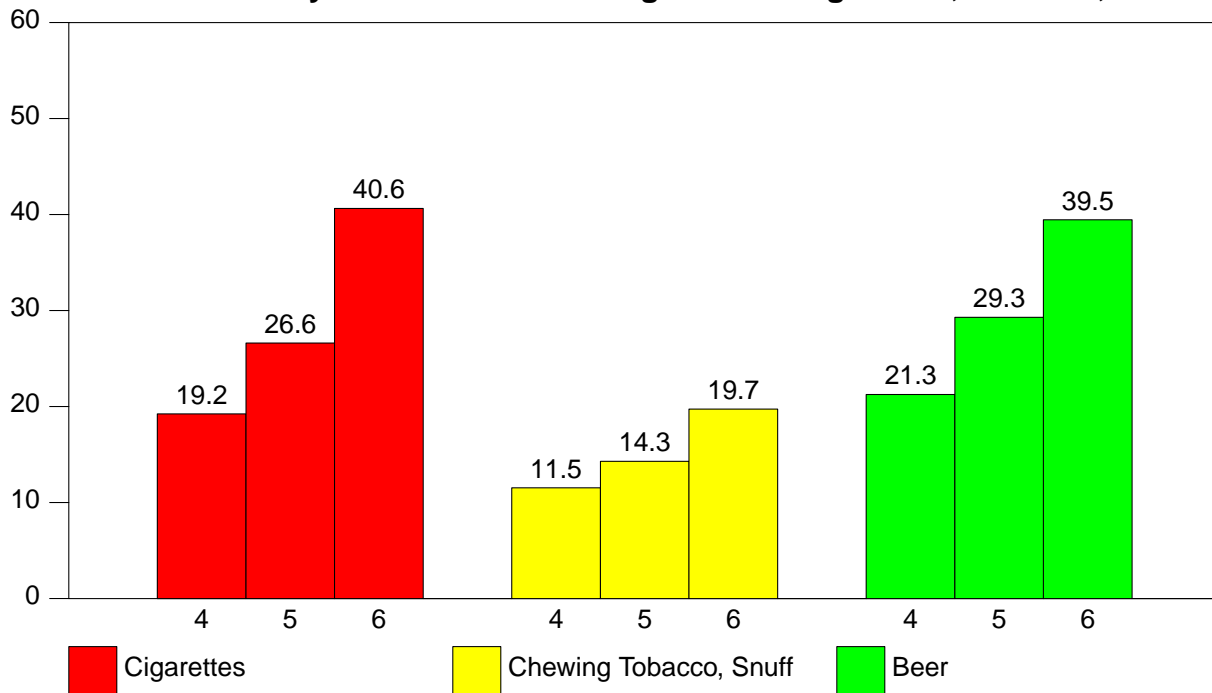


2.4 - Harmful to Health -- Liquor, Marijuana, Glue, Gas, Cocaine/Crack

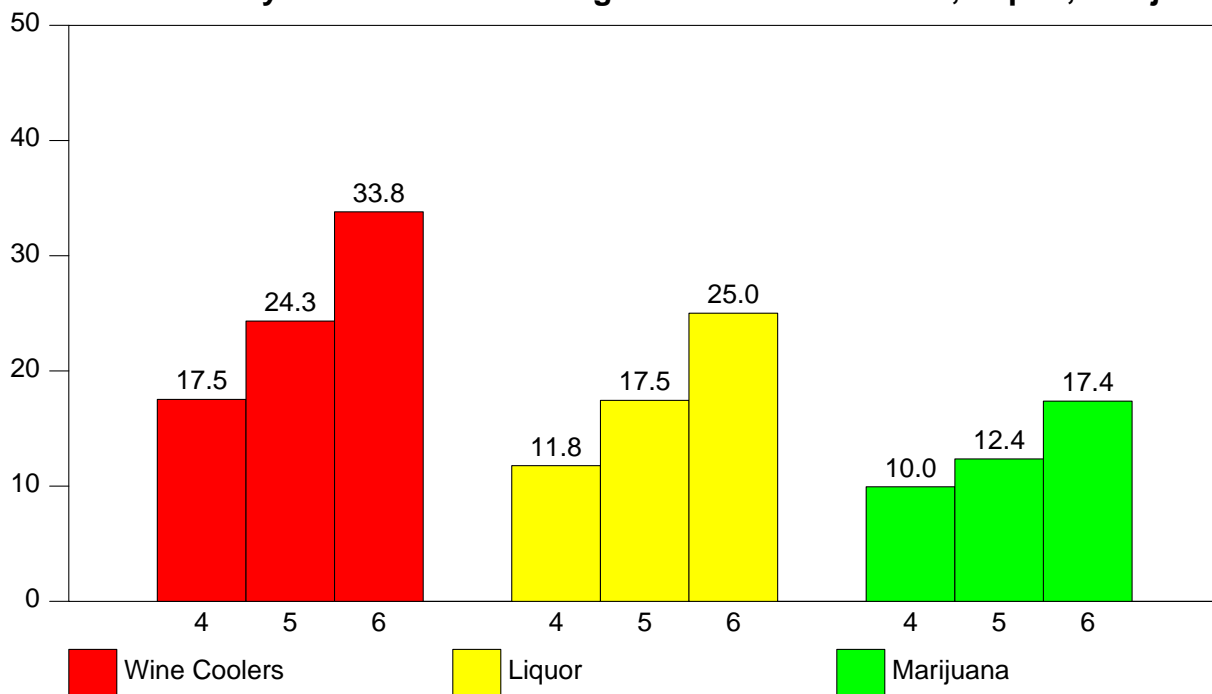


2.3. How Easy Is It For Kids Your Age To Get

2.5 - How Easy Is It For Kids Your Age To Get Cigarettes, Tobacco, Beer

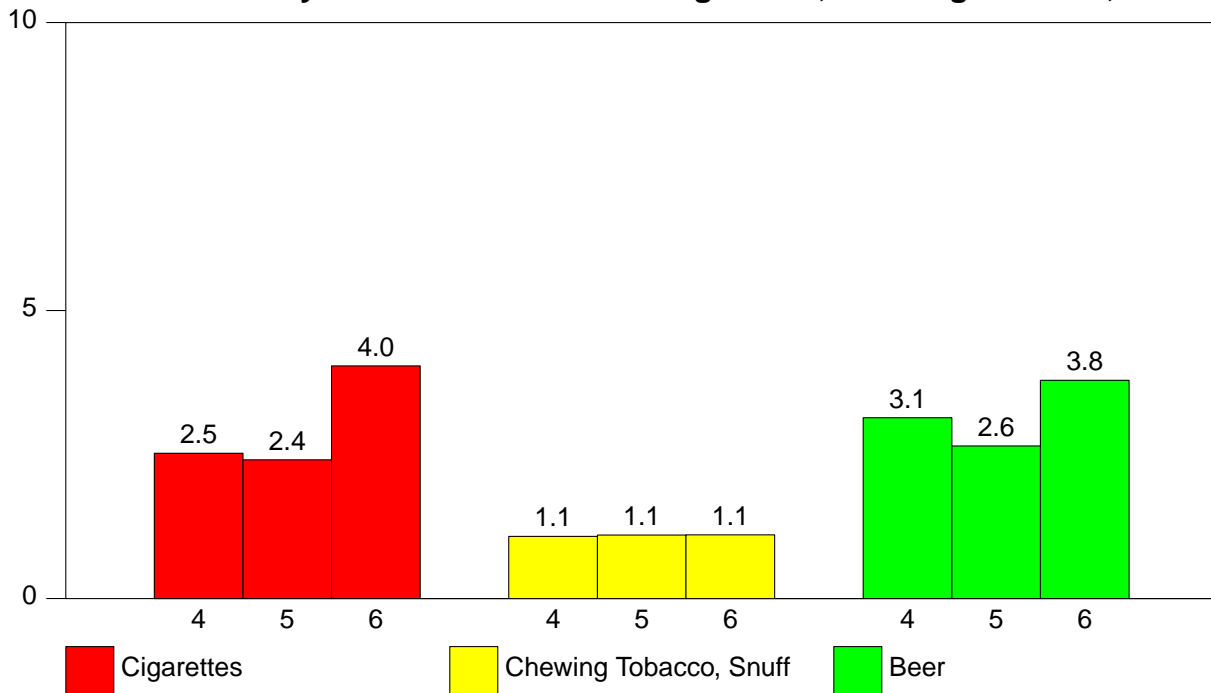


2.6 - How Easy Is It For Kids Your Age To Get Wine Coolers, Liquor, Marijuana

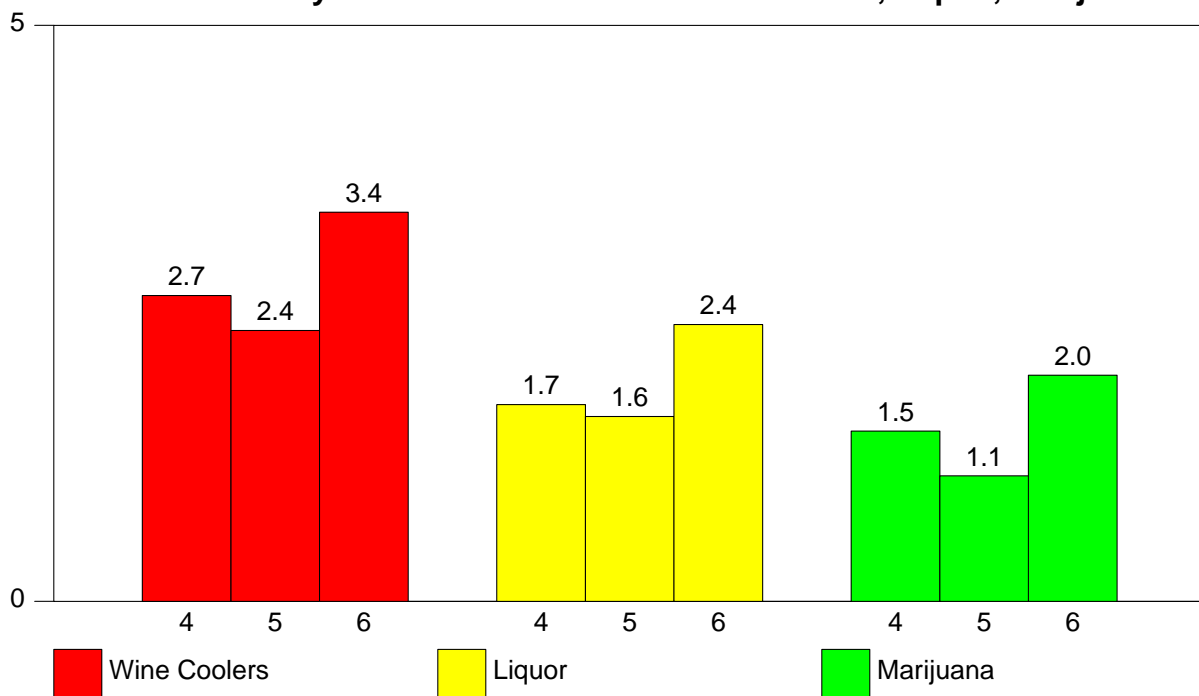


2.4. How Many Of Your Friends

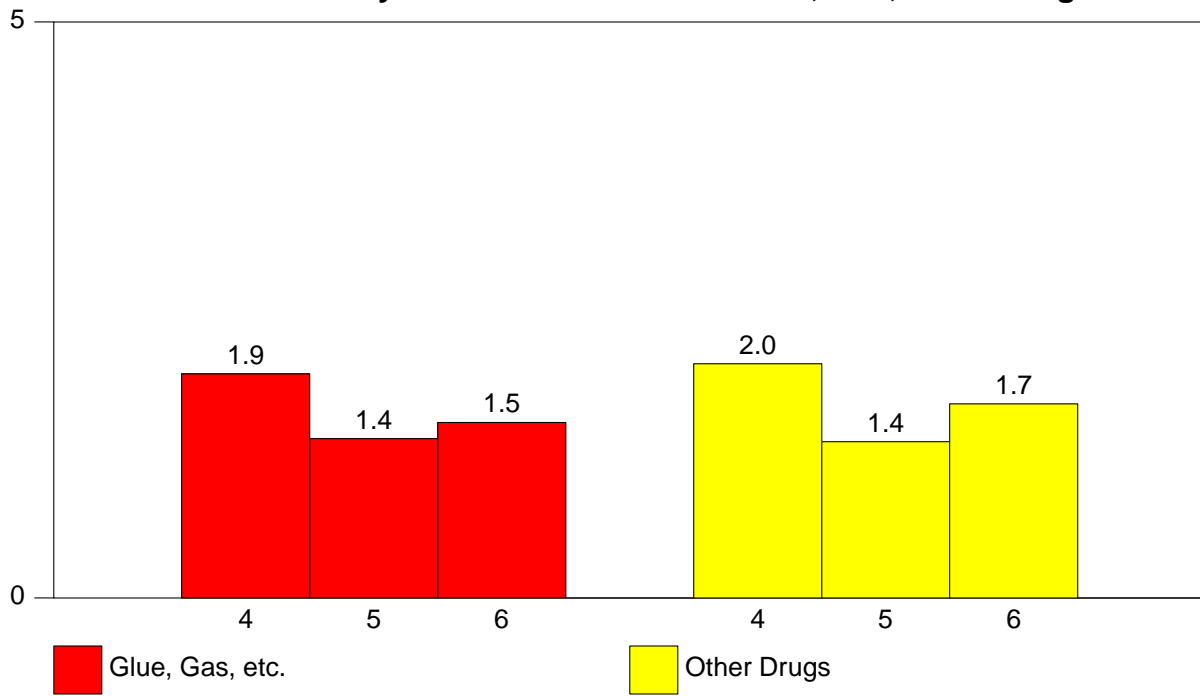
2.7 - How Many Of Your Friends Used Cigarettes, Chewing Tobacco, Beer



2.8 - How Many Of Your Friends Used Wine Coolers, Liquor, Marijuana



2.9 - How Many Of Your Friends Used Glue, Gas, Other Drugs



CHAPTER 3

PERCENTAGE TABLES

This chapter contains your school survey results in tabular form. Each table corresponds to an item on the questionnaire. The tables contain percentage data by grade level, (grades 4 through 6), and *Total*. The *N of Valid* column contains the number of students responding to the item and the *N of Missing* column contains the number of students not responding to the item. The remaining columns contain the percentages of students responding to the particular response categories.

The percentage tables of the report appear in the same order as corresponding questions on the questionnaire. The Table of Contents contains the percentage tables by section and gives the page number where each section is located. The List of Tables contains the location of each individual table.

The last section of tables presents the frequency of drug use data with the categories *collapsed* as follows:

- Weekly Use - *1-7 Times A Week*
- Monthly Use - *1-2 Times A Month + 1-7 Times A Week*
- Annual Use - *1-6 Times A Year + 1-2 Times A Month
+ 1-7 Times A Week*

3.1. Personal & Family Information

3.1 - Sex

<i>Grade Level</i>	<i>N of Valid</i>	<i>N of Miss</i>	<i>Male</i>	<i>Female</i>
4th	9092	27	50.6	49.4
5th	10955	17	49.9	50.1
6th	5020	7	50.1	49.9
Total	25067	51	50.2	49.8

3.2 - Ethnic Origin

<i>Grade Level</i>	<i>N of Valid</i>	<i>N of Miss</i>	<i>White</i>	<i>Black</i>	<i>Hispanic</i>	<i>Asian</i>	<i>Native American</i>
4th	8707	127	53.6	39.9	4.6	0.6	1.3
5th	10603	106	65.7	27.8	4.5	1.0	1.0
6th	4848	64	76.0	17.6	4.3	1.0	1.1
Total	24158	297	63.4	30.1	4.5	0.9	1.1

3.3 - Age

<i>Grade Level</i>	<i>N of Valid</i>	<i>N of Miss</i>	8	9	10	11	12	13	14+
4th	9055	66	0.8	47.8	43.6	6.9	0.9	0.0	0.0
5th	10922	50	0.0	0.5	43.2	49.7	6.1	0.6	0.0
6th	5002	25	0.0	0.0	0.7	48.1	44.9	5.7	0.5
Total	24979	141	0.3	17.6	34.8	33.8	12.0	1.4	0.1

3.2. Student Characteristics

3.4 - I make good grades.

<i>Grade Level</i>	<i>N of Valid</i>	<i>N of Miss</i>	<i>Never</i>	<i>Sometimes</i>	<i>A Lot</i>
4th	9046	75	1.2	57.4	41.4
5th	10912	60	0.7	51.5	47.8
6th	5005	22	0.8	49.9	49.4
Total	24963	157	0.9	53.3	45.8

3.5 - I get into trouble at school.

<i>Grade Level</i>	<i>N of Valid</i>	<i>N of Miss</i>	<i>Never</i>	<i>Sometimes</i>	<i>A Lot</i>
4th	8969	152	36.4	58.7	4.8
5th	10865	107	38.3	57.7	4.1
6th	4988	39	44.0	51.4	4.6
Total	24822	298	38.8	56.8	4.5

3.6 - I go to church or synagogue.

<i>Grade Level</i>	<i>N of Valid</i>	<i>N of Miss</i>	<i>Never</i>	<i>Sometimes</i>	<i>A Lot</i>
4th	8933	188	15.8	37.7	46.6
5th	10787	185	13.1	38.1	48.8
6th	4960	67	15.9	40.1	44.0
Total	24680	440	14.6	38.4	47.0

3.7 - I talk to my parents about my problems.

<i>Grade Level</i>	<i>N of Valid</i>	<i>N of Miss</i>	<i>Never</i>	<i>Sometimes</i>	<i>A Lot</i>
4th	9000	121	12.1	45.6	42.3
5th	10883	89	12.3	49.5	38.2
6th	5001	26	14.7	53.4	31.9
Total	24884	236	12.7	48.9	38.4

3.8 - My parents talk to me about the dangers of using drugs.

<i>Grade Level</i>	<i>N of Valid</i>	<i>N of Miss</i>	<i>Never</i>	<i>Sometimes</i>	<i>A Lot</i>
4th	8923	198	10.6	28.7	60.8
5th	10806	166	9.6	35.2	55.2
6th	4959	68	11.1	40.9	48.0
Total	24688	432	10.3	34.0	55.8

3.9 - My teachers talk to me about the dangers of using drugs.

<i>Grade Level</i>	<i>N of Valid</i>	<i>N of Miss</i>	<i>Never</i>	<i>Sometimes</i>	<i>A Lot</i>
4th	8945	176	7.6	38.7	53.7
5th	10834	138	6.4	42.7	51.0
6th	4982	45	7.5	46.4	46.0
Total	24761	359	7.0	42.0	51.0

3.10 - My parents make me follow certain rules.

<i>Grade Level</i>	<i>N of Valid</i>	<i>N of Miss</i>	<i>Never</i>	<i>Sometimes</i>	<i>A Lot</i>
4th	8987	134	3.7	27.3	69.0
5th	10869	103	2.8	30.4	66.9
6th	5000	27	2.8	32.8	64.4
Total	24856	264	3.1	29.8	67.1

3.11 - I have to be home at a certain time.

<i>Grade Level</i>	<i>N of Valid</i>	<i>N of Miss</i>	<i>Never</i>	<i>Sometimes</i>	<i>A Lot</i>
4th	8904	217	19.5	41.4	39.1
5th	10745	227	14.5	45.4	40.1
6th	4951	76	11.0	48.2	40.9
Total	24600	520	15.6	44.5	39.9

3.12 - I go to parties.

<i>Grade Level</i>	<i>N of Valid</i>	<i>N of Miss</i>	<i>Never</i>	<i>Sometimes</i>	<i>A Lot</i>
4th	8933	188	11.2	56.4	32.4
5th	10751	221	10.1	60.4	29.5
6th	4953	74	10.0	62.6	27.3
Total	24637	483	10.5	59.4	30.1

3.13 - I am alone at home.

<i>Grade Level</i>	<i>N of Valid</i>	<i>N of Miss</i>	<i>Never</i>	<i>Sometimes</i>	<i>A Lot</i>
4th	8901	220	47.6	44.4	8.0
5th	10761	211	34.3	55.7	10.1
6th	4954	73	24.4	62.2	13.4
Total	24616	504	37.1	52.9	10.0

3.14 - The kids at school like me.

<i>Grade Level</i>	<i>N of Valid</i>	<i>N of Miss</i>	<i>Never</i>	<i>Sometimes</i>	<i>A Lot</i>
4th	8940	181	5.8	40.6	53.6
5th	10779	193	4.0	36.8	59.2
6th	4961	66	2.7	35.9	61.4
Total	24680	440	4.4	38.0	57.6

3.15 - I feel lonely.

<i>Grade Level</i>	<i>N of Valid</i>	<i>N of Miss</i>	<i>Never</i>	<i>Sometimes</i>	<i>A Lot</i>
4th	8958	163	45.6	41.7	12.8
5th	10814	158	51.3	39.9	8.8
6th	4978	49	54.5	37.5	7.9
Total	24750	370	49.9	40.1	10.1

3.3. Within The Past Year How Often Have You Used

3.16 - Within the past year how often have you smoked cigarettes?

<i>Grade Level</i>	<i>N of Valid</i>	<i>N of Miss</i>	<i>Did Not Use</i>	<i>1-6/yr</i>	<i>1-2/mo</i>	<i>1-7/wk</i>
4th	8999	122	97.5	1.3	0.6	0.6
5th	10856	116	96.3	2.1	0.9	0.7
6th	4992	35	91.7	4.8	2.0	1.5
Total	24847	273	95.8	2.4	1.0	0.9

3.17 - Within the past year how often have you chewed tobacco, snuff?

<i>Grade Level</i>	<i>N of Valid</i>	<i>N of Miss</i>	<i>Did Not Use</i>	<i>1-6/yr</i>	<i>1-2/mo</i>	<i>1-7/wk</i>
4th	8987	134	98.9	0.6	0.3	0.3
5th	10814	158	98.5	0.8	0.4	0.3
6th	4981	46	98.5	0.8	0.4	0.3
Total	24782	338	98.7	0.7	0.3	0.3

3.18 - Within the past year how often have you drunk beer?

<i>Grade Level</i>	<i>N of Valid</i>	<i>N of Miss</i>	<i>Did Not Use</i>	<i>1-6/yr</i>	<i>1-2/mo</i>	<i>1-7/wk</i>
4th	8948	173	93.9	3.9	1.4	0.8
5th	10781	191	93.3	4.4	1.4	0.9
6th	4964	63	89.8	7.4	2.0	0.9
Total	24693	427	92.8	4.8	1.5	0.9

3.19 - Within the past year how often have you drunk wine coolers?

<i>Grade Level</i>	<i>N of Valid</i>	<i>N of Miss</i>	<i>Did Not Use</i>	<i>1-6/yr</i>	<i>1-2/mo</i>	<i>1-7/wk</i>
4th	8888	233	93.6	4.0	1.3	1.2
5th	10762	210	91.9	5.6	1.7	0.8
6th	4957	70	87.5	8.9	2.4	1.2
Total	24607	513	91.6	5.7	1.7	1.0

3.20 - Within the past year how often have you drunk liquor?

<i>Grade Level</i>	<i>N of Valid</i>	<i>N of Miss</i>	<i>Did Not Use</i>	<i>1-6/yr</i>	<i>1-2/mo</i>	<i>1-7/wk</i>
4th	8891	230	97.9	1.3	0.4	0.4
5th	10749	223	97.0	2.0	0.5	0.4
6th	4964	63	94.6	3.8	0.9	0.6
Total	24604	516	96.9	2.1	0.6	0.5

3.21 - Within the past year how often have you smoked marijuana?

<i>Grade Level</i>	<i>N of Valid</i>	<i>N of Miss</i>	<i>Did Not Use</i>	<i>1-6/yr</i>	<i>1-2/mo</i>	<i>1-7/wk</i>
4th	8892	229	99.3	0.4	0.2	0.1
5th	10742	230	99.1	0.5	0.2	0.2
6th	4959	68	98.0	1.2	0.2	0.6
Total	24593	527	99.0	0.6	0.2	0.3

3.22 - Within the past year how often have you sniffed glue, gas, etc.?

<i>Grade Level</i>	<i>N of Valid</i>	<i>N of Miss</i>	<i>Did Not Use</i>	<i>1-6/yr</i>	<i>1-2/mo</i>	<i>1-7/wk</i>
4th	8832	289	96.0	2.1	1.0	0.9
5th	10718	254	96.5	2.0	0.8	0.7
6th	4946	81	95.6	2.8	1.1	0.5
Total	24496	624	96.1	2.2	0.9	0.8

3.23 - Within the past year how often have you used other drugs?

<i>Grade Level</i>	<i>N of Valid</i>	<i>N of Miss</i>	<i>Did Not Use</i>	<i>1-6/yr</i>	<i>1-2/mo</i>	<i>1-7/wk</i>
4th	8852	269	98.9	0.5	0.3	0.3
5th	10693	279	98.8	0.7	0.2	0.3
6th	4953	74	98.5	0.9	0.2	0.4
Total	24498	622	98.8	0.7	0.3	0.3

3.4. How Many Of Your Friends

3.24 - How many of your friends smoked cigarettes?

<i>Grade Level</i>	<i>N of Valid</i>	<i>N of Miss</i>	<i>None</i>	<i>A Few</i>	<i>A Lot</i>
4th	8957	164	84.0	13.5	2.5
5th	10825	147	82.0	15.6	2.4
6th	4977	50	70.0	26.0	4.0
Total	24759	361	80.3	16.9	2.8

3.25 - How many of your friends chewed tobacco, snuff?

<i>Grade Level</i>	<i>N of Valid</i>	<i>N of Miss</i>	<i>None</i>	<i>A Few</i>	<i>A Lot</i>
4th	8900	221	94.4	4.5	1.1
5th	10787	185	94.0	4.9	1.1
6th	4963	64	91.6	7.3	1.1
Total	24650	470	93.6	5.3	1.1

3.26 - How many of your friends drank beer?

<i>Grade Level</i>	<i>N of Valid</i>	<i>N of Miss</i>	<i>None</i>	<i>A Few</i>	<i>A Lot</i>
4th	8887	234	84.1	12.8	3.1
5th	10756	216	84.6	12.7	2.6
6th	4960	67	77.2	19.0	3.8
Total	24603	517	82.9	14.0	3.1

3.27 - How many of your friends drank wine coolers?

<i>Grade Level</i>	<i>N of Valid</i>	<i>N of Miss</i>	<i>None</i>	<i>A Few</i>	<i>A Lot</i>
4th	8853	268	87.7	9.7	2.7
5th	10719	253	86.7	10.9	2.4
6th	4944	83	79.2	17.5	3.4
Total	24516	604	85.5	11.8	2.7

3.28 - How many of your friends drank liquor?

<i>Grade Level</i>	<i>N of Valid</i>	<i>N of Miss</i>	<i>None</i>	<i>A Few</i>	<i>A Lot</i>
4th	8838	283	93.7	4.6	1.7
5th	10720	252	92.5	5.9	1.6
6th	4952	75	87.7	9.9	2.4
Total	24510	610	92.0	6.2	1.8

3.29 - How many of your friends smoked marijuana?

<i>Grade Level</i>	<i>N of Valid</i>	<i>N of Miss</i>	<i>None</i>	<i>A Few</i>	<i>A Lot</i>
4th	8859	262	95.5	3.0	1.5
5th	10730	242	95.2	3.7	1.1
6th	4941	86	90.7	7.4	2.0
Total	24530	590	94.4	4.2	1.4

3.30 - How many of your friends sniffed glue, gas, etc.?

<i>Grade Level</i>	<i>N of Valid</i>	<i>N of Miss</i>	<i>None</i>	<i>A Few</i>	<i>A Lot</i>
4th	8790	331	91.3	6.8	1.9
5th	10697	275	91.6	7.0	1.4
6th	4926	101	88.8	9.7	1.5
Total	24413	707	90.9	7.5	1.6

3.31 - How many of your friends used other drugs?

<i>Grade Level</i>	<i>N of Valid</i>	<i>N of Miss</i>	<i>None</i>	<i>A Few</i>	<i>A Lot</i>
4th	8800	321	94.0	4.0	2.0
5th	10684	288	94.4	4.3	1.4
6th	4927	100	92.0	6.4	1.7
Total	24411	709	93.7	4.6	1.7

3.5. Harmful To Health

3.32 - Do you feel that using cigarettes is harmful to your health?

<i>Grade Level</i>	<i>N of Valid</i>	<i>N of Miss</i>	<i>No</i>	<i>Yes</i>	<i>A Lot</i>
4th	8911	210	14.7	44.5	40.7
5th	10818	154	8.9	45.8	45.3
6th	4969	58	6.0	49.6	44.4
Total	24698	422	10.4	46.1	43.5

3.33 - Do you feel that using chewing tobacco or snuff is harmful to your health?

<i>Grade Level</i>	<i>N of Valid</i>	<i>N of Miss</i>	<i>No</i>	<i>Yes</i>	<i>A Lot</i>
4th	8892	229	16.0	43.0	41.0
5th	10791	181	9.8	43.9	46.3
6th	4959	68	6.6	47.9	45.5
Total	24642	478	11.4	44.4	44.2

3.34 - Do you feel that using beer is harmful to your health?

<i>Grade Level</i>	<i>N of Valid</i>	<i>N of Miss</i>	<i>No</i>	<i>Yes</i>	<i>A Lot</i>
4th	8839	282	19.9	50.5	29.7
5th	10770	202	14.6	54.2	31.2
6th	4954	73	11.1	57.8	31.0
Total	24563	557	15.8	53.6	30.6

3.35 - Do you feel that using wine coolers is harmful to your health?

<i>Grade Level</i>	<i>N of Valid</i>	<i>N of Miss</i>	<i>No</i>	<i>Yes</i>	<i>A Lot</i>
4th	8774	347	21.9	49.2	28.8
5th	10672	300	19.0	51.9	29.1
6th	4932	95	17.4	55.1	27.5
Total	24378	742	19.7	51.6	28.7

3.36 - Do you feel that using liquor is harmful to your health?

<i>Grade Level</i>	<i>N of Valid</i>	<i>N of Miss</i>	<i>No</i>	<i>Yes</i>	<i>A Lot</i>
4th	8761	360	16.2	45.1	38.8
5th	10709	263	11.1	47.5	41.4
6th	4931	96	7.9	52.6	39.5
Total	24401	719	12.3	47.7	40.1

3.37 - Do you feel that using marijuana is harmful to your health?

<i>Grade Level</i>	<i>N of Valid</i>	<i>N of Miss</i>	<i>No</i>	<i>Yes</i>	<i>A Lot</i>
4th	8779	342	14.9	33.5	51.5
5th	10718	254	9.0	30.5	60.5
6th	4935	92	6.4	32.0	61.7
Total	24432	688	10.6	31.9	57.5

3.38 - Do you feel that using glue, gas, etc is harmful to your health?

<i>Grade Level</i>	<i>N of Valid</i>	<i>N of Miss</i>	<i>No</i>	<i>Yes</i>	<i>A Lot</i>
4th	8758	363	16.8	42.7	40.4
5th	10705	267	11.0	39.7	49.4
6th	4928	99	7.7	42.6	49.7
Total	24391	729	12.4	41.4	46.2

3.39 - Do you feel that using cocaine/crack is harmful to your health?

<i>Grade Level</i>	<i>N of Valid</i>	<i>N of Miss</i>	<i>No</i>	<i>Yes</i>	<i>A Lot</i>
4th	8686	435	14.7	32.1	53.2
5th	10707	265	8.7	29.0	62.3
6th	4936	91	5.6	29.4	65.1
Total	24329	791	10.2	30.2	59.6

3.6. Do You Think You Will Ever Use

3.40 - Do you think you will ever smoke cigarettes?

<i>Grade Level</i>	<i>N of Valid</i>	<i>N of Miss</i>	<i>Never</i>	<i>Maybe</i>	<i>Yes, I Will</i>	<i>Already Have</i>
4th	8943	178	86.1	11.2	0.7	2.0
5th	10809	163	84.7	12.0	0.7	2.6
6th	4975	52	78.2	15.5	1.1	5.2
Total	24727	393	83.9	12.4	0.8	2.9

3.41 - Do you think you will ever chew tobacco, snuff?

<i>Grade Level</i>	<i>N of Valid</i>	<i>N of Miss</i>	<i>Never</i>	<i>Maybe</i>	<i>Yes, I Will</i>	<i>Already Have</i>
4th	8883	238	96.0	2.9	0.4	0.7
5th	10767	205	95.8	3.2	0.3	0.7
6th	4955	72	95.2	3.3	0.3	1.3
Total	24605	515	95.7	3.1	0.4	0.8

3.42 - Do you think you will ever drink beer?

<i>Grade Level</i>	<i>N of Valid</i>	<i>N of Miss</i>	<i>Never</i>	<i>Maybe</i>	<i>Yes, I Will</i>	<i>Already Have</i>
4th	8873	248	75.5	18.2	3.0	3.3
5th	10754	218	69.5	23.1	4.2	3.2
6th	4943	84	62.8	27.0	5.5	4.7
Total	24570	550	70.3	22.1	4.0	3.6

3.43 - Do you think you will ever drink wine coolers?

<i>Grade Level</i>	<i>N of Valid</i>	<i>N of Miss</i>	<i>Never</i>	<i>Maybe</i>	<i>Yes, I Will</i>	<i>Already Have</i>
4th	8833	288	77.3	16.5	2.8	3.4
5th	10735	237	68.2	23.3	4.8	3.7
6th	4937	90	60.4	26.7	7.0	5.9
Total	24505	615	69.9	21.5	4.5	4.0

3.44 - Do you think you will ever drink liquor?

<i>Grade Level</i>	<i>N of Valid</i>	<i>N of Miss</i>	<i>Never</i>	<i>Maybe</i>	<i>Yes, I Will</i>	<i>Already Have</i>
4th	8840	281	91.4	6.5	1.1	1.0
5th	10743	229	86.5	10.5	1.6	1.3
6th	4941	86	79.6	14.4	3.2	2.8
Total	24524	596	86.9	9.9	1.8	1.5

3.45 - Do you think you will ever smoke marijuana?

<i>Grade Level</i>	<i>N of Valid</i>	<i>N of Miss</i>	<i>Never</i>	<i>Maybe</i>	<i>Yes, I Will</i>	<i>Already Have</i>
4th	8820	301	97.8	1.6	0.3	0.3
5th	10733	239	97.7	1.5	0.3	0.5
6th	4939	88	95.7	2.4	0.5	1.4
Total	24492	628	97.3	1.7	0.3	0.6

3.46 - Do you think you will ever sniff glue, gas, etc.?

<i>Grade Level</i>	<i>N of Valid</i>	<i>N of Miss</i>	<i>Never</i>	<i>Maybe</i>	<i>Yes, I Will</i>	<i>Already Have</i>
4th	8833	288	94.8	3.0	0.3	1.9
5th	10726	246	96.2	2.3	0.2	1.4
6th	4919	108	95.4	2.4	0.2	2.0
Total	24478	642	95.5	2.6	0.2	1.7

3.47 - Do you think you will ever use cocaine/crack?

<i>Grade Level</i>	<i>N of Valid</i>	<i>N of Miss</i>	<i>Never</i>	<i>Maybe</i>	<i>Yes, I Will</i>	<i>Already Have</i>
4th	8775	346	98.5	1.1	0.2	0.2
5th	10721	251	98.5	1.1	0.2	0.2
6th	4932	95	98.2	1.1	0.2	0.5
Total	24428	692	98.4	1.1	0.2	0.3

3.48 - Do you think you will ever use other drugs?

<i>Grade Level</i>	<i>N of Valid</i>	<i>N of Miss</i>	<i>Never</i>	<i>Maybe</i>	<i>Yes, I Will</i>	<i>Already Have</i>
4th	8776	345	95.8	3.4	0.3	0.6
5th	10680	292	96.7	2.5	0.3	0.5
6th	4926	101	96.2	2.6	0.3	0.9
Total	24382	738	96.3	2.8	0.3	0.6

3.7. How Easy Is It For Kids Your Age To Get

3.49 - How easy is it to get cigarettes?

<i>Grade Level</i>	<i>N of Valid</i>	<i>N of Miss</i>	<i>Cannot Get</i>	<i>Hard To Get</i>	<i>Easy To Get</i>
4th	8833	288	61.0	19.8	19.2
5th	10697	275	49.0	24.3	26.6
6th	4892	135	33.1	26.3	40.6
Total	24422	698	50.2	23.1	26.8

3.50 - How easy is it to get chewing tobacco, snuff?

<i>Grade Level</i>	<i>N of Valid</i>	<i>N of Miss</i>	<i>Cannot Get</i>	<i>Hard To Get</i>	<i>Easy To Get</i>
4th	8799	322	67.3	21.2	11.5
5th	10644	328	58.5	27.2	14.3
6th	4880	147	46.1	34.1	19.7
Total	24323	797	59.2	26.4	14.4

3.51 - How easy is it to get beer?

<i>Grade Level</i>	<i>N of Valid</i>	<i>N of Miss</i>	<i>Cannot Get</i>	<i>Hard To Get</i>	<i>Easy To Get</i>
4th	8792	329	59.0	19.8	21.3
5th	10643	329	46.5	24.2	29.3
6th	4882	145	34.3	26.2	39.5
Total	24317	803	48.5	23.0	28.4

3.52 - How easy is it to get wine coolers?

<i>Grade Level</i>	<i>N of Valid</i>	<i>N of Miss</i>	<i>Cannot Get</i>	<i>Hard To Get</i>	<i>Easy To Get</i>
4th	8765	356	61.9	20.5	17.5
5th	10581	391	49.5	26.2	24.3
6th	4868	159	37.6	28.6	33.8
Total	24214	906	51.6	24.6	23.8

3.53 - How easy is it to get liquor?

<i>Grade Level</i>	<i>N of Valid</i>	<i>N of Miss</i>	<i>Cannot Get</i>	<i>Hard To Get</i>	<i>Easy To Get</i>
4th	8747	374	68.3	19.9	11.8
5th	10603	369	56.8	25.8	17.5
6th	4880	147	44.8	30.2	25.0
Total	24230	890	58.5	24.5	16.9

3.54 - How easy is it to get marijuana?

<i>Grade Level</i>	<i>N of Valid</i>	<i>N of Miss</i>	<i>Cannot Get</i>	<i>Hard To Get</i>	<i>Easy To Get</i>
4th	8699	422	71.9	18.1	10.0
5th	10583	389	65.5	22.1	12.4
6th	4871	156	55.2	27.4	17.4
Total	24153	967	65.7	21.7	12.5

3.8. While At School Have You

3.55 - While at school have you smoked cigarettes?

<i>Grade Level</i>	<i>N of Valid</i>	<i>N of Miss</i>	<i>No</i>	<i>One Time</i>	<i>Two or More</i>
4th	8927	194	98.9	0.7	0.4
5th	10795	177	99.0	0.7	0.3
6th	4972	55	98.2	1.1	0.7
Total	24694	426	98.8	0.8	0.4

3.56 - While at school have you drunk beer, wine coolers or liquor?

<i>Grade Level</i>	<i>N of Valid</i>	<i>N of Miss</i>	<i>No</i>	<i>One Time</i>	<i>Two or More</i>
4th	8908	213	98.2	1.3	0.5
5th	10774	198	98.4	1.1	0.5
6th	4957	70	98.4	1.1	0.5
Total	24639	481	98.3	1.1	0.5

3.57 - While at school have you smoked marijuana?

<i>Grade Level</i>	<i>N of Valid</i>	<i>N of Miss</i>	<i>No</i>	<i>One Time</i>	<i>Two or More</i>
4th	8888	233	99.7	0.2	0.2
5th	10771	201	99.5	0.3	0.2
6th	4959	68	99.3	0.4	0.3
Total	24618	502	99.5	0.3	0.2

3.58 - While at school have you sniffed glue, gas, etc.?

<i>Grade Level</i>	<i>N of Valid</i>	<i>N of Miss</i>	<i>No</i>	<i>One Time</i>	<i>Two or More</i>
4th	8861	260	95.8	2.9	1.3
5th	10744	228	96.3	2.6	1.1
6th	4947	80	95.1	3.6	1.3
Total	24552	568	95.9	2.9	1.2

3.59 - While at school have you been afraid a student will hurt you?

<i>Grade Level</i>	<i>N of Valid</i>	<i>N of Miss</i>	<i>No</i>	<i>One Time</i>	<i>Two or More</i>
4th	8858	263	74.8	14.9	10.3
5th	10732	240	76.3	15.0	8.7
6th	4949	78	75.2	15.6	9.2
Total	24539	581	75.5	15.1	9.4

3.60 - While at school have you been threatened by a student?

<i>Grade Level</i>	<i>N of Valid</i>	<i>N of Miss</i>	<i>No</i>	<i>One Time</i>	<i>Two or More</i>
4th	8851	270	67.0	16.8	16.1
5th	10744	228	68.1	17.4	14.5
6th	4952	75	63.3	19.5	17.2
Total	24547	573	66.7	17.6	15.6

3.61 - While at school have you been hurt by a student?

<i>Grade Level</i>	<i>N of Valid</i>	<i>N of Miss</i>	<i>No</i>	<i>One Time</i>	<i>Two or More</i>
4th	8859	262	73.2	15.2	11.5
5th	10734	238	77.2	13.4	9.3
6th	4949	78	78.5	13.2	8.3
Total	24542	578	76.0	14.0	9.9

3.62 - While at school have you been hurt by an adult?

<i>Grade Level</i>	<i>N of Valid</i>	<i>N of Miss</i>	<i>No</i>	<i>One Time</i>	<i>Two or More</i>
4th	8828	293	92.1	4.0	3.8
5th	10739	233	93.7	3.7	2.6
6th	4950	77	94.3	3.1	2.6
Total	24517	603	93.2	3.7	3.1

3.9. While *Not At School* Have You**3.63 - While *not at school* have you smoked cigarettes?**

<i>Grade Level</i>	<i>N of Valid</i>	<i>N of Miss</i>	<i>No</i>	<i>One Time</i>	<i>Two or More</i>
4th	8929	192	94.9	3.4	1.7
5th	10813	159	92.9	4.6	2.5
6th	4972	55	86.7	7.4	5.9
Total	24714	406	92.4	4.7	2.9

3.64 - While *not at school* have you drunk beer, wine coolers or liquor?

<i>Grade Level</i>	<i>N of Valid</i>	<i>N of Miss</i>	<i>No</i>	<i>One Time</i>	<i>Two or More</i>
4th	8901	220	89.5	7.2	3.2
5th	10789	183	87.1	8.5	4.4
6th	4963	64	81.0	11.0	8.1
Total	24653	467	86.8	8.5	4.7

3.65 - While *not at school* have you smoked marijuana?

<i>Grade Level</i>	<i>N of Valid</i>	<i>N of Miss</i>	<i>No</i>	<i>One Time</i>	<i>Two or More</i>
4th	8875	246	99.3	0.3	0.4
5th	10795	177	98.9	0.5	0.6
6th	4961	66	97.6	1.1	1.3
Total	24631	489	98.8	0.6	0.7

3.66 - While *not at school* have you sniffed glue, gas, etc.?

<i>Grade Level</i>	<i>N of Valid</i>	<i>N of Miss</i>	<i>No</i>	<i>One Time</i>	<i>Two or More</i>
4th	8838	283	96.2	2.4	1.4
5th	10776	196	96.8	1.8	1.3
6th	4960	67	96.2	2.2	1.6
Total	24574	546	96.5	2.1	1.4

3.67 - While *not at school* have you been afraid a student will hurt you?

<i>Grade Level</i>	<i>N of Valid</i>	<i>N of Miss</i>	<i>No</i>	<i>One Time</i>	<i>Two or More</i>
4th	8866	255	82.0	10.0	8.0
5th	10780	192	84.3	9.5	6.1
6th	4961	66	83.9	9.8	6.3
Total	24607	513	83.4	9.8	6.8

3.68 - While *not* at school have you been threatened by a student?

<i>Grade Level</i>	<i>N of Valid</i>	<i>N of Miss</i>	<i>No</i>	<i>One Time</i>	<i>Two or More</i>
4th	8863	258	76.9	11.9	11.2
5th	10770	202	79.5	11.0	9.5
6th	4954	73	76.7	12.6	10.8
Total	24587	533	78.0	11.6	10.4

3.69 - While *not* at school have you been hurt by a student?

<i>Grade Level</i>	<i>N of Valid</i>	<i>N of Miss</i>	<i>No</i>	<i>One Time</i>	<i>Two or More</i>
4th	8856	265	80.8	10.3	9.0
5th	10753	219	83.9	8.9	7.2
6th	4962	65	84.8	8.4	6.8
Total	24571	549	83.0	9.3	7.7

3.70 - While *not* at school have you been hurt by an adult?

<i>Grade Level</i>	<i>N of Valid</i>	<i>N of Miss</i>	<i>No</i>	<i>One Time</i>	<i>Two or More</i>
4th	8832	289	86.3	5.9	7.9
5th	10734	238	88.9	5.4	5.6
6th	4951	76	89.9	4.9	5.2
Total	24517	603	88.2	5.5	6.4

3.10. Is It OK For Kids My Age To

3.71 - Is it OK for kids my age to smoke cigarettes?

<i>Grade Level</i>	<i>N of Valid</i>	<i>N of Miss</i>	<i>No</i>	<i>Yes</i>
4th	8955	166	98.5	1.5
5th	10858	114	98.2	1.8
6th	4986	41	97.0	3.0
Total	24799	321	98.1	1.9

3.72 - Is it OK for kids my age to drink beer?

<i>Grade Level</i>	<i>N of Valid</i>	<i>N of Miss</i>	<i>No</i>	<i>Yes</i>
4th	8953	168	96.2	3.8
5th	10829	143	96.6	3.4
6th	4972	55	96.2	3.8
Total	24754	366	96.4	3.6

3.73 - Is it OK for kids my age to drink wine coolers?

<i>Grade Level</i>	<i>N of Valid</i>	<i>N of Miss</i>	<i>No</i>	<i>Yes</i>
4th	8930	191	94.6	5.4
5th	10820	152	93.8	6.2
6th	4964	63	92.3	7.7
Total	24714	406	93.8	6.2

3.74 - Is it OK for kids my age to drink liquor?

<i>Grade Level</i>	<i>N of Valid</i>	<i>N of Miss</i>	<i>No</i>	<i>Yes</i>
4th	8930	191	98.6	1.4
5th	10825	147	98.3	1.7
6th	4978	49	97.5	2.5
Total	24733	387	98.2	1.8

3.75 - Is it OK for kids my age to smoke marijuana?

<i>Grade Level</i>	<i>N of Valid</i>	<i>N of Miss</i>	<i>No</i>	<i>Yes</i>
4th	8926	195	99.0	1.0
5th	10825	147	98.9	1.1
6th	4975	52	98.3	1.7
Total	24726	394	98.8	1.2

3.76 - Is it OK for kids my age to steal something if you need it?

<i>Grade Level</i>	<i>N of Valid</i>	<i>N of Miss</i>	<i>No</i>	<i>Yes</i>
4th	8920	201	97.2	2.8
5th	10825	147	96.8	3.2
6th	4963	64	95.1	4.9
Total	24708	412	96.6	3.4

3.77 - Is it OK for kids my age to sell drugs if you need the money?

<i>Grade Level</i>	<i>N of Valid</i>	<i>N of Miss</i>	<i>No</i>	<i>Yes</i>
4th	8937	184	98.0	2.0
5th	10824	148	98.1	1.9
6th	4967	60	97.5	2.5
Total	24728	392	97.9	2.1

3.78 - Is it OK for kids my age to carry a gun for protection?

<i>Grade Level</i>	<i>N of Valid</i>	<i>N of Miss</i>	<i>No</i>	<i>Yes</i>
4th	8903	218	95.6	4.4
5th	10772	200	95.4	4.6
6th	4953	74	93.9	6.1
Total	24628	492	95.2	4.8

3.79 - Is it OK for kids my age to take what you want, even if it means hurting someone?

<i>Grade Level</i>	<i>N of Valid</i>	<i>N of Miss</i>	<i>No</i>	<i>Yes</i>
4th	8926	195	98.0	2.0
5th	10807	165	97.9	2.1
6th	4967	60	97.3	2.7
Total	24700	420	97.8	2.2

3.80 - Is it OK for kids my age to beat up another student if it is a fair fight?

<i>Grade Level</i>	<i>N of Valid</i>	<i>N of Miss</i>	<i>No</i>	<i>Yes</i>
4th	8900	221	85.4	14.6
5th	10780	192	85.4	14.6
6th	4952	75	81.3	18.7
Total	24632	488	84.6	15.4

3.11. Frequency of Use

3.81 - Frequency of Use -- Cigarettes

<i>Grade Level</i>	<i>N of Valid</i>	<i>N of Miss</i>	<i>Weekly Use</i>	<i>Monthly Use</i>	<i>Annual Use</i>
4th	8999	122	0.6	1.2	2.5
5th	10856	116	0.7	1.6	3.7
6th	4992	35	1.5	3.5	8.3
Total	24847	273	0.9	1.9	4.2

3.82 - Frequency of Use -- Chewing Tobacco, Snuff

<i>Grade Level</i>	<i>N of Valid</i>	<i>N of Miss</i>	<i>Weekly Use</i>	<i>Monthly Use</i>	<i>Annual Use</i>
4th	8987	134	0.3	0.5	1.1
5th	10814	158	0.3	0.7	1.5
6th	4981	46	0.3	0.7	1.5
Total	24782	338	0.3	0.6	1.3

3.83 - Frequency of Use -- Beer

<i>Grade Level</i>	<i>N of Valid</i>	<i>N of Miss</i>	<i>Weekly Use</i>	<i>Monthly Use</i>	<i>Annual Use</i>
4th	8948	173	0.8	2.2	6.1
5th	10781	191	0.9	2.3	6.7
6th	4964	63	0.9	2.8	10.2
Total	24693	427	0.9	2.4	7.2

3.84 - Frequency of Use -- Wine Coolers

<i>Grade Level</i>	<i>N of Valid</i>	<i>N of Miss</i>	<i>Weekly Use</i>	<i>Monthly Use</i>	<i>Annual Use</i>
4th	8888	233	1.2	2.4	6.4
5th	10762	210	0.8	2.5	8.1
6th	4957	70	1.2	3.6	12.5
Total	24607	513	1.0	2.7	8.4

3.85 - Frequency of Use -- Liquor

<i>Grade Level</i>	<i>N of Valid</i>	<i>N of Miss</i>	<i>Weekly Use</i>	<i>Monthly Use</i>	<i>Annual Use</i>
4th	8891	230	0.4	0.8	2.1
5th	10749	223	0.4	0.9	3.0
6th	4964	63	0.6	1.6	5.4
Total	24604	516	0.5	1.0	3.1

3.86 - Frequency of Use -- Marijuana

<i>Grade Level</i>	<i>N of Valid</i>	<i>N of Miss</i>	<i>Weekly Use</i>	<i>Monthly Use</i>	<i>Annual Use</i>
4th	8892	229	0.1	0.3	0.7
5th	10742	230	0.2	0.4	0.9
6th	4959	68	0.6	0.8	2.0
Total	24593	527	0.3	0.5	1.0

3.87 - Frequency of Use -- Glue, Gas, etc.

<i>Grade Level</i>	<i>N of Valid</i>	<i>N of Miss</i>	<i>Weekly Use</i>	<i>Monthly Use</i>	<i>Annual Use</i>
4th	8832	289	0.9	1.9	4.0
5th	10718	254	0.7	1.5	3.5
6th	4946	81	0.5	1.6	4.4
Total	24496	624	0.8	1.7	3.9

3.88 - Frequency of Use -- Other Drugs

<i>Grade Level</i>	<i>N of Valid</i>	<i>N of Miss</i>	<i>Weekly Use</i>	<i>Monthly Use</i>	<i>Annual Use</i>
4th	8852	269	0.3	0.6	1.1
5th	10693	279	0.3	0.5	1.2
6th	4953	74	0.4	0.6	1.5
Total	24498	622	0.3	0.6	1.2

TABLE OF CONTENTS

1 INTRODUCTION	1
1.1 Tobacco Use	2
1.2 Alcohol Use	2
1.3 Marijuana Use	2
1.4 Inhalant Use	2
1.5 What You Can Do As A Parent, Teacher, Or Concerned Citizen?	3
2 STANDARD GRAPHICS	4
2.1 Frequency Of Use	5
2.2 Harmful To Health	6
2.3 How Easy Is It For Kids Your Age To Get	7
2.4 How Many Of Your Friends	8
3 PERCENTAGE TABLES	10
3.1 Personal & Family Information	11
3.2 Student Characteristics	12
3.3 Within The Past Year How Often Have You Used	15
3.4 How Many Of Your Friends	17
3.5 Harmful To Health	19
3.6 Do You Think You Will Ever Use	21
3.7 How Easy Is It For Kids Your Age To Get	23
3.8 While At School Have You	25
3.9 While <i>Not</i> At School Have You	27
3.10 Is It OK For Kids My Age To	29
3.11 Frequency of Use	31

LIST OF TABLES

3.1 - Sex	11
3.2 - Ethnic Origin	11
3.3 - Age	11
3.4 - I make good grades.	12
3.5 - I get into trouble at school.	12
3.6 - I go to church or synagogue.	12
3.7 - I talk to my parents about my problems.	12
3.8 - My parents talk to me about the dangers of using drugs.	12
3.9 - My teachers talk to me about the dangers of using drugs.	13
3.10 - My parents make me follow certain rules.	13
3.11 - I have to be home at a certain time.	13
3.12 - I go to parties.	13
3.13 - I am alone at home.	13
3.14 - The kids at school like me.	14
3.15 - I feel lonely.	14
3.16 - Within the past year how often have you smoked cigarettes?	15
3.17 - Within the past year how often have you chewed tobacco, snuff?	15
3.18 - Within the past year how often have you drunk beer?	15
3.19 - Within the past year how often have you drunk wine coolers?	15
3.20 - Within the past year how often have you drunk liquor?	15
3.21 - Within the past year how often have you smoked marijuana?	16
3.22 - Within the past year how often have you sniffed glue, gas, etc.?	16
3.23 - Within the past year how often have you used other drugs?	16
3.24 - How many of your friends smoked cigarettes?	17
3.25 - How many of your friends chewed tobacco, snuff?	17
3.26 - How many of your friends drank beer?	17
3.27 - How many of your friends drank wine coolers?	17
3.28 - How many of your friends drank liquor?	17
3.29 - How many of your friends smoked marijuana?	18
3.30 - How many of your friends sniffed glue, gas, etc.?	18
3.31 - How many of your friends used other drugs?	18
3.32 - Do you feel that using cigarettes is harmful to your health?	19
3.33 - Do you feel that using chewing tobacco or snuff is harmful to your health?	19
3.34 - Do you feel that using beer is harmful to your health?	19
3.35 - Do you feel that using wine coolers is harmful to your health?	19
3.36 - Do you feel that using liquor is harmful to your health?	19
3.37 - Do you feel that using marijuana is harmful to your health?	20
3.38 - Do you feel that using glue, gas, etc is harmful to your health?	20
3.39 - Do you feel that using cocaine/crack is harmful to your health?	20
3.40 - Do you think you will ever smoke cigarettes?	21

3.41 - Do you think you will ever chew tobacco, snuff?	21
3.42 - Do you think you will ever drink beer?	21
3.43 - Do you think you will ever drink wine coolers?	21
3.44 - Do you think you will ever drink liquor?	21
3.45 - Do you think you will ever smoke marijuana?	22
3.46 - Do you think you will ever sniff glue, gas, etc.?	22
3.47 - Do you think you will ever use cocaine/crack?	22
3.48 - Do you think you will ever use other drugs?	22
3.49 - How easy is it to get cigarettes?	23
3.50 - How easy is it to get chewing tobacco, snuff?	23
3.51 - How easy is it to get beer?	23
3.52 - How easy is it to get wine coolers?	23
3.53 - How easy is it to get liquor?	23
3.54 - How easy is it to get marijuana?	24
3.55 - While <i>at</i> school have you smoked cigarettes?	25
3.56 - While <i>at</i> school have you drunk beer, wine coolers or liquor?	25
3.57 - While <i>at</i> school have you smoked marijuana?	25
3.58 - While <i>at</i> school have you sniffed glue, gas, etc.?	25
3.59 - While <i>at</i> school have you been afraid a student will hurt you?	25
3.60 - While <i>at</i> school have you been threatened by a student?	26
3.61 - While <i>at</i> school have you been hurt by a student?	26
3.62 - While <i>at</i> school have you been hurt by an adult?	26
3.63 - While <i>not</i> at school have you smoked cigarettes?	27
3.64 - While <i>not</i> at school have you drunk beer, wine coolers or liquor?	27
3.65 - While <i>not</i> at school have you smoked marijuana?	27
3.66 - While <i>not</i> at school have you sniffed glue, gas, etc.?	27
3.67 - While <i>not</i> at school have you been afraid a student will hurt you?	27
3.68 - While <i>not</i> at school have you been threatened by a student?	28
3.69 - While <i>not</i> at school have you been hurt by a student?	28
3.70 - While <i>not</i> at school have you been hurt by an adult?	28
3.71 - Is it OK for kids my age to smoke cigarettes?	29
3.72 - Is it OK for kids my age to drink beer?	29
3.73 - Is it OK for kids my age to drink wine coolers?	29
3.74 - Is it OK for kids my age to drink liquor?	29
3.75 - Is it OK for kids my age to smoke marijuana?	29
3.76 - Is it OK for kids my age to steal something if you need it?	30
3.77 - Is it OK for kids my age to sell drugs if you need the money?	30
3.78 - Is it OK for kids my age to carry a gun for protection?	30
3.79 - Is it OK for kids my age to take what you want, even if it means hurting some- one?	30
3.80 - Is it OK for kids my age to beat up another student if it is a fair fight?	30
3.81 - Frequency of Use -- Cigarettes	31
3.82 - Frequency of Use -- Chewing Tobacco, Snuff	31
3.83 - Frequency of Use -- Beer	31
3.84 - Frequency of Use -- Wine Coolers	31
3.85 - Frequency of Use -- Liquor	31

List of Tables

3.86 - Frequency of Use -- Marijuana	32
3.87 - Frequency of Use -- Glue, Gas, etc.	32
3.88 - Frequency of Use -- Other Drugs	32

LIST OF FIGURES

2.1 - % Students Who Use Gateway Drugs	5
2.2 - % Students Who Use Illicit Drugs	5
2.3 - Harmful to Health -- Cigarettes, Tobacco, Beer, Wine Coolers	6
2.4 - Harmful to Health -- Liquor, Marijuana, Glue, Gas, Cocaine/Crack	6
2.5 - How Easy Is It For Kids Your Age To Get Cigarettes, Tobacco, Beer	7
2.6 - How Easy Is It For Kids Your Age To Get Wine Coolers, Liquor, Marijuana	7
2.7 - How Many Of Your Friends Used Cigarettes, Chewing Tobacco, Beer	8
2.8 - How Many Of Your Friends Used Wine Coolers, Liquor, Marijuana	8
2.9 - How Many Of Your Friends Used Glue, Gas, Other Drugs	8