

***PRIDE
QUESTIONNAIRE
REPORT***

2001-02 National Summary
Grades 4 through 6

UE010001-154

Mon Aug 19 11:29:04 CDT 2002



CHAPTER 1

INTRODUCTION

The following summary, graphs, and tables are compiled from data collected in your school(s) using the PRIDE Questionnaire. These data reflect prevalence and patterns of local drug and alcohol use. It is important that this report be utilized as part of your drug abuse awareness and prevention program. We strongly suggest that you

COPY THE FOLLOWING PAGES

and

DISTRIBUTE THEM TO YOUR FACULTY.

The pages highlight and graphically summarize drug use by students in your school.

- Number of 4th grade students surveyed: 6445
- Number of 5th grade students surveyed: 11003
- Number of 6th grade students surveyed: 5059
- Number of students surveyed: 22507

1.1. Tobacco Use

2.1 percent of your 4th grade students said they smoked cigarettes within the past year (2000-01 PRIDE National Avg. = 2.5%). **2.4** percent of your 5th grade students said they smoked cigarettes within the past year (2000-01 PRIDE National Avg. = 3.7%). **7.2** percent of your 6th grade students said they smoked cigarettes within the past year (2000-01 PRIDE National Avg. = 8.3%).

1.0 percent of your 4th grade students said they used chewing tobacco or snuff within the past year (2000-01 PRIDE National Avg. = 1.1%). **1.1** percent of your 5th grade students said they used chewing tobacco or snuff within the past year (2000-01 PRIDE National Avg. = 1.5%). **2.1** percent of your 6th grade students said they used chewing tobacco or snuff within the past year (2000-01 PRIDE National Avg. = 1.5%).

1.2. Alcohol Use

5.0 percent of your 4th grade students said they drank beer within the past year (2000-01 PRIDE National Avg. = 6.1%). **4.9** percent of your 5th grade students said they drank beer within the past year (2000-01 PRIDE National Avg. = 6.7%). **11.0** percent of your 6th grade students said they drank beer within the past year (2000-01 PRIDE National Avg. = 10.2%).

4.3 percent of your 4th grade students said they drank wine coolers within the past year (2000-01 PRIDE National Avg. = 6.4%). **5.8** percent of your 5th grade students said they drank wine coolers within the past year (2000-01 PRIDE National Avg. = 8.1%). **14.9** percent of your 6th grade students said they drank wine coolers within the past year (2000-01 PRIDE National Avg. = 12.5%).

1.5 percent of your 4th grade students said they drank liquor within the past year (2000-01 PRIDE National Avg. = 2.1%). **2.5** percent of your 5th grade students said they drank liquor within the past year (2000-01 PRIDE National Avg. = 3.0%). **6.4** percent of your 6th grade students said they drank liquor within the past year (2000-01 PRIDE National Avg. = 5.4%).

NOTE: Beer and wine coolers are the favorite intoxicants of American students.

1.3. Marijuana Use

2.1 percent of your 6th grade students said they smoked marijuana within the past year (2000-01 PRIDE National Avg. = 2.0%).

1.4. Inhalant Use

2.7 percent of your 4th grade students said they sniffed glue, gas, etc. within the past year (2000-01 PRIDE National Avg. = 4.0%). **2.5** percent of your 5th grade students said they sniffed

Local percentages below 1% are not reported.

glue, gas, etc. within the past year (2000-01 PRIDE National Avg. = 3.5%). **3.3** percent of your 6th grade students said they sniffed glue, gas, etc. within the past year (2000-01 PRIDE National Avg. = 4.4%).

1.5. What You Can Do As A Parent, Teacher, Or Concerned Citizen?

The drug merchandisers thrive on the ignorance, apathy, and irresponsibility of ordinary citizens.

YOU CAN MAKE A DIFFERENCE!

Here's how:

- (1) Educate yourself and your family about the health hazards of drugs.
- (2) Insist on no illegal drug use by youngsters. This includes alcohol, tobacco and marijuana.
- (3) Support drug education in the schools, workplace, churches and civic associations.
- (4) Rebuild understanding and respect for the laws concerning alcohol, marijuana, cocaine and other drugs.
- (5) Recognize the danger of the illegal consumer as well as the illegal supplier of alcohol and other drugs.
- (6) Support law-enforcement efforts at home and abroad.
- (7) Write letters, telephone and visit those members of the publishing, merchandising and media world who glamorize, trivialize or subsidize the drug culture.

CHAPTER 2

STANDARD GRAPHICS

The following graphs will assist you in understanding the relationship of student behavior to alcohol and other drug usage. You are encouraged to make overheads or slides from the graphs for presentations to school faculty, parents, media, and other audiences in the community.

The *Frequency of Use* graphs show the percent of students at each grade level who report any use of the various drugs. The graphs are divided into *Gateway* and *Illicit* drug categories.

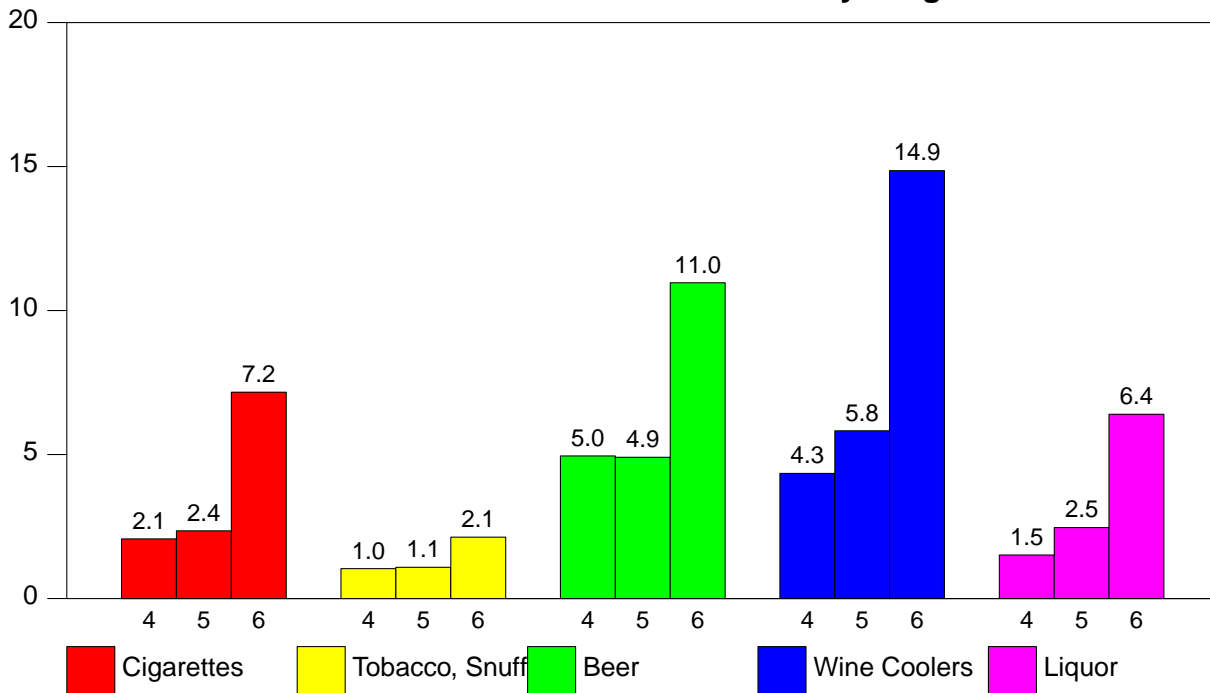
The *Perceived Harm* of alcohol and other drugs will assist with understanding how the false assumptions concerning harm are related to drug use. When drugs are perceived as harmless, the probability of use increases. These graphs show the percent of students who marked *Yes* or *A Lot* on the question *Do You Think The Following Are Harmful To Your Health*.

Research indicates that easy access, *Availability*, to drug increases the probability of use. Availability of alcohol and other drugs normally increases at higher grade levels. These graphs show the percent of students who marked *Easy To Get* on the question *How Easy Is It For Kids Your Age To Get*.

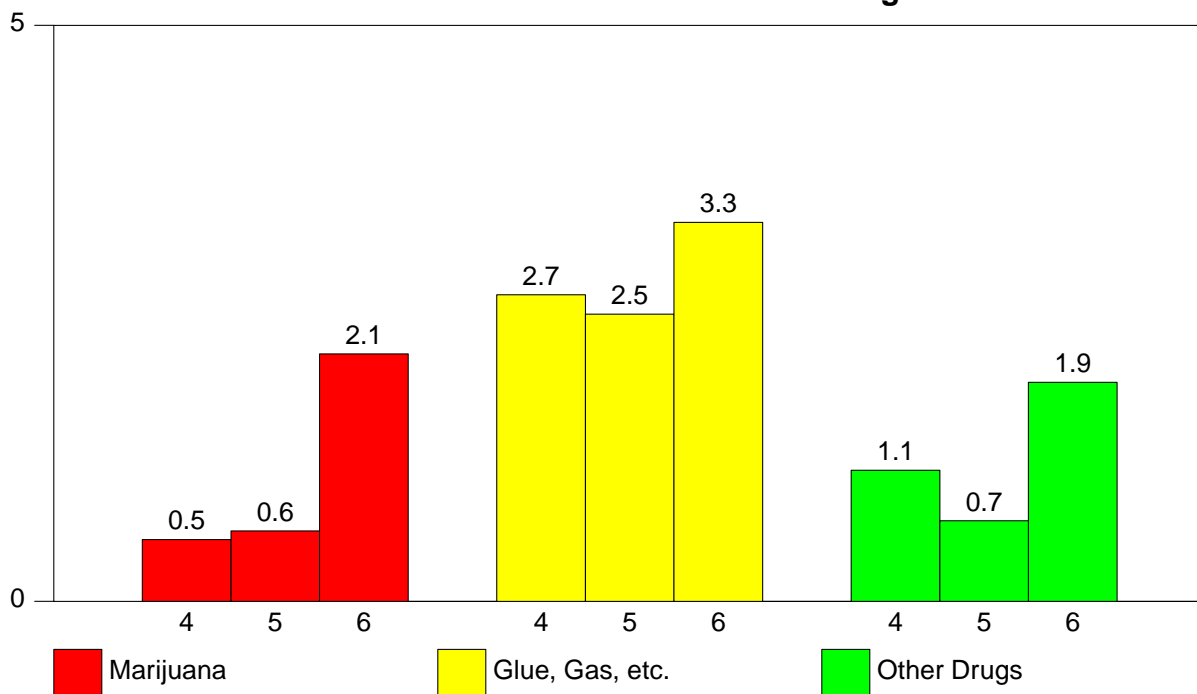
Data collected in past years using the **PRIDE Surveys Questionnaire** indicate a high correlation between friends use of drugs and an individual students use of drugs (i.e. a student who reports use of drugs by friends is more likely to use drugs). These graphs show the percent of students who marked *A Lot* on the question *How Many Of Your Friends Use*.

2.1. Frequency Of Use

2.1 - % Students Who Use Gateway Drugs

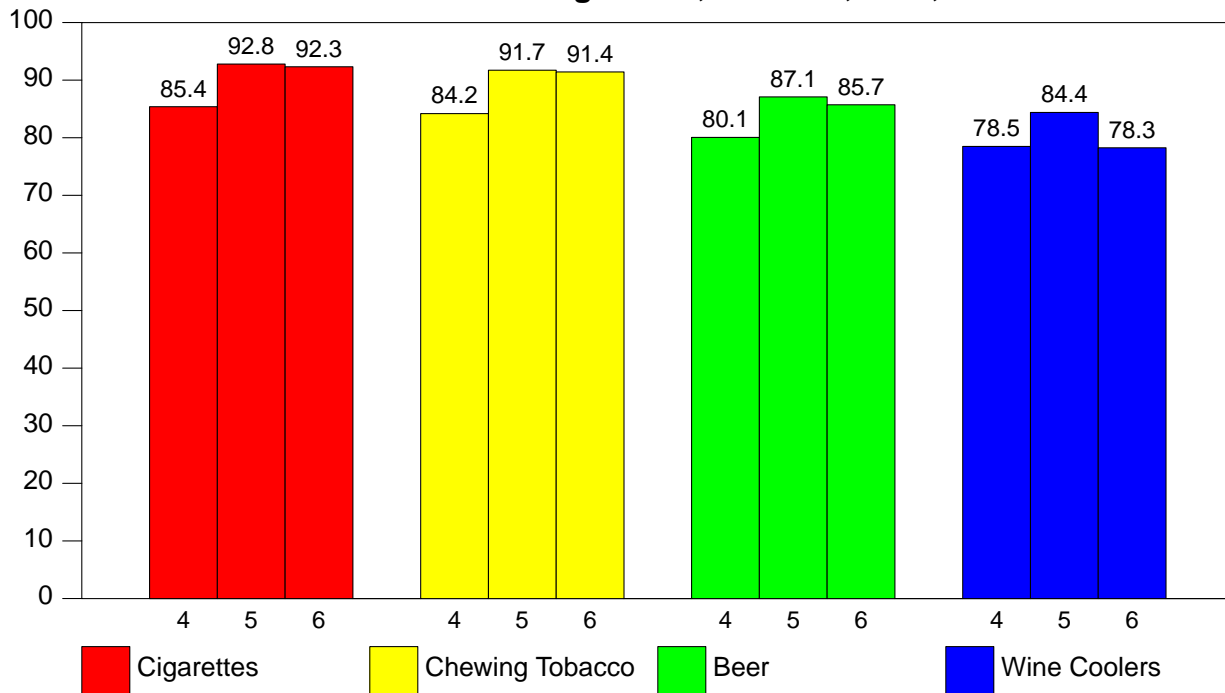


2.2 - % Students Who Use Illicit Drugs

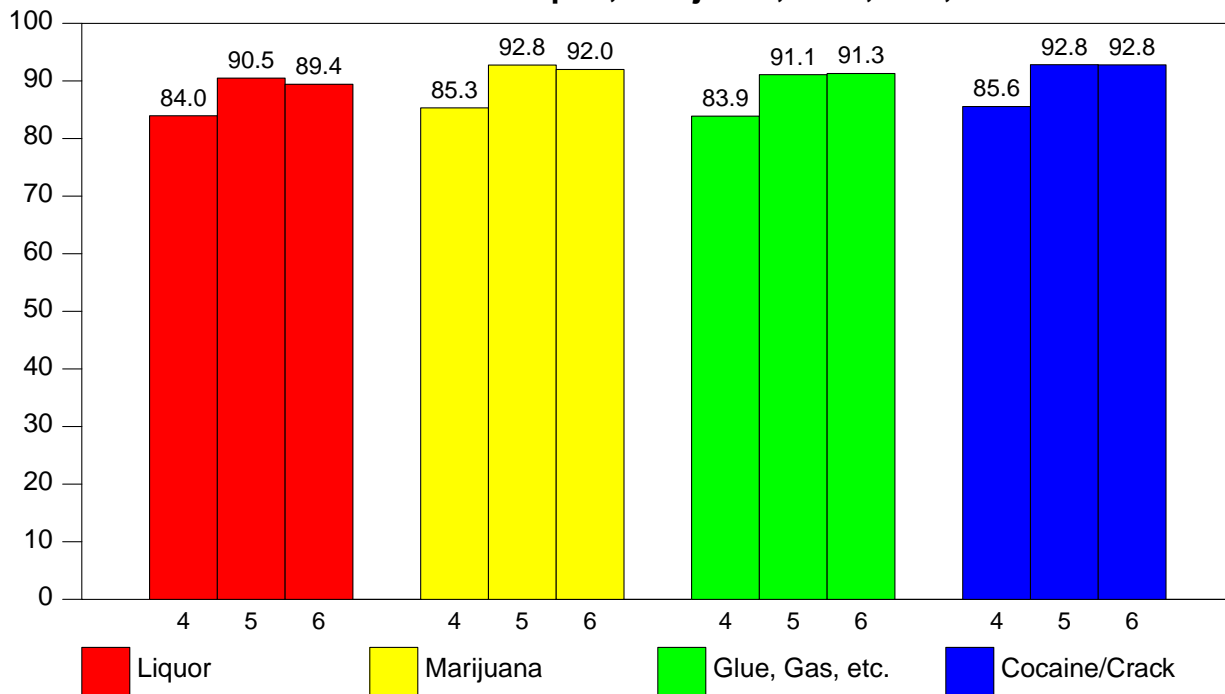


2.2. Harmful To Health

2.3 - Harmful to Health -- Cigarettes, Tobacco, Beer, Wine Coolers

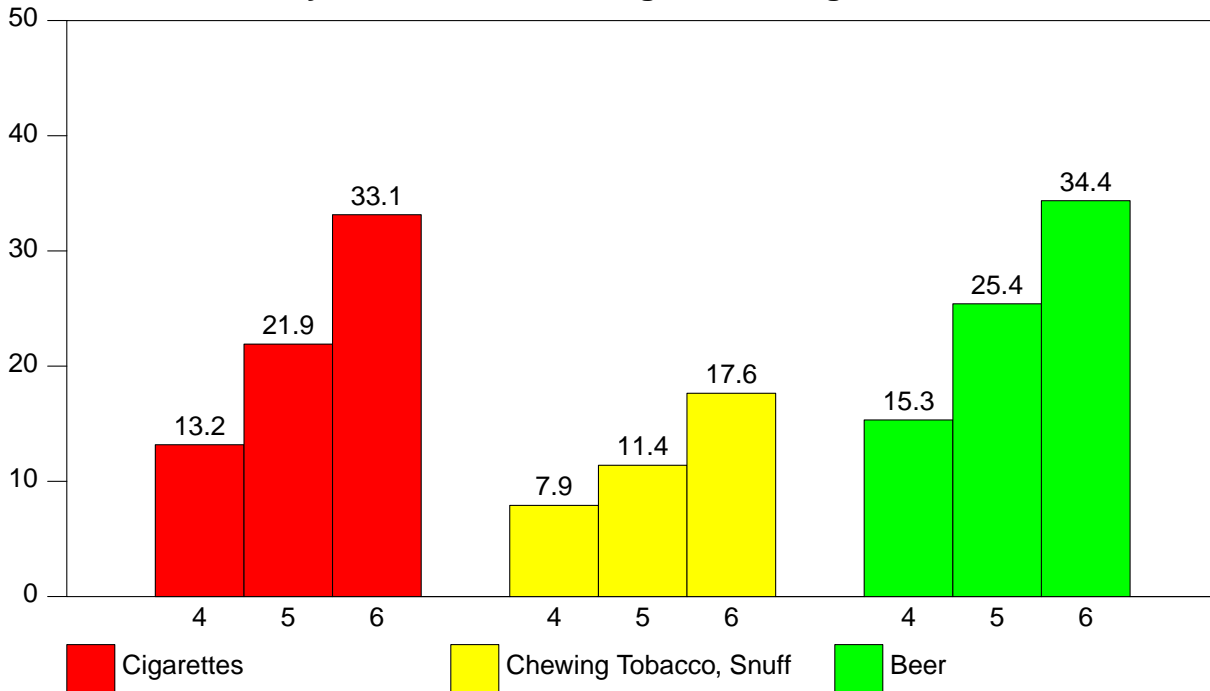


2.4 - Harmful to Health -- Liquor, Marijuana, Glue, Gas, Cocaine/Crack

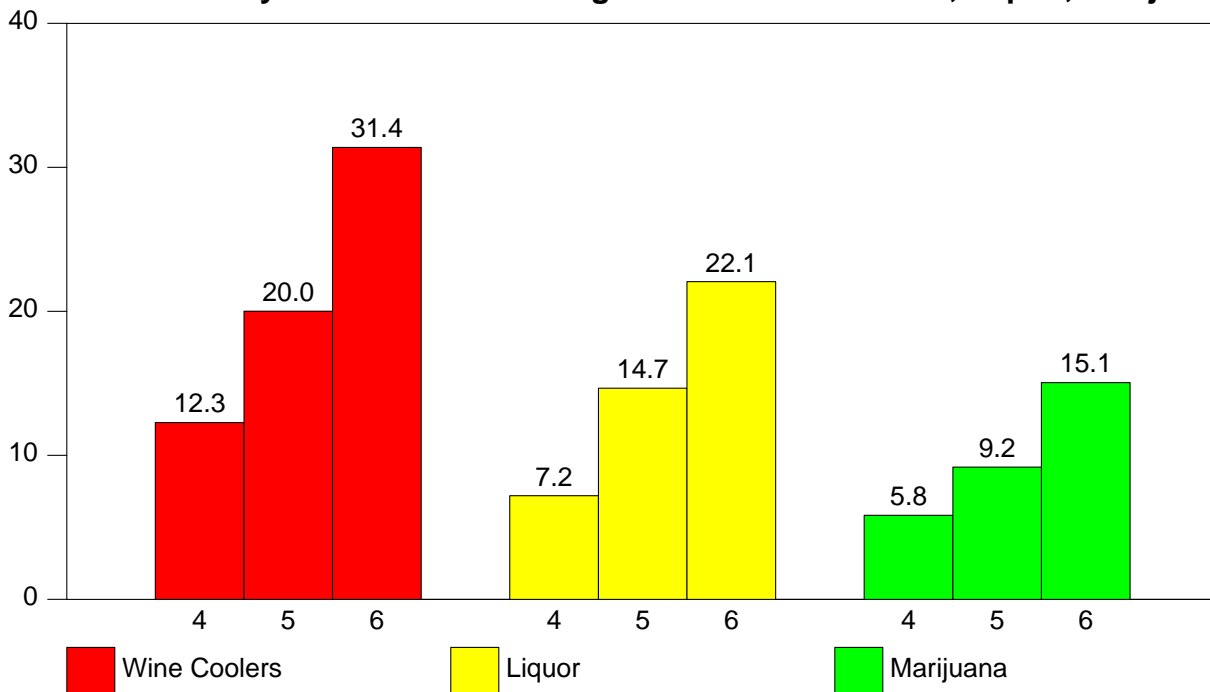


2.3. How Easy Is It For Kids Your Age To Get

2.5 - How Easy Is It For Kids Your Age To Get Cigarettes, Tobacco, Beer

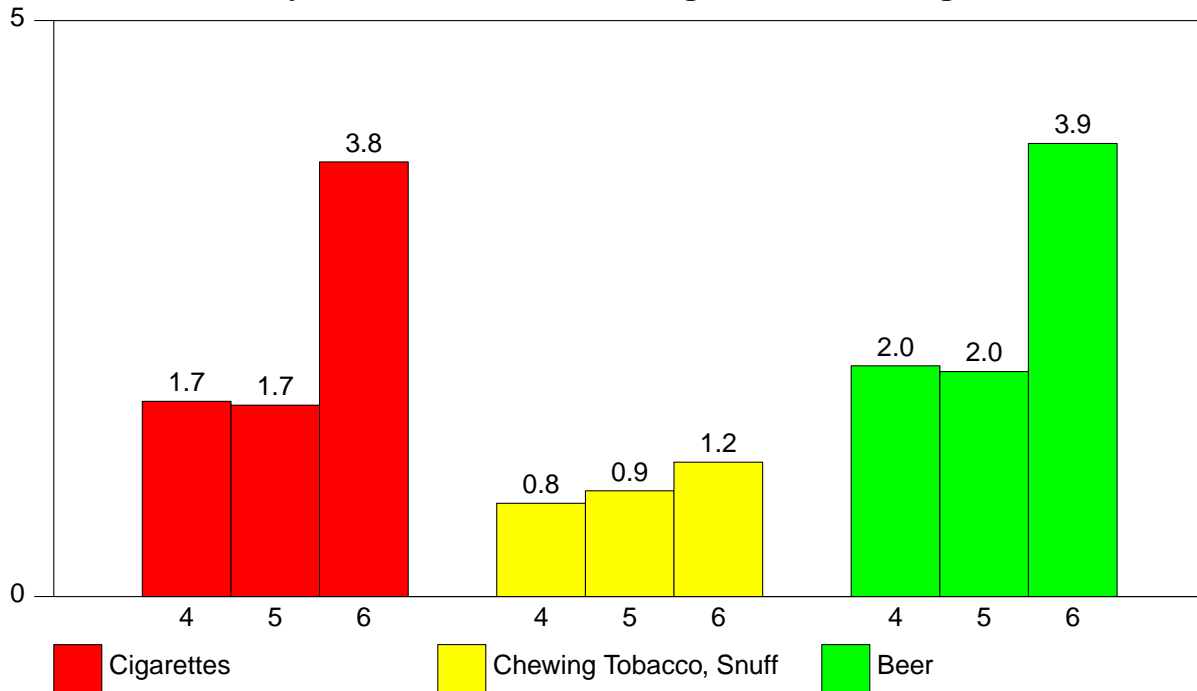


2.6 - How Easy Is It For Kids Your Age To Get Wine Coolers, Liquor, Marijuana

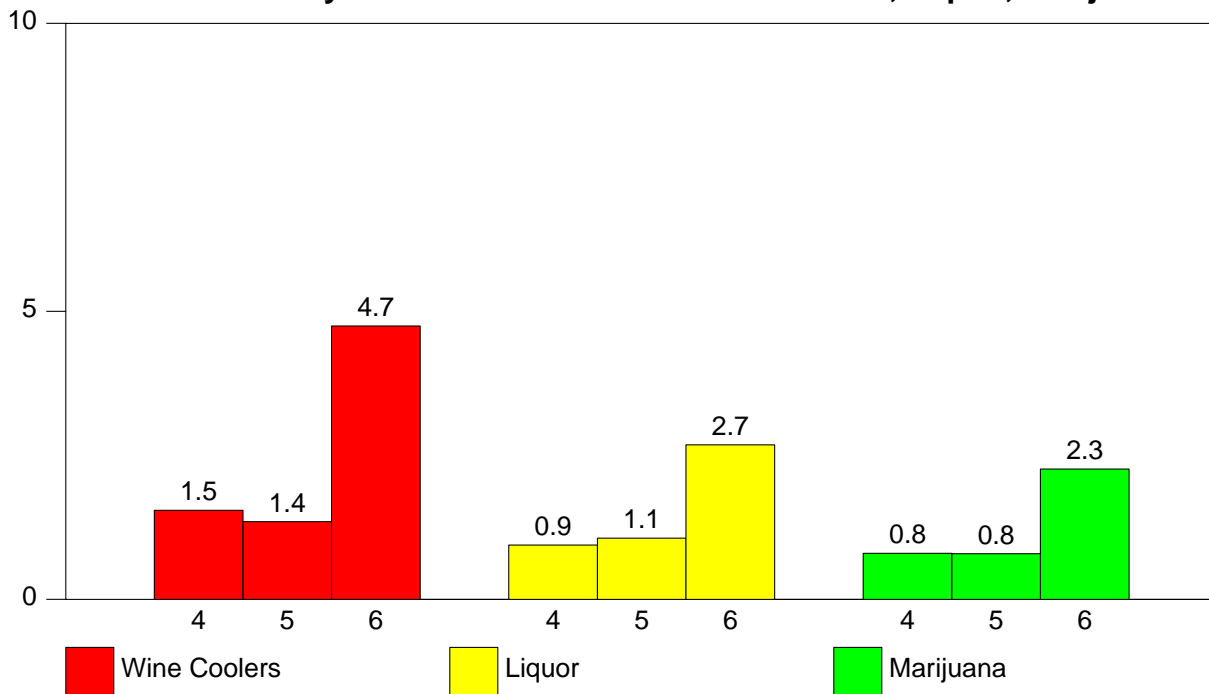


2.4. How Many Of Your Friends

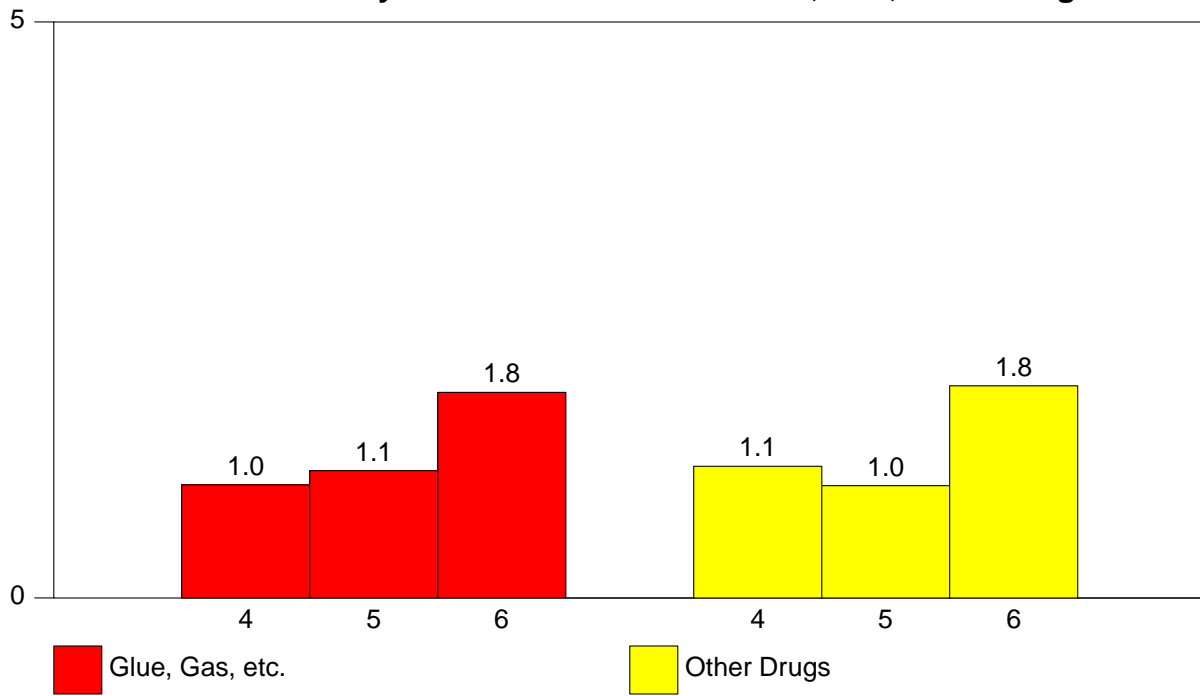
2.7 - How Many Of Your Friends Used Cigarettes, Chewing Tobacco, Beer



2.8 - How Many Of Your Friends Used Wine Coolers, Liquor, Marijuana



2.9 - How Many Of Your Friends Used Glue, Gas, Other Drugs



CHAPTER 3

PERCENTAGE TABLES

This chapter contains your school survey results in tabular form. Each table corresponds to an item on the questionnaire. The tables contain percentage data by grade level, (grades 4 through 6), and *Total*. The *N of Valid* column contains the number of students responding to the item and the *N of Missing* column contains the number of students not responding to the item. The remaining columns contain the percentages of students responding to the particular response categories.

The percentage tables of the report appear in the same order as corresponding questions on the questionnaire. The Table of Contents contains the percentage tables by section and gives the page number where each section is located. The List of Tables contains the location of each individual table.

The last section of tables presents the frequency of drug use data with the categories *collapsed* as follows:

- Weekly Use - *1-7 Times A Week*
- Monthly Use - *1-2 Times A Month + 1-7 Times A Week*
- Annual Use - *1-6 Times A Year + 1-2 Times A Month
+ 1-7 Times A Week*

3.1. Personal & Family Information

3.1 - Sex

<i>Grade Level</i>	<i>N of Valid</i>	<i>N of Miss</i>	<i>Male</i>	<i>Female</i>
4th	6424	21	49.5	50.5
5th	10960	43	50.7	49.3
6th	5035	23	49.2	50.8
Total	22419	87	50.0	50.0

3.2 - Ethnic Origin

<i>Grade Level</i>	<i>N of Valid</i>	<i>N of Miss</i>	<i>White</i>	<i>Black</i>	<i>Hispanic</i>	<i>Asian</i>	<i>Native American</i>
4th	6187	87	63.3	29.3	5.1	1.2	1.0
5th	10340	267	71.3	16.1	9.2	2.6	0.8
6th	4853	79	68.0	24.5	4.3	2.2	1.1
Total	21380	433	68.3	21.8	6.9	2.1	0.9

3.3 - Age

<i>Grade Level</i>	<i>N of Valid</i>	<i>N of Miss</i>	8	9	10	11	12	13	14+
4th	6383	62	1.5	44.6	46.2	6.8	0.8	0.0	0.0
5th	10857	146	0.0	1.4	55.2	39.2	3.9	0.3	0.0
6th	4997	62	0.0	0.0	1.5	52.1	38.8	6.7	0.8
Total	22237	270	0.4	13.5	40.5	32.8	10.9	1.7	0.2

3.2. Student Characteristics

3.4 - I make good grades.

<i>Grade Level</i>	<i>N of Valid</i>	<i>N of Miss</i>	<i>Never</i>	<i>Sometimes</i>	<i>A Lot</i>
4th	6379	66	1.0	52.5	46.5
5th	10934	69	0.7	51.1	48.2
6th	5044	15	0.9	49.4	49.8
Total	22357	150	0.8	51.1	48.1

3.5 - I get into trouble at school.

<i>Grade Level</i>	<i>N of Valid</i>	<i>N of Miss</i>	<i>Never</i>	<i>Sometimes</i>	<i>A Lot</i>
4th	6304	141	37.8	58.2	3.9
5th	10870	133	42.3	54.0	3.6
6th	5004	55	42.2	53.0	4.9
Total	22178	329	41.0	55.0	4.0

3.6 - I go to church or synagogue.

<i>Grade Level</i>	<i>N of Valid</i>	<i>N of Miss</i>	<i>Never</i>	<i>Sometimes</i>	<i>A Lot</i>
4th	6281	164	14.3	37.8	47.8
5th	10793	210	14.5	40.3	45.2
6th	4983	76	13.2	41.9	44.9
Total	22057	450	14.2	40.0	45.9

3.7 - I talk to my parents about my problems.

<i>Grade Level</i>	<i>N of Valid</i>	<i>N of Miss</i>	<i>Never</i>	<i>Sometimes</i>	<i>A Lot</i>
4th	6316	129	10.6	46.1	43.4
5th	10883	120	11.1	50.3	38.6
6th	5028	31	16.0	52.6	31.5
Total	22227	280	12.1	49.6	38.3

3.8 - My parents talk to me about the dangers of using drugs.

<i>Grade Level</i>	<i>N of Valid</i>	<i>N of Miss</i>	<i>Never</i>	<i>Sometimes</i>	<i>A Lot</i>
4th	6274	171	9.9	33.5	56.7
5th	10808	195	9.9	37.7	52.4
6th	4990	69	12.2	39.6	48.2
Total	22072	435	10.4	36.9	52.7

3.9 - My teachers talk to me about the dangers of using drugs.

<i>Grade Level</i>	<i>N of Valid</i>	<i>N of Miss</i>	<i>Never</i>	<i>Sometimes</i>	<i>A Lot</i>
4th	6285	160	9.7	44.5	45.8
5th	10862	141	7.4	43.9	48.7
6th	5007	52	8.8	47.1	44.1
Total	22154	353	8.4	44.8	46.8

3.10 - My parents make me follow certain rules.

<i>Grade Level</i>	<i>N of Valid</i>	<i>N of Miss</i>	<i>Never</i>	<i>Sometimes</i>	<i>A Lot</i>
4th	6331	114	3.3	27.6	69.2
5th	10880	123	2.7	30.8	66.5
6th	5012	47	3.4	32.9	63.7
Total	22223	284	3.0	30.4	66.6

3.11 - I have to be home at a certain time.

<i>Grade Level</i>	<i>N of Valid</i>	<i>N of Miss</i>	<i>Never</i>	<i>Sometimes</i>	<i>A Lot</i>
4th	6250	195	16.6	42.0	41.4
5th	10752	251	13.7	46.0	40.3
6th	4987	72	13.1	45.2	41.7
Total	21989	518	14.4	44.7	40.9

3.12 - I go to parties.

<i>Grade Level</i>	<i>N of Valid</i>	<i>N of Miss</i>	<i>Never</i>	<i>Sometimes</i>	<i>A Lot</i>
4th	6242	203	10.7	57.5	31.8
5th	10778	225	9.0	58.5	32.5
6th	4982	77	9.9	58.5	31.6
Total	22002	505	9.7	58.2	32.1

3.13 - I am alone at home.

<i>Grade Level</i>	<i>N of Valid</i>	<i>N of Miss</i>	<i>Never</i>	<i>Sometimes</i>	<i>A Lot</i>
4th	6251	194	49.8	43.1	7.2
5th	10764	239	37.3	53.5	9.2
6th	4972	87	25.8	60.2	14.0
Total	21987	520	38.2	52.1	9.7

3.14 - The kids at school like me.

<i>Grade Level</i>	<i>N of Valid</i>	<i>N of Miss</i>	<i>Never</i>	<i>Sometimes</i>	<i>A Lot</i>
4th	6269	176	5.4	41.5	53.1
5th	10762	241	3.6	39.1	57.3
6th	4973	86	3.0	35.5	61.5
Total	22004	503	4.0	39.0	57.0

3.15 - I feel lonely.

<i>Grade Level</i>	<i>N of Valid</i>	<i>N of Miss</i>	<i>Never</i>	<i>Sometimes</i>	<i>A Lot</i>
4th	6285	160	47.0	41.7	11.3
5th	10803	200	52.1	39.5	8.4
6th	4996	63	55.9	36.9	7.2
Total	22084	423	51.5	39.5	8.9

3.3. Within The Past Year How Often Have You Used

3.16 - Within the past year how often have you smoked cigarettes?

<i>Grade Level</i>	<i>N of Valid</i>	<i>N of Miss</i>	<i>Did Not Use</i>	<i>1-6/yr</i>	<i>1-2/mo</i>	<i>1-7/wk</i>
4th	6314	131	97.9	1.1	0.5	0.4
5th	10828	175	97.6	1.4	0.5	0.4
6th	4996	63	92.8	4.2	1.3	1.6
Total	22138	369	96.6	2.0	0.7	0.7

3.17 - Within the past year how often have you chewed tobacco, snuff?

<i>Grade Level</i>	<i>N of Valid</i>	<i>N of Miss</i>	<i>Did Not Use</i>	<i>1-6/yr</i>	<i>1-2/mo</i>	<i>1-7/wk</i>
4th	6254	191	99.0	0.6	0.2	0.2
5th	10769	234	98.9	0.6	0.2	0.2
6th	4962	97	97.9	1.2	0.5	0.4
Total	21985	522	98.7	0.7	0.3	0.3

3.18 - Within the past year how often have you drunk beer?

<i>Grade Level</i>	<i>N of Valid</i>	<i>N of Miss</i>	<i>Did Not Use</i>	<i>1-6/yr</i>	<i>1-2/mo</i>	<i>1-7/wk</i>
4th	6242	203	95.0	3.1	1.2	0.7
5th	10724	279	95.1	3.7	0.9	0.3
6th	4952	107	89.0	7.6	1.9	1.4
Total	21918	589	93.7	4.4	1.2	0.7

3.19 - Within the past year how often have you drunk wine coolers?

<i>Grade Level</i>	<i>N of Valid</i>	<i>N of Miss</i>	<i>Did Not Use</i>	<i>1-6/yr</i>	<i>1-2/mo</i>	<i>1-7/wk</i>
4th	6212	233	95.7	2.8	0.9	0.6
5th	10676	327	94.2	4.5	0.8	0.5
6th	4939	120	85.1	9.7	3.3	1.9
Total	21827	680	92.6	5.2	1.4	0.9

3.20 - Within the past year how often have you drunk liquor?

<i>Grade Level</i>	<i>N of Valid</i>	<i>N of Miss</i>	<i>Did Not Use</i>	<i>1-6/yr</i>	<i>1-2/mo</i>	<i>1-7/wk</i>
4th	6199	246	98.5	1.0	0.2	0.2
5th	10654	349	97.5	1.9	0.3	0.3
6th	4937	122	93.6	4.4	1.2	0.8
Total	21790	717	96.9	2.2	0.5	0.4

3.21 - Within the past year how often have you smoked marijuana?

<i>Grade Level</i>	<i>N of Valid</i>	<i>N of Miss</i>	<i>Did Not Use</i>	<i>1-6/yr</i>	<i>1-2/mo</i>	<i>1-7/wk</i>
4th	6155	290	99.5	0.2	0.1	0.2
5th	10619	384	99.4	0.3	0.1	0.2
6th	4933	126	97.9	0.9	0.5	0.7
Total	21707	800	99.1	0.4	0.2	0.3

3.22 - Within the past year how often have you sniffed glue, gas, etc.?

<i>Grade Level</i>	<i>N of Valid</i>	<i>N of Miss</i>	<i>Did Not Use</i>	<i>1-6/yr</i>	<i>1-2/mo</i>	<i>1-7/wk</i>
4th	6161	284	97.3	1.5	0.7	0.5
5th	10630	373	97.5	1.4	0.6	0.5
6th	4893	166	96.7	1.7	0.7	0.9
Total	21684	823	97.3	1.5	0.6	0.6

3.23 - Within the past year how often have you used other drugs?

<i>Grade Level</i>	<i>N of Valid</i>	<i>N of Miss</i>	<i>Did Not Use</i>	<i>1-6/yr</i>	<i>1-2/mo</i>	<i>1-7/wk</i>
4th	6150	295	98.9	0.6	0.2	0.3
5th	10564	439	99.3	0.3	0.2	0.2
6th	4890	169	98.1	1.0	0.3	0.6
Total	21604	903	98.9	0.5	0.2	0.3

3.4. How Many Of Your Friends

3.24 - How many of your friends smoked cigarettes?

<i>Grade Level</i>	<i>N of Valid</i>	<i>N of Miss</i>	<i>None</i>	<i>A Few</i>	<i>A Lot</i>
4th	6310	135	87.9	10.4	1.7
5th	10829	174	86.1	12.2	1.7
6th	4983	76	75.0	21.2	3.8
Total	22122	385	84.1	13.7	2.1

3.25 - How many of your friends chewed tobacco, snuff?

<i>Grade Level</i>	<i>N of Valid</i>	<i>N of Miss</i>	<i>None</i>	<i>A Few</i>	<i>A Lot</i>
4th	6295	150	95.3	3.9	0.8
5th	10787	216	95.2	3.9	0.9
6th	4971	88	91.8	7.1	1.2
Total	22053	454	94.4	4.6	0.9

3.26 - How many of your friends drank beer?

<i>Grade Level</i>	<i>N of Valid</i>	<i>N of Miss</i>	<i>None</i>	<i>A Few</i>	<i>A Lot</i>
4th	6289	156	88.2	9.8	2.0
5th	10752	251	87.2	10.9	2.0
6th	4957	102	79.2	16.8	3.9
Total	21998	509	85.7	11.9	2.4

3.27 - How many of your friends drank wine coolers?

<i>Grade Level</i>	<i>N of Valid</i>	<i>N of Miss</i>	<i>None</i>	<i>A Few</i>	<i>A Lot</i>
4th	6269	176	91.5	7.0	1.5
5th	10728	275	90.0	8.6	1.4
6th	4951	108	78.5	16.8	4.7
Total	21948	559	87.8	10.0	2.2

3.28 - How many of your friends drank liquor?

<i>Grade Level</i>	<i>N of Valid</i>	<i>N of Miss</i>	<i>None</i>	<i>A Few</i>	<i>A Lot</i>
4th	6260	185	95.7	3.4	0.9
5th	10723	280	94.7	4.2	1.1
6th	4957	102	88.4	8.9	2.7
Total	21940	567	93.6	5.0	1.4

3.29 - How many of your friends smoked marijuana?

<i>Grade Level</i>	<i>N of Valid</i>	<i>N of Miss</i>	<i>None</i>	<i>A Few</i>	<i>A Lot</i>
4th	6252	193	97.1	2.1	0.8
5th	10709	294	96.4	2.8	0.8
6th	4947	112	91.1	6.6	2.3
Total	21908	599	95.4	3.5	1.1

3.30 - How many of your friends sniffed glue, gas, etc.?

<i>Grade Level</i>	<i>N of Valid</i>	<i>N of Miss</i>	<i>None</i>	<i>A Few</i>	<i>A Lot</i>
4th	6219	226	94.3	4.7	1.0
5th	10684	319	93.2	5.7	1.1
6th	4931	128	90.0	8.2	1.8
Total	21834	673	92.8	6.0	1.2

3.31 - How many of your friends used other drugs?

<i>Grade Level</i>	<i>N of Valid</i>	<i>N of Miss</i>	<i>None</i>	<i>A Few</i>	<i>A Lot</i>
4th	6214	231	96.1	2.8	1.1
5th	10671	332	95.8	3.2	1.0
6th	4942	117	92.3	5.9	1.8
Total	21827	680	95.1	3.7	1.2

3.5. Harmful To Health

3.32 - Do you feel that using cigarettes is harmful to your health?

<i>Grade Level</i>	<i>N of Valid</i>	<i>N of Miss</i>	<i>No</i>	<i>Yes</i>	<i>A Lot</i>
4th	6323	122	14.6	40.3	45.1
5th	10876	127	7.2	45.1	47.7
6th	4991	68	7.7	47.4	44.9
Total	22190	317	9.4	44.3	46.3

3.33 - Do you feel that using chewing tobacco or snuff is harmful to your health?

<i>Grade Level</i>	<i>N of Valid</i>	<i>N of Miss</i>	<i>No</i>	<i>Yes</i>	<i>A Lot</i>
4th	6306	139	15.8	41.3	42.9
5th	10846	157	8.3	43.8	47.9
6th	4971	88	8.6	47.3	44.2
Total	22123	384	10.5	43.9	45.6

3.34 - Do you feel that using beer is harmful to your health?

<i>Grade Level</i>	<i>N of Valid</i>	<i>N of Miss</i>	<i>No</i>	<i>Yes</i>	<i>A Lot</i>
4th	6305	140	19.9	48.4	31.6
5th	10827	176	12.9	55.2	31.9
6th	4959	100	14.3	56.6	29.1
Total	22091	416	15.2	53.6	31.2

3.35 - Do you feel that using wine coolers is harmful to your health?

<i>Grade Level</i>	<i>N of Valid</i>	<i>N of Miss</i>	<i>No</i>	<i>Yes</i>	<i>A Lot</i>
4th	6264	181	21.5	47.1	31.4
5th	10778	225	15.6	54.0	30.4
6th	4938	121	21.7	52.0	26.2
Total	21980	527	18.7	51.6	29.8

3.36 - Do you feel that using liquor is harmful to your health?

<i>Grade Level</i>	<i>N of Valid</i>	<i>N of Miss</i>	<i>No</i>	<i>Yes</i>	<i>A Lot</i>
4th	6263	182	16.0	41.7	42.3
5th	10785	218	9.5	49.1	41.4
6th	4943	116	10.6	51.3	38.2
Total	21991	516	11.6	47.5	40.9

3.37 - Do you feel that using marijuana is harmful to your health?

<i>Grade Level</i>	<i>N of Valid</i>	<i>N of Miss</i>	<i>No</i>	<i>Yes</i>	<i>A Lot</i>
4th	6261	184	14.7	31.2	54.1
5th	10805	198	7.2	28.8	64.0
6th	4959	100	8.0	31.3	60.7
Total	22025	482	9.5	30.1	60.4

3.38 - Do you feel that using glue, gas, etc is harmful to your health?

<i>Grade Level</i>	<i>N of Valid</i>	<i>N of Miss</i>	<i>No</i>	<i>Yes</i>	<i>A Lot</i>
4th	6257	188	16.1	37.9	46.0
5th	10783	220	8.9	39.5	51.6
6th	4962	97	8.7	40.3	51.0
Total	22002	505	10.9	39.2	49.9

3.39 - Do you feel that using cocaine/crack is harmful to your health?

<i>Grade Level</i>	<i>N of Valid</i>	<i>N of Miss</i>	<i>No</i>	<i>Yes</i>	<i>A Lot</i>
4th	6216	229	14.4	29.6	56.0
5th	10756	247	7.2	27.6	65.2
6th	4958	101	7.2	29.5	63.3
Total	21930	577	9.2	28.6	62.2

3.6. Do You Think You Will Ever Use

3.40 - Do you think you will ever smoke cigarettes?

<i>Grade Level</i>	<i>N of Valid</i>	<i>N of Miss</i>	<i>Never</i>	<i>Maybe</i>	<i>Yes, I Will</i>	<i>Already Have</i>
4th	6306	139	88.4	9.5	0.7	1.5
5th	10828	175	87.1	10.6	0.6	1.7
6th	4979	80	80.7	13.2	1.1	5.0
Total	22113	394	86.0	10.8	0.7	2.4

3.41 - Do you think you will ever chew tobacco, snuff?

<i>Grade Level</i>	<i>N of Valid</i>	<i>N of Miss</i>	<i>Never</i>	<i>Maybe</i>	<i>Yes, I Will</i>	<i>Already Have</i>
4th	6275	170	96.2	2.8	0.4	0.6
5th	10784	219	96.4	2.7	0.3	0.6
6th	4972	87	94.8	3.6	0.4	1.3
Total	22031	476	96.0	2.9	0.4	0.8

3.42 - Do you think you will ever drink beer?

<i>Grade Level</i>	<i>N of Valid</i>	<i>N of Miss</i>	<i>Never</i>	<i>Maybe</i>	<i>Yes, I Will</i>	<i>Already Have</i>
4th	6260	185	75.2	19.4	3.0	2.4
5th	10778	225	69.1	24.0	4.8	2.2
6th	4951	108	63.6	24.6	6.7	5.0
Total	21989	518	69.6	22.8	4.7	2.9

3.43 - Do you think you will ever drink wine coolers?

<i>Grade Level</i>	<i>N of Valid</i>	<i>N of Miss</i>	<i>Never</i>	<i>Maybe</i>	<i>Yes, I Will</i>	<i>Already Have</i>
4th	6248	197	79.2	16.0	2.7	2.1
5th	10730	273	72.0	21.6	3.9	2.4
6th	4951	108	58.6	26.8	7.1	7.5
Total	21929	578	71.0	21.2	4.3	3.5

3.44 - Do you think you will ever drink liquor?

<i>Grade Level</i>	<i>N of Valid</i>	<i>N of Miss</i>	<i>Never</i>	<i>Maybe</i>	<i>Yes, I Will</i>	<i>Already Have</i>
4th	6226	219	92.9	5.6	0.9	0.6
5th	10753	250	85.5	11.4	2.1	1.0
6th	4947	112	79.5	13.9	3.6	3.0
Total	21926	581	86.2	10.3	2.1	1.3

3.45 - Do you think you will ever smoke marijuana?

<i>Grade Level</i>	<i>N of Valid</i>	<i>N of Miss</i>	<i>Never</i>	<i>Maybe</i>	<i>Yes, I Will</i>	<i>Already Have</i>
4th	6242	203	98.4	1.1	0.3	0.3
5th	10756	247	98.1	1.4	0.2	0.3
6th	4945	114	95.6	2.6	0.4	1.4
Total	21943	564	97.6	1.6	0.3	0.6

3.46 - Do you think you will ever sniff glue, gas, etc.?

<i>Grade Level</i>	<i>N of Valid</i>	<i>N of Miss</i>	<i>Never</i>	<i>Maybe</i>	<i>Yes, I Will</i>	<i>Already Have</i>
4th	6234	211	96.8	2.0	0.3	0.9
5th	10737	266	96.8	2.0	0.2	1.0
6th	4952	107	96.1	2.2	0.2	1.5
Total	21923	584	96.7	2.0	0.2	1.1

3.47 - Do you think you will ever use cocaine/crack?

<i>Grade Level</i>	<i>N of Valid</i>	<i>N of Miss</i>	<i>Never</i>	<i>Maybe</i>	<i>Yes, I Will</i>	<i>Already Have</i>
4th	6197	248	98.8	0.8	0.2	0.2
5th	10737	266	98.8	1.0	0.1	0.2
6th	4952	107	98.1	1.3	0.2	0.4
Total	21886	621	98.6	1.0	0.2	0.2

3.48 - Do you think you will ever use other drugs?

<i>Grade Level</i>	<i>N of Valid</i>	<i>N of Miss</i>	<i>Never</i>	<i>Maybe</i>	<i>Yes, I Will</i>	<i>Already Have</i>
4th	6201	244	96.7	2.5	0.4	0.4
5th	10689	314	96.7	2.7	0.2	0.4
6th	4934	125	96.1	2.9	0.3	0.6
Total	21824	683	96.6	2.7	0.3	0.5

3.7. How Easy Is It For Kids Your Age To Get

3.49 - How easy is it to get cigarettes?

<i>Grade Level</i>	<i>N of Valid</i>	<i>N of Miss</i>	<i>Cannot Get</i>	<i>Hard To Get</i>	<i>Easy To Get</i>
4th	6243	202	68.7	18.1	13.2
5th	10722	281	53.1	25.0	21.9
6th	4909	150	41.8	25.1	33.1
Total	21874	633	55.0	23.0	21.9

3.50 - How easy is it to get chewing tobacco, snuff?

<i>Grade Level</i>	<i>N of Valid</i>	<i>N of Miss</i>	<i>Cannot Get</i>	<i>Hard To Get</i>	<i>Easy To Get</i>
4th	6206	239	73.8	18.3	7.9
5th	10660	343	63.0	25.6	11.4
6th	4890	169	54.7	27.6	17.6
Total	21756	751	64.2	24.0	11.8

3.51 - How easy is it to get beer?

<i>Grade Level</i>	<i>N of Valid</i>	<i>N of Miss</i>	<i>Cannot Get</i>	<i>Hard To Get</i>	<i>Easy To Get</i>
4th	6207	238	64.8	19.9	15.3
5th	10655	348	50.1	24.5	25.4
6th	4882	177	40.3	25.4	34.4
Total	21744	763	52.1	23.4	24.6

3.52 - How easy is it to get wine coolers?

<i>Grade Level</i>	<i>N of Valid</i>	<i>N of Miss</i>	<i>Cannot Get</i>	<i>Hard To Get</i>	<i>Easy To Get</i>
4th	6180	265	68.7	19.0	12.3
5th	10611	392	55.4	24.6	20.0
6th	4868	191	43.0	25.6	31.4
Total	21659	848	56.4	23.2	20.4

3.53 - How easy is it to get liquor?

<i>Grade Level</i>	<i>N of Valid</i>	<i>N of Miss</i>	<i>Cannot Get</i>	<i>Hard To Get</i>	<i>Easy To Get</i>
4th	6140	305	75.5	17.3	7.2
5th	10620	383	60.9	24.4	14.7
6th	4866	193	51.4	26.6	22.1
Total	21626	881	62.9	22.9	14.2

3.54 - How easy is it to get marijuana?

<i>Grade Level</i>	<i>N of Valid</i>	<i>N of Miss</i>	<i>Cannot Get</i>	<i>Hard To Get</i>	<i>Easy To Get</i>
4th	6117	328	79.1	15.0	5.8
5th	10587	416	69.9	20.9	9.2
6th	4855	204	61.3	23.7	15.1
Total	21559	948	70.6	19.9	9.6

3.8. While At School Have You

3.55 - While at school have you smoked cigarettes?

<i>Grade Level</i>	<i>N of Valid</i>	<i>N of Miss</i>	<i>No</i>	<i>One Time</i>	<i>Two or More</i>
4th	6300	145	99.1	0.5	0.4
5th	10867	136	99.5	0.4	0.2
6th	4980	79	98.4	0.7	0.8
Total	22147	360	99.1	0.5	0.4

3.56 - While at school have you drunk beer, wine coolers or liquor?

<i>Grade Level</i>	<i>N of Valid</i>	<i>N of Miss</i>	<i>No</i>	<i>One Time</i>	<i>Two or More</i>
4th	6296	149	98.7	0.9	0.5
5th	10844	159	99.2	0.6	0.2
6th	4978	81	97.6	1.2	1.1
Total	22118	389	98.7	0.8	0.5

3.57 - While at school have you smoked marijuana?

<i>Grade Level</i>	<i>N of Valid</i>	<i>N of Miss</i>	<i>No</i>	<i>One Time</i>	<i>Two or More</i>
4th	6294	151	99.7	0.1	0.2
5th	10834	169	99.8	0.1	0.1
6th	4974	85	99.1	0.4	0.5
Total	22102	405	99.6	0.2	0.2

3.58 - While at school have you sniffed glue, gas, etc.?

<i>Grade Level</i>	<i>N of Valid</i>	<i>N of Miss</i>	<i>No</i>	<i>One Time</i>	<i>Two or More</i>
4th	6278	167	97.6	1.6	0.7
5th	10820	183	97.3	1.9	0.8
6th	4966	93	96.7	2.1	1.2
Total	22064	443	97.3	1.8	0.9

3.59 - While at school have you been afraid a student will hurt you?

<i>Grade Level</i>	<i>N of Valid</i>	<i>N of Miss</i>	<i>No</i>	<i>One Time</i>	<i>Two or More</i>
4th	6270	175	74.9	15.5	9.5
5th	10796	207	76.5	15.0	8.5
6th	4975	84	79.0	13.4	7.6
Total	22041	466	76.6	14.8	8.6

3.60 - While at school have you been threatened by a student?

<i>Grade Level</i>	<i>N of Valid</i>	<i>N of Miss</i>	<i>No</i>	<i>One Time</i>	<i>Two or More</i>
4th	6263	182	67.7	17.4	15.0
5th	10797	206	69.3	17.3	13.4
6th	4954	105	68.4	17.9	13.7
Total	22014	493	68.6	17.5	13.9

3.61 - While at school have you been hurt by a student?

<i>Grade Level</i>	<i>N of Valid</i>	<i>N of Miss</i>	<i>No</i>	<i>One Time</i>	<i>Two or More</i>
4th	6255	190	74.9	14.6	10.5
5th	10804	199	77.1	13.9	9.0
6th	4970	89	80.3	12.5	7.3
Total	22029	478	77.2	13.8	9.1

3.62 - While at school have you been hurt by an adult?

<i>Grade Level</i>	<i>N of Valid</i>	<i>N of Miss</i>	<i>No</i>	<i>One Time</i>	<i>Two or More</i>
4th	6238	207	92.9	3.9	3.2
5th	10772	231	94.7	3.1	2.1
6th	4954	105	94.8	3.0	2.2
Total	21964	543	94.2	3.3	2.5

3.9. While *Not At School* Have You**3.63 - While *not at school* have you smoked cigarettes?**

<i>Grade Level</i>	<i>N of Valid</i>	<i>N of Miss</i>	<i>No</i>	<i>One Time</i>	<i>Two or More</i>
4th	6314	131	96.2	2.7	1.1
5th	10829	174	95.5	2.9	1.6
6th	4990	69	88.4	6.7	4.9
Total	22133	374	94.1	3.7	2.2

3.64 - While *not at school* have you drunk beer, wine coolers or liquor?

<i>Grade Level</i>	<i>N of Valid</i>	<i>N of Miss</i>	<i>No</i>	<i>One Time</i>	<i>Two or More</i>
4th	6305	140	92.0	5.9	2.0
5th	10802	201	90.3	6.6	3.1
6th	4990	69	80.6	11.0	8.4
Total	22097	410	88.6	7.4	4.0

3.65 - While *not at school* have you smoked marijuana?

<i>Grade Level</i>	<i>N of Valid</i>	<i>N of Miss</i>	<i>No</i>	<i>One Time</i>	<i>Two or More</i>
4th	6292	153	99.4	0.2	0.3
5th	10808	195	99.4	0.4	0.3
6th	4977	82	97.5	1.0	1.4
Total	22077	430	99.0	0.5	0.6

3.66 - While *not at school* have you sniffed glue, gas, etc.?

<i>Grade Level</i>	<i>N of Valid</i>	<i>N of Miss</i>	<i>No</i>	<i>One Time</i>	<i>Two or More</i>
4th	6294	151	97.6	1.6	0.8
5th	10789	214	97.7	1.5	0.8
6th	4971	88	97.0	1.5	1.4
Total	22054	453	97.5	1.5	0.9

3.67 - While *not at school* have you been afraid a student will hurt you?

<i>Grade Level</i>	<i>N of Valid</i>	<i>N of Miss</i>	<i>No</i>	<i>One Time</i>	<i>Two or More</i>
4th	6276	169	82.4	10.5	7.1
5th	10779	224	84.9	9.5	5.7
6th	4974	85	86.3	8.5	5.3
Total	22029	478	84.5	9.5	6.0

3.68 - While *not* at school have you been threatened by a student?

<i>Grade Level</i>	<i>N of Valid</i>	<i>N of Miss</i>	<i>No</i>	<i>One Time</i>	<i>Two or More</i>
4th	6277	168	77.6	12.0	10.4
5th	10776	227	80.6	10.6	8.8
6th	4970	89	80.1	11.3	8.6
Total	22023	484	79.6	11.2	9.2

3.69 - While *not* at school have you been hurt by a student?

<i>Grade Level</i>	<i>N of Valid</i>	<i>N of Miss</i>	<i>No</i>	<i>One Time</i>	<i>Two or More</i>
4th	6267	178	81.5	10.3	8.2
5th	10774	229	84.0	9.2	6.9
6th	4966	93	86.7	7.9	5.4
Total	22007	500	83.9	9.2	6.9

3.70 - While *not* at school have you been hurt by an adult?

<i>Grade Level</i>	<i>N of Valid</i>	<i>N of Miss</i>	<i>No</i>	<i>One Time</i>	<i>Two or More</i>
4th	6254	191	88.0	5.5	6.4
5th	10727	276	90.0	5.1	5.0
6th	4957	102	89.7	4.9	5.4
Total	21938	569	89.4	5.2	5.5

3.10. Is It OK For Kids My Age To

3.71 - Is it OK for kids my age to smoke cigarettes?

<i>Grade Level</i>	<i>N of Valid</i>	<i>N of Miss</i>	<i>No</i>	<i>Yes</i>
4th	6331	114	98.9	1.1
5th	10884	119	98.7	1.3
6th	4994	65	97.1	2.9
Total	22209	298	98.4	1.6

3.72 - Is it OK for kids my age to drink beer?

<i>Grade Level</i>	<i>N of Valid</i>	<i>N of Miss</i>	<i>No</i>	<i>Yes</i>
4th	6314	131	97.3	2.7
5th	10858	145	97.4	2.6
6th	4990	69	95.0	5.0
Total	22162	345	96.8	3.2

3.73 - Is it OK for kids my age to drink wine coolers?

<i>Grade Level</i>	<i>N of Valid</i>	<i>N of Miss</i>	<i>No</i>	<i>Yes</i>
4th	6289	156	96.0	4.0
5th	10828	175	96.1	3.9
6th	4977	82	89.6	10.4
Total	22094	413	94.6	5.4

3.74 - Is it OK for kids my age to drink liquor?

<i>Grade Level</i>	<i>N of Valid</i>	<i>N of Miss</i>	<i>No</i>	<i>Yes</i>
4th	6287	158	99.0	1.0
5th	10836	167	98.5	1.5
6th	4980	79	96.9	3.1
Total	22103	404	98.3	1.7

3.75 - Is it OK for kids my age to smoke marijuana?

<i>Grade Level</i>	<i>N of Valid</i>	<i>N of Miss</i>	<i>No</i>	<i>Yes</i>
4th	6295	150	99.5	0.5
5th	10837	166	99.2	0.8
6th	4980	79	97.7	2.3
Total	22112	395	98.9	1.1

3.76 - Is it OK for kids my age to steal something if you need it?

<i>Grade Level</i>	<i>N of Valid</i>	<i>N of Miss</i>	<i>No</i>	<i>Yes</i>
4th	6285	160	97.8	2.2
5th	10820	183	97.1	2.9
6th	4968	91	95.5	4.5
Total	22073	434	97.0	3.0

3.77 - Is it OK for kids my age to sell drugs if you need the money?

<i>Grade Level</i>	<i>N of Valid</i>	<i>N of Miss</i>	<i>No</i>	<i>Yes</i>
4th	6289	156	98.7	1.3
5th	10820	183	98.4	1.6
6th	4970	89	96.9	3.1
Total	22079	428	98.2	1.8

3.78 - Is it OK for kids my age to carry a gun for protection?

<i>Grade Level</i>	<i>N of Valid</i>	<i>N of Miss</i>	<i>No</i>	<i>Yes</i>
4th	6248	197	96.6	3.4
5th	10761	242	96.2	3.8
6th	4947	112	94.0	6.0
Total	21956	551	95.9	4.1

3.79 - Is it OK for kids my age to take what you want, even if it means hurting someone?

<i>Grade Level</i>	<i>N of Valid</i>	<i>N of Miss</i>	<i>No</i>	<i>Yes</i>
4th	6278	167	98.2	1.8
5th	10802	201	98.6	1.4
6th	4971	88	97.6	2.4
Total	22051	456	98.3	1.7

3.80 - Is it OK for kids my age to beat up another student if it is a fair fight?

<i>Grade Level</i>	<i>N of Valid</i>	<i>N of Miss</i>	<i>No</i>	<i>Yes</i>
4th	6249	196	88.6	11.4
5th	10776	227	88.1	11.9
6th	4952	107	81.4	18.6
Total	21977	530	86.7	13.3

3.11. Frequency of Use

3.81 - Frequency of Use -- Cigarettes

<i>Grade Level</i>	<i>N of Valid</i>	<i>N of Miss</i>	<i>Weekly Use</i>	<i>Monthly Use</i>	<i>Annual Use</i>
4th	6314	131	0.4	1.0	2.1
5th	10828	175	0.4	1.0	2.4
6th	4996	63	1.6	2.9	7.2
Total	22138	369	0.7	1.4	3.4

3.82 - Frequency of Use -- Chewing Tobacco, Snuff

<i>Grade Level</i>	<i>N of Valid</i>	<i>N of Miss</i>	<i>Weekly Use</i>	<i>Monthly Use</i>	<i>Annual Use</i>
4th	6254	191	0.2	0.5	1.0
5th	10769	234	0.2	0.5	1.1
6th	4962	97	0.4	0.9	2.1
Total	21985	522	0.3	0.6	1.3

3.83 - Frequency of Use -- Beer

<i>Grade Level</i>	<i>N of Valid</i>	<i>N of Miss</i>	<i>Weekly Use</i>	<i>Monthly Use</i>	<i>Annual Use</i>
4th	6242	203	0.7	1.9	5.0
5th	10724	279	0.3	1.2	4.9
6th	4952	107	1.4	3.3	11.0
Total	21918	589	0.7	1.9	6.3

3.84 - Frequency of Use -- Wine Coolers

<i>Grade Level</i>	<i>N of Valid</i>	<i>N of Miss</i>	<i>Weekly Use</i>	<i>Monthly Use</i>	<i>Annual Use</i>
4th	6212	233	0.6	1.6	4.3
5th	10676	327	0.5	1.3	5.8
6th	4939	120	1.9	5.1	14.9
Total	21827	680	0.9	2.3	7.4

3.85 - Frequency of Use -- Liquor

<i>Grade Level</i>	<i>N of Valid</i>	<i>N of Miss</i>	<i>Weekly Use</i>	<i>Monthly Use</i>	<i>Annual Use</i>
4th	6199	246	0.2	0.5	1.5
5th	10654	349	0.3	0.5	2.5
6th	4937	122	0.8	2.0	6.4
Total	21790	717	0.4	0.8	3.1

3.86 - Frequency of Use -- Marijuana

<i>Grade Level</i>	<i>N of Valid</i>	<i>N of Miss</i>	<i>Weekly Use</i>	<i>Monthly Use</i>	<i>Annual Use</i>
4th	6155	290	0.2	0.3	0.5
5th	10619	384	0.2	0.3	0.6
6th	4933	126	0.7	1.2	2.1
Total	21707	800	0.3	0.5	0.9

3.87 - Frequency of Use -- Glue, Gas, etc.

<i>Grade Level</i>	<i>N of Valid</i>	<i>N of Miss</i>	<i>Weekly Use</i>	<i>Monthly Use</i>	<i>Annual Use</i>
4th	6161	284	0.5	1.2	2.7
5th	10630	373	0.5	1.1	2.5
6th	4893	166	0.9	1.6	3.3
Total	21684	823	0.6	1.2	2.7

3.88 - Frequency of Use -- Other Drugs

<i>Grade Level</i>	<i>N of Valid</i>	<i>N of Miss</i>	<i>Weekly Use</i>	<i>Monthly Use</i>	<i>Annual Use</i>
4th	6150	295	0.3	0.6	1.1
5th	10564	439	0.2	0.4	0.7
6th	4890	169	0.6	0.9	1.9
Total	21604	903	0.3	0.6	1.1

TABLE OF CONTENTS

1 INTRODUCTION	1
1.1 Tobacco Use	2
1.2 Alcohol Use	2
1.3 Marijuana Use	2
1.4 Inhalant Use	2
1.5 What You Can Do As A Parent, Teacher, Or Concerned Citizen?	3
2 STANDARD GRAPHICS	4
2.1 Frequency Of Use	5
2.2 Harmful To Health	6
2.3 How Easy Is It For Kids Your Age To Get	7
2.4 How Many Of Your Friends	8
3 PERCENTAGE TABLES	10
3.1 Personal & Family Information	11
3.2 Student Characteristics	12
3.3 Within The Past Year How Often Have You Used	15
3.4 How Many Of Your Friends	17
3.5 Harmful To Health	19
3.6 Do You Think You Will Ever Use	21
3.7 How Easy Is It For Kids Your Age To Get	23
3.8 While At School Have You	25
3.9 While <i>Not</i> At School Have You	27
3.10 Is It OK For Kids My Age To	29
3.11 Frequency of Use	31

LIST OF TABLES

3.1 - Sex	11
3.2 - Ethnic Origin	11
3.3 - Age	11
3.4 - I make good grades.	12
3.5 - I get into trouble at school.	12
3.6 - I go to church or synagogue.	12
3.7 - I talk to my parents about my problems.	12
3.8 - My parents talk to me about the dangers of using drugs.	12
3.9 - My teachers talk to me about the dangers of using drugs.	13
3.10 - My parents make me follow certain rules.	13
3.11 - I have to be home at a certain time.	13
3.12 - I go to parties.	13
3.13 - I am alone at home.	13
3.14 - The kids at school like me.	14
3.15 - I feel lonely.	14
3.16 - Within the past year how often have you smoked cigarettes?	15
3.17 - Within the past year how often have you chewed tobacco, snuff?	15
3.18 - Within the past year how often have you drunk beer?	15
3.19 - Within the past year how often have you drunk wine coolers?	15
3.20 - Within the past year how often have you drunk liquor?	15
3.21 - Within the past year how often have you smoked marijuana?	16
3.22 - Within the past year how often have you sniffed glue, gas, etc.?	16
3.23 - Within the past year how often have you used other drugs?	16
3.24 - How many of your friends smoked cigarettes?	17
3.25 - How many of your friends chewed tobacco, snuff?	17
3.26 - How many of your friends drank beer?	17
3.27 - How many of your friends drank wine coolers?	17
3.28 - How many of your friends drank liquor?	17
3.29 - How many of your friends smoked marijuana?	18
3.30 - How many of your friends sniffed glue, gas, etc.?	18
3.31 - How many of your friends used other drugs?	18
3.32 - Do you feel that using cigarettes is harmful to your health?	19
3.33 - Do you feel that using chewing tobacco or snuff is harmful to your health?	19
3.34 - Do you feel that using beer is harmful to your health?	19
3.35 - Do you feel that using wine coolers is harmful to your health?	19
3.36 - Do you feel that using liquor is harmful to your health?	19
3.37 - Do you feel that using marijuana is harmful to your health?	20
3.38 - Do you feel that using glue, gas, etc is harmful to your health?	20
3.39 - Do you feel that using cocaine/crack is harmful to your health?	20
3.40 - Do you think you will ever smoke cigarettes?	21

3.41 - Do you think you will ever chew tobacco, snuff?	21
3.42 - Do you think you will ever drink beer?	21
3.43 - Do you think you will ever drink wine coolers?	21
3.44 - Do you think you will ever drink liquor?	21
3.45 - Do you think you will ever smoke marijuana?	22
3.46 - Do you think you will ever sniff glue, gas, etc.?	22
3.47 - Do you think you will ever use cocaine/crack?	22
3.48 - Do you think you will ever use other drugs?	22
3.49 - How easy is it to get cigarettes?	23
3.50 - How easy is it to get chewing tobacco, snuff?	23
3.51 - How easy is it to get beer?	23
3.52 - How easy is it to get wine coolers?	23
3.53 - How easy is it to get liquor?	23
3.54 - How easy is it to get marijuana?	24
3.55 - While <i>at</i> school have you smoked cigarettes?	25
3.56 - While <i>at</i> school have you drunk beer, wine coolers or liquor?	25
3.57 - While <i>at</i> school have you smoked marijuana?	25
3.58 - While <i>at</i> school have you sniffed glue, gas, etc.?	25
3.59 - While <i>at</i> school have you been afraid a student will hurt you?	25
3.60 - While <i>at</i> school have you been threatened by a student?	26
3.61 - While <i>at</i> school have you been hurt by a student?	26
3.62 - While <i>at</i> school have you been hurt by an adult?	26
3.63 - While <i>not</i> at school have you smoked cigarettes?	27
3.64 - While <i>not</i> at school have you drunk beer, wine coolers or liquor?	27
3.65 - While <i>not</i> at school have you smoked marijuana?	27
3.66 - While <i>not</i> at school have you sniffed glue, gas, etc.?	27
3.67 - While <i>not</i> at school have you been afraid a student will hurt you?	27
3.68 - While <i>not</i> at school have you been threatened by a student?	28
3.69 - While <i>not</i> at school have you been hurt by a student?	28
3.70 - While <i>not</i> at school have you been hurt by an adult?	28
3.71 - Is it OK for kids my age to smoke cigarettes?	29
3.72 - Is it OK for kids my age to drink beer?	29
3.73 - Is it OK for kids my age to drink wine coolers?	29
3.74 - Is it OK for kids my age to drink liquor?	29
3.75 - Is it OK for kids my age to smoke marijuana?	29
3.76 - Is it OK for kids my age to steal something if you need it?	30
3.77 - Is it OK for kids my age to sell drugs if you need the money?	30
3.78 - Is it OK for kids my age to carry a gun for protection?	30
3.79 - Is it OK for kids my age to take what you want, even if it means hurting some- one?	30
3.80 - Is it OK for kids my age to beat up another student if it is a fair fight?	30
3.81 - Frequency of Use -- Cigarettes	31
3.82 - Frequency of Use -- Chewing Tobacco, Snuff	31
3.83 - Frequency of Use -- Beer	31
3.84 - Frequency of Use -- Wine Coolers	31
3.85 - Frequency of Use -- Liquor	31

List of Tables

3.86 - Frequency of Use -- Marijuana	32
3.87 - Frequency of Use -- Glue, Gas, etc.	32
3.88 - Frequency of Use -- Other Drugs	32

LIST OF FIGURES

2.1 - % Students Who Use Gateway Drugs	5
2.2 - % Students Who Use Illicit Drugs	5
2.3 - Harmful to Health -- Cigarettes, Tobacco, Beer, Wine Coolers	6
2.4 - Harmful to Health -- Liquor, Marijuana, Glue, Gas, Cocaine/Crack	6
2.5 - How Easy Is It For Kids Your Age To Get Cigarettes, Tobacco, Beer	7
2.6 - How Easy Is It For Kids Your Age To Get Wine Coolers, Liquor, Marijuana	7
2.7 - How Many Of Your Friends Used Cigarettes, Chewing Tobacco, Beer	8
2.8 - How Many Of Your Friends Used Wine Coolers, Liquor, Marijuana	8
2.9 - How Many Of Your Friends Used Glue, Gas, Other Drugs	8