

***PRIDE
QUESTIONNAIRE
REPORT***

1997-98 National Summary
Grades 4 through 6

UE970001-234

Mon Aug 19 11:34:40 CDT 2002



CHAPTER 1

INTRODUCTION

The following summary, graphs, and tables are compiled from data collected in your school(s) using the PRIDE Questionnaire. These data reflect prevalence and patterns of local drug and alcohol use. It is important that this report be utilized as part of your drug abuse awareness and prevention program. We strongly suggest that you

COPY THE FOLLOWING PAGES

and

DISTRIBUTE THEM TO YOUR FACULTY.

The pages highlight and graphically summarize drug use by students in your school.

- Number of 4th grade students surveyed: 8881
- Number of 5th grade students surveyed: 11954
- Number of 6th grade students surveyed: 5251
- Number of students surveyed: 26086

1.1. Tobacco Use

4.1 percent of your 4th grade students said they smoked cigarettes within the past year (1996-97 PRIDE National Avg. = 3.7%). **7.0** percent of your 5th grade students said they smoked cigarettes within the past year (1996-97 PRIDE National Avg. = 5.8%). **14.8** percent of your 6th grade students said they smoked cigarettes within the past year (1996-97 PRIDE National Avg. = 13.0%).

2.0 percent of your 4th grade students said they used chewing tobacco or snuff within the past year (1996-97 PRIDE National Avg. = 1.7%). **2.4** percent of your 5th grade students said they used chewing tobacco or snuff within the past year (1996-97 PRIDE National Avg. = 1.8%). **4.0** percent of your 6th grade students said they used chewing tobacco or snuff within the past year (1996-97 PRIDE National Avg. = 3.4%).

1.2. Alcohol Use

7.7 percent of your 4th grade students said they drank beer within the past year (1996-97 PRIDE National Avg. = 8.4%). **8.2** percent of your 5th grade students said they drank beer within the past year (1996-97 PRIDE National Avg. = 9.3%). **15.0** percent of your 6th grade students said they drank beer within the past year (1996-97 PRIDE National Avg. = 15.8%).

6.6 percent of your 4th grade students said they drank wine coolers within the past year (1996-97 PRIDE National Avg. = 7.4%). **9.5** percent of your 5th grade students said they drank wine coolers within the past year (1996-97 PRIDE National Avg. = 10.2%). **18.4** percent of your 6th grade students said they drank wine coolers within the past year (1996-97 PRIDE National Avg. = 16.7%).

2.4 percent of your 4th grade students said they drank liquor within the past year (1996-97 PRIDE National Avg. = 2.7%). **3.7** percent of your 5th grade students said they drank liquor within the past year (1996-97 PRIDE National Avg. = 4.4%). **8.9** percent of your 6th grade students said they drank liquor within the past year (1996-97 PRIDE National Avg. = 9.5%).

NOTE: Beer and wine coolers are the favorite intoxicants of American students.

1.3. Marijuana Use

1.2 percent of your 5th grade students said they smoked marijuana within the past year (1996-97 PRIDE National Avg. = 1.1%). **3.7** percent of your 6th grade students said they smoked marijuana within the past year (1996-97 PRIDE National Avg. = 2.8%).

Local percentages below 1% are not reported.

1.4. Inhalant Use

6.3 percent of your 4th grade students said they sniffed glue, gas, etc. within the past year (1996-97 PRIDE National Avg. = 6.5%). **6.0** percent of your 5th grade students said they sniffed glue, gas, etc. within the past year (1996-97 PRIDE National Avg. = 5.7%). **7.3** percent of your 6th grade students said they sniffed glue, gas, etc. within the past year (1996-97 PRIDE National Avg. = 6.4%).

1.5. What You Can Do As A Parent, Teacher, Or Concerned Citizen?

The drug merchandisers thrive on the ignorance, apathy, and irresponsibility of ordinary citizens.

YOU CAN MAKE A DIFFERENCE!

Here's how:

- (1) Educate yourself and your family about the health hazards of drugs.
- (2) Insist on no illegal drug use by youngsters. This includes alcohol, tobacco and marijuana.
- (3) Support drug education in the schools, workplace, churches and civic associations.
- (4) Rebuild understanding and respect for the laws concerning alcohol, marijuana, cocaine and other drugs.
- (5) Recognize the danger of the illegal consumer as well as the illegal supplier of alcohol and other drugs.
- (6) Support law-enforcement efforts at home and abroad.
- (7) Write letters, telephone and visit those members of the publishing, merchandising and media world who glamorize, trivialize or subsidize the drug culture.

CHAPTER 2

STANDARD GRAPHICS

The following graphs will assist you in understanding the relationship of student behavior to alcohol and other drug usage. You are encouraged to make overheads or slides from the graphs for presentations to school faculty, parents, media, and other audiences in the community.

The *Frequency of Use* graphs show the percent of students at each grade level who report any use of the various drugs. The graphs are divided into *Gateway* and *Illicit* drug categories.

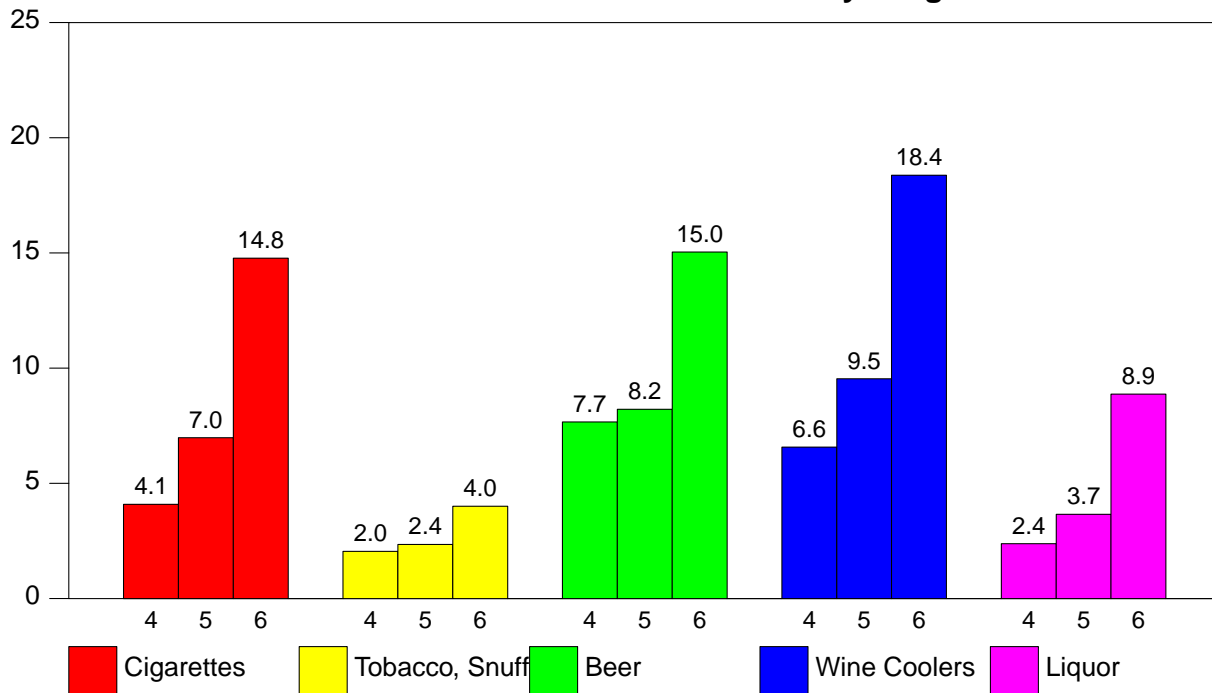
The *Perceived Harm* of alcohol and other drugs will assist with understanding how the false assumptions concerning harm are related to drug use. When drugs are perceived as harmless, the probability of use increases. These graphs show the percent of students who marked *Yes* or *A Lot* on the question *Do You Think The Following Are Harmful To Your Health*.

Research indicates that easy access, *Availability*, to drug increases the probability of use. Availability of alcohol and other drugs normally increases at higher grade levels. These graphs show the percent of students who marked *Easy To Get* on the question *How Easy Is It For Kids Your Age To Get*.

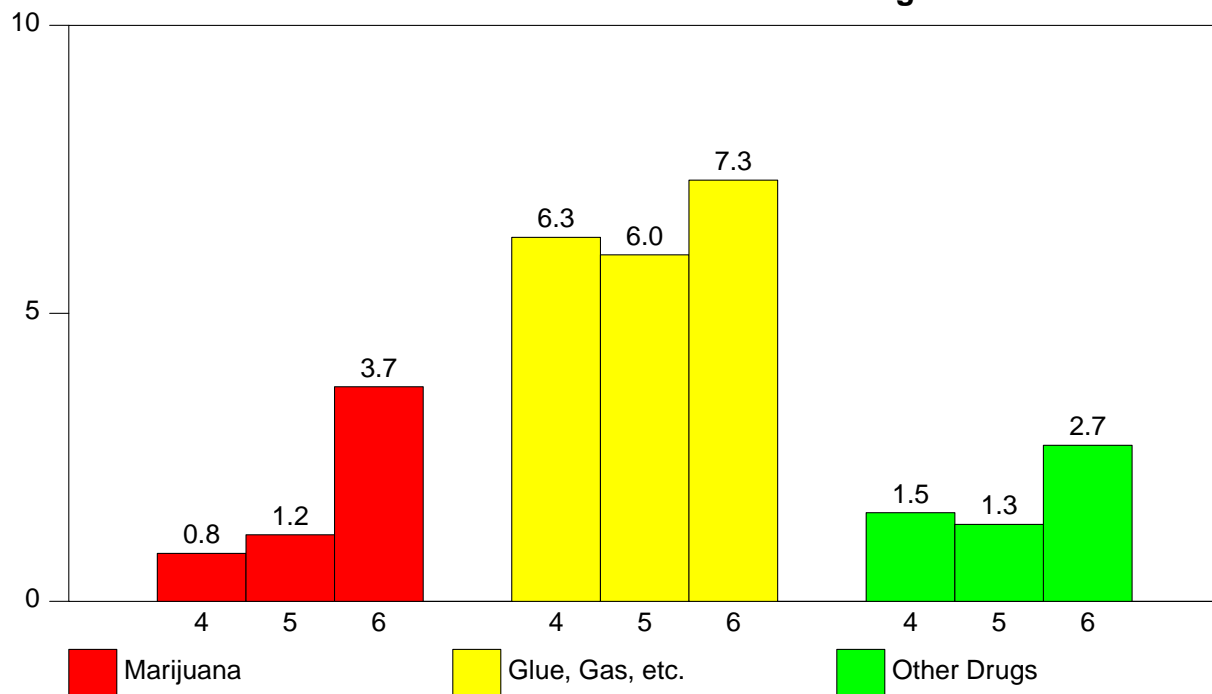
Data collected in past years using the **PRIDE Surveys Questionnaire** indicate a high correlation between friends use of drugs and an individual students use of drugs (i.e. a student who reports use of drugs by friends is more likely to use drugs). These graphs show the percent of students who marked *A Lot* on the question *How Many Of Your Friends Use*.

2.1. Frequency Of Use

2.1 - % Students Who Use Gateway Drugs

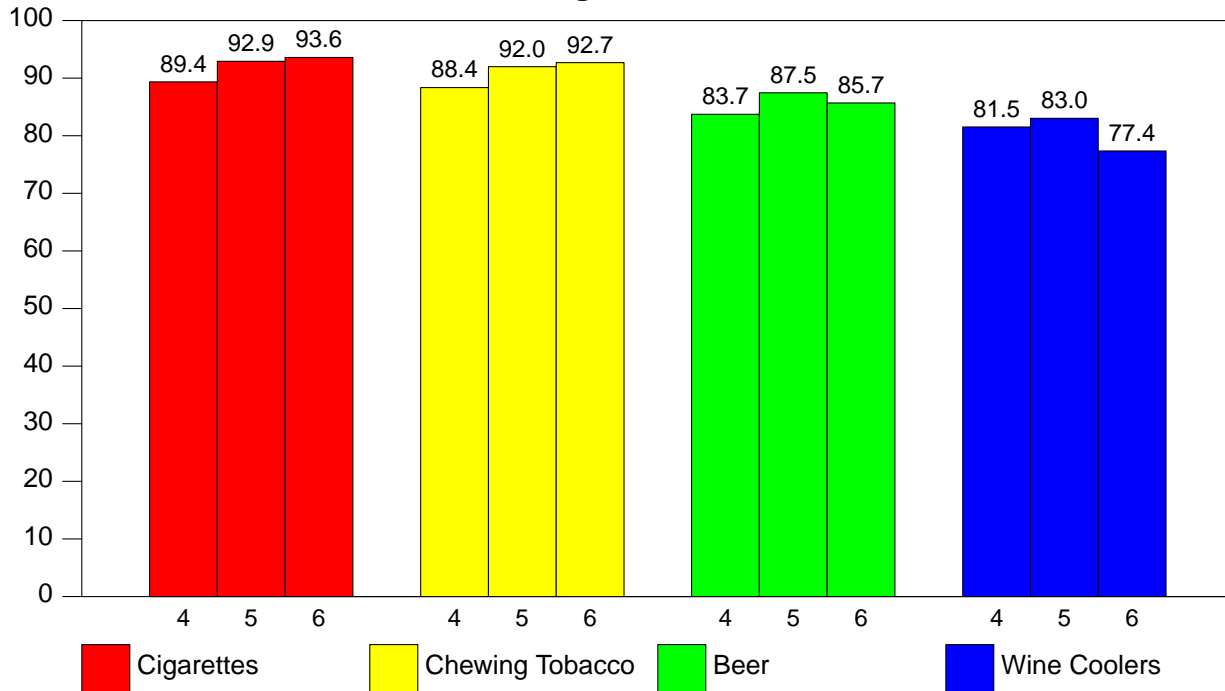


2.2 - % Students Who Use Illicit Drugs

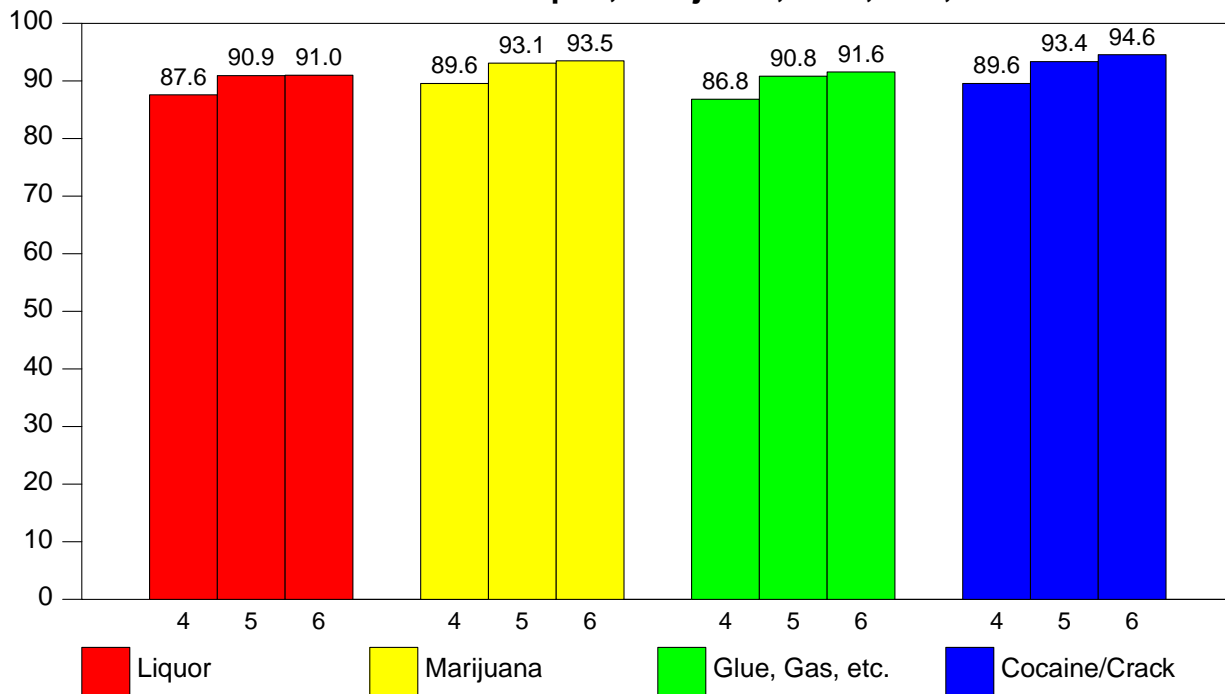


2.2. Harmful To Health

2.3 - Harmful to Health -- Cigarettes, Tobacco, Beer, Wine Coolers

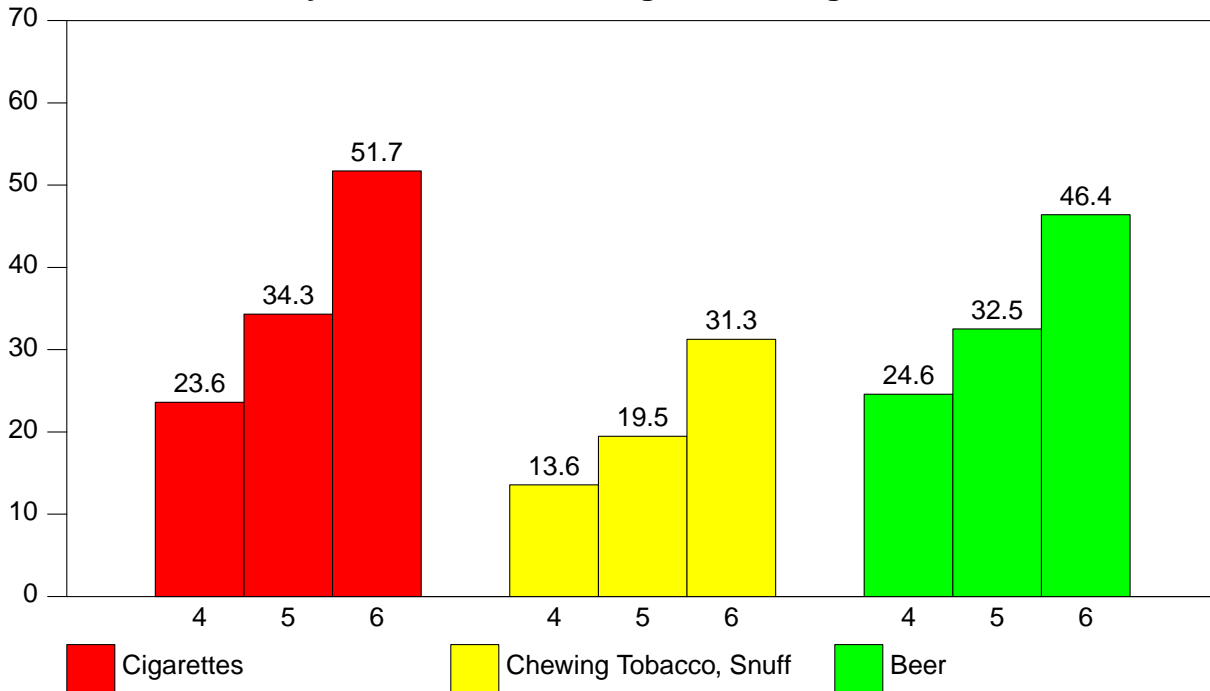


2.4 - Harmful to Health -- Liquor, Marijuana, Glue, Gas, Cocaine/Crack

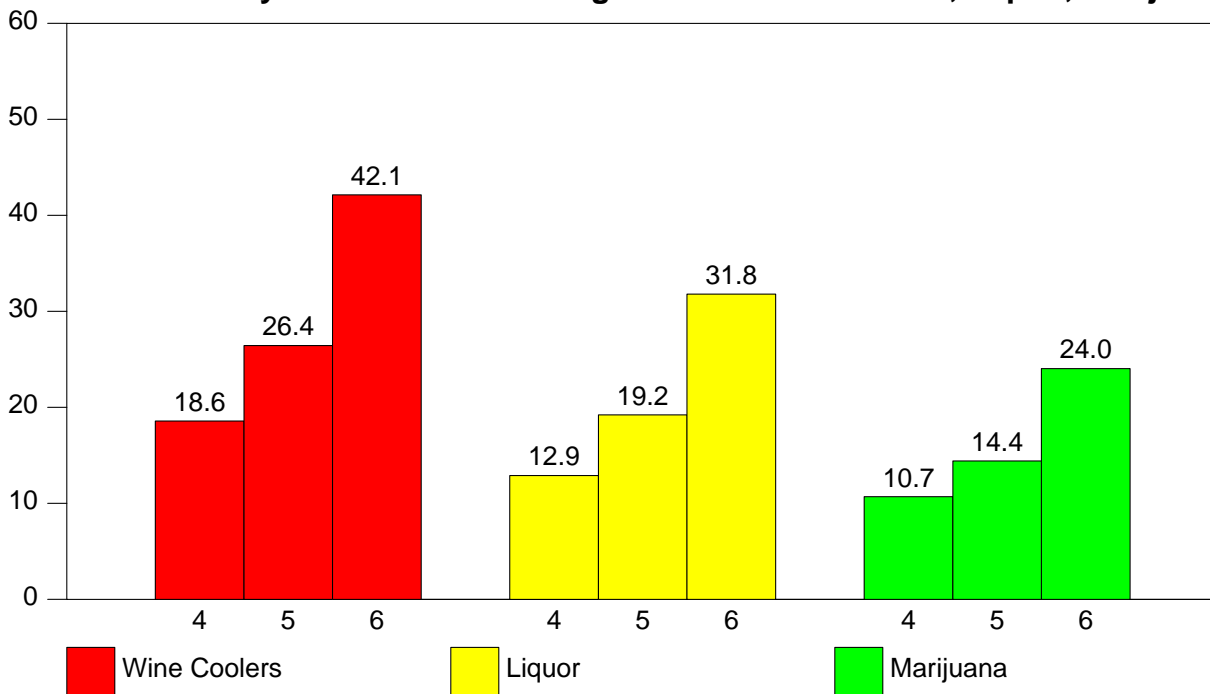


2.3. How Easy Is It For Kids Your Age To Get

2.5 - How Easy Is It For Kids Your Age To Get Cigarettes, Tobacco, Beer

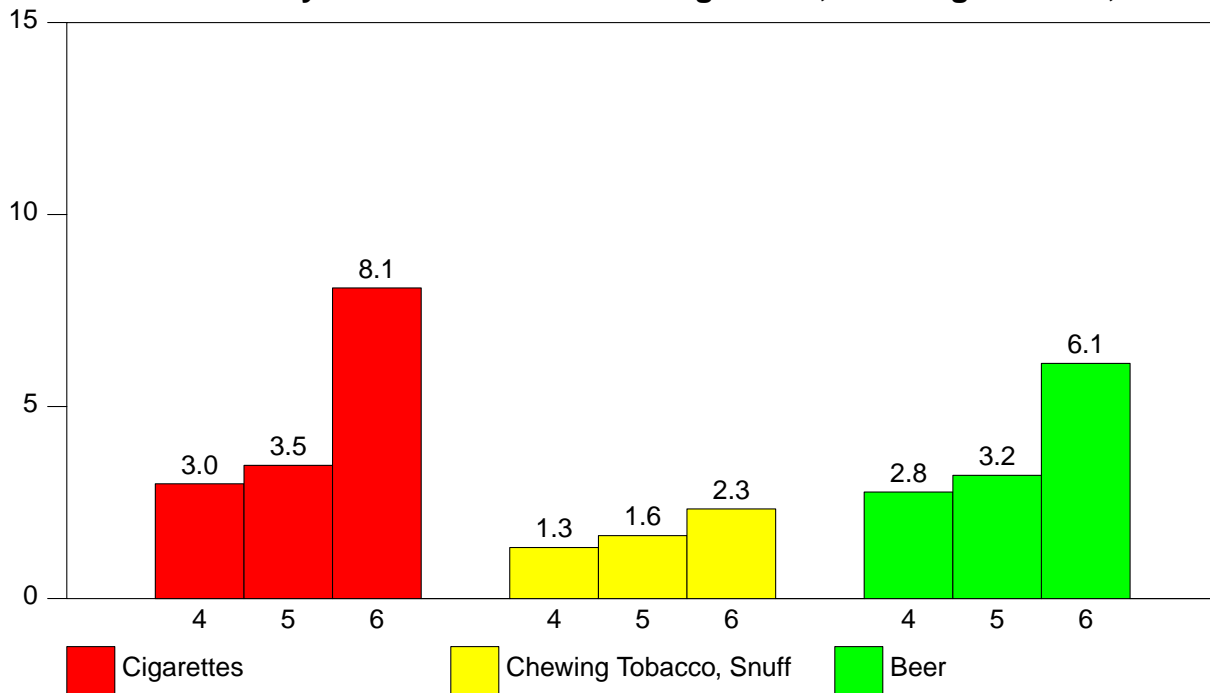


2.6 - How Easy Is It For Kids Your Age To Get Wine Coolers, Liquor, Marijuana

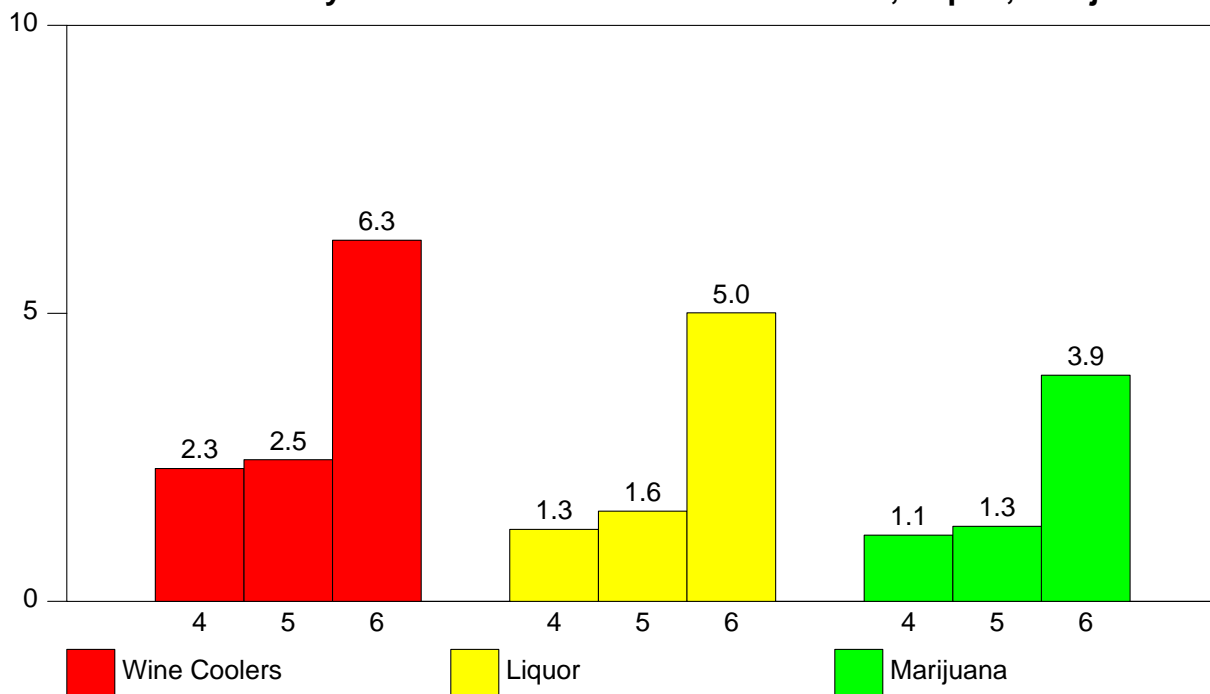


2.4. How Many Of Your Friends

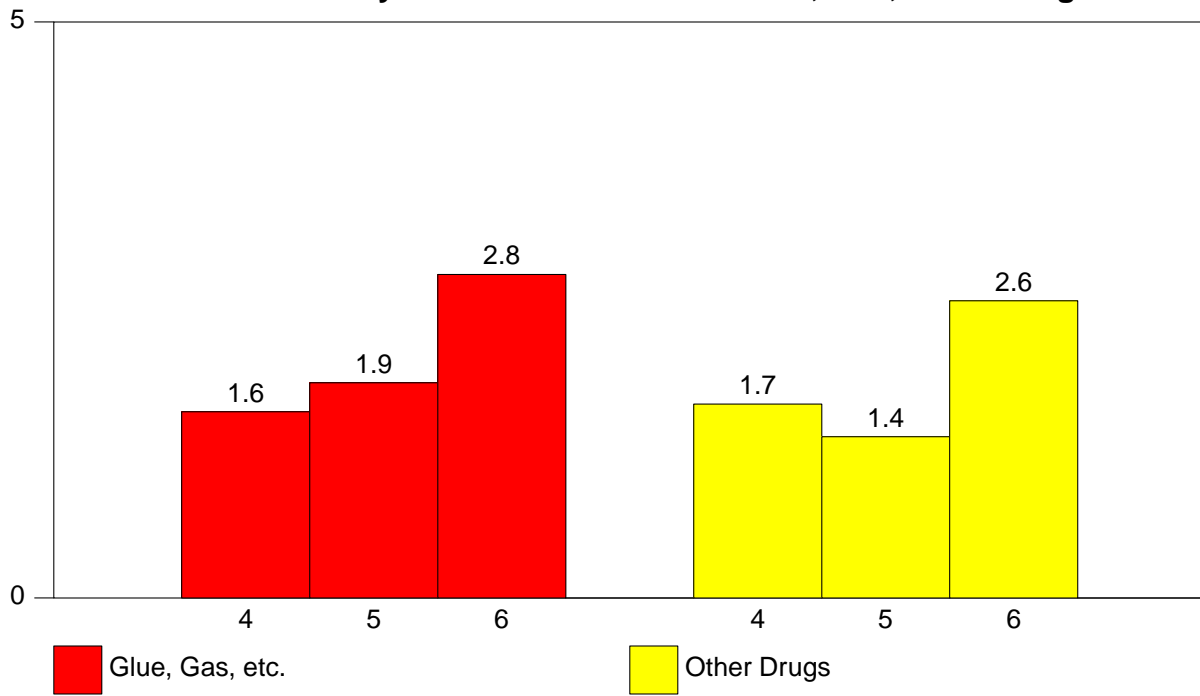
2.7 - How Many Of Your Friends Used Cigarettes, Chewing Tobacco, Beer



2.8 - How Many Of Your Friends Used Wine Coolers, Liquor, Marijuana



2.9 - How Many Of Your Friends Used Glue, Gas, Other Drugs



CHAPTER 3

PERCENTAGE TABLES

This chapter contains your school survey results in tabular form. Each table corresponds to an item on the questionnaire. The tables contain percentage data by grade level, (grades 4 through 6), and *Total*. The *N of Valid* column contains the number of students responding to the item and the *N of Missing* column contains the number of students not responding to the item. The remaining columns contain the percentages of students responding to the particular response categories.

The percentage tables of the report appear in the same order as corresponding questions on the questionnaire. The Table of Contents contains the percentage tables by section and gives the page number where each section is located. The List of Tables contains the location of each individual table.

The last section of tables presents the frequency of drug use data with the categories *collapsed* as follows:

- Weekly Use - *1-7 Times A Week*
- Monthly Use - *1-2 Times A Month + 1-7 Times A Week*
- Annual Use - *1-6 Times A Year + 1-2 Times A Month
+ 1-7 Times A Week*

3.1. Personal & Family Information

3.1 - Sex

<i>Grade Level</i>	<i>N of Valid</i>	<i>N of Miss</i>	<i>Male</i>	<i>Female</i>
4th	8867	14	50.1	49.9
5th	11937	17	49.5	50.5
6th	5245	6	50.2	49.8
Total	26049	37	49.8	50.2

3.2 - Ethnic Origin

<i>Grade Level</i>	<i>N of Valid</i>	<i>N of Miss</i>	<i>White</i>	<i>Black</i>	<i>Hispanic</i>	<i>Asian</i>	<i>Native American</i>
4th	8550	103	74.1	20.0	3.8	0.8	1.4
5th	11558	182	79.0	16.3	3.2	0.8	0.7
6th	5106	50	78.0	18.5	1.9	1.0	0.5
Total	25214	335	77.2	18.0	3.1	0.8	0.9

3.3 - Age

<i>Grade Level</i>	<i>N of Valid</i>	<i>N of Miss</i>	8	9	10	11	12	13	14+
4th	8854	27	0.4	40.9	52.3	6.0	0.3	0.0	0.0
5th	11906	48	0.0	0.2	37.6	55.2	6.6	0.3	0.0
6th	5234	17	0.0	0.0	0.3	36.7	53.5	8.6	0.8
Total	25994	92	0.2	14.0	35.1	34.7	13.9	1.9	0.2

3.2. Student Characteristics

3.4 - I make good grades.

<i>Grade Level</i>	<i>N of Valid</i>	<i>N of Miss</i>	<i>Never</i>	<i>Sometimes</i>	<i>A Lot</i>
4th	8826	55	1.0	53.9	45.0
5th	11915	39	0.7	50.5	48.8
6th	5235	16	0.8	54.0	45.2
Total	25976	110	0.9	52.4	46.8

3.5 - I get into trouble at school.

<i>Grade Level</i>	<i>N of Valid</i>	<i>N of Miss</i>	<i>Never</i>	<i>Sometimes</i>	<i>A Lot</i>
4th	8766	115	37.4	58.3	4.2
5th	11854	100	39.1	56.5	4.3
6th	5206	45	34.6	59.3	6.1
Total	25826	260	37.6	57.7	4.7

3.6 - I go to church or synagogue.

<i>Grade Level</i>	<i>N of Valid</i>	<i>N of Miss</i>	<i>Never</i>	<i>Sometimes</i>	<i>A Lot</i>
4th	8720	161	17.5	36.8	45.7
5th	11785	169	15.1	37.2	47.7
6th	5190	61	16.4	39.7	43.9
Total	25695	391	16.2	37.5	46.3

3.7 - I talk to my parents about my problems.

<i>Grade Level</i>	<i>N of Valid</i>	<i>N of Miss</i>	<i>Never</i>	<i>Sometimes</i>	<i>A Lot</i>
4th	8801	80	10.4	47.4	42.3
5th	11879	75	12.0	52.2	35.8
6th	5225	26	17.2	54.6	28.2
Total	25905	181	12.5	51.1	36.5

3.8 - My parents talk to me about the dangers of using drugs.

<i>Grade Level</i>	<i>N of Valid</i>	<i>N of Miss</i>	<i>Never</i>	<i>Sometimes</i>	<i>A Lot</i>
4th	8758	123	10.2	35.0	54.7
5th	11800	154	11.5	40.2	48.2
6th	5194	57	13.0	43.1	43.9
Total	25752	334	11.4	39.0	49.6

3.9 - My teachers talk to me about the dangers of using drugs.

<i>Grade Level</i>	<i>N of Valid</i>	<i>N of Miss</i>	<i>Never</i>	<i>Sometimes</i>	<i>A Lot</i>
4th	8770	111	5.9	40.8	53.3
5th	11831	123	5.7	42.0	52.3
6th	5219	32	6.8	47.1	46.1
Total	25820	266	6.0	42.6	51.4

3.10 - My parents make me follow certain rules.

<i>Grade Level</i>	<i>N of Valid</i>	<i>N of Miss</i>	<i>Never</i>	<i>Sometimes</i>	<i>A Lot</i>
4th	8799	82	2.7	29.2	68.2
5th	11861	93	2.7	30.8	66.5
6th	5222	29	3.1	34.3	62.6
Total	25882	204	2.8	30.9	66.3

3.11 - I have to be home at a certain time.

<i>Grade Level</i>	<i>N of Valid</i>	<i>N of Miss</i>	<i>Never</i>	<i>Sometimes</i>	<i>A Lot</i>
4th	8709	172	14.3	44.2	41.5
5th	11764	190	12.0	46.8	41.2
6th	5180	71	11.2	46.7	42.1
Total	25653	433	12.6	45.9	41.5

3.12 - I go to parties.

<i>Grade Level</i>	<i>N of Valid</i>	<i>N of Miss</i>	<i>Never</i>	<i>Sometimes</i>	<i>A Lot</i>
4th	8727	154	8.0	58.7	33.3
5th	11773	181	9.1	61.6	29.3
6th	5193	58	7.9	60.8	31.3
Total	25693	393	8.5	60.5	31.1

3.13 - I am alone at home.

<i>Grade Level</i>	<i>N of Valid</i>	<i>N of Miss</i>	<i>Never</i>	<i>Sometimes</i>	<i>A Lot</i>
4th	8715	166	44.0	48.0	8.0
5th	11763	191	30.6	57.7	11.7
6th	5192	59	20.1	63.4	16.5
Total	25670	416	33.0	55.6	11.4

3.14 - The kids at school like me.

<i>Grade Level</i>	<i>N of Valid</i>	<i>N of Miss</i>	<i>Never</i>	<i>Sometimes</i>	<i>A Lot</i>
4th	8734	147	4.3	38.4	57.3
5th	11777	177	3.3	36.6	60.1
6th	5186	65	3.1	36.1	60.8
Total	25697	389	3.6	37.1	59.3

3.15 - I feel lonely.

<i>Grade Level</i>	<i>N of Valid</i>	<i>N of Miss</i>	<i>Never</i>	<i>Sometimes</i>	<i>A Lot</i>
4th	8753	128	44.2	45.4	10.4
5th	11817	137	47.6	43.7	8.7
6th	5192	59	50.1	42.1	7.8
Total	25762	324	46.9	44.0	9.1

3.3. Within The Past Year How Often Have You Used

3.16 - Within the past year how often have you smoked cigarettes?

<i>Grade Level</i>	<i>N of Valid</i>	<i>N of Miss</i>	<i>Did Not Use</i>	<i>1-6/yr</i>	<i>1-2/mo</i>	<i>1-7/wk</i>
4th	8804	77	95.9	2.5	0.8	0.8
5th	11869	85	93.0	4.2	1.6	1.2
6th	5226	25	85.2	7.8	3.8	3.2
Total	25899	187	92.4	4.3	1.8	1.5

3.17 - Within the past year how often have you chewed tobacco, snuff?

<i>Grade Level</i>	<i>N of Valid</i>	<i>N of Miss</i>	<i>Did Not Use</i>	<i>1-6/yr</i>	<i>1-2/mo</i>	<i>1-7/wk</i>
4th	8782	99	98.0	1.1	0.5	0.5
5th	11869	85	97.6	1.2	0.6	0.5
6th	5217	34	96.0	2.5	0.9	0.7
Total	25868	218	97.4	1.4	0.6	0.5

3.18 - Within the past year how often have you drunk beer?

<i>Grade Level</i>	<i>N of Valid</i>	<i>N of Miss</i>	<i>Did Not Use</i>	<i>1-6/yr</i>	<i>1-2/mo</i>	<i>1-7/wk</i>
4th	8789	92	92.3	5.6	1.4	0.7
5th	11840	114	91.8	6.0	1.5	0.7
6th	5206	45	85.0	10.4	3.3	1.3
Total	25835	251	90.6	6.7	1.9	0.8

3.19 - Within the past year how often have you drunk wine coolers?

<i>Grade Level</i>	<i>N of Valid</i>	<i>N of Miss</i>	<i>Did Not Use</i>	<i>1-6/yr</i>	<i>1-2/mo</i>	<i>1-7/wk</i>
4th	8772	109	93.4	4.4	1.4	0.8
5th	11832	122	90.5	7.0	1.7	0.8
6th	5197	54	81.6	13.0	3.7	1.7
Total	25801	285	89.7	7.3	2.0	1.0

3.20 - Within the past year how often have you drunk liquor?

<i>Grade Level</i>	<i>N of Valid</i>	<i>N of Miss</i>	<i>Did Not Use</i>	<i>1-6/yr</i>	<i>1-2/mo</i>	<i>1-7/wk</i>
4th	8768	113	97.6	1.7	0.4	0.3
5th	11843	111	96.3	2.8	0.5	0.3
6th	5207	44	91.1	5.9	2.1	0.9
Total	25818	268	95.7	3.0	0.8	0.4

3.21 - Within the past year how often have you smoked marijuana?

<i>Grade Level</i>	<i>N of Valid</i>	<i>N of Miss</i>	<i>Did Not Use</i>	<i>1-6/yr</i>	<i>1-2/mo</i>	<i>1-7/wk</i>
4th	8765	116	99.2	0.4	0.2	0.2
5th	11831	123	98.8	0.5	0.3	0.3
6th	5206	45	96.3	2.1	1.0	0.7
Total	25802	284	98.4	0.8	0.4	0.3

3.22 - Within the past year how often have you sniffed glue, gas, etc.?

<i>Grade Level</i>	<i>N of Valid</i>	<i>N of Miss</i>	<i>Did Not Use</i>	<i>1-6/yr</i>	<i>1-2/mo</i>	<i>1-7/wk</i>
4th	8751	130	93.7	4.1	1.3	0.9
5th	11819	135	94.0	3.7	1.4	0.9
6th	5209	42	92.7	4.6	1.7	1.0
Total	25779	307	93.6	4.0	1.4	1.0

3.23 - Within the past year how often have you used other drugs?

<i>Grade Level</i>	<i>N of Valid</i>	<i>N of Miss</i>	<i>Did Not Use</i>	<i>1-6/yr</i>	<i>1-2/mo</i>	<i>1-7/wk</i>
4th	8763	118	98.5	0.7	0.4	0.4
5th	11827	127	98.7	0.7	0.3	0.3
6th	5205	46	97.3	1.3	0.7	0.7
Total	25795	291	98.3	0.8	0.4	0.4

3.4. How Many Of Your Friends

3.24 - How many of your friends smoked cigarettes?

<i>Grade Level</i>	<i>N of Valid</i>	<i>N of Miss</i>	<i>None</i>	<i>A Few</i>	<i>A Lot</i>
4th	8762	119	81.8	15.2	3.0
5th	11836	118	73.4	23.1	3.5
6th	5204	47	56.7	35.2	8.1
Total	25802	284	72.9	22.9	4.2

3.25 - How many of your friends chewed tobacco, snuff?

<i>Grade Level</i>	<i>N of Valid</i>	<i>N of Miss</i>	<i>None</i>	<i>A Few</i>	<i>A Lot</i>
4th	8734	147	92.9	5.8	1.3
5th	11780	174	90.2	8.2	1.6
6th	5183	68	84.5	13.1	2.3
Total	25697	389	89.9	8.4	1.7

3.26 - How many of your friends drank beer?

<i>Grade Level</i>	<i>N of Valid</i>	<i>N of Miss</i>	<i>None</i>	<i>A Few</i>	<i>A Lot</i>
4th	8719	162	83.6	13.6	2.8
5th	11780	174	80.9	15.8	3.2
6th	5190	61	68.8	25.1	6.1
Total	25689	397	79.4	17.0	3.7

3.27 - How many of your friends drank wine coolers?

<i>Grade Level</i>	<i>N of Valid</i>	<i>N of Miss</i>	<i>None</i>	<i>A Few</i>	<i>A Lot</i>
4th	8714	167	88.3	9.4	2.3
5th	11748	206	84.3	13.2	2.5
6th	5183	68	71.4	22.3	6.3
Total	25645	441	83.1	13.8	3.2

3.28 - How many of your friends drank liquor?

<i>Grade Level</i>	<i>N of Valid</i>	<i>N of Miss</i>	<i>None</i>	<i>A Few</i>	<i>A Lot</i>
4th	8714	167	93.7	5.0	1.3
5th	11747	207	91.2	7.2	1.6
6th	5168	83	80.4	14.6	5.0
Total	25629	457	89.9	7.9	2.2

3.29 - How many of your friends smoked marijuana?

<i>Grade Level</i>	<i>N of Valid</i>	<i>N of Miss</i>	<i>None</i>	<i>A Few</i>	<i>A Lot</i>
4th	8697	184	95.9	2.9	1.1
5th	11753	201	93.9	4.8	1.3
6th	5171	80	85.6	10.5	3.9
Total	25621	465	92.9	5.3	1.8

3.30 - How many of your friends sniffed glue, gas, etc.?

<i>Grade Level</i>	<i>N of Valid</i>	<i>N of Miss</i>	<i>None</i>	<i>A Few</i>	<i>A Lot</i>
4th	8659	222	89.7	8.7	1.6
5th	11721	233	88.1	10.0	1.9
6th	5164	87	84.3	12.9	2.8
Total	25544	542	87.9	10.1	2.0

3.31 - How many of your friends used other drugs?

<i>Grade Level</i>	<i>N of Valid</i>	<i>N of Miss</i>	<i>None</i>	<i>A Few</i>	<i>A Lot</i>
4th	8674	207	94.1	4.2	1.7
5th	11720	234	93.5	5.1	1.4
6th	5156	95	88.4	9.0	2.6
Total	25550	536	92.7	5.6	1.7

3.5. Harmful To Health

3.32 - Do you feel that using cigarettes is harmful to your health?

<i>Grade Level</i>	<i>N of Valid</i>	<i>N of Miss</i>	<i>No</i>	<i>Yes</i>	<i>A Lot</i>
4th	8693	188	10.6	45.2	44.1
5th	11732	222	7.1	49.9	43.0
6th	5162	89	6.4	52.8	40.8
Total	25587	499	8.1	48.9	43.0

3.33 - Do you feel that using chewing tobacco or snuff is harmful to your health?

<i>Grade Level</i>	<i>N of Valid</i>	<i>N of Miss</i>	<i>No</i>	<i>Yes</i>	<i>A Lot</i>
4th	8650	231	11.6	44.4	44.0
5th	11664	290	8.0	47.9	44.1
6th	5133	118	7.3	51.8	40.9
Total	25447	639	9.1	47.5	43.4

3.34 - Do you feel that using beer is harmful to your health?

<i>Grade Level</i>	<i>N of Valid</i>	<i>N of Miss</i>	<i>No</i>	<i>Yes</i>	<i>A Lot</i>
4th	8612	269	16.3	52.2	31.5
5th	11632	322	12.5	57.4	30.0
6th	5124	127	14.3	57.3	28.4
Total	25368	718	14.2	55.6	30.2

3.35 - Do you feel that using wine coolers is harmful to your health?

<i>Grade Level</i>	<i>N of Valid</i>	<i>N of Miss</i>	<i>No</i>	<i>Yes</i>	<i>A Lot</i>
4th	8556	325	18.5	50.5	31.0
5th	11564	390	17.0	55.7	27.3
6th	5093	158	22.6	54.3	23.0
Total	25213	873	18.6	53.7	27.7

3.36 - Do you feel that using liquor is harmful to your health?

<i>Grade Level</i>	<i>N of Valid</i>	<i>N of Miss</i>	<i>No</i>	<i>Yes</i>	<i>A Lot</i>
4th	8556	325	12.4	44.8	42.7
5th	11554	400	9.1	50.5	40.4
6th	5078	173	9.0	52.9	38.1
Total	25188	898	10.2	49.1	40.7

3.37 - Do you feel that using marijuana is harmful to your health?

<i>Grade Level</i>	<i>N of Valid</i>	<i>N of Miss</i>	<i>No</i>	<i>Yes</i>	<i>A Lot</i>
4th	8560	321	10.4	29.4	60.1
5th	11592	362	6.9	29.2	63.9
6th	5101	150	6.5	30.5	62.9
Total	25253	833	8.0	29.5	62.4

3.38 - Do you feel that using glue, gas, etc is harmful to your health?

<i>Grade Level</i>	<i>N of Valid</i>	<i>N of Miss</i>	<i>No</i>	<i>Yes</i>	<i>A Lot</i>
4th	8564	317	13.2	42.5	44.3
5th	11546	408	9.2	43.3	47.6
6th	5086	165	8.4	42.6	49.0
Total	25196	890	10.4	42.9	46.8

3.39 - Do you feel that using cocaine/crack is harmful to your health?

<i>Grade Level</i>	<i>N of Valid</i>	<i>N of Miss</i>	<i>No</i>	<i>Yes</i>	<i>A Lot</i>
4th	8550	331	10.4	28.1	61.5
5th	11557	397	6.6	27.6	65.7
6th	5097	154	5.4	27.4	67.1
Total	25204	882	7.7	27.7	64.6

3.6. Do You Think You Will Ever Use

3.40 - Do you think you will ever smoke cigarettes?

<i>Grade Level</i>	<i>N of Valid</i>	<i>N of Miss</i>	<i>Never</i>	<i>Maybe</i>	<i>Yes, I Will</i>	<i>Already Have</i>
4th	8732	149	81.0	14.6	1.2	3.2
5th	11769	185	76.3	17.6	1.4	4.7
6th	5172	79	67.7	20.1	1.6	10.6
Total	25673	413	76.2	17.1	1.3	5.4

3.41 - Do you think you will ever chew tobacco, snuff?

<i>Grade Level</i>	<i>N of Valid</i>	<i>N of Miss</i>	<i>Never</i>	<i>Maybe</i>	<i>Yes, I Will</i>	<i>Already Have</i>
4th	8666	215	93.9	4.2	0.7	1.2
5th	11705	249	93.5	4.5	0.6	1.4
6th	5148	103	89.6	6.1	0.9	3.4
Total	25519	567	92.8	4.7	0.7	1.7

3.42 - Do you think you will ever drink beer?

<i>Grade Level</i>	<i>N of Valid</i>	<i>N of Miss</i>	<i>Never</i>	<i>Maybe</i>	<i>Yes, I Will</i>	<i>Already Have</i>
4th	8650	231	67.2	24.0	5.3	3.5
5th	11687	267	64.9	25.5	5.6	4.0
6th	5138	113	56.0	27.9	7.1	9.0
Total	25475	611	63.9	25.5	5.8	4.9

3.43 - Do you think you will ever drink wine coolers?

<i>Grade Level</i>	<i>N of Valid</i>	<i>N of Miss</i>	<i>Never</i>	<i>Maybe</i>	<i>Yes, I Will</i>	<i>Already Have</i>
4th	8632	249	72.7	19.8	4.4	3.2
5th	11651	303	64.9	24.8	5.5	4.7
6th	5139	112	50.6	30.1	8.6	10.7
Total	25422	664	64.7	24.2	5.7	5.4

3.44 - Do you think you will ever drink liquor?

<i>Grade Level</i>	<i>N of Valid</i>	<i>N of Miss</i>	<i>Never</i>	<i>Maybe</i>	<i>Yes, I Will</i>	<i>Already Have</i>
4th	8638	243	88.3	9.1	1.5	1.1
5th	11650	304	83.2	12.8	2.4	1.7
6th	5133	118	73.3	17.4	3.5	5.8
Total	25421	665	82.9	12.5	2.3	2.3

3.45 - Do you think you will ever smoke marijuana?

<i>Grade Level</i>	<i>N of Valid</i>	<i>N of Miss</i>	<i>Never</i>	<i>Maybe</i>	<i>Yes, I Will</i>	<i>Already Have</i>
4th	8645	236	97.8	1.6	0.3	0.3
5th	11689	265	97.2	1.9	0.3	0.7
6th	5145	106	92.5	3.9	0.8	2.8
Total	25479	607	96.4	2.2	0.4	1.0

3.46 - Do you think you will ever sniff glue, gas, etc.?

<i>Grade Level</i>	<i>N of Valid</i>	<i>N of Miss</i>	<i>Never</i>	<i>Maybe</i>	<i>Yes, I Will</i>	<i>Already Have</i>
4th	8617	264	93.0	3.8	0.4	2.8
5th	11675	279	93.8	3.0	0.4	2.9
6th	5128	123	91.8	3.2	0.5	4.5
Total	25420	666	93.1	3.3	0.4	3.1

3.47 - Do you think you will ever use cocaine/crack?

<i>Grade Level</i>	<i>N of Valid</i>	<i>N of Miss</i>	<i>Never</i>	<i>Maybe</i>	<i>Yes, I Will</i>	<i>Already Have</i>
4th	8634	247	98.4	1.1	0.3	0.2
5th	11655	299	98.4	1.2	0.2	0.2
6th	5110	141	96.9	2.1	0.5	0.6
Total	25399	687	98.1	1.3	0.3	0.3

3.48 - Do you think you will ever use other drugs?

<i>Grade Level</i>	<i>N of Valid</i>	<i>N of Miss</i>	<i>Never</i>	<i>Maybe</i>	<i>Yes, I Will</i>	<i>Already Have</i>
4th	8635	246	95.4	3.6	0.5	0.6
5th	11655	299	96.0	3.2	0.4	0.5
6th	5117	134	93.8	4.0	0.9	1.3
Total	25407	679	95.3	3.5	0.5	0.7

3.7. How Easy Is It For Kids Your Age To Get

3.49 - How easy is it to get cigarettes?

<i>Grade Level</i>	<i>N of Valid</i>	<i>N of Miss</i>	<i>Cannot Get</i>	<i>Hard To Get</i>	<i>Easy To Get</i>
4th	8664	217	53.9	22.5	23.6
5th	11637	317	38.9	26.7	34.3
6th	5129	122	24.2	24.1	51.7
Total	25430	656	41.1	24.8	34.2

3.50 - How easy is it to get chewing tobacco, snuff?

<i>Grade Level</i>	<i>N of Valid</i>	<i>N of Miss</i>	<i>Cannot Get</i>	<i>Hard To Get</i>	<i>Easy To Get</i>
4th	8601	280	63.1	23.3	13.6
5th	11555	399	50.7	29.8	19.5
6th	5094	157	35.8	32.9	31.3
Total	25250	836	51.9	28.2	19.9

3.51 - How easy is it to get beer?

<i>Grade Level</i>	<i>N of Valid</i>	<i>N of Miss</i>	<i>Cannot Get</i>	<i>Hard To Get</i>	<i>Easy To Get</i>
4th	8605	276	53.2	22.2	24.6
5th	11579	375	41.6	25.9	32.5
6th	5099	152	27.7	25.9	46.4
Total	25283	803	42.7	24.6	32.6

3.52 - How easy is it to get wine coolers?

<i>Grade Level</i>	<i>N of Valid</i>	<i>N of Miss</i>	<i>Cannot Get</i>	<i>Hard To Get</i>	<i>Easy To Get</i>
4th	8584	297	58.1	23.3	18.6
5th	11505	449	45.9	27.6	26.4
6th	5068	183	30.2	27.7	42.1
Total	25157	929	46.9	26.1	26.9

3.53 - How easy is it to get liquor?

<i>Grade Level</i>	<i>N of Valid</i>	<i>N of Miss</i>	<i>Cannot Get</i>	<i>Hard To Get</i>	<i>Easy To Get</i>
4th	8569	312	64.5	22.7	12.9
5th	11519	435	52.2	28.6	19.2
6th	5078	173	36.7	31.5	31.8
Total	25166	920	53.2	27.2	19.6

3.54 - How easy is it to get marijuana?

<i>Grade Level</i>	<i>N of Valid</i>	<i>N of Miss</i>	<i>Cannot Get</i>	<i>Hard To Get</i>	<i>Easy To Get</i>
4th	8528	353	70.2	19.1	10.7
5th	11518	436	60.3	25.2	14.4
6th	5081	170	45.8	30.1	24.0
Total	25127	959	60.8	24.1	15.1

3.8. While At School Have You

3.55 - While at school have you smoked cigarettes?

<i>Grade Level</i>	<i>N of Valid</i>	<i>N of Miss</i>	<i>No</i>	<i>One Time</i>	<i>Two or More</i>
4th	8741	140	98.8	0.8	0.4
5th	11762	192	98.6	1.0	0.5
6th	5196	55	97.1	1.6	1.3
Total	25699	387	98.3	1.0	0.6

3.56 - While at school have you drunk beer, wine coolers or liquor?

<i>Grade Level</i>	<i>N of Valid</i>	<i>N of Miss</i>	<i>No</i>	<i>One Time</i>	<i>Two or More</i>
4th	8711	170	98.2	1.3	0.5
5th	11736	218	98.7	1.0	0.3
6th	5182	69	97.4	1.6	0.9
Total	25629	457	98.3	1.2	0.5

3.57 - While at school have you smoked marijuana?

<i>Grade Level</i>	<i>N of Valid</i>	<i>N of Miss</i>	<i>No</i>	<i>One Time</i>	<i>Two or More</i>
4th	8689	192	99.6	0.2	0.2
5th	11719	235	99.5	0.3	0.2
6th	5180	71	99.0	0.4	0.6
Total	25588	498	99.4	0.3	0.3

3.58 - While at school have you sniffed glue, gas, etc.?

<i>Grade Level</i>	<i>N of Valid</i>	<i>N of Miss</i>	<i>No</i>	<i>One Time</i>	<i>Two or More</i>
4th	8660	221	93.0	4.8	2.1
5th	11693	261	93.4	4.5	2.1
6th	5170	81	91.3	5.5	3.2
Total	25523	563	92.8	4.8	2.3

3.59 - While at school have you been afraid a student will hurt you?

<i>Grade Level</i>	<i>N of Valid</i>	<i>N of Miss</i>	<i>No</i>	<i>One Time</i>	<i>Two or More</i>
4th	8683	198	71.9	16.3	11.8
5th	11718	236	74.0	15.7	10.3
6th	5177	74	74.3	15.7	10.0
Total	25578	508	73.3	15.9	10.7

3.60 - While at school have you been threatened by a student?

<i>Grade Level</i>	<i>N of Valid</i>	<i>N of Miss</i>	<i>No</i>	<i>One Time</i>	<i>Two or More</i>
4th	8660	221	67.0	16.7	16.3
5th	11717	237	64.4	18.8	16.8
6th	5177	74	60.5	20.1	19.4
Total	25554	532	64.5	18.4	17.2

3.61 - While at school have you been hurt by a student?

<i>Grade Level</i>	<i>N of Valid</i>	<i>N of Miss</i>	<i>No</i>	<i>One Time</i>	<i>Two or More</i>
4th	8668	213	73.1	15.8	11.2
5th	11707	247	75.2	14.6	10.2
6th	5171	80	77.9	13.0	9.2
Total	25546	540	75.0	14.7	10.3

3.62 - While at school have you been hurt by an adult?

<i>Grade Level</i>	<i>N of Valid</i>	<i>N of Miss</i>	<i>No</i>	<i>One Time</i>	<i>Two or More</i>
4th	8657	224	92.5	4.1	3.3
5th	11691	263	93.9	3.4	2.7
6th	5170	81	93.1	4.0	2.9
Total	25518	568	93.3	3.7	3.0

3.9. While *Not At School* Have You**3.63 - While *not at school* have you smoked cigarettes?**

<i>Grade Level</i>	<i>N of Valid</i>	<i>N of Miss</i>	<i>No</i>	<i>One Time</i>	<i>Two or More</i>
4th	8736	145	92.6	5.0	2.4
5th	11790	164	88.5	6.6	4.9
6th	5180	71	79.2	9.5	11.3
Total	25706	380	88.0	6.7	5.3

3.64 - While *not at school* have you drunk beer, wine coolers or liquor?

<i>Grade Level</i>	<i>N of Valid</i>	<i>N of Miss</i>	<i>No</i>	<i>One Time</i>	<i>Two or More</i>
4th	8711	170	88.8	7.4	3.7
5th	11762	192	84.3	10.1	5.6
6th	5167	84	73.5	13.2	13.4
Total	25640	446	83.7	9.8	6.5

3.65 - While *not at school* have you smoked marijuana?

<i>Grade Level</i>	<i>N of Valid</i>	<i>N of Miss</i>	<i>No</i>	<i>One Time</i>	<i>Two or More</i>
4th	8694	187	99.2	0.4	0.3
5th	11751	203	98.7	0.6	0.7
6th	5167	84	95.8	1.6	2.6
Total	25612	474	98.3	0.7	0.9

3.66 - While *not at school* have you sniffed glue, gas, etc.?

<i>Grade Level</i>	<i>N of Valid</i>	<i>N of Miss</i>	<i>No</i>	<i>One Time</i>	<i>Two or More</i>
4th	8681	200	94.1	3.8	2.1
5th	11734	220	94.2	3.2	2.5
6th	5159	92	92.1	4.1	3.8
Total	25574	512	93.7	3.6	2.6

3.67 - While *not at school* have you been afraid a student will hurt you?

<i>Grade Level</i>	<i>N of Valid</i>	<i>N of Miss</i>	<i>No</i>	<i>One Time</i>	<i>Two or More</i>
4th	8680	201	80.0	11.9	8.1
5th	11730	224	82.4	10.8	6.8
6th	5163	88	82.4	10.2	7.5
Total	25573	513	81.6	11.0	7.4

3.68 - While *not* at school have you been threatened by a student?

<i>Grade Level</i>	<i>N of Valid</i>	<i>N of Miss</i>	<i>No</i>	<i>One Time</i>	<i>Two or More</i>
4th	8676	205	76.8	12.3	10.9
5th	11749	205	77.1	12.5	10.4
6th	5165	86	73.2	13.7	13.1
Total	25590	496	76.2	12.6	11.1

3.69 - While *not* at school have you been hurt by a student?

<i>Grade Level</i>	<i>N of Valid</i>	<i>N of Miss</i>	<i>No</i>	<i>One Time</i>	<i>Two or More</i>
4th	8682	199	80.0	10.9	9.1
5th	11726	228	83.4	9.1	7.5
6th	5164	87	83.6	9.4	7.0
Total	25572	514	82.3	9.7	8.0

3.70 - While *not* at school have you been hurt by an adult?

<i>Grade Level</i>	<i>N of Valid</i>	<i>N of Miss</i>	<i>No</i>	<i>One Time</i>	<i>Two or More</i>
4th	8619	262	86.7	6.8	6.5
5th	11683	271	89.3	5.1	5.5
6th	5161	90	88.0	5.6	6.4
Total	25463	623	88.2	5.8	6.0

3.10. Is It OK For Kids My Age To

3.71 - Is it OK for kids my age to smoke cigarettes?

<i>Grade Level</i>	<i>N of Valid</i>	<i>N of Miss</i>	<i>No</i>	<i>Yes</i>
4th	8772	109	97.8	2.2
5th	11814	140	97.1	2.9
6th	5197	54	93.4	6.6
Total	25783	303	96.6	3.4

3.72 - Is it OK for kids my age to drink beer?

<i>Grade Level</i>	<i>N of Valid</i>	<i>N of Miss</i>	<i>No</i>	<i>Yes</i>
4th	8767	114	96.2	3.8
5th	11811	143	96.1	3.9
6th	5184	67	92.8	7.2
Total	25762	324	95.5	4.5

3.73 - Is it OK for kids my age to drink wine coolers?

<i>Grade Level</i>	<i>N of Valid</i>	<i>N of Miss</i>	<i>No</i>	<i>Yes</i>
4th	8748	133	94.7	5.3
5th	11784	170	93.6	6.4
6th	5176	75	87.4	12.6
Total	25708	378	92.7	7.3

3.74 - Is it OK for kids my age to drink liquor?

<i>Grade Level</i>	<i>N of Valid</i>	<i>N of Miss</i>	<i>No</i>	<i>Yes</i>
4th	8748	133	98.4	1.6
5th	11792	162	98.2	1.8
6th	5181	70	95.2	4.8
Total	25721	365	97.6	2.4

3.75 - Is it OK for kids my age to smoke marijuana?

<i>Grade Level</i>	<i>N of Valid</i>	<i>N of Miss</i>	<i>No</i>	<i>Yes</i>
4th	8746	135	99.0	1.0
5th	11800	154	98.8	1.2
6th	5186	65	96.8	3.2
Total	25732	354	98.4	1.6

3.76 - Is it OK for kids my age to steal something if you need it?

<i>Grade Level</i>	<i>N of Valid</i>	<i>N of Miss</i>	<i>No</i>	<i>Yes</i>
4th	8743	138	96.9	3.1
5th	11794	160	96.0	4.0
6th	5178	73	93.7	6.3
Total	25715	371	95.8	4.2

3.77 - Is it OK for kids my age to sell drugs if you need the money?

<i>Grade Level</i>	<i>N of Valid</i>	<i>N of Miss</i>	<i>No</i>	<i>Yes</i>
4th	8746	135	98.1	1.9
5th	11791	163	97.9	2.1
6th	5183	68	96.1	3.9
Total	25720	366	97.6	2.4

3.78 - Is it OK for kids my age to carry a gun for protection?

<i>Grade Level</i>	<i>N of Valid</i>	<i>N of Miss</i>	<i>No</i>	<i>Yes</i>
4th	8724	157	95.6	4.4
5th	11757	197	94.3	5.7
6th	5167	84	90.7	9.3
Total	25648	438	94.0	6.0

3.79 - Is it OK for kids my age to take what you want, even if it means hurting someone?

<i>Grade Level</i>	<i>N of Valid</i>	<i>N of Miss</i>	<i>No</i>	<i>Yes</i>
4th	8747	134	97.9	2.1
5th	11796	158	97.9	2.1
6th	5178	73	96.4	3.6
Total	25721	365	97.6	2.4

3.80 - Is it OK for kids my age to beat up another student if it is a fair fight?

<i>Grade Level</i>	<i>N of Valid</i>	<i>N of Miss</i>	<i>No</i>	<i>Yes</i>
4th	8716	165	85.5	14.5
5th	11763	191	82.2	17.8
6th	5167	84	73.5	26.5
Total	25646	440	81.6	18.4

3.11. Frequency of Use

3.81 - Frequency of Use -- Cigarettes

<i>Grade Level</i>	<i>N of Valid</i>	<i>N of Miss</i>	<i>Weekly Use</i>	<i>Monthly Use</i>	<i>Annual Use</i>
4th	8804	77	0.8	1.6	4.1
5th	11869	85	1.2	2.8	7.0
6th	5226	25	3.2	7.0	14.8
Total	25899	187	1.5	3.3	7.6

3.82 - Frequency of Use -- Chewing Tobacco, Snuff

<i>Grade Level</i>	<i>N of Valid</i>	<i>N of Miss</i>	<i>Weekly Use</i>	<i>Monthly Use</i>	<i>Annual Use</i>
4th	8782	99	0.5	1.0	2.0
5th	11869	85	0.5	1.1	2.4
6th	5217	34	0.7	1.5	4.0
Total	25868	218	0.5	1.1	2.6

3.83 - Frequency of Use -- Beer

<i>Grade Level</i>	<i>N of Valid</i>	<i>N of Miss</i>	<i>Weekly Use</i>	<i>Monthly Use</i>	<i>Annual Use</i>
4th	8789	92	0.7	2.1	7.7
5th	11840	114	0.7	2.2	8.2
6th	5206	45	1.3	4.7	15.0
Total	25835	251	0.8	2.7	9.4

3.84 - Frequency of Use -- Wine Coolers

<i>Grade Level</i>	<i>N of Valid</i>	<i>N of Miss</i>	<i>Weekly Use</i>	<i>Monthly Use</i>	<i>Annual Use</i>
4th	8772	109	0.8	2.2	6.6
5th	11832	122	0.8	2.5	9.5
6th	5197	54	1.7	5.4	18.4
Total	25801	285	1.0	3.0	10.3

3.85 - Frequency of Use -- Liquor

<i>Grade Level</i>	<i>N of Valid</i>	<i>N of Miss</i>	<i>Weekly Use</i>	<i>Monthly Use</i>	<i>Annual Use</i>
4th	8768	113	0.3	0.7	2.4
5th	11843	111	0.3	0.8	3.7
6th	5207	44	0.9	3.0	8.9
Total	25818	268	0.4	1.2	4.3

3.86 - Frequency of Use -- Marijuana

<i>Grade Level</i>	<i>N of Valid</i>	<i>N of Miss</i>	<i>Weekly Use</i>	<i>Monthly Use</i>	<i>Annual Use</i>
4th	8765	116	0.2	0.4	0.8
5th	11831	123	0.3	0.6	1.2
6th	5206	45	0.7	1.7	3.7
Total	25802	284	0.3	0.8	1.6

3.87 - Frequency of Use -- Glue, Gas, etc.

<i>Grade Level</i>	<i>N of Valid</i>	<i>N of Miss</i>	<i>Weekly Use</i>	<i>Monthly Use</i>	<i>Annual Use</i>
4th	8751	130	0.9	2.2	6.3
5th	11819	135	0.9	2.3	6.0
6th	5209	42	1.0	2.7	7.3
Total	25779	307	1.0	2.4	6.4

3.88 - Frequency of Use -- Other Drugs

<i>Grade Level</i>	<i>N of Valid</i>	<i>N of Miss</i>	<i>Weekly Use</i>	<i>Monthly Use</i>	<i>Annual Use</i>
4th	8763	118	0.4	0.8	1.5
5th	11827	127	0.3	0.6	1.3
6th	5205	46	0.7	1.4	2.7
Total	25795	291	0.4	0.8	1.7

TABLE OF CONTENTS

1 INTRODUCTION	1
1.1 Tobacco Use	2
1.2 Alcohol Use	2
1.3 Marijuana Use	2
1.4 Inhalant Use	3
1.5 What You Can Do As A Parent, Teacher, Or Concerned Citizen?	3
2 STANDARD GRAPHICS	4
2.1 Frequency Of Use	5
2.2 Harmful To Health	6
2.3 How Easy Is It For Kids Your Age To Get	7
2.4 How Many Of Your Friends	8
3 PERCENTAGE TABLES	10
3.1 Personal & Family Information	11
3.2 Student Characteristics	12
3.3 Within The Past Year How Often Have You Used	15
3.4 How Many Of Your Friends	17
3.5 Harmful To Health	19
3.6 Do You Think You Will Ever Use	21
3.7 How Easy Is It For Kids Your Age To Get	23
3.8 While At School Have You	25
3.9 While <i>Not</i> At School Have You	27
3.10 Is It OK For Kids My Age To	29
3.11 Frequency of Use	31

LIST OF TABLES

3.1 - Sex	11
3.2 - Ethnic Origin	11
3.3 - Age	11
3.4 - I make good grades.	12
3.5 - I get into trouble at school.	12
3.6 - I go to church or synagogue.	12
3.7 - I talk to my parents about my problems.	12
3.8 - My parents talk to me about the dangers of using drugs.	12
3.9 - My teachers talk to me about the dangers of using drugs.	13
3.10 - My parents make me follow certain rules.	13
3.11 - I have to be home at a certain time.	13
3.12 - I go to parties.	13
3.13 - I am alone at home.	13
3.14 - The kids at school like me.	14
3.15 - I feel lonely.	14
3.16 - Within the past year how often have you smoked cigarettes?	15
3.17 - Within the past year how often have you chewed tobacco, snuff?	15
3.18 - Within the past year how often have you drunk beer?	15
3.19 - Within the past year how often have you drunk wine coolers?	15
3.20 - Within the past year how often have you drunk liquor?	15
3.21 - Within the past year how often have you smoked marijuana?	16
3.22 - Within the past year how often have you sniffed glue, gas, etc.?	16
3.23 - Within the past year how often have you used other drugs?	16
3.24 - How many of your friends smoked cigarettes?	17
3.25 - How many of your friends chewed tobacco, snuff?	17
3.26 - How many of your friends drank beer?	17
3.27 - How many of your friends drank wine coolers?	17
3.28 - How many of your friends drank liquor?	17
3.29 - How many of your friends smoked marijuana?	18
3.30 - How many of your friends sniffed glue, gas, etc.?	18
3.31 - How many of your friends used other drugs?	18
3.32 - Do you feel that using cigarettes is harmful to your health?	19
3.33 - Do you feel that using chewing tobacco or snuff is harmful to your health?	19
3.34 - Do you feel that using beer is harmful to your health?	19
3.35 - Do you feel that using wine coolers is harmful to your health?	19
3.36 - Do you feel that using liquor is harmful to your health?	19
3.37 - Do you feel that using marijuana is harmful to your health?	20
3.38 - Do you feel that using glue, gas, etc is harmful to your health?	20
3.39 - Do you feel that using cocaine/crack is harmful to your health?	20
3.40 - Do you think you will ever smoke cigarettes?	21

3.41 - Do you think you will ever chew tobacco, snuff?	21
3.42 - Do you think you will ever drink beer?	21
3.43 - Do you think you will ever drink wine coolers?	21
3.44 - Do you think you will ever drink liquor?	21
3.45 - Do you think you will ever smoke marijuana?	22
3.46 - Do you think you will ever sniff glue, gas, etc.?	22
3.47 - Do you think you will ever use cocaine/crack?	22
3.48 - Do you think you will ever use other drugs?	22
3.49 - How easy is it to get cigarettes?	23
3.50 - How easy is it to get chewing tobacco, snuff?	23
3.51 - How easy is it to get beer?	23
3.52 - How easy is it to get wine coolers?	23
3.53 - How easy is it to get liquor?	23
3.54 - How easy is it to get marijuana?	24
3.55 - While <i>at</i> school have you smoked cigarettes?	25
3.56 - While <i>at</i> school have you drunk beer, wine coolers or liquor?	25
3.57 - While <i>at</i> school have you smoked marijuana?	25
3.58 - While <i>at</i> school have you sniffed glue, gas, etc.?	25
3.59 - While <i>at</i> school have you been afraid a student will hurt you?	25
3.60 - While <i>at</i> school have you been threatened by a student?	26
3.61 - While <i>at</i> school have you been hurt by a student?	26
3.62 - While <i>at</i> school have you been hurt by an adult?	26
3.63 - While <i>not</i> at school have you smoked cigarettes?	27
3.64 - While <i>not</i> at school have you drunk beer, wine coolers or liquor?	27
3.65 - While <i>not</i> at school have you smoked marijuana?	27
3.66 - While <i>not</i> at school have you sniffed glue, gas, etc.?	27
3.67 - While <i>not</i> at school have you been afraid a student will hurt you?	27
3.68 - While <i>not</i> at school have you been threatened by a student?	28
3.69 - While <i>not</i> at school have you been hurt by a student?	28
3.70 - While <i>not</i> at school have you been hurt by an adult?	28
3.71 - Is it OK for kids my age to smoke cigarettes?	29
3.72 - Is it OK for kids my age to drink beer?	29
3.73 - Is it OK for kids my age to drink wine coolers?	29
3.74 - Is it OK for kids my age to drink liquor?	29
3.75 - Is it OK for kids my age to smoke marijuana?	29
3.76 - Is it OK for kids my age to steal something if you need it?	30
3.77 - Is it OK for kids my age to sell drugs if you need the money?	30
3.78 - Is it OK for kids my age to carry a gun for protection?	30
3.79 - Is it OK for kids my age to take what you want, even if it means hurting some- one?	30
3.80 - Is it OK for kids my age to beat up another student if it is a fair fight?	30
3.81 - Frequency of Use -- Cigarettes	31
3.82 - Frequency of Use -- Chewing Tobacco, Snuff	31
3.83 - Frequency of Use -- Beer	31
3.84 - Frequency of Use -- Wine Coolers	31
3.85 - Frequency of Use -- Liquor	31

List of Tables

3.86 - Frequency of Use -- Marijuana	32
3.87 - Frequency of Use -- Glue, Gas, etc.	32
3.88 - Frequency of Use -- Other Drugs	32

LIST OF FIGURES

2.1 - % Students Who Use Gateway Drugs	5
2.2 - % Students Who Use Illicit Drugs	5
2.3 - Harmful to Health -- Cigarettes, Tobacco, Beer, Wine Coolers	6
2.4 - Harmful to Health -- Liquor, Marijuana, Glue, Gas, Cocaine/Crack	6
2.5 - How Easy Is It For Kids Your Age To Get Cigarettes, Tobacco, Beer	7
2.6 - How Easy Is It For Kids Your Age To Get Wine Coolers, Liquor, Marijuana	7
2.7 - How Many Of Your Friends Used Cigarettes, Chewing Tobacco, Beer	8
2.8 - How Many Of Your Friends Used Wine Coolers, Liquor, Marijuana	8
2.9 - How Many Of Your Friends Used Glue, Gas, Other Drugs	8