

***PRIDE
QUESTIONNAIRE
REPORT***

1998-99 National Summary
Grades 4 through 6

UE980001-279

Mon Aug 19 11:34:17 CDT 2002



CHAPTER 1

INTRODUCTION

The following summary, graphs, and tables are compiled from data collected in your school(s) using the PRIDE Questionnaire. These data reflect prevalence and patterns of local drug and alcohol use. It is important that this report be utilized as part of your drug abuse awareness and prevention program. We strongly suggest that you

COPY THE FOLLOWING PAGES

and

DISTRIBUTE THEM TO YOUR FACULTY.

The pages highlight and graphically summarize drug use by students in your school.

- Number of 4th grade students surveyed: 9575
- Number of 5th grade students surveyed: 13910
- Number of 6th grade students surveyed: 7175
- Number of students surveyed: 30660

1.1. Tobacco Use

3.3 percent of your 4th grade students said they smoked cigarettes within the past year (1997-98 PRIDE National Avg. = 4.1%). **4.3** percent of your 5th grade students said they smoked cigarettes within the past year (1997-98 PRIDE National Avg. = 7.0%). **12.0** percent of your 6th grade students said they smoked cigarettes within the past year (1997-98 PRIDE National Avg. = 14.8%).

1.4 percent of your 4th grade students said they used chewing tobacco or snuff within the past year (1997-98 PRIDE National Avg. = 2.0%). **1.4** percent of your 5th grade students said they used chewing tobacco or snuff within the past year (1997-98 PRIDE National Avg. = 2.4%). **2.8** percent of your 6th grade students said they used chewing tobacco or snuff within the past year (1997-98 PRIDE National Avg. = 4.0%).

1.2. Alcohol Use

6.3 percent of your 4th grade students said they drank beer within the past year (1997-98 PRIDE National Avg. = 7.7%). **8.2** percent of your 5th grade students said they drank beer within the past year (1997-98 PRIDE National Avg. = 8.2%). **11.9** percent of your 6th grade students said they drank beer within the past year (1997-98 PRIDE National Avg. = 15.0%).

5.9 percent of your 4th grade students said they drank wine coolers within the past year (1997-98 PRIDE National Avg. = 6.6%). **8.6** percent of your 5th grade students said they drank wine coolers within the past year (1997-98 PRIDE National Avg. = 9.5%). **14.3** percent of your 6th grade students said they drank wine coolers within the past year (1997-98 PRIDE National Avg. = 18.4%).

1.9 percent of your 4th grade students said they drank liquor within the past year (1997-98 PRIDE National Avg. = 2.4%). **3.5** percent of your 5th grade students said they drank liquor within the past year (1997-98 PRIDE National Avg. = 3.7%). **6.9** percent of your 6th grade students said they drank liquor within the past year (1997-98 PRIDE National Avg. = 8.9%).

NOTE: Beer and wine coolers are the favorite intoxicants of American students.

1.3. Marijuana Use

3.1 percent of your 6th grade students said they smoked marijuana within the past year (1997-98 PRIDE National Avg. = 3.7%).

1.4. Inhalant Use

6.4 percent of your 4th grade students said they sniffed glue, gas, etc. within the past year (1997-98 PRIDE National Avg. = 6.3%). **5.9** percent of your 5th grade students said they sniffed

Local percentages below 1% are not reported.

glue, gas, etc. within the past year (1997-98 PRIDE National Avg. = 6.0%). **5.9** percent of your 6th grade students said they sniffed glue, gas, etc. within the past year (1997-98 PRIDE National Avg. = 7.3%).

1.5. What You Can Do As A Parent, Teacher, Or Concerned Citizen?

The drug merchandisers thrive on the ignorance, apathy, and irresponsibility of ordinary citizens.

YOU CAN MAKE A DIFFERENCE!

Here's how:

- (1) Educate yourself and your family about the health hazards of drugs.
- (2) Insist on no illegal drug use by youngsters. This includes alcohol, tobacco and marijuana.
- (3) Support drug education in the schools, workplace, churches and civic associations.
- (4) Rebuild understanding and respect for the laws concerning alcohol, marijuana, cocaine and other drugs.
- (5) Recognize the danger of the illegal consumer as well as the illegal supplier of alcohol and other drugs.
- (6) Support law-enforcement efforts at home and abroad.
- (7) Write letters, telephone and visit those members of the publishing, merchandising and media world who glamorize, trivialize or subsidize the drug culture.

CHAPTER 2

STANDARD GRAPHICS

The following graphs will assist you in understanding the relationship of student behavior to alcohol and other drug usage. You are encouraged to make overheads or slides from the graphs for presentations to school faculty, parents, media, and other audiences in the community.

The *Frequency of Use* graphs show the percent of students at each grade level who report any use of the various drugs. The graphs are divided into *Gateway* and *Illicit* drug categories.

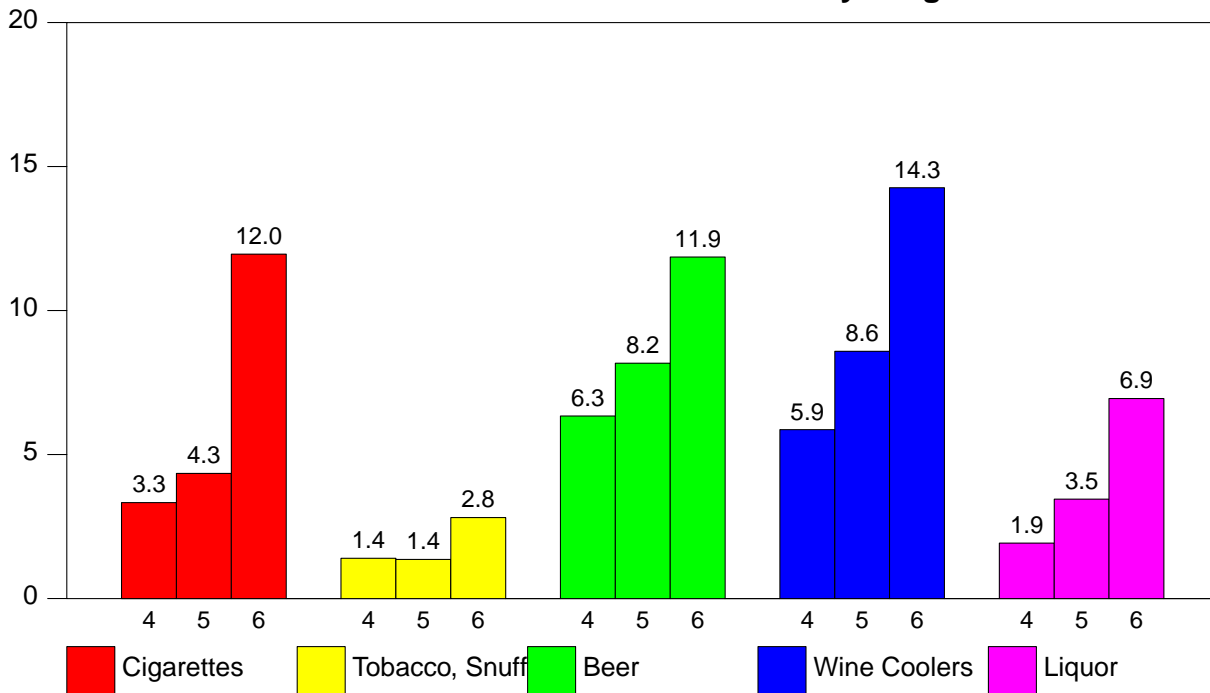
The *Perceived Harm* of alcohol and other drugs will assist with understanding how the false assumptions concerning harm are related to drug use. When drugs are perceived as harmless, the probability of use increases. These graphs show the percent of students who marked *Yes* or *A Lot* on the question *Do You Think The Following Are Harmful To Your Health*.

Research indicates that easy access, *Availability*, to drug increases the probability of use. Availability of alcohol and other drugs normally increases at higher grade levels. These graphs show the percent of students who marked *Easy To Get* on the question *How Easy Is It For Kids Your Age To Get*.

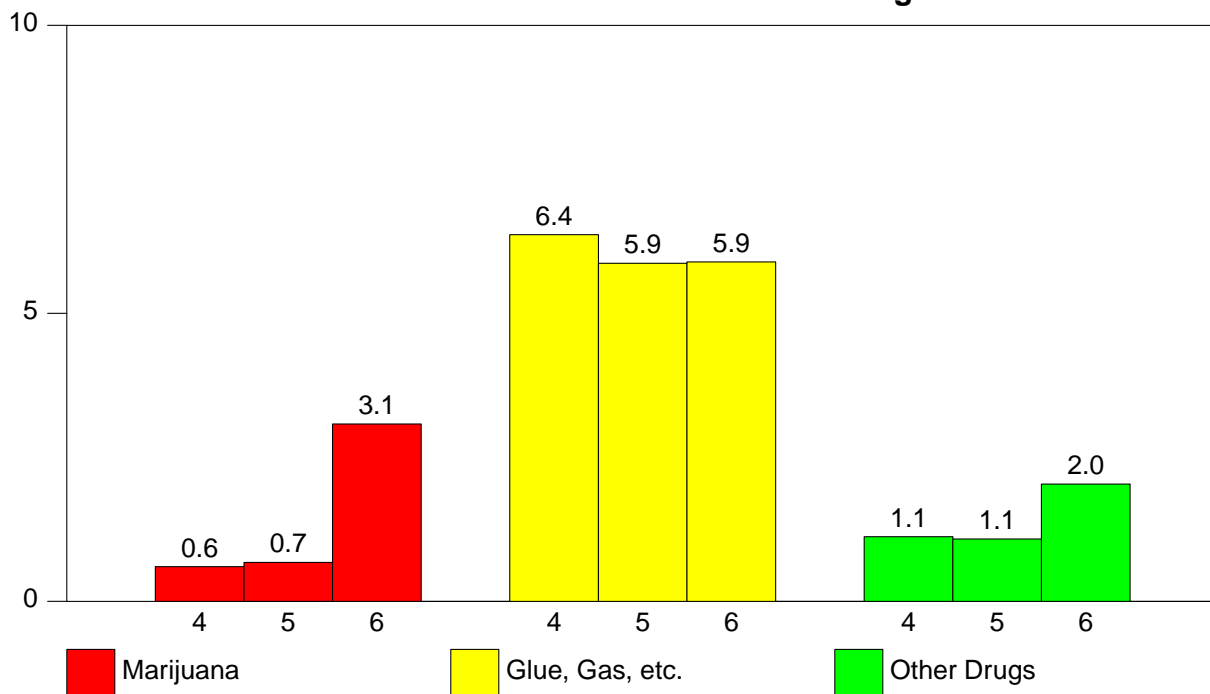
Data collected in past years using the **PRIDE Surveys Questionnaire** indicate a high correlation between friends use of drugs and an individual students use of drugs (i.e. a student who reports use of drugs by friends is more likely to use drugs). These graphs show the percent of students who marked *A Lot* on the question *How Many Of Your Friends Use*.

2.1. Frequency Of Use

2.1 - % Students Who Use Gateway Drugs

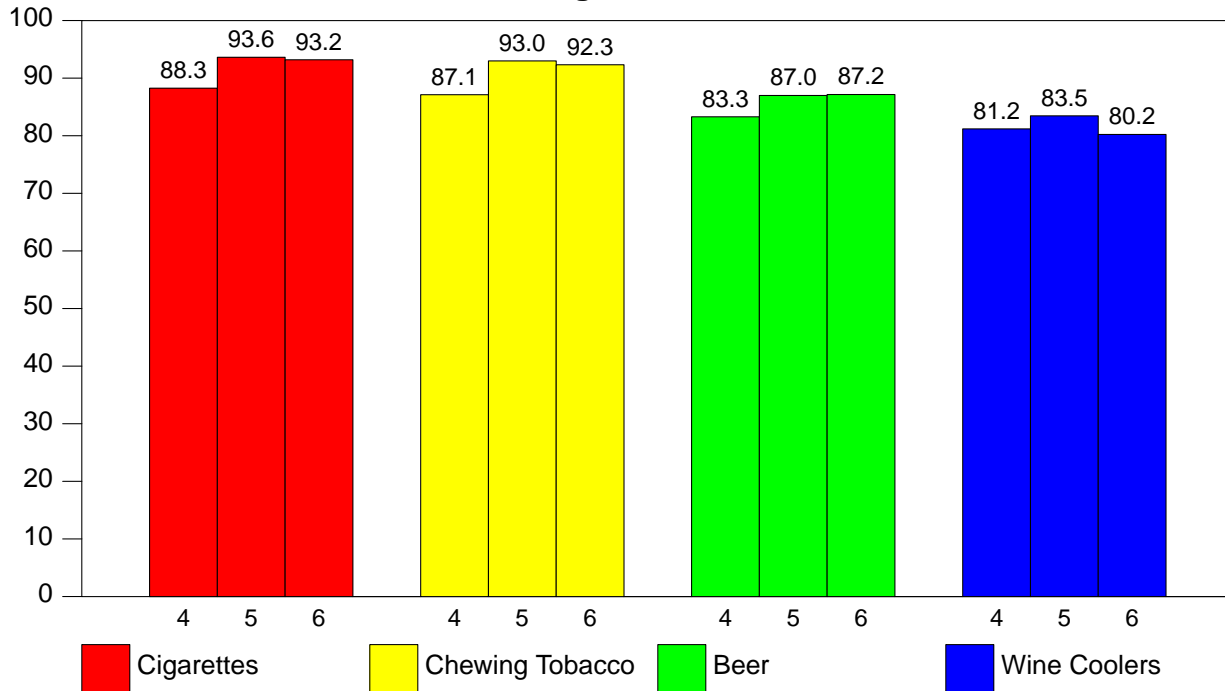


2.2 - % Students Who Use Illicit Drugs

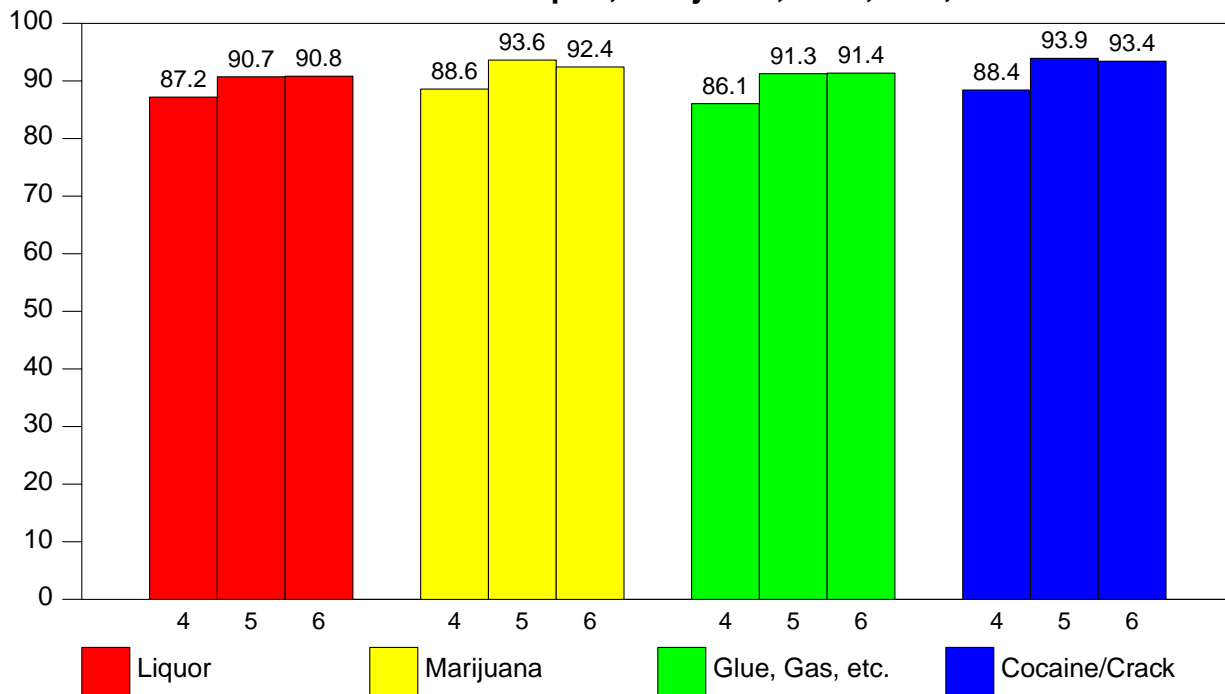


2.2. Harmful To Health

2.3 - Harmful to Health -- Cigarettes, Tobacco, Beer, Wine Coolers

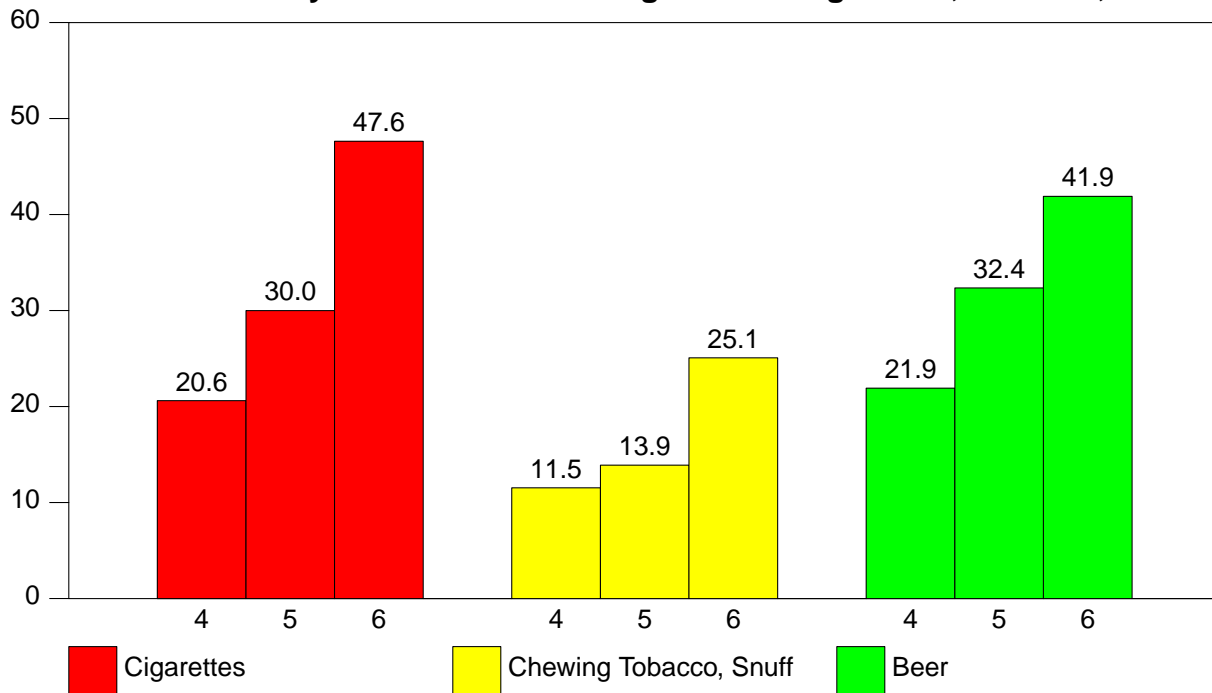


2.4 - Harmful to Health -- Liquor, Marijuana, Glue, Gas, Cocaine/Crack

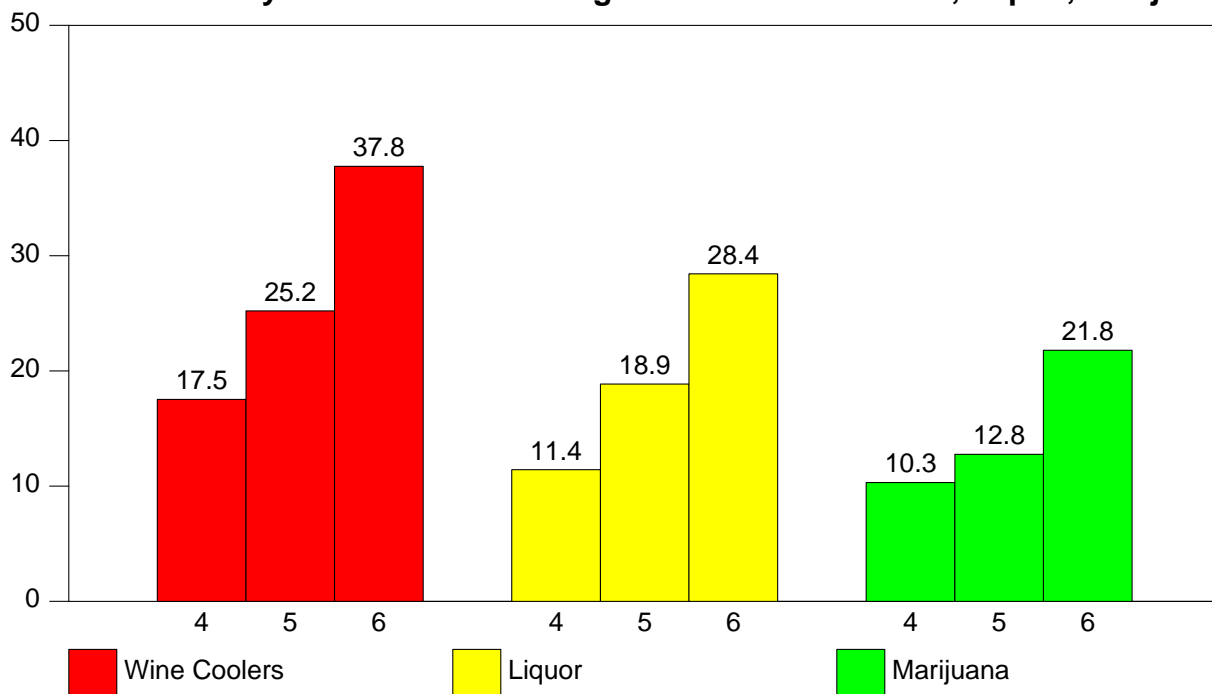


2.3. How Easy Is It For Kids Your Age To Get

2.5 - How Easy Is It For Kids Your Age To Get Cigarettes, Tobacco, Beer

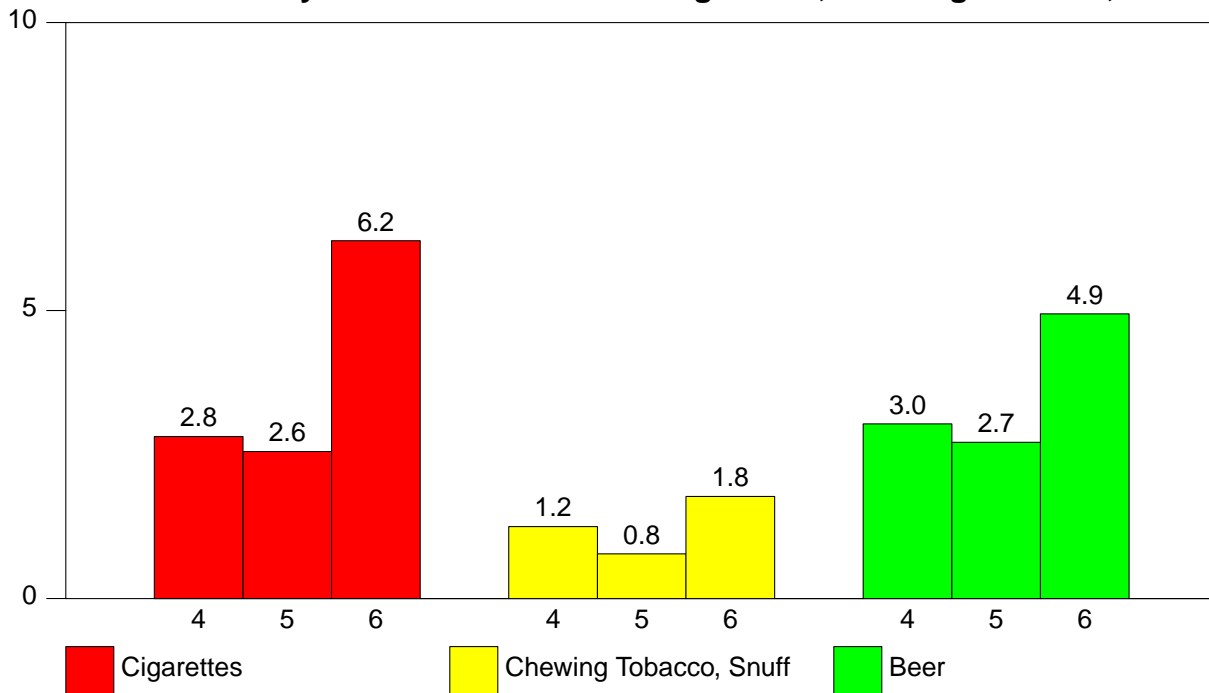


2.6 - How Easy Is It For Kids Your Age To Get Wine Coolers, Liquor, Marijuana

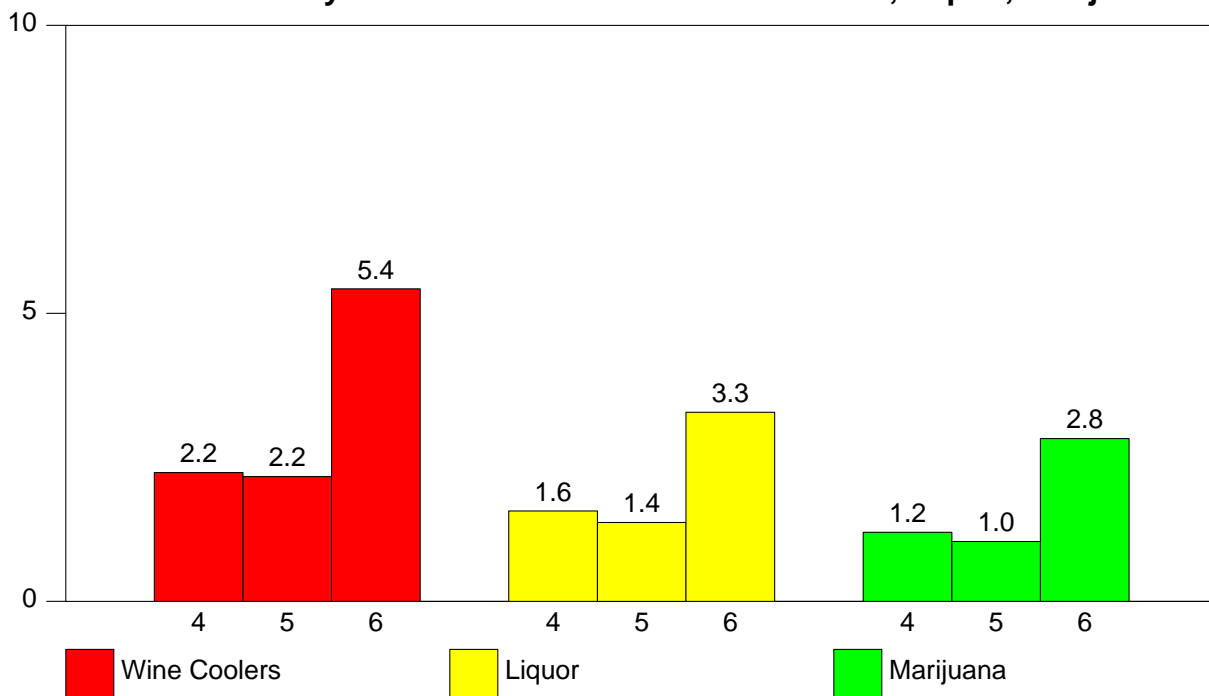


2.4. How Many Of Your Friends

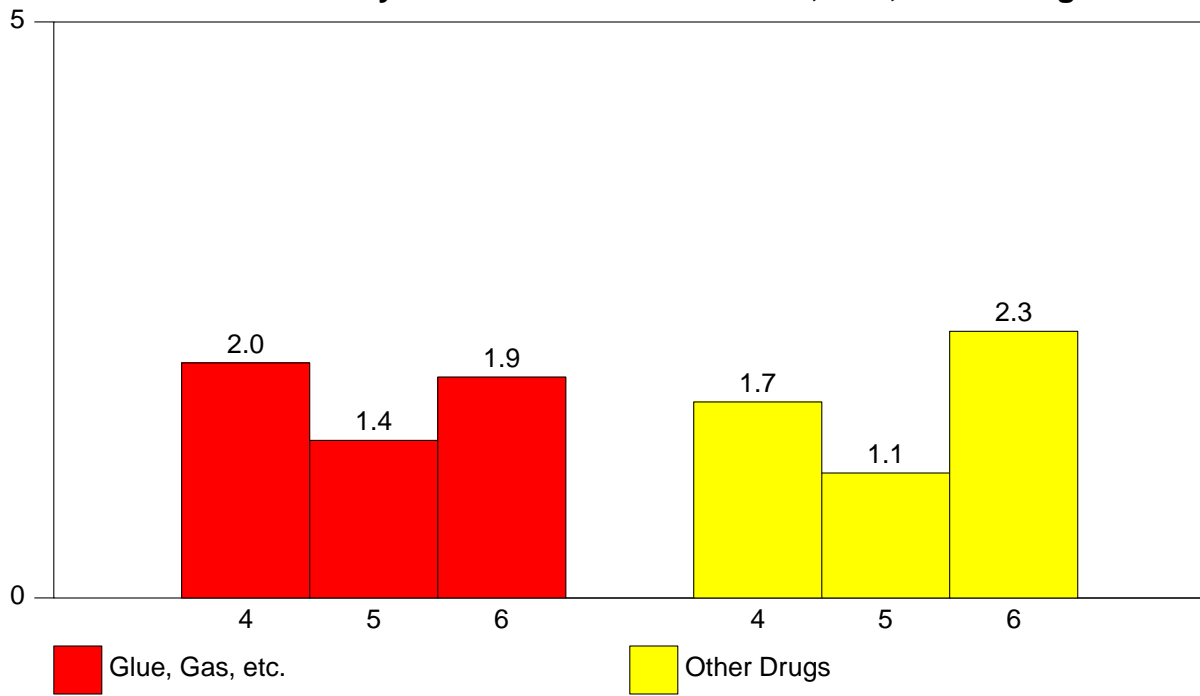
2.7 - How Many Of Your Friends Used Cigarettes, Chewing Tobacco, Beer



2.8 - How Many Of Your Friends Used Wine Coolers, Liquor, Marijuana



2.9 - How Many Of Your Friends Used Glue, Gas, Other Drugs



CHAPTER 3

PERCENTAGE TABLES

This chapter contains your school survey results in tabular form. Each table corresponds to an item on the questionnaire. The tables contain percentage data by grade level, (grades 4 through 6), and *Total*. The *N of Valid* column contains the number of students responding to the item and the *N of Missing* column contains the number of students not responding to the item. The remaining columns contain the percentages of students responding to the particular response categories.

The percentage tables of the report appear in the same order as corresponding questions on the questionnaire. The Table of Contents contains the percentage tables by section and gives the page number where each section is located. The List of Tables contains the location of each individual table.

The last section of tables presents the frequency of drug use data with the categories *collapsed* as follows:

- Weekly Use - *1-7 Times A Week*
- Monthly Use - *1-2 Times A Month + 1-7 Times A Week*
- Annual Use - *1-6 Times A Year + 1-2 Times A Month
+ 1-7 Times A Week*

3.1. Personal & Family Information

3.1 - Sex

<i>Grade Level</i>	<i>N of Valid</i>	<i>N of Miss</i>	<i>Male</i>	<i>Female</i>
4th	9559	16	51.0	49.0
5th	13885	25	49.6	50.4
6th	7160	15	49.4	50.6
Total	30604	56	50.0	50.0

3.2 - Ethnic Origin

<i>Grade Level</i>	<i>N of Valid</i>	<i>N of Miss</i>	<i>White</i>	<i>Black</i>	<i>Hispanic</i>	<i>Asian</i>	<i>Native American</i>
4th	9155	144	66.7	24.9	5.7	0.8	1.8
5th	13312	214	70.8	17.7	8.1	2.4	1.0
6th	6897	102	73.3	21.7	2.9	1.2	0.9
Total	29364	460	70.1	20.9	6.1	1.6	1.2

3.3 - Age

<i>Grade Level</i>	<i>N of Valid</i>	<i>N of Miss</i>	8	9	10	11	12	13	14+
4th	9513	62	1.2	47.0	44.2	6.8	0.7	0.0	0.0
5th	13846	64	0.0	1.0	47.9	45.2	5.5	0.4	0.0
6th	7134	41	0.0	0.0	0.5	44.2	46.3	8.3	0.7
Total	30493	167	0.4	15.1	35.7	33.0	13.6	2.1	0.2

3.2. Student Characteristics

3.4 - I make good grades.

<i>Grade Level</i>	<i>N of Valid</i>	<i>N of Miss</i>	<i>Never</i>	<i>Sometimes</i>	<i>A Lot</i>
4th	9509	66	1.4	56.1	42.4
5th	13845	65	0.8	50.9	48.3
6th	7134	41	1.2	52.7	46.1
Total	30488	172	1.1	53.0	46.0

3.5 - I get into trouble at school.

<i>Grade Level</i>	<i>N of Valid</i>	<i>N of Miss</i>	<i>Never</i>	<i>Sometimes</i>	<i>A Lot</i>
4th	9450	125	38.0	58.0	4.0
5th	13777	133	40.5	56.3	3.3
6th	7111	64	38.5	56.4	5.1
Total	30338	322	39.2	56.8	3.9

3.6 - I go to church or synagogue.

<i>Grade Level</i>	<i>N of Valid</i>	<i>N of Miss</i>	<i>Never</i>	<i>Sometimes</i>	<i>A Lot</i>
4th	9400	175	18.1	37.9	43.9
5th	13718	192	16.5	40.1	43.4
6th	7098	77	15.2	40.3	44.5
Total	30216	444	16.7	39.5	43.8

3.7 - I talk to my parents about my problems.

<i>Grade Level</i>	<i>N of Valid</i>	<i>N of Miss</i>	<i>Never</i>	<i>Sometimes</i>	<i>A Lot</i>
4th	9480	95	10.2	46.3	43.5
5th	13830	80	10.4	51.3	38.2
6th	7129	46	15.6	54.8	29.6
Total	30439	221	11.6	50.6	37.9

3.8 - My parents talk to me about the dangers of using drugs.

<i>Grade Level</i>	<i>N of Valid</i>	<i>N of Miss</i>	<i>Never</i>	<i>Sometimes</i>	<i>A Lot</i>
4th	9416	159	8.7	31.4	59.8
5th	13727	183	10.3	38.9	50.8
6th	7103	72	12.5	40.9	46.7
Total	30246	414	10.3	37.0	52.6

3.9 - My teachers talk to me about the dangers of using drugs.

<i>Grade Level</i>	<i>N of Valid</i>	<i>N of Miss</i>	<i>Never</i>	<i>Sometimes</i>	<i>A Lot</i>
4th	9445	130	6.5	41.0	52.5
5th	13768	142	5.3	40.0	54.7
6th	7107	68	8.7	44.9	46.4
Total	30320	340	6.5	41.4	52.1

3.10 - My parents make me follow certain rules.

<i>Grade Level</i>	<i>N of Valid</i>	<i>N of Miss</i>	<i>Never</i>	<i>Sometimes</i>	<i>A Lot</i>
4th	9476	99	3.0	28.6	68.5
5th	13792	118	2.5	32.8	64.8
6th	7125	50	2.9	33.2	63.8
Total	30393	267	2.7	31.6	65.7

3.11 - I have to be home at a certain time.

<i>Grade Level</i>	<i>N of Valid</i>	<i>N of Miss</i>	<i>Never</i>	<i>Sometimes</i>	<i>A Lot</i>
4th	9385	190	15.4	45.2	39.4
5th	13664	246	12.5	47.5	40.0
6th	7044	131	11.1	48.0	40.9
Total	30093	567	13.1	46.9	40.0

3.12 - I go to parties.

<i>Grade Level</i>	<i>N of Valid</i>	<i>N of Miss</i>	<i>Never</i>	<i>Sometimes</i>	<i>A Lot</i>
4th	9365	210	9.5	58.4	32.1
5th	13717	193	7.2	59.3	33.5
6th	7073	102	10.0	60.9	29.2
Total	30155	505	8.5	59.4	32.1

3.13 - I am alone at home.

<i>Grade Level</i>	<i>N of Valid</i>	<i>N of Miss</i>	<i>Never</i>	<i>Sometimes</i>	<i>A Lot</i>
4th	9384	191	45.5	46.8	7.7
5th	13671	239	33.0	56.9	10.0
6th	7064	111	22.2	63.3	14.5
Total	30119	541	34.4	55.2	10.4

3.14 - The kids at school like me.

<i>Grade Level</i>	<i>N of Valid</i>	<i>N of Miss</i>	<i>Never</i>	<i>Sometimes</i>	<i>A Lot</i>
4th	9375	200	4.7	38.9	56.4
5th	13691	219	3.3	36.9	59.7
6th	7063	112	3.2	36.4	60.4
Total	30129	531	3.7	37.4	58.9

3.15 - I feel lonely.

<i>Grade Level</i>	<i>N of Valid</i>	<i>N of Miss</i>	<i>Never</i>	<i>Sometimes</i>	<i>A Lot</i>
4th	9422	153	45.7	43.0	11.4
5th	13719	191	49.7	42.2	8.0
6th	7072	103	51.4	41.1	7.5
Total	30213	447	48.9	42.2	8.9

3.3. Within The Past Year How Often Have You Used

3.16 - Within the past year how often have you smoked cigarettes?

<i>Grade Level</i>	<i>N of Valid</i>	<i>N of Miss</i>	<i>Did Not Use</i>	<i>1-6/yr</i>	<i>1-2/mo</i>	<i>1-7/wk</i>
4th	9508	67	96.7	1.6	0.9	0.8
5th	13813	97	95.7	2.7	1.0	0.7
6th	7123	52	88.0	6.6	2.6	2.8
Total	30444	216	94.2	3.3	1.3	1.2

3.17 - Within the past year how often have you chewed tobacco, snuff?

<i>Grade Level</i>	<i>N of Valid</i>	<i>N of Miss</i>	<i>Did Not Use</i>	<i>1-6/yr</i>	<i>1-2/mo</i>	<i>1-7/wk</i>
4th	9480	95	98.6	0.7	0.4	0.3
5th	13793	117	98.6	0.8	0.3	0.2
6th	7106	69	97.2	1.7	0.7	0.5
Total	30379	281	98.3	1.0	0.4	0.3

3.18 - Within the past year how often have you drunk beer?

<i>Grade Level</i>	<i>N of Valid</i>	<i>N of Miss</i>	<i>Did Not Use</i>	<i>1-6/yr</i>	<i>1-2/mo</i>	<i>1-7/wk</i>
4th	9448	127	93.7	4.1	1.3	0.9
5th	13751	159	91.8	6.3	1.3	0.6
6th	7100	75	88.1	7.9	2.7	1.2
Total	30299	361	91.5	6.0	1.6	0.8

3.19 - Within the past year how often have you drunk wine coolers?

<i>Grade Level</i>	<i>N of Valid</i>	<i>N of Miss</i>	<i>Did Not Use</i>	<i>1-6/yr</i>	<i>1-2/mo</i>	<i>1-7/wk</i>
4th	9438	137	94.1	3.7	1.3	0.9
5th	13739	171	91.4	6.4	1.5	0.6
6th	7078	97	85.7	9.4	3.3	1.5
Total	30255	405	90.9	6.3	1.9	0.9

3.20 - Within the past year how often have you drunk liquor?

<i>Grade Level</i>	<i>N of Valid</i>	<i>N of Miss</i>	<i>Did Not Use</i>	<i>1-6/yr</i>	<i>1-2/mo</i>	<i>1-7/wk</i>
4th	9435	140	98.1	1.3	0.3	0.3
5th	13749	161	96.5	2.7	0.5	0.3
6th	7082	93	93.1	4.8	1.4	0.8
Total	30266	394	96.2	2.7	0.7	0.4

3.21 - Within the past year how often have you smoked marijuana?

<i>Grade Level</i>	<i>N of Valid</i>	<i>N of Miss</i>	<i>Did Not Use</i>	<i>1-6/yr</i>	<i>1-2/mo</i>	<i>1-7/wk</i>
4th	9443	132	99.4	0.2	0.2	0.2
5th	13742	168	99.3	0.4	0.2	0.1
6th	7078	97	96.9	1.4	0.8	0.9
Total	30263	397	98.8	0.6	0.3	0.3

3.22 - Within the past year how often have you sniffed glue, gas, etc.?

<i>Grade Level</i>	<i>N of Valid</i>	<i>N of Miss</i>	<i>Did Not Use</i>	<i>1-6/yr</i>	<i>1-2/mo</i>	<i>1-7/wk</i>
4th	9410	165	93.6	3.4	1.6	1.4
5th	13717	193	94.1	3.7	1.3	0.8
6th	7076	99	94.1	3.5	1.4	1.0
Total	30203	457	94.0	3.6	1.4	1.0

3.23 - Within the past year how often have you used other drugs?

<i>Grade Level</i>	<i>N of Valid</i>	<i>N of Miss</i>	<i>Did Not Use</i>	<i>1-6/yr</i>	<i>1-2/mo</i>	<i>1-7/wk</i>
4th	9437	138	98.9	0.5	0.2	0.4
5th	13735	175	98.9	0.6	0.3	0.2
6th	7065	110	98.0	1.0	0.5	0.6
Total	30237	423	98.7	0.7	0.3	0.3

3.4. How Many Of Your Friends

3.24 - How many of your friends smoked cigarettes?

<i>Grade Level</i>	<i>N of Valid</i>	<i>N of Miss</i>	<i>None</i>	<i>A Few</i>	<i>A Lot</i>
4th	9419	156	82.2	15.0	2.8
5th	13738	172	79.3	18.1	2.6
6th	7049	126	62.6	31.1	6.2
Total	30206	454	76.3	20.2	3.5

3.25 - How many of your friends chewed tobacco, snuff?

<i>Grade Level</i>	<i>N of Valid</i>	<i>N of Miss</i>	<i>None</i>	<i>A Few</i>	<i>A Lot</i>
4th	9360	215	93.6	5.1	1.2
5th	13643	267	94.1	5.1	0.8
6th	6998	177	88.9	9.3	1.8
Total	30001	659	92.7	6.1	1.2

3.26 - How many of your friends drank beer?

<i>Grade Level</i>	<i>N of Valid</i>	<i>N of Miss</i>	<i>None</i>	<i>A Few</i>	<i>A Lot</i>
4th	9358	217	84.1	12.9	3.0
5th	13606	304	82.4	14.9	2.7
6th	6981	194	73.7	21.3	4.9
Total	29945	715	80.9	15.8	3.3

3.27 - How many of your friends drank wine coolers?

<i>Grade Level</i>	<i>N of Valid</i>	<i>N of Miss</i>	<i>None</i>	<i>A Few</i>	<i>A Lot</i>
4th	9295	280	88.1	9.6	2.2
5th	13610	300	85.6	12.2	2.2
6th	6965	210	75.9	18.7	5.4
Total	29870	790	84.1	12.9	2.9

3.28 - How many of your friends drank liquor?

<i>Grade Level</i>	<i>N of Valid</i>	<i>N of Miss</i>	<i>None</i>	<i>A Few</i>	<i>A Lot</i>
4th	9302	273	93.8	4.7	1.6
5th	13586	324	92.0	6.6	1.4
6th	6942	233	85.1	11.6	3.3
Total	29830	830	91.0	7.2	1.9

3.29 - How many of your friends smoked marijuana?

<i>Grade Level</i>	<i>N of Valid</i>	<i>N of Miss</i>	<i>None</i>	<i>A Few</i>	<i>A Lot</i>
4th	9260	315	95.7	3.1	1.2
5th	13543	367	95.5	3.5	1.0
6th	6935	240	88.4	8.8	2.8
Total	29738	922	93.9	4.6	1.5

3.30 - How many of your friends sniffed glue, gas, etc.?

<i>Grade Level</i>	<i>N of Valid</i>	<i>N of Miss</i>	<i>None</i>	<i>A Few</i>	<i>A Lot</i>
4th	9214	361	89.3	8.7	2.0
5th	13522	388	89.9	8.7	1.4
6th	6934	241	88.0	10.1	1.9
Total	29670	990	89.3	9.0	1.7

3.31 - How many of your friends used other drugs?

<i>Grade Level</i>	<i>N of Valid</i>	<i>N of Miss</i>	<i>None</i>	<i>A Few</i>	<i>A Lot</i>
4th	9230	345	94.0	4.3	1.7
5th	13542	368	94.6	4.3	1.1
6th	6912	263	90.8	6.8	2.3
Total	29684	976	93.5	4.9	1.6

3.5. Harmful To Health

3.32 - Do you feel that using cigarettes is harmful to your health?

<i>Grade Level</i>	<i>N of Valid</i>	<i>N of Miss</i>	<i>No</i>	<i>Yes</i>	<i>A Lot</i>
4th	9372	203	11.7	45.0	43.2
5th	13706	204	6.4	48.9	44.8
6th	7061	114	6.8	53.9	39.3
Total	30139	521	8.1	48.8	43.0

3.33 - Do you feel that using chewing tobacco or snuff is harmful to your health?

<i>Grade Level</i>	<i>N of Valid</i>	<i>N of Miss</i>	<i>No</i>	<i>Yes</i>	<i>A Lot</i>
4th	9293	282	12.9	43.2	43.9
5th	13643	267	7.0	44.6	48.4
6th	7022	153	7.7	50.8	41.6
Total	29958	702	9.0	45.6	45.4

3.34 - Do you feel that using beer is harmful to your health?

<i>Grade Level</i>	<i>N of Valid</i>	<i>N of Miss</i>	<i>No</i>	<i>Yes</i>	<i>A Lot</i>
4th	9250	325	16.7	51.1	32.2
5th	13587	323	13.0	57.3	29.7
6th	7002	173	12.8	57.5	29.6
Total	29839	821	14.1	55.4	30.4

3.35 - Do you feel that using wine coolers is harmful to your health?

<i>Grade Level</i>	<i>N of Valid</i>	<i>N of Miss</i>	<i>No</i>	<i>Yes</i>	<i>A Lot</i>
4th	9158	417	18.8	49.3	31.9
5th	13480	430	16.5	55.7	27.8
6th	6946	229	19.8	55.2	25.0
Total	29584	1076	18.0	53.6	28.4

3.36 - Do you feel that using liquor is harmful to your health?

<i>Grade Level</i>	<i>N of Valid</i>	<i>N of Miss</i>	<i>No</i>	<i>Yes</i>	<i>A Lot</i>
4th	9176	399	12.8	44.2	43.0
5th	13495	415	9.3	51.1	39.6
6th	6956	219	9.2	52.9	38.0
Total	29627	1033	10.3	49.4	40.3

3.37 - Do you feel that using marijuana is harmful to your health?

<i>Grade Level</i>	<i>N of Valid</i>	<i>N of Miss</i>	<i>No</i>	<i>Yes</i>	<i>A Lot</i>
4th	9206	369	11.4	30.2	58.4
5th	13545	365	6.4	29.0	64.6
6th	6984	191	7.6	31.9	60.6
Total	29735	925	8.2	30.1	61.7

3.38 - Do you feel that using glue, gas, etc is harmful to your health?

<i>Grade Level</i>	<i>N of Valid</i>	<i>N of Miss</i>	<i>No</i>	<i>Yes</i>	<i>A Lot</i>
4th	9149	426	13.9	43.3	42.7
5th	13518	392	8.7	43.0	48.3
6th	6955	220	8.6	42.4	49.0
Total	29622	1038	10.3	42.9	46.7

3.39 - Do you feel that using cocaine/crack is harmful to your health?

<i>Grade Level</i>	<i>N of Valid</i>	<i>N of Miss</i>	<i>No</i>	<i>Yes</i>	<i>A Lot</i>
4th	9112	463	11.6	28.9	59.6
5th	13523	387	6.1	27.5	66.5
6th	6973	202	6.6	29.1	64.3
Total	29608	1052	7.9	28.3	63.8

3.6. Do You Think You Will Ever Use

3.40 - Do you think you will ever smoke cigarettes?

<i>Grade Level</i>	<i>N of Valid</i>	<i>N of Miss</i>	<i>Never</i>	<i>Maybe</i>	<i>Yes, I Will</i>	<i>Already Have</i>
4th	9424	151	81.5	14.5	1.1	3.0
5th	13748	162	81.9	14.1	0.9	3.1
6th	7036	139	72.7	17.3	1.4	8.5
Total	30208	452	79.6	15.0	1.1	4.3

3.41 - Do you think you will ever chew tobacco, snuff?

<i>Grade Level</i>	<i>N of Valid</i>	<i>N of Miss</i>	<i>Never</i>	<i>Maybe</i>	<i>Yes, I Will</i>	<i>Already Have</i>
4th	9373	202	94.9	3.7	0.4	1.0
5th	13697	213	95.7	3.2	0.4	0.7
6th	7012	163	93.1	4.4	0.3	2.1
Total	30082	578	94.9	3.6	0.4	1.1

3.42 - Do you think you will ever drink beer?

<i>Grade Level</i>	<i>N of Valid</i>	<i>N of Miss</i>	<i>Never</i>	<i>Maybe</i>	<i>Yes, I Will</i>	<i>Already Have</i>
4th	9335	240	71.9	20.6	3.7	3.7
5th	13652	258	63.5	27.2	5.8	3.5
6th	6997	178	61.8	26.0	5.8	6.5
Total	29984	676	65.7	24.9	5.1	4.3

3.43 - Do you think you will ever drink wine coolers?

<i>Grade Level</i>	<i>N of Valid</i>	<i>N of Miss</i>	<i>Never</i>	<i>Maybe</i>	<i>Yes, I Will</i>	<i>Already Have</i>
4th	9330	245	74.8	18.1	3.7	3.4
5th	13597	313	65.5	25.4	5.0	4.0
6th	6996	179	57.3	27.3	7.1	8.3
Total	29923	737	66.5	23.6	5.1	4.8

3.44 - Do you think you will ever drink liquor?

<i>Grade Level</i>	<i>N of Valid</i>	<i>N of Miss</i>	<i>Never</i>	<i>Maybe</i>	<i>Yes, I Will</i>	<i>Already Have</i>
4th	9322	253	90.1	7.6	1.3	1.0
5th	13631	279	81.8	14.3	2.6	1.3
6th	6978	197	78.3	14.6	3.3	3.7
Total	29931	729	83.6	12.3	2.4	1.8

3.45 - Do you think you will ever smoke marijuana?

<i>Grade Level</i>	<i>N of Valid</i>	<i>N of Miss</i>	<i>Never</i>	<i>Maybe</i>	<i>Yes, I Will</i>	<i>Already Have</i>
4th	9316	259	97.6	1.8	0.3	0.3
5th	13636	274	98.0	1.4	0.2	0.5
6th	7000	175	93.5	3.4	0.7	2.4
Total	29952	708	96.8	2.0	0.3	0.9

3.46 - Do you think you will ever sniff glue, gas, etc.?

<i>Grade Level</i>	<i>N of Valid</i>	<i>N of Miss</i>	<i>Never</i>	<i>Maybe</i>	<i>Yes, I Will</i>	<i>Already Have</i>
4th	9280	295	93.0	3.5	0.4	3.1
5th	13596	314	94.5	2.9	0.3	2.3
6th	6986	189	94.0	2.9	0.3	2.8
Total	29862	798	93.9	3.1	0.3	2.7

3.47 - Do you think you will ever use cocaine/crack?

<i>Grade Level</i>	<i>N of Valid</i>	<i>N of Miss</i>	<i>Never</i>	<i>Maybe</i>	<i>Yes, I Will</i>	<i>Already Have</i>
4th	9252	323	98.1	1.4	0.2	0.2
5th	13588	322	98.8	0.9	0.1	0.1
6th	6990	185	97.8	1.4	0.3	0.6
Total	29830	830	98.4	1.2	0.2	0.3

3.48 - Do you think you will ever use other drugs?

<i>Grade Level</i>	<i>N of Valid</i>	<i>N of Miss</i>	<i>Never</i>	<i>Maybe</i>	<i>Yes, I Will</i>	<i>Already Have</i>
4th	9257	318	95.5	3.5	0.4	0.6
5th	13559	351	96.7	2.6	0.3	0.4
6th	6975	200	95.7	2.9	0.4	1.0
Total	29791	869	96.1	2.9	0.4	0.6

3.7. How Easy Is It For Kids Your Age To Get

3.49 - How easy is it to get cigarettes?

<i>Grade Level</i>	<i>N of Valid</i>	<i>N of Miss</i>	<i>Cannot Get</i>	<i>Hard To Get</i>	<i>Easy To Get</i>
4th	9331	244	58.2	21.2	20.6
5th	13564	346	43.3	26.8	30.0
6th	6957	218	29.0	23.3	47.6
Total	29852	808	44.6	24.2	31.2

3.50 - How easy is it to get chewing tobacco, snuff?

<i>Grade Level</i>	<i>N of Valid</i>	<i>N of Miss</i>	<i>Cannot Get</i>	<i>Hard To Get</i>	<i>Easy To Get</i>
4th	9286	289	66.3	22.2	11.5
5th	13488	422	56.2	29.9	13.9
6th	6915	260	42.8	32.1	25.1
Total	29689	971	56.2	28.0	15.8

3.51 - How easy is it to get beer?

<i>Grade Level</i>	<i>N of Valid</i>	<i>N of Miss</i>	<i>Cannot Get</i>	<i>Hard To Get</i>	<i>Easy To Get</i>
4th	9291	284	57.2	20.8	21.9
5th	13490	420	41.9	25.7	32.4
6th	6913	262	32.7	25.4	41.9
Total	29694	966	44.6	24.1	31.3

3.52 - How easy is it to get wine coolers?

<i>Grade Level</i>	<i>N of Valid</i>	<i>N of Miss</i>	<i>Cannot Get</i>	<i>Hard To Get</i>	<i>Easy To Get</i>
4th	9233	342	61.2	21.2	17.5
5th	13416	494	47.5	27.3	25.2
6th	6884	291	35.2	27.0	37.8
Total	29533	1127	48.9	25.3	25.7

3.53 - How easy is it to get liquor?

<i>Grade Level</i>	<i>N of Valid</i>	<i>N of Miss</i>	<i>Cannot Get</i>	<i>Hard To Get</i>	<i>Easy To Get</i>
4th	9187	388	67.3	21.2	11.4
5th	13412	498	53.5	27.7	18.9
6th	6875	300	42.4	29.2	28.4
Total	29474	1186	55.2	26.0	18.8

3.54 - How easy is it to get marijuana?

<i>Grade Level</i>	<i>N of Valid</i>	<i>N of Miss</i>	<i>Cannot Get</i>	<i>Hard To Get</i>	<i>Easy To Get</i>
4th	9166	409	71.3	18.4	10.3
5th	13394	516	62.8	24.4	12.8
6th	6862	313	50.4	27.8	21.8
Total	29422	1238	62.5	23.3	14.1

3.8. While At School Have You

3.55 - While at school have you smoked cigarettes?

<i>Grade Level</i>	<i>N of Valid</i>	<i>N of Miss</i>	<i>No</i>	<i>One Time</i>	<i>Two or More</i>
4th	9407	168	98.7	0.9	0.5
5th	13732	178	98.9	0.7	0.4
6th	7054	121	96.9	1.7	1.4
Total	30193	467	98.4	1.0	0.7

3.56 - While at school have you drunk beer, wine coolers or liquor?

<i>Grade Level</i>	<i>N of Valid</i>	<i>N of Miss</i>	<i>No</i>	<i>One Time</i>	<i>Two or More</i>
4th	9376	199	98.4	1.0	0.6
5th	13705	205	98.6	0.9	0.5
6th	7043	132	97.7	1.4	0.9
Total	30124	536	98.3	1.1	0.6

3.57 - While at school have you smoked marijuana?

<i>Grade Level</i>	<i>N of Valid</i>	<i>N of Miss</i>	<i>No</i>	<i>One Time</i>	<i>Two or More</i>
4th	9350	225	99.5	0.2	0.2
5th	13691	219	99.7	0.2	0.1
6th	7028	147	98.8	0.5	0.6
Total	30069	591	99.4	0.3	0.3

3.58 - While at school have you sniffed glue, gas, etc.?

<i>Grade Level</i>	<i>N of Valid</i>	<i>N of Miss</i>	<i>No</i>	<i>One Time</i>	<i>Two or More</i>
4th	9326	249	93.3	4.5	2.2
5th	13633	277	93.9	4.2	1.9
6th	7015	160	93.8	4.0	2.2
Total	29974	686	93.7	4.3	2.0

3.59 - While at school have you been afraid a student will hurt you?

<i>Grade Level</i>	<i>N of Valid</i>	<i>N of Miss</i>	<i>No</i>	<i>One Time</i>	<i>Two or More</i>
4th	9342	233	71.7	16.8	11.5
5th	13648	262	73.1	16.6	10.3
6th	7027	148	73.8	16.2	10.0
Total	30017	643	72.8	16.6	10.6

3.60 - While at school have you been threatened by a student?

<i>Grade Level</i>	<i>N of Valid</i>	<i>N of Miss</i>	<i>No</i>	<i>One Time</i>	<i>Two or More</i>
4th	9322	253	65.8	17.8	16.4
5th	13631	279	65.3	18.3	16.4
6th	7028	147	61.5	20.3	18.2
Total	29981	679	64.6	18.6	16.8

3.61 - While at school have you been hurt by a student?

<i>Grade Level</i>	<i>N of Valid</i>	<i>N of Miss</i>	<i>No</i>	<i>One Time</i>	<i>Two or More</i>
4th	9339	236	72.6	15.5	11.9
5th	13644	266	74.8	15.4	9.8
6th	7036	139	78.7	12.8	8.6
Total	30019	641	75.0	14.8	10.2

3.62 - While at school have you been hurt by an adult?

<i>Grade Level</i>	<i>N of Valid</i>	<i>N of Miss</i>	<i>No</i>	<i>One Time</i>	<i>Two or More</i>
4th	9290	285	92.1	4.0	3.9
5th	13636	274	93.6	3.7	2.7
6th	7023	152	93.5	3.3	3.1
Total	29949	711	93.1	3.7	3.1

3.9. While *Not At School* Have You**3.63 - While *not at school* have you smoked cigarettes?**

<i>Grade Level</i>	<i>N of Valid</i>	<i>N of Miss</i>	<i>No</i>	<i>One Time</i>	<i>Two or More</i>
4th	9417	158	93.3	4.5	2.2
5th	13709	201	92.2	5.0	2.8
6th	7052	123	81.8	9.3	8.9
Total	30178	482	90.1	5.8	4.0

3.64 - While *not at school* have you drunk beer, wine coolers or liquor?

<i>Grade Level</i>	<i>N of Valid</i>	<i>N of Miss</i>	<i>No</i>	<i>One Time</i>	<i>Two or More</i>
4th	9391	184	89.0	7.8	3.3
5th	13676	234	85.6	9.3	5.1
6th	7033	142	78.3	11.8	9.9
Total	30100	560	84.9	9.4	5.7

3.65 - While *not at school* have you smoked marijuana?

<i>Grade Level</i>	<i>N of Valid</i>	<i>N of Miss</i>	<i>No</i>	<i>One Time</i>	<i>Two or More</i>
4th	9375	200	99.2	0.4	0.4
5th	13669	241	99.1	0.5	0.4
6th	7024	151	96.3	1.5	2.2
Total	30068	592	98.5	0.7	0.9

3.66 - While *not at school* have you sniffed glue, gas, etc.?

<i>Grade Level</i>	<i>N of Valid</i>	<i>N of Miss</i>	<i>No</i>	<i>One Time</i>	<i>Two or More</i>
4th	9345	230	93.6	4.0	2.4
5th	13634	276	94.7	3.3	2.0
6th	7018	157	94.3	3.0	2.7
Total	29997	663	94.3	3.5	2.3

3.67 - While *not at school* have you been afraid a student will hurt you?

<i>Grade Level</i>	<i>N of Valid</i>	<i>N of Miss</i>	<i>No</i>	<i>One Time</i>	<i>Two or More</i>
4th	9375	200	80.6	11.2	8.2
5th	13659	251	82.4	10.6	7.0
6th	7024	151	83.6	10.3	6.1
Total	30058	602	82.1	10.7	7.1

3.68 - While *not* at school have you been threatened by a student?

<i>Grade Level</i>	<i>N of Valid</i>	<i>N of Miss</i>	<i>No</i>	<i>One Time</i>	<i>Two or More</i>
4th	9374	201	76.3	12.5	11.3
5th	13646	264	77.4	12.2	10.4
6th	7016	159	76.8	12.3	10.9
Total	30036	624	76.9	12.3	10.8

3.69 - While *not* at school have you been hurt by a student?

<i>Grade Level</i>	<i>N of Valid</i>	<i>N of Miss</i>	<i>No</i>	<i>One Time</i>	<i>Two or More</i>
4th	9361	214	80.2	11.0	8.8
5th	13618	292	82.7	10.0	7.2
6th	7006	169	86.1	8.0	5.9
Total	29985	675	82.7	9.9	7.4

3.70 - While *not* at school have you been hurt by an adult?

<i>Grade Level</i>	<i>N of Valid</i>	<i>N of Miss</i>	<i>No</i>	<i>One Time</i>	<i>Two or More</i>
4th	9321	254	87.0	5.8	7.2
5th	13603	307	87.7	6.0	6.3
6th	7004	171	89.3	5.0	5.8
Total	29928	732	87.9	5.7	6.5

3.10. Is It OK For Kids My Age To

3.71 - Is it OK for kids my age to smoke cigarettes?

<i>Grade Level</i>	<i>N of Valid</i>	<i>N of Miss</i>	<i>No</i>	<i>Yes</i>
4th	9467	108	98.2	1.8
5th	13782	128	98.3	1.7
6th	7081	94	95.0	5.0
Total	30330	330	97.5	2.5

3.72 - Is it OK for kids my age to drink beer?

<i>Grade Level</i>	<i>N of Valid</i>	<i>N of Miss</i>	<i>No</i>	<i>Yes</i>
4th	9453	122	96.6	3.4
5th	13755	155	96.6	3.4
6th	7076	99	94.6	5.4
Total	30284	376	96.1	3.9

3.73 - Is it OK for kids my age to drink wine coolers?

<i>Grade Level</i>	<i>N of Valid</i>	<i>N of Miss</i>	<i>No</i>	<i>Yes</i>
4th	9420	155	95.1	4.9
5th	13711	199	94.1	5.9
6th	7050	125	90.5	9.5
Total	30181	479	93.6	6.4

3.74 - Is it OK for kids my age to drink liquor?

<i>Grade Level</i>	<i>N of Valid</i>	<i>N of Miss</i>	<i>No</i>	<i>Yes</i>
4th	9427	148	98.6	1.4
5th	13735	175	98.3	1.7
6th	7057	118	96.6	3.4
Total	30219	441	98.0	2.0

3.75 - Is it OK for kids my age to smoke marijuana?

<i>Grade Level</i>	<i>N of Valid</i>	<i>N of Miss</i>	<i>No</i>	<i>Yes</i>
4th	9432	143	99.1	0.9
5th	13741	169	99.1	0.9
6th	7060	115	97.5	2.5
Total	30233	427	98.7	1.3

3.76 - Is it OK for kids my age to steal something if you need it?

<i>Grade Level</i>	<i>N of Valid</i>	<i>N of Miss</i>	<i>No</i>	<i>Yes</i>
4th	9430	145	97.2	2.8
5th	13734	176	96.8	3.2
6th	7060	115	94.6	5.4
Total	30224	436	96.4	3.6

3.77 - Is it OK for kids my age to sell drugs if you need the money?

<i>Grade Level</i>	<i>N of Valid</i>	<i>N of Miss</i>	<i>No</i>	<i>Yes</i>
4th	9431	144	98.1	1.9
5th	13740	170	98.4	1.6
6th	7057	118	96.6	3.4
Total	30228	432	97.9	2.1

3.78 - Is it OK for kids my age to carry a gun for protection?

<i>Grade Level</i>	<i>N of Valid</i>	<i>N of Miss</i>	<i>No</i>	<i>Yes</i>
4th	9396	179	95.8	4.2
5th	13694	216	96.2	3.8
6th	7028	147	93.2	6.8
Total	30118	542	95.4	4.6

3.79 - Is it OK for kids my age to take what you want, even if it means hurting someone?

<i>Grade Level</i>	<i>N of Valid</i>	<i>N of Miss</i>	<i>No</i>	<i>Yes</i>
4th	9423	152	97.9	2.1
5th	13727	183	98.1	1.9
6th	7057	118	97.4	2.6
Total	30207	453	97.9	2.1

3.80 - Is it OK for kids my age to beat up another student if it is a fair fight?

<i>Grade Level</i>	<i>N of Valid</i>	<i>N of Miss</i>	<i>No</i>	<i>Yes</i>
4th	9390	185	86.2	13.8
5th	13694	216	84.3	15.7
6th	7021	154	78.7	21.3
Total	30105	555	83.6	16.4

3.11. Frequency of Use

3.81 - Frequency of Use -- Cigarettes

<i>Grade Level</i>	<i>N of Valid</i>	<i>N of Miss</i>	<i>Weekly Use</i>	<i>Monthly Use</i>	<i>Annual Use</i>
4th	9508	67	0.8	1.7	3.3
5th	13813	97	0.7	1.7	4.3
6th	7123	52	2.8	5.4	12.0
Total	30444	216	1.2	2.6	5.8

3.82 - Frequency of Use -- Chewing Tobacco, Snuff

<i>Grade Level</i>	<i>N of Valid</i>	<i>N of Miss</i>	<i>Weekly Use</i>	<i>Monthly Use</i>	<i>Annual Use</i>
4th	9480	95	0.3	0.7	1.4
5th	13793	117	0.2	0.5	1.4
6th	7106	69	0.5	1.2	2.8
Total	30379	281	0.3	0.7	1.7

3.83 - Frequency of Use -- Beer

<i>Grade Level</i>	<i>N of Valid</i>	<i>N of Miss</i>	<i>Weekly Use</i>	<i>Monthly Use</i>	<i>Annual Use</i>
4th	9448	127	0.9	2.2	6.3
5th	13751	159	0.6	1.8	8.2
6th	7100	75	1.2	3.9	11.9
Total	30299	361	0.8	2.4	8.5

3.84 - Frequency of Use -- Wine Coolers

<i>Grade Level</i>	<i>N of Valid</i>	<i>N of Miss</i>	<i>Weekly Use</i>	<i>Monthly Use</i>	<i>Annual Use</i>
4th	9438	137	0.9	2.2	5.9
5th	13739	171	0.6	2.2	8.6
6th	7078	97	1.5	4.8	14.3
Total	30255	405	0.9	2.8	9.1

3.85 - Frequency of Use -- Liquor

<i>Grade Level</i>	<i>N of Valid</i>	<i>N of Miss</i>	<i>Weekly Use</i>	<i>Monthly Use</i>	<i>Annual Use</i>
4th	9435	140	0.3	0.6	1.9
5th	13749	161	0.3	0.8	3.5
6th	7082	93	0.8	2.2	6.9
Total	30266	394	0.4	1.1	3.8

3.86 - Frequency of Use -- Marijuana

<i>Grade Level</i>	<i>N of Valid</i>	<i>N of Miss</i>	<i>Weekly Use</i>	<i>Monthly Use</i>	<i>Annual Use</i>
4th	9443	132	0.2	0.4	0.6
5th	13742	168	0.1	0.3	0.7
6th	7078	97	0.9	1.7	3.1
Total	30263	397	0.3	0.7	1.2

3.87 - Frequency of Use -- Glue, Gas, etc.

<i>Grade Level</i>	<i>N of Valid</i>	<i>N of Miss</i>	<i>Weekly Use</i>	<i>Monthly Use</i>	<i>Annual Use</i>
4th	9410	165	1.4	3.0	6.4
5th	13717	193	0.8	2.1	5.9
6th	7076	99	1.0	2.3	5.9
Total	30203	457	1.0	2.5	6.0

3.88 - Frequency of Use -- Other Drugs

<i>Grade Level</i>	<i>N of Valid</i>	<i>N of Miss</i>	<i>Weekly Use</i>	<i>Monthly Use</i>	<i>Annual Use</i>
4th	9437	138	0.4	0.6	1.1
5th	13735	175	0.2	0.5	1.1
6th	7065	110	0.6	1.0	2.0
Total	30237	423	0.3	0.7	1.3

TABLE OF CONTENTS

1 INTRODUCTION	1
1.1 Tobacco Use	2
1.2 Alcohol Use	2
1.3 Marijuana Use	2
1.4 Inhalant Use	2
1.5 What You Can Do As A Parent, Teacher, Or Concerned Citizen?	3
2 STANDARD GRAPHICS	4
2.1 Frequency Of Use	5
2.2 Harmful To Health	6
2.3 How Easy Is It For Kids Your Age To Get	7
2.4 How Many Of Your Friends	8
3 PERCENTAGE TABLES	10
3.1 Personal & Family Information	11
3.2 Student Characteristics	12
3.3 Within The Past Year How Often Have You Used	15
3.4 How Many Of Your Friends	17
3.5 Harmful To Health	19
3.6 Do You Think You Will Ever Use	21
3.7 How Easy Is It For Kids Your Age To Get	23
3.8 While At School Have You	25
3.9 While <i>Not</i> At School Have You	27
3.10 Is It OK For Kids My Age To	29
3.11 Frequency of Use	31

LIST OF TABLES

3.1 - Sex	11
3.2 - Ethnic Origin	11
3.3 - Age	11
3.4 - I make good grades.	12
3.5 - I get into trouble at school.	12
3.6 - I go to church or synagogue.	12
3.7 - I talk to my parents about my problems.	12
3.8 - My parents talk to me about the dangers of using drugs.	12
3.9 - My teachers talk to me about the dangers of using drugs.	13
3.10 - My parents make me follow certain rules.	13
3.11 - I have to be home at a certain time.	13
3.12 - I go to parties.	13
3.13 - I am alone at home.	13
3.14 - The kids at school like me.	14
3.15 - I feel lonely.	14
3.16 - Within the past year how often have you smoked cigarettes?	15
3.17 - Within the past year how often have you chewed tobacco, snuff?	15
3.18 - Within the past year how often have you drunk beer?	15
3.19 - Within the past year how often have you drunk wine coolers?	15
3.20 - Within the past year how often have you drunk liquor?	15
3.21 - Within the past year how often have you smoked marijuana?	16
3.22 - Within the past year how often have you sniffed glue, gas, etc.?	16
3.23 - Within the past year how often have you used other drugs?	16
3.24 - How many of your friends smoked cigarettes?	17
3.25 - How many of your friends chewed tobacco, snuff?	17
3.26 - How many of your friends drank beer?	17
3.27 - How many of your friends drank wine coolers?	17
3.28 - How many of your friends drank liquor?	17
3.29 - How many of your friends smoked marijuana?	18
3.30 - How many of your friends sniffed glue, gas, etc.?	18
3.31 - How many of your friends used other drugs?	18
3.32 - Do you feel that using cigarettes is harmful to your health?	19
3.33 - Do you feel that using chewing tobacco or snuff is harmful to your health?	19
3.34 - Do you feel that using beer is harmful to your health?	19
3.35 - Do you feel that using wine coolers is harmful to your health?	19
3.36 - Do you feel that using liquor is harmful to your health?	19
3.37 - Do you feel that using marijuana is harmful to your health?	20
3.38 - Do you feel that using glue, gas, etc is harmful to your health?	20
3.39 - Do you feel that using cocaine/crack is harmful to your health?	20
3.40 - Do you think you will ever smoke cigarettes?	21

3.41 - Do you think you will ever chew tobacco, snuff?	21
3.42 - Do you think you will ever drink beer?	21
3.43 - Do you think you will ever drink wine coolers?	21
3.44 - Do you think you will ever drink liquor?	21
3.45 - Do you think you will ever smoke marijuana?	22
3.46 - Do you think you will ever sniff glue, gas, etc.?	22
3.47 - Do you think you will ever use cocaine/crack?	22
3.48 - Do you think you will ever use other drugs?	22
3.49 - How easy is it to get cigarettes?	23
3.50 - How easy is it to get chewing tobacco, snuff?	23
3.51 - How easy is it to get beer?	23
3.52 - How easy is it to get wine coolers?	23
3.53 - How easy is it to get liquor?	23
3.54 - How easy is it to get marijuana?	24
3.55 - While <i>at</i> school have you smoked cigarettes?	25
3.56 - While <i>at</i> school have you drunk beer, wine coolers or liquor?	25
3.57 - While <i>at</i> school have you smoked marijuana?	25
3.58 - While <i>at</i> school have you sniffed glue, gas, etc.?	25
3.59 - While <i>at</i> school have you been afraid a student will hurt you?	25
3.60 - While <i>at</i> school have you been threatened by a student?	26
3.61 - While <i>at</i> school have you been hurt by a student?	26
3.62 - While <i>at</i> school have you been hurt by an adult?	26
3.63 - While <i>not</i> at school have you smoked cigarettes?	27
3.64 - While <i>not</i> at school have you drunk beer, wine coolers or liquor?	27
3.65 - While <i>not</i> at school have you smoked marijuana?	27
3.66 - While <i>not</i> at school have you sniffed glue, gas, etc.?	27
3.67 - While <i>not</i> at school have you been afraid a student will hurt you?	27
3.68 - While <i>not</i> at school have you been threatened by a student?	28
3.69 - While <i>not</i> at school have you been hurt by a student?	28
3.70 - While <i>not</i> at school have you been hurt by an adult?	28
3.71 - Is it OK for kids my age to smoke cigarettes?	29
3.72 - Is it OK for kids my age to drink beer?	29
3.73 - Is it OK for kids my age to drink wine coolers?	29
3.74 - Is it OK for kids my age to drink liquor?	29
3.75 - Is it OK for kids my age to smoke marijuana?	29
3.76 - Is it OK for kids my age to steal something if you need it?	30
3.77 - Is it OK for kids my age to sell drugs if you need the money?	30
3.78 - Is it OK for kids my age to carry a gun for protection?	30
3.79 - Is it OK for kids my age to take what you want, even if it means hurting some- one?	30
3.80 - Is it OK for kids my age to beat up another student if it is a fair fight?	30
3.81 - Frequency of Use -- Cigarettes	31
3.82 - Frequency of Use -- Chewing Tobacco, Snuff	31
3.83 - Frequency of Use -- Beer	31
3.84 - Frequency of Use -- Wine Coolers	31
3.85 - Frequency of Use -- Liquor	31

List of Tables

3.86 - Frequency of Use -- Marijuana	32
3.87 - Frequency of Use -- Glue, Gas, etc.	32
3.88 - Frequency of Use -- Other Drugs	32

LIST OF FIGURES

2.1 - % Students Who Use Gateway Drugs	5
2.2 - % Students Who Use Illicit Drugs	5
2.3 - Harmful to Health -- Cigarettes, Tobacco, Beer, Wine Coolers	6
2.4 - Harmful to Health -- Liquor, Marijuana, Glue, Gas, Cocaine/Crack	6
2.5 - How Easy Is It For Kids Your Age To Get Cigarettes, Tobacco, Beer	7
2.6 - How Easy Is It For Kids Your Age To Get Wine Coolers, Liquor, Marijuana	7
2.7 - How Many Of Your Friends Used Cigarettes, Chewing Tobacco, Beer	8
2.8 - How Many Of Your Friends Used Wine Coolers, Liquor, Marijuana	8
2.9 - How Many Of Your Friends Used Glue, Gas, Other Drugs	8