

***PRIDE  
QUESTIONNAIRE  
REPORT***

1999-00 National Summary  
Grades 4 through 6

UE990001-252

Mon Aug 19 11:33:38 CDT 2002



## **CHAPTER 1**

### **INTRODUCTION**

The following summary, graphs, and tables are compiled from data collected in your school(s) using the PRIDE Questionnaire. These data reflect prevalence and patterns of local drug and alcohol use. It is important that this report be utilized as part of your drug abuse awareness and prevention program. We strongly suggest that you

**COPY THE FOLLOWING PAGES**

and

**DISTRIBUTE THEM TO YOUR FACULTY.**

The pages highlight and graphically summarize drug use by students in your school.

- Number of 4th grade students surveyed: 10081
- Number of 5th grade students surveyed: 13742
- Number of 6th grade students surveyed: 5138
- Number of students surveyed: 28961

### 1.1. Tobacco Use

**2.9** percent of your 4th grade students said they smoked cigarettes within the past year (1998-99 PRIDE National Avg. = 3.2%). **3.8** percent of your 5th grade students said they smoked cigarettes within the past year (1998-99 PRIDE National Avg. = 4.4%). **7.5** percent of your 6th grade students said they smoked cigarettes within the past year (1998-99 PRIDE National Avg. = 11.9%).

**1.5** percent of your 4th grade students said they used chewing tobacco or snuff within the past year (1998-99 PRIDE National Avg. = 1.3%). **1.6** percent of your 5th grade students said they used chewing tobacco or snuff within the past year (1998-99 PRIDE National Avg. = 1.4%). **2.2** percent of your 6th grade students said they used chewing tobacco or snuff within the past year (1998-99 PRIDE National Avg. = 2.8%).

### 1.2. Alcohol Use

**6.3** percent of your 4th grade students said they drank beer within the past year (1998-99 PRIDE National Avg. = 6.3%). **6.6** percent of your 5th grade students said they drank beer within the past year (1998-99 PRIDE National Avg. = 8.2%). **9.3** percent of your 6th grade students said they drank beer within the past year (1998-99 PRIDE National Avg. = 11.8%).

**6.8** percent of your 4th grade students said they drank wine coolers within the past year (1998-99 PRIDE National Avg. = 5.8%). **8.3** percent of your 5th grade students said they drank wine coolers within the past year (1998-99 PRIDE National Avg. = 8.6%). **11.7** percent of your 6th grade students said they drank wine coolers within the past year (1998-99 PRIDE National Avg. = 14.2%).

**2.3** percent of your 4th grade students said they drank liquor within the past year (1998-99 PRIDE National Avg. = 1.8%). **3.1** percent of your 5th grade students said they drank liquor within the past year (1998-99 PRIDE National Avg. = 3.5%). **5.2** percent of your 6th grade students said they drank liquor within the past year (1998-99 PRIDE National Avg. = 6.9%).

**NOTE:** Beer and wine coolers are the favorite intoxicants of American students.

### 1.3. Marijuana Use

**1.6** percent of your 6th grade students said they smoked marijuana within the past year (1998-99 PRIDE National Avg. = 3.1%).

### 1.4. Inhalant Use

**5.3** percent of your 4th grade students said they sniffed glue, gas, etc. within the past year (1998-99 PRIDE National Avg. = 6.3%). **5.1** percent of your 5th grade students said they sniffed

---

Local percentages below 1% are not reported.

glue, gas, etc. within the past year (1998-99 PRIDE National Avg. = 5.9%). **4.4** percent of your 6th grade students said they sniffed glue, gas, etc. within the past year (1998-99 PRIDE National Avg. = 5.9%).

### **1.5. What You Can Do As A Parent, Teacher, Or Concerned Citizen?**

The drug merchandisers thrive on the ignorance, apathy, and irresponsibility of ordinary citizens.

#### **YOU CAN MAKE A DIFFERENCE!**

Here's how:

- (1) Educate yourself and your family about the health hazards of drugs.
- (2) Insist on no illegal drug use by youngsters. This includes alcohol, tobacco and marijuana.
- (3) Support drug education in the schools, workplace, churches and civic associations.
- (4) Rebuild understanding and respect for the laws concerning alcohol, marijuana, cocaine and other drugs.
- (5) Recognize the danger of the illegal consumer as well as the illegal supplier of alcohol and other drugs.
- (6) Support law-enforcement efforts at home and abroad.
- (7) Write letters, telephone and visit those members of the publishing, merchandising and media world who glamorize, trivialize or subsidize the drug culture.

## CHAPTER 2

### STANDARD GRAPHICS

The following graphs will assist you in understanding the relationship of student behavior to alcohol and other drug usage. You are encouraged to make overheads or slides from the graphs for presentations to school faculty, parents, media, and other audiences in the community.

The *Frequency of Use* graphs show the percent of students at each grade level who report any use of the various drugs. The graphs are divided into *Gateway* and *Illicit* drug categories.

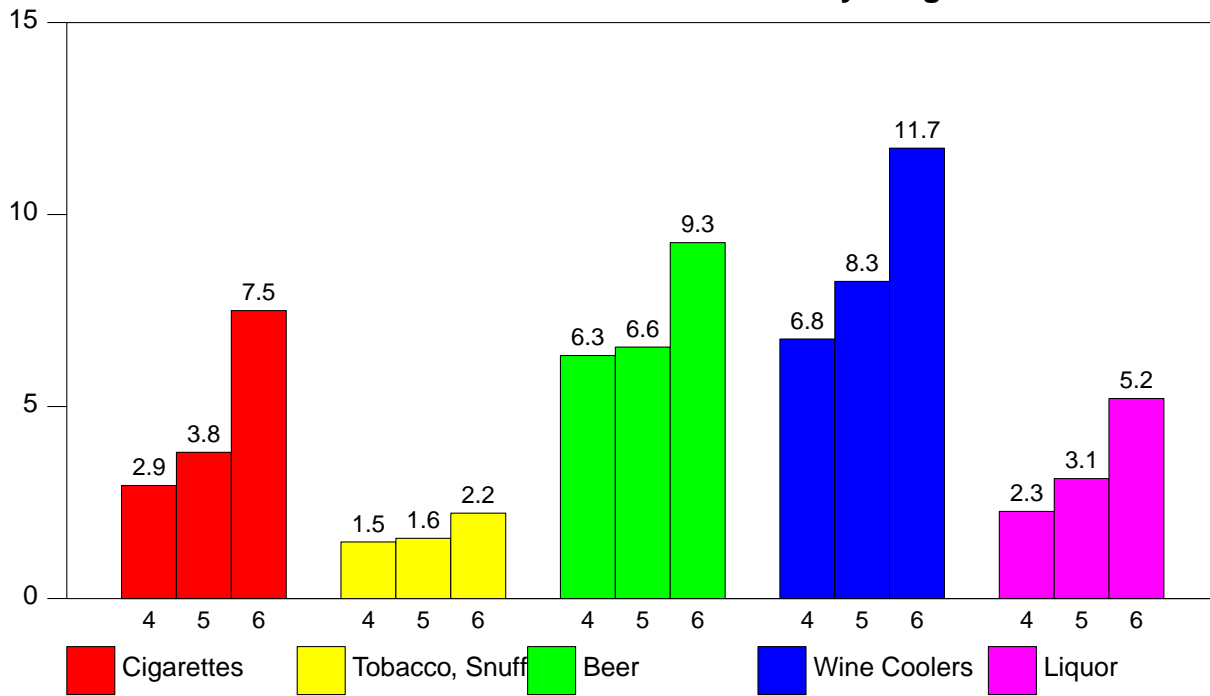
The *Perceived Harm* of alcohol and other drugs will assist with understanding how the false assumptions concerning harm are related to drug use. When drugs are perceived as harmless, the probability of use increases. These graphs show the percent of students who marked *Yes* or *A Lot* on the question *Do You Think The Following Are Harmful To Your Health*.

Research indicates that easy access, *Availability*, to drug increases the probability of use. Availability of alcohol and other drugs normally increases at higher grade levels. These graphs show the percent of students who marked *Easy To Get* on the question *How Easy Is It For Kids Your Age To Get*.

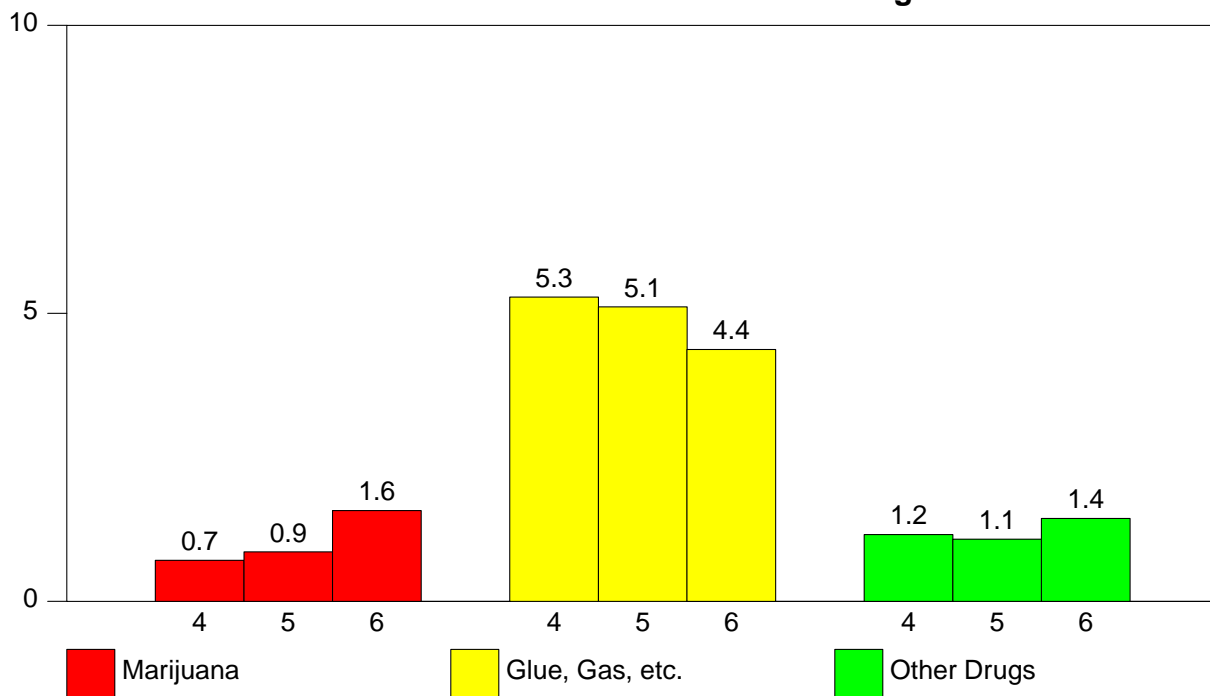
Data collected in past years using the **PRIDE Surveys Questionnaire** indicate a high correlation between friends use of drugs and an individual students use of drugs (i.e. a student who reports use of drugs by friends is more likely to use drugs). These graphs show the percent of students who marked *A Lot* on the question *How Many Of Your Friends Use*.

2.1. Frequency Of Use

2.1 - % Students Who Use Gateway Drugs

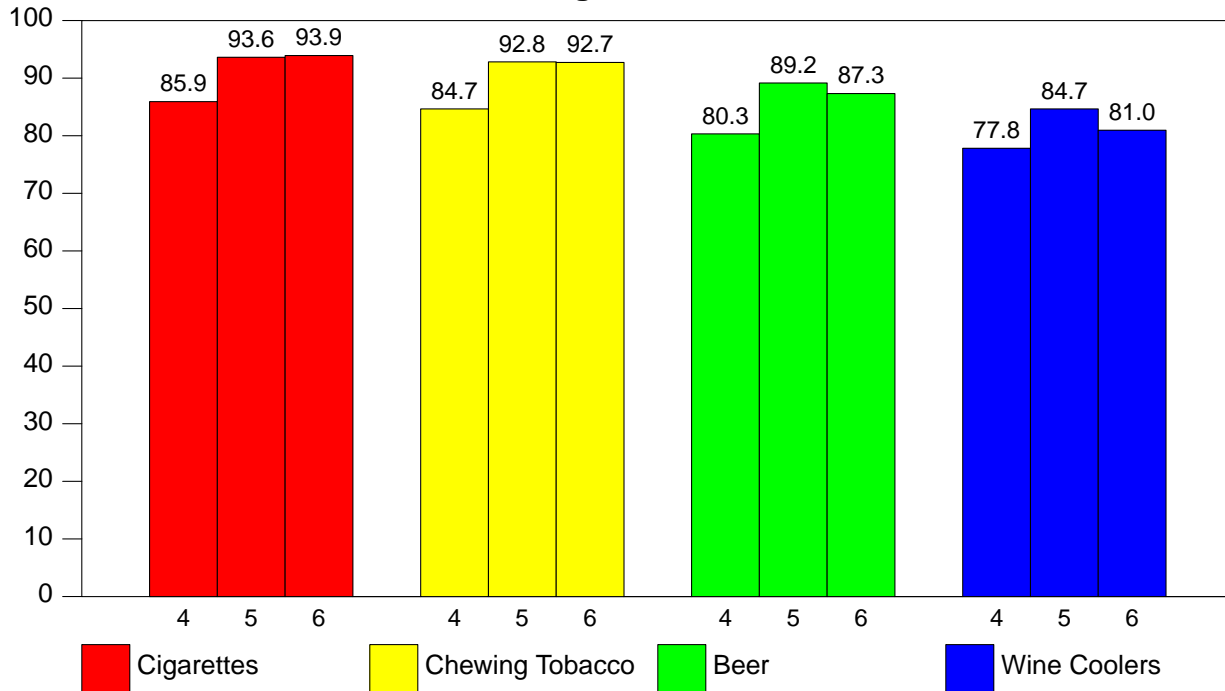


2.2 - % Students Who Use Illicit Drugs

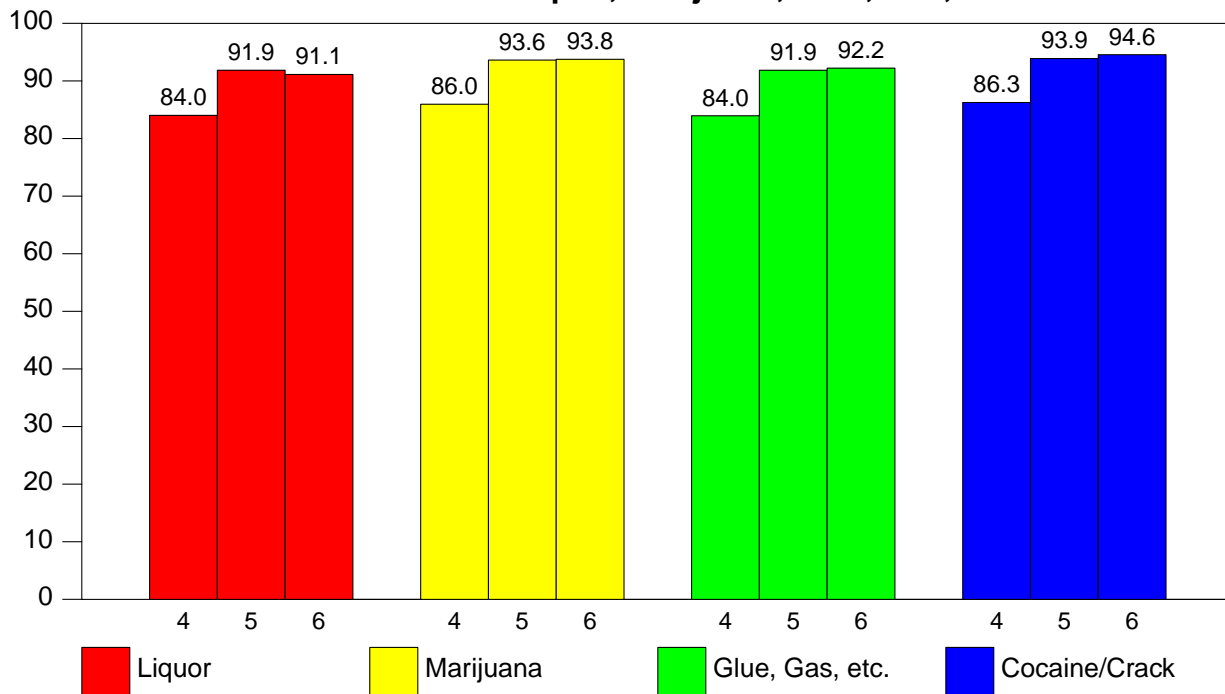


2.2. Harmful To Health

2.3 - Harmful to Health -- Cigarettes, Tobacco, Beer, Wine Coolers

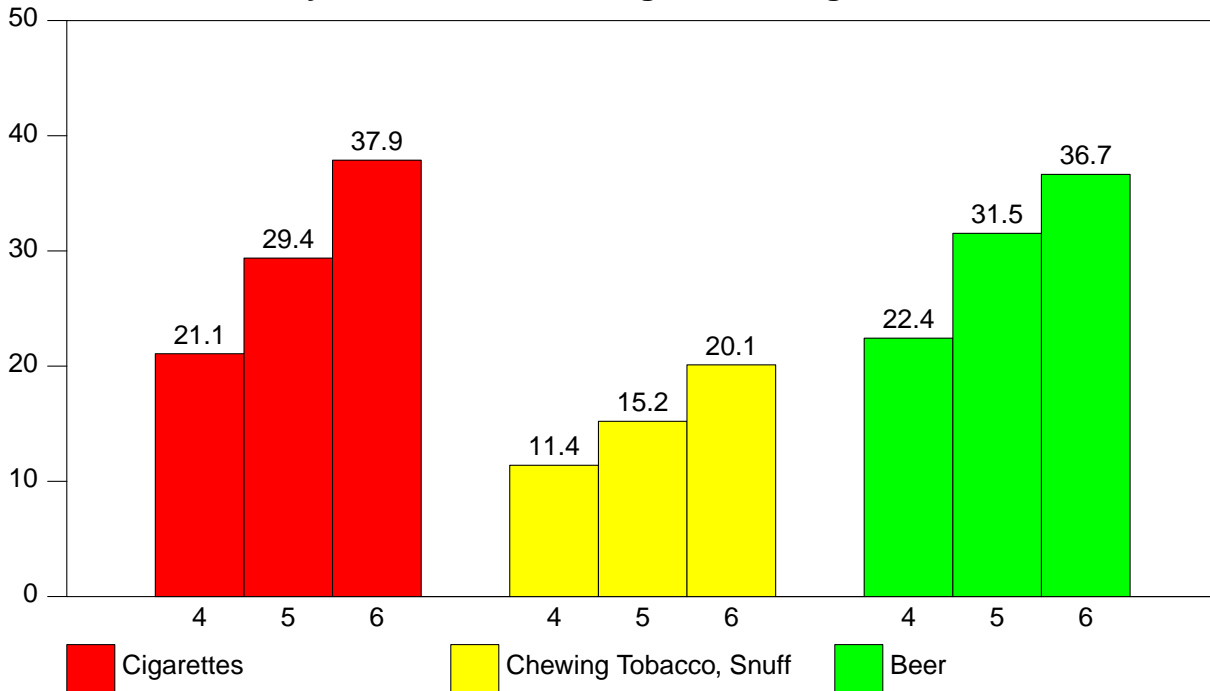


2.4 - Harmful to Health -- Liquor, Marijuana, Glue, Gas, Cocaine/Crack

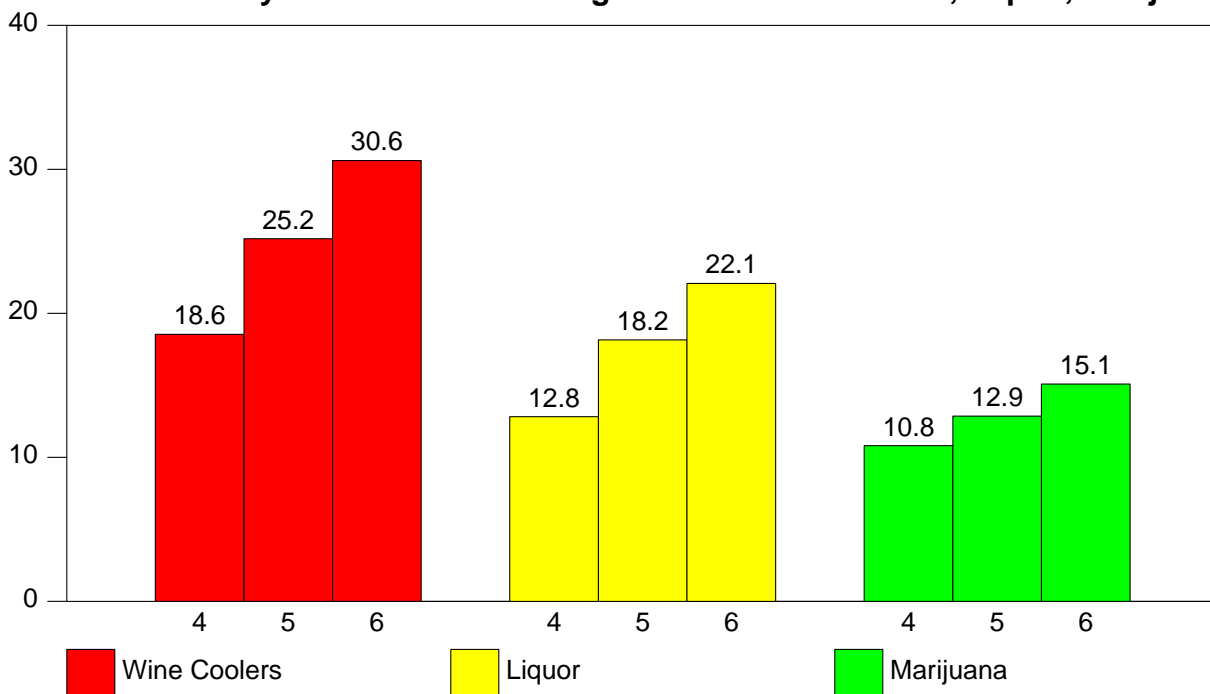


2.3. How Easy Is It For Kids Your Age To Get

2.5 - How Easy Is It For Kids Your Age To Get Cigarettes, Tobacco, Beer



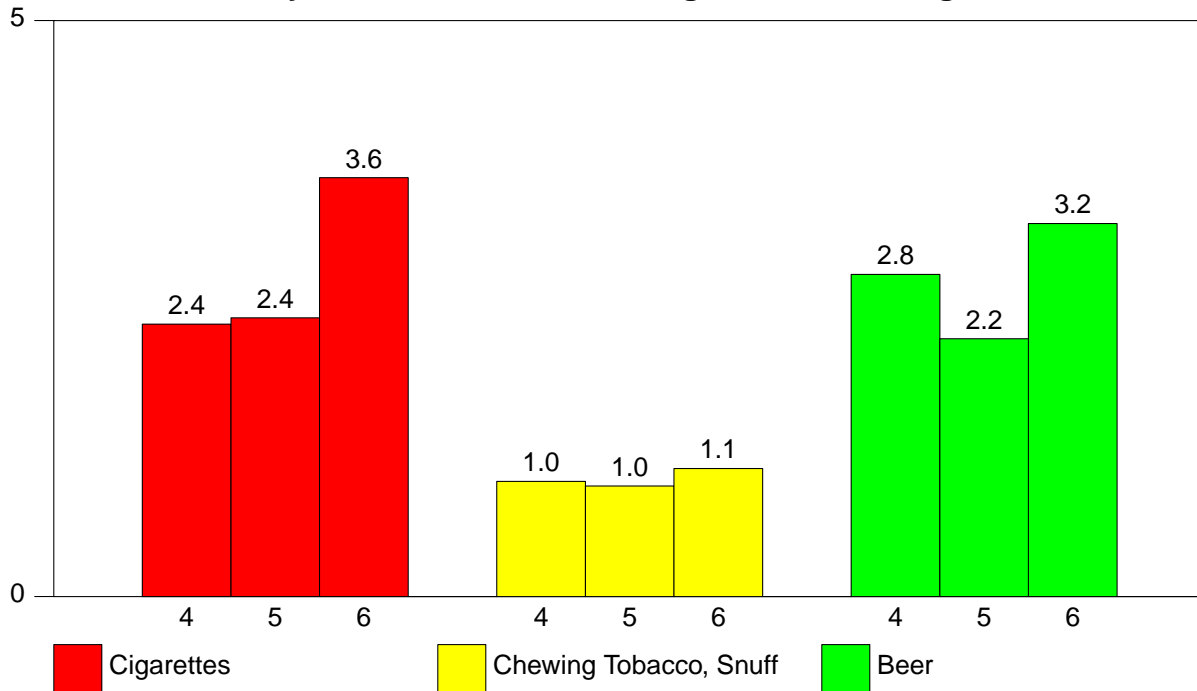
2.6 - How Easy Is It For Kids Your Age To Get Wine Coolers, Liquor, Marijuana



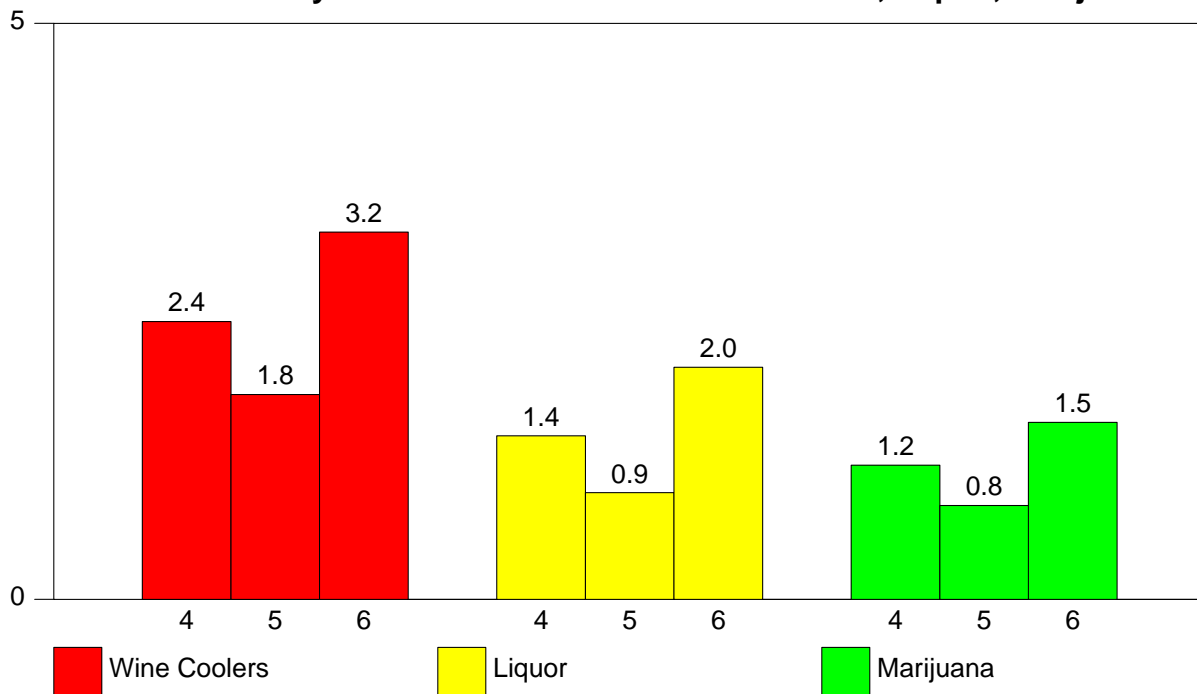


2.4. How Many Of Your Friends

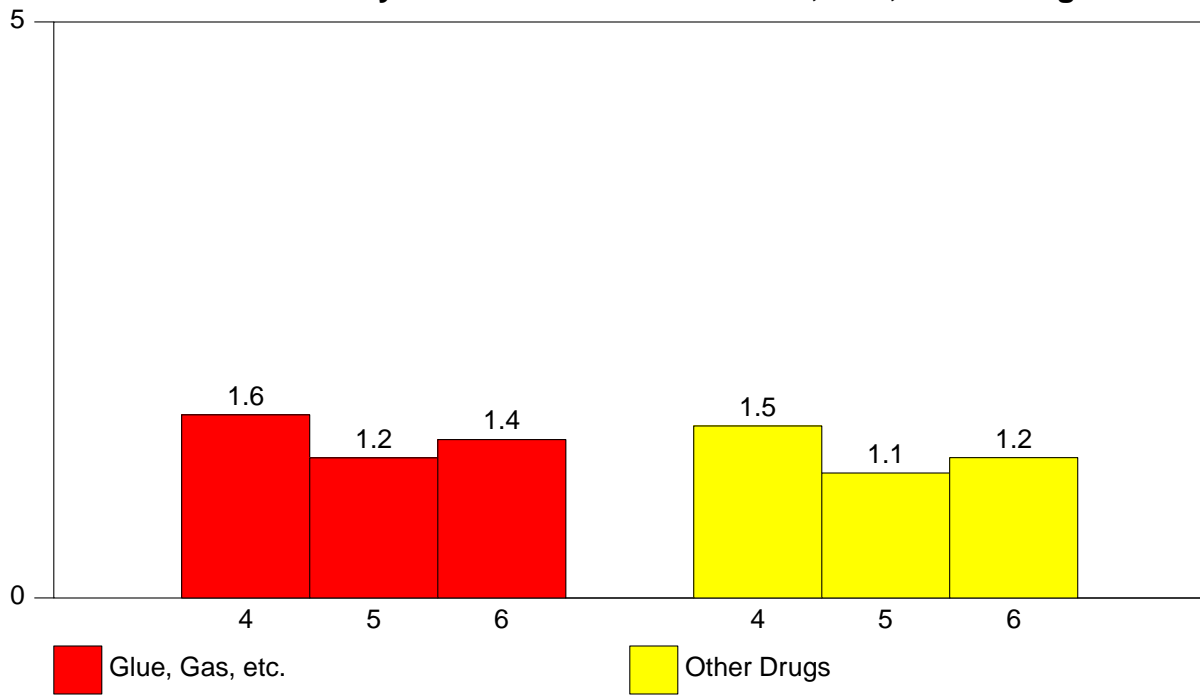
2.7 - How Many Of Your Friends Used Cigarettes, Chewing Tobacco, Beer



2.8 - How Many Of Your Friends Used Wine Coolers, Liquor, Marijuana



### 2.9 - How Many Of Your Friends Used Glue, Gas, Other Drugs



## CHAPTER 3

### PERCENTAGE TABLES

This chapter contains your school survey results in tabular form. Each table corresponds to an item on the questionnaire. The tables contain percentage data by grade level, (grades 4 through 6), and *Total*. The *N of Valid* column contains the number of students responding to the item and the *N of Missing* column contains the number of students not responding to the item. The remaining columns contain the percentages of students responding to the particular response categories.

The percentage tables of the report appear in the same order as corresponding questions on the questionnaire. The Table of Contents contains the percentage tables by section and gives the page number where each section is located. The List of Tables contains the location of each individual table.

The last section of tables presents the frequency of drug use data with the categories *collapsed* as follows:

- Weekly Use - *1-7 Times A Week*
- Monthly Use - *1-2 Times A Month + 1-7 Times A Week*
- Annual Use - *1-6 Times A Year + 1-2 Times A Month  
+ 1-7 Times A Week*

## 3.1. Personal &amp; Family Information

## 3.1 - Sex

<i>Grade Level</i>	<i>N of Valid</i>	<i>N of Miss</i>	<i>Male</i>	<i>Female</i>
4th	10067	13	48.9	51.1
5th	13719	23	50.0	50.0
6th	5126	12	50.7	49.3
Total	28912	48	49.7	50.3

## 3.2 - Ethnic Origin

<i>Grade Level</i>	<i>N of Valid</i>	<i>N of Miss</i>	<i>White</i>	<i>Black</i>	<i>Hispanic</i>	<i>Asian</i>	<i>Native American</i>
4th	9474	259	55.9	32.2	9.9	0.8	1.1
5th	13127	291	75.6	14.4	8.1	1.2	0.7
6th	4795	197	72.1	22.7	3.4	1.2	0.7
Total	27396	747	68.2	22.0	7.9	1.0	0.8

## 3.3 - Age

<i>Grade Level</i>	<i>N of Valid</i>	<i>N of Miss</i>	8	9	10	11	12	13	14+
4th	10044	37	0.5	41.0	48.4	9.0	0.9	0.1	0.0
5th	13683	59	0.0	0.5	45.0	48.6	5.4	0.4	0.1
6th	5111	27	0.1	0.0	0.9	54.1	39.4	5.0	0.5
Total	28838	123	0.2	14.5	38.4	35.8	9.9	1.1	0.1

## 3.2. Student Characteristics

**3.4 - I make good grades.**

<i>Grade Level</i>	<i>N of Valid</i>	<i>N of Miss</i>	<i>Never</i>	<i>Sometimes</i>	<i>A Lot</i>
4th	10006	75	1.5	57.7	40.8
5th	13686	56	0.7	49.0	50.4
6th	5106	32	0.7	48.3	51.0
Total	28798	163	1.0	51.9	47.1

**3.5 - I get into trouble at school.**

<i>Grade Level</i>	<i>N of Valid</i>	<i>N of Miss</i>	<i>Never</i>	<i>Sometimes</i>	<i>A Lot</i>
4th	9936	145	37.5	58.3	4.2
5th	13624	118	41.2	55.2	3.7
6th	5084	54	41.3	54.6	4.1
Total	28644	317	39.9	56.1	3.9

**3.6 - I go to church or synagogue.**

<i>Grade Level</i>	<i>N of Valid</i>	<i>N of Miss</i>	<i>Never</i>	<i>Sometimes</i>	<i>A Lot</i>
4th	9890	191	15.6	40.1	44.3
5th	13546	196	14.2	40.4	45.4
6th	5062	76	13.7	41.9	44.4
Total	28498	463	14.6	40.6	44.8

**3.7 - I talk to my parents about my problems.**

<i>Grade Level</i>	<i>N of Valid</i>	<i>N of Miss</i>	<i>Never</i>	<i>Sometimes</i>	<i>A Lot</i>
4th	9986	95	10.0	45.9	44.1
5th	13646	96	11.2	52.0	36.8
6th	5099	39	14.1	53.5	32.4
Total	28731	230	11.3	50.1	38.6

**3.8 - My parents talk to me about the dangers of using drugs.**

<i>Grade Level</i>	<i>N of Valid</i>	<i>N of Miss</i>	<i>Never</i>	<i>Sometimes</i>	<i>A Lot</i>
4th	9923	158	9.2	29.8	61.0
5th	13578	164	9.5	36.8	53.6
6th	5078	60	10.5	41.0	48.5
Total	28579	382	9.6	35.1	55.3

**3.9 - My teachers talk to me about the dangers of using drugs.**

<i>Grade Level</i>	<i>N of Valid</i>	<i>N of Miss</i>	<i>Never</i>	<i>Sometimes</i>	<i>A Lot</i>
4th	9931	150	7.6	41.9	50.4
5th	13615	127	5.3	40.6	54.0
6th	5080	58	7.7	46.5	45.7
Total	28626	335	6.6	42.1	51.3

**3.10 - My parents make me follow certain rules.**

<i>Grade Level</i>	<i>N of Valid</i>	<i>N of Miss</i>	<i>Never</i>	<i>Sometimes</i>	<i>A Lot</i>
4th	9976	105	3.2	27.7	69.1
5th	13652	90	2.5	31.1	66.4
6th	5095	43	2.4	33.0	64.6
Total	28723	238	2.7	30.3	67.0

**3.11 - I have to be home at a certain time.**

<i>Grade Level</i>	<i>N of Valid</i>	<i>N of Miss</i>	<i>Never</i>	<i>Sometimes</i>	<i>A Lot</i>
4th	9886	195	15.1	43.3	41.6
5th	13520	222	12.2	47.1	40.7
6th	5044	94	10.8	46.4	42.7
Total	28450	511	13.0	45.7	41.4

**3.12 - I go to parties.**

<i>Grade Level</i>	<i>N of Valid</i>	<i>N of Miss</i>	<i>Never</i>	<i>Sometimes</i>	<i>A Lot</i>
4th	9893	188	7.9	57.8	34.4
5th	13552	190	8.6	60.4	31.0
6th	5062	76	8.4	60.5	31.1
Total	28507	454	8.3	59.5	32.2

**3.13 - I am alone at home.**

<i>Grade Level</i>	<i>N of Valid</i>	<i>N of Miss</i>	<i>Never</i>	<i>Sometimes</i>	<i>A Lot</i>
4th	9882	199	49.1	43.9	7.0
5th	13506	236	33.2	56.7	10.1
6th	5046	92	23.1	62.7	14.1
Total	28434	527	36.9	53.3	9.7

**3.14 - The kids at school like me.**

<i>Grade Level</i>	<i>N of Valid</i>	<i>N of Miss</i>	<i>Never</i>	<i>Sometimes</i>	<i>A Lot</i>
4th	9906	175	5.2	39.4	55.4
5th	13541	201	3.5	35.7	60.8
6th	5049	89	2.5	34.6	62.9
Total	28496	465	3.9	36.8	59.3

**3.15 - I feel lonely.**

<i>Grade Level</i>	<i>N of Valid</i>	<i>N of Miss</i>	<i>Never</i>	<i>Sometimes</i>	<i>A Lot</i>
4th	9926	155	46.9	42.3	10.7
5th	13589	153	48.8	42.8	8.4
6th	5066	72	53.7	39.1	7.2
Total	28581	380	49.0	42.0	9.0

## 3.3. Within The Past Year How Often Have You Used

**3.16 - Within the past year how often have you smoked cigarettes?**

<i>Grade Level</i>	<i>N of Valid</i>	<i>N of Miss</i>	<i>Did Not Use</i>	<i>1-6/yr</i>	<i>1-2/mo</i>	<i>1-7/wk</i>
4th	9985	96	97.1	1.4	0.8	0.7
5th	13646	96	96.2	2.4	0.8	0.6
6th	5095	43	92.5	4.3	1.8	1.4
Total	28726	235	95.8	2.4	1.0	0.8

**3.17 - Within the past year how often have you chewed tobacco, snuff?**

<i>Grade Level</i>	<i>N of Valid</i>	<i>N of Miss</i>	<i>Did Not Use</i>	<i>1-6/yr</i>	<i>1-2/mo</i>	<i>1-7/wk</i>
4th	9970	111	98.5	0.8	0.3	0.3
5th	13649	93	98.4	1.0	0.3	0.3
6th	5084	54	97.8	1.3	0.4	0.6
Total	28703	258	98.3	1.0	0.3	0.4

**3.18 - Within the past year how often have you drunk beer?**

<i>Grade Level</i>	<i>N of Valid</i>	<i>N of Miss</i>	<i>Did Not Use</i>	<i>1-6/yr</i>	<i>1-2/mo</i>	<i>1-7/wk</i>
4th	9955	126	93.7	4.1	1.4	0.8
5th	13615	127	93.4	5.0	1.0	0.5
6th	5081	57	90.7	7.0	1.5	0.8
Total	28651	310	93.0	5.1	1.2	0.7

**3.19 - Within the past year how often have you drunk wine coolers?**

<i>Grade Level</i>	<i>N of Valid</i>	<i>N of Miss</i>	<i>Did Not Use</i>	<i>1-6/yr</i>	<i>1-2/mo</i>	<i>1-7/wk</i>
4th	9953	128	93.2	4.2	1.6	1.0
5th	13604	138	91.7	6.2	1.4	0.7
6th	5064	74	88.3	8.6	2.0	1.0
Total	28621	340	91.6	5.9	1.6	0.9

**3.20 - Within the past year how often have you drunk liquor?**

<i>Grade Level</i>	<i>N of Valid</i>	<i>N of Miss</i>	<i>Did Not Use</i>	<i>1-6/yr</i>	<i>1-2/mo</i>	<i>1-7/wk</i>
4th	9945	136	97.7	1.5	0.5	0.3
5th	13600	142	96.9	2.5	0.4	0.2
6th	5066	72	94.8	3.9	0.9	0.4
Total	28611	350	96.8	2.4	0.5	0.3



**3.21 - Within the past year how often have you smoked marijuana?**

<i>Grade Level</i>	<i>N of Valid</i>	<i>N of Miss</i>	<i>Did Not Use</i>	<i>1-6/yr</i>	<i>1-2/mo</i>	<i>1-7/wk</i>
4th	9941	140	99.3	0.3	0.2	0.2
5th	13604	138	99.1	0.5	0.2	0.2
6th	5070	68	98.4	0.6	0.5	0.4
Total	28615	346	99.1	0.4	0.2	0.3

**3.22 - Within the past year how often have you sniffed glue, gas, etc.?**

<i>Grade Level</i>	<i>N of Valid</i>	<i>N of Miss</i>	<i>Did Not Use</i>	<i>1-6/yr</i>	<i>1-2/mo</i>	<i>1-7/wk</i>
4th	9919	162	94.7	3.0	1.3	1.0
5th	13594	148	94.9	3.3	1.1	0.7
6th	5076	62	95.6	2.6	0.9	0.8
Total	28589	372	95.0	3.1	1.1	0.8

**3.23 - Within the past year how often have you used other drugs?**

<i>Grade Level</i>	<i>N of Valid</i>	<i>N of Miss</i>	<i>Did Not Use</i>	<i>1-6/yr</i>	<i>1-2/mo</i>	<i>1-7/wk</i>
4th	9926	155	98.8	0.6	0.3	0.3
5th	13595	147	98.9	0.6	0.2	0.3
6th	5072	66	98.6	0.8	0.3	0.3
Total	28593	368	98.8	0.6	0.2	0.3

**3.24 - Within the past year how often have you used any tobacco products?**

<i>Grade Level</i>	<i>N of Valid</i>	<i>N of Miss</i>	<i>Did Not Use</i>	<i>1-6/yr</i>	<i>1-2/mo</i>	<i>1-7/wk</i>
4th	10014	67	96.1	1.9	1.0	0.9
5th	13683	59	95.3	2.9	0.9	0.8
6th	5114	24	91.5	4.8	2.0	1.8
Total	28811	150	94.9	2.9	1.1	1.0

**3.25 - Within the past year how often have you used any alcohol?**

<i>Grade Level</i>	<i>N of Valid</i>	<i>N of Miss</i>	<i>Did Not Use</i>	<i>1-6/yr</i>	<i>1-2/mo</i>	<i>1-7/wk</i>
4th	10014	67	89.3	6.5	2.5	1.7
5th	13681	61	87.4	9.5	2.0	1.1
6th	5104	34	83.3	12.3	2.9	1.5
Total	28799	162	87.4	9.0	2.3	1.4

**3.26 - Within the past year how often have you used any illicit drugs?**

<i>Grade Level</i>	<i>N of Valid</i>	<i>N of Miss</i>	<i>Did Not Use</i>	<i>1-6/yr</i>	<i>1-2/mo</i>	<i>1-7/wk</i>
4th	10005	76	93.8	3.4	1.5	1.4
5th	13671	71	93.8	3.9	1.2	1.1
6th	5101	37	94.1	3.3	1.3	1.3
Total	28777	184	93.8	3.6	1.3	1.2

## 3.4. How Many Of Your Friends

**3.27 - How many of your friends smoked cigarettes?**

<i>Grade Level</i>	<i>N of Valid</i>	<i>N of Miss</i>	<i>None</i>	<i>A Few</i>	<i>A Lot</i>
4th	9938	143	82.7	14.9	2.4
5th	13596	146	81.1	16.5	2.4
6th	5060	78	71.6	24.7	3.6
Total	28594	367	80.0	17.4	2.6

**3.28 - How many of your friends chewed tobacco, snuff?**

<i>Grade Level</i>	<i>N of Valid</i>	<i>N of Miss</i>	<i>None</i>	<i>A Few</i>	<i>A Lot</i>
4th	9899	182	94.0	5.0	1.0
5th	13549	193	93.4	5.6	1.0
6th	5037	101	90.9	7.9	1.1
Total	28485	476	93.2	5.8	1.0

**3.29 - How many of your friends drank beer?**

<i>Grade Level</i>	<i>N of Valid</i>	<i>N of Miss</i>	<i>None</i>	<i>A Few</i>	<i>A Lot</i>
4th	9903	178	84.1	13.1	2.8
5th	13533	209	84.1	13.6	2.2
6th	5033	105	79.1	17.7	3.2
Total	28469	492	83.2	14.2	2.6

**3.30 - How many of your friends drank wine coolers?**

<i>Grade Level</i>	<i>N of Valid</i>	<i>N of Miss</i>	<i>None</i>	<i>A Few</i>	<i>A Lot</i>
4th	9869	212	87.9	9.7	2.4
5th	13490	252	87.0	11.2	1.8
6th	5019	119	81.3	15.5	3.2
Total	28378	583	86.3	11.5	2.2

**3.31 - How many of your friends drank liquor?**

<i>Grade Level</i>	<i>N of Valid</i>	<i>N of Miss</i>	<i>None</i>	<i>A Few</i>	<i>A Lot</i>
4th	9861	220	93.5	5.0	1.4
5th	13486	256	93.1	5.9	0.9
6th	5013	125	89.0	9.0	2.0
Total	28360	601	92.6	6.2	1.3

**3.32 - How many of your friends smoked marijuana?**

<i>Grade Level</i>	<i>N of Valid</i>	<i>N of Miss</i>	<i>None</i>	<i>A Few</i>	<i>A Lot</i>
4th	9870	211	95.4	3.4	1.2
5th	13502	240	95.7	3.5	0.8
6th	5011	127	93.2	5.3	1.5
Total	28383	578	95.1	3.8	1.1

**3.33 - How many of your friends sniffed glue, gas, etc.?**

<i>Grade Level</i>	<i>N of Valid</i>	<i>N of Miss</i>	<i>None</i>	<i>A Few</i>	<i>A Lot</i>
4th	9815	266	90.1	8.3	1.6
5th	13474	268	90.3	8.5	1.2
6th	5020	118	90.9	7.7	1.4
Total	28309	652	90.3	8.3	1.4

**3.34 - How many of your friends used other drugs?**

<i>Grade Level</i>	<i>N of Valid</i>	<i>N of Miss</i>	<i>None</i>	<i>A Few</i>	<i>A Lot</i>
4th	9843	238	93.9	4.6	1.5
5th	13455	287	95.1	3.8	1.1
6th	5006	132	93.8	5.0	1.2
Total	28304	657	94.5	4.3	1.3

## 3.5. Harmful To Health

**3.35 - Do you feel that using cigarettes is harmful to your health?**

<i>Grade Level</i>	<i>N of Valid</i>	<i>N of Miss</i>	<i>No</i>	<i>Yes</i>	<i>A Lot</i>
4th	9183	898	14.1	43.4	42.5
5th	13149	593	6.4	46.5	47.2
6th	4574	564	6.1	51.0	42.9
Total	26906	2055	8.9	46.2	44.9

**3.36 - Do you feel that using chewing tobacco or snuff is harmful to your health?**

<i>Grade Level</i>	<i>N of Valid</i>	<i>N of Miss</i>	<i>No</i>	<i>Yes</i>	<i>A Lot</i>
4th	9079	1002	15.3	41.1	43.6
5th	13045	697	7.2	43.9	48.9
6th	4495	643	7.3	48.8	43.9
Total	26619	2342	10.0	43.8	46.2

**3.37 - Do you feel that using beer is harmful to your health?**

<i>Grade Level</i>	<i>N of Valid</i>	<i>N of Miss</i>	<i>No</i>	<i>Yes</i>	<i>A Lot</i>
4th	9034	1047	19.7	49.7	30.7
5th	13017	725	10.8	55.6	33.6
6th	4492	646	12.7	57.0	30.4
Total	26543	2418	14.2	53.8	32.1

**3.38 - Do you feel that using wine coolers is harmful to your health?**

<i>Grade Level</i>	<i>N of Valid</i>	<i>N of Miss</i>	<i>No</i>	<i>Yes</i>	<i>A Lot</i>
4th	8940	1141	22.2	47.3	30.5
5th	12898	844	15.3	54.6	30.1
6th	4458	680	19.0	54.9	26.0
Total	26296	2665	18.3	52.2	29.5

**3.39 - Do you feel that using liquor is harmful to your health?**

<i>Grade Level</i>	<i>N of Valid</i>	<i>N of Miss</i>	<i>No</i>	<i>Yes</i>	<i>A Lot</i>
4th	8925	1156	16.0	42.8	41.2
5th	12912	830	8.1	48.1	43.7
6th	4439	699	8.9	50.7	40.5
Total	26276	2685	10.9	46.7	42.3

**3.40 - Do you feel that using marijuana is harmful to your health?**

<i>Grade Level</i>	<i>N of Valid</i>	<i>N of Miss</i>	<i>No</i>	<i>Yes</i>	<i>A Lot</i>
4th	8931	1150	14.0	30.9	55.1
5th	12939	803	6.4	27.8	65.8
6th	4434	704	6.2	30.2	63.6
Total	26304	2657	8.9	29.3	61.8

**3.41 - Do you feel that using glue, gas, etc is harmful to your health?**

<i>Grade Level</i>	<i>N of Valid</i>	<i>N of Miss</i>	<i>No</i>	<i>Yes</i>	<i>A Lot</i>
4th	8922	1159	16.0	41.7	42.3
5th	12918	824	8.1	41.6	50.2
6th	4425	713	7.8	41.9	50.4
Total	26265	2696	10.8	41.7	47.6

**3.42 - Do you feel that using cocaine/crack is harmful to your health?**

<i>Grade Level</i>	<i>N of Valid</i>	<i>N of Miss</i>	<i>No</i>	<i>Yes</i>	<i>A Lot</i>
4th	8887	1194	13.7	29.4	56.8
5th	12904	838	6.1	26.4	67.5
6th	4417	721	5.4	27.9	66.7
Total	26208	2753	8.6	27.7	63.8

## 3.6. Do You Think You Will Ever Use

**3.43 - Do you think you will ever smoke cigarettes?**

<i>Grade Level</i>	<i>N of Valid</i>	<i>N of Miss</i>	<i>Never</i>	<i>Maybe</i>	<i>Yes, I Will</i>	<i>Already Have</i>
4th	9462	619	86.0	11.1	0.8	2.1
5th	13349	393	83.9	12.6	0.8	2.7
6th	4743	395	79.5	14.6	1.2	4.7
Total	27554	1407	83.8	12.5	0.9	2.8

**3.44 - Do you think you will ever chew tobacco, snuff?**

<i>Grade Level</i>	<i>N of Valid</i>	<i>N of Miss</i>	<i>Never</i>	<i>Maybe</i>	<i>Yes, I Will</i>	<i>Already Have</i>
4th	9401	680	96.2	2.7	0.3	0.8
5th	13305	437	95.3	3.4	0.3	0.9
6th	4737	401	94.6	3.6	0.5	1.4
Total	27443	1518	95.5	3.2	0.3	0.9

**3.45 - Do you think you will ever drink beer?**

<i>Grade Level</i>	<i>N of Valid</i>	<i>N of Miss</i>	<i>Never</i>	<i>Maybe</i>	<i>Yes, I Will</i>	<i>Already Have</i>
4th	9347	734	74.9	18.3	3.4	3.4
5th	13238	504	68.2	23.9	4.6	3.4
6th	4653	485	65.4	24.2	6.1	4.3
Total	27238	1723	70.0	22.0	4.4	3.5

**3.46 - Do you think you will ever drink wine coolers?**

<i>Grade Level</i>	<i>N of Valid</i>	<i>N of Miss</i>	<i>Never</i>	<i>Maybe</i>	<i>Yes, I Will</i>	<i>Already Have</i>
4th	9259	822	76.6	16.7	3.3	3.4
5th	13153	589	68.4	23.2	4.4	3.9
6th	4604	534	62.4	25.8	6.5	5.3
Total	27016	1945	70.2	21.4	4.4	4.0

**3.47 - Do you think you will ever drink liquor?**

<i>Grade Level</i>	<i>N of Valid</i>	<i>N of Miss</i>	<i>Never</i>	<i>Maybe</i>	<i>Yes, I Will</i>	<i>Already Have</i>
4th	9325	756	90.7	7.0	1.1	1.2
5th	13176	566	85.6	11.4	1.8	1.2
6th	4642	496	81.3	13.2	3.2	2.2
Total	27143	1818	86.6	10.2	1.8	1.4

**3.48 - Do you think you will ever smoke marijuana?**

<i>Grade Level</i>	<i>N of Valid</i>	<i>N of Miss</i>	<i>Never</i>	<i>Maybe</i>	<i>Yes, I Will</i>	<i>Already Have</i>
4th	9290	791	98.1	1.4	0.2	0.4
5th	13193	549	97.9	1.3	0.2	0.6
6th	4661	477	96.5	2.0	0.5	1.0
Total	27144	1817	97.7	1.5	0.2	0.6

**3.49 - Do you think you will ever sniff glue, gas, etc.?**

<i>Grade Level</i>	<i>N of Valid</i>	<i>N of Miss</i>	<i>Never</i>	<i>Maybe</i>	<i>Yes, I Will</i>	<i>Already Have</i>
4th	9262	819	95.1	2.5	0.2	2.2
5th	13180	562	94.7	2.7	0.3	2.4
6th	4685	453	96.2	1.7	0.3	1.8
Total	27127	1834	95.1	2.4	0.2	2.2

**3.50 - Do you think you will ever use cocaine/crack?**

<i>Grade Level</i>	<i>N of Valid</i>	<i>N of Miss</i>	<i>Never</i>	<i>Maybe</i>	<i>Yes, I Will</i>	<i>Already Have</i>
4th	9240	841	98.7	0.9	0.1	0.2
5th	13189	553	98.7	1.0	0.1	0.2
6th	4631	507	98.6	1.0	0.2	0.2
Total	27060	1901	98.7	1.0	0.1	0.2

**3.51 - Do you think you will ever use other drugs?**

<i>Grade Level</i>	<i>N of Valid</i>	<i>N of Miss</i>	<i>Never</i>	<i>Maybe</i>	<i>Yes, I Will</i>	<i>Already Have</i>
4th	9219	862	96.6	2.7	0.2	0.5
5th	13173	569	96.6	2.7	0.2	0.4
6th	4636	502	96.9	2.3	0.2	0.6
Total	27028	1933	96.6	2.7	0.2	0.5



## 3.7. How Easy Is It For Kids Your Age To Get

**3.52 - How easy is it to get cigarettes?**

<i>Grade Level</i>	<i>N of Valid</i>	<i>N of Miss</i>	<i>Cannot Get</i>	<i>Hard To Get</i>	<i>Easy To Get</i>
4th	9273	808	58.7	20.2	21.1
5th	13134	608	43.7	26.9	29.4
6th	4661	477	35.0	27.1	37.9
Total	27068	1893	47.3	24.6	28.0

**3.53 - How easy is it to get chewing tobacco, snuff?**

<i>Grade Level</i>	<i>N of Valid</i>	<i>N of Miss</i>	<i>Cannot Get</i>	<i>Hard To Get</i>	<i>Easy To Get</i>
4th	9216	865	67.0	21.6	11.4
5th	13014	728	55.6	29.2	15.2
6th	4588	550	48.8	31.1	20.1
Total	26818	2143	58.4	26.9	14.7

**3.54 - How easy is it to get beer?**

<i>Grade Level</i>	<i>N of Valid</i>	<i>N of Miss</i>	<i>Cannot Get</i>	<i>Hard To Get</i>	<i>Easy To Get</i>
4th	9167	914	56.6	21.0	22.4
5th	13020	722	42.8	25.7	31.5
6th	4570	568	36.5	26.8	36.7
Total	26757	2204	46.4	24.3	29.3

**3.55 - How easy is it to get wine coolers?**

<i>Grade Level</i>	<i>N of Valid</i>	<i>N of Miss</i>	<i>Cannot Get</i>	<i>Hard To Get</i>	<i>Easy To Get</i>
4th	9055	1026	60.3	21.2	18.6
5th	12939	803	47.3	27.5	25.2
6th	4517	621	40.6	28.8	30.6
Total	26511	2450	50.6	25.6	23.8

**3.56 - How easy is it to get liquor?**

<i>Grade Level</i>	<i>N of Valid</i>	<i>N of Miss</i>	<i>Cannot Get</i>	<i>Hard To Get</i>	<i>Easy To Get</i>
4th	9049	1032	66.6	20.6	12.8
5th	12910	832	54.7	27.2	18.2
6th	4516	622	47.4	30.5	22.1
Total	26475	2486	57.5	25.5	17.0

**3.57 - How easy is it to get marijuana?**

<i>Grade Level</i>	<i>N of Valid</i>	<i>N of Miss</i>	<i>Cannot Get</i>	<i>Hard To Get</i>	<i>Easy To Get</i>
4th	9061	1020	71.3	17.9	10.8
5th	12919	823	63.1	24.1	12.9
6th	4510	628	57.3	27.6	15.1
Total	26490	2471	64.9	22.6	12.5

## 3.8. While At School Have You

**3.58 - While at school have you smoked cigarettes?**

<i>Grade Level</i>	<i>N of Valid</i>	<i>N of Miss</i>	<i>No</i>	<i>One Time</i>	<i>Two or More</i>
4th	9764	317	99.0	0.7	0.3
5th	13452	290	99.1	0.6	0.3
6th	4962	176	98.4	1.0	0.6
Total	28178	783	98.9	0.7	0.4

**3.59 - While at school have you drunk beer, wine coolers or liquor?**

<i>Grade Level</i>	<i>N of Valid</i>	<i>N of Miss</i>	<i>No</i>	<i>One Time</i>	<i>Two or More</i>
4th	9692	389	98.4	1.1	0.5
5th	13390	352	98.7	0.9	0.4
6th	4926	212	98.5	1.0	0.5
Total	28008	953	98.5	1.0	0.5

**3.60 - While at school have you smoked marijuana?**

<i>Grade Level</i>	<i>N of Valid</i>	<i>N of Miss</i>	<i>No</i>	<i>One Time</i>	<i>Two or More</i>
4th	9658	423	99.6	0.2	0.2
5th	13369	373	99.6	0.2	0.1
6th	4916	222	99.4	0.3	0.3
Total	27943	1018	99.6	0.2	0.2

**3.61 - While at school have you sniffed glue, gas, etc.?**

<i>Grade Level</i>	<i>N of Valid</i>	<i>N of Miss</i>	<i>No</i>	<i>One Time</i>	<i>Two or More</i>
4th	9665	416	94.6	3.8	1.6
5th	13344	398	94.3	3.9	1.8
6th	4926	212	95.2	3.2	1.6
Total	27935	1026	94.6	3.7	1.7

**3.62 - While at school have you been afraid a student will hurt you?**

<i>Grade Level</i>	<i>N of Valid</i>	<i>N of Miss</i>	<i>No</i>	<i>One Time</i>	<i>Two or More</i>
4th	9676	405	72.7	16.4	10.9
5th	13351	391	73.6	16.7	9.7
6th	4936	202	78.0	13.7	8.3
Total	27963	998	74.0	16.1	9.9

**3.63 - While at school have you been threatened by a student?**

<i>Grade Level</i>	<i>N of Valid</i>	<i>N of Miss</i>	<i>No</i>	<i>One Time</i>	<i>Two or More</i>
4th	9682	399	66.7	17.6	15.6
5th	13364	378	66.1	18.3	15.6
6th	4937	201	64.1	19.2	16.6
Total	27983	978	66.0	18.2	15.8

**3.64 - While at school have you been hurt by a student?**

<i>Grade Level</i>	<i>N of Valid</i>	<i>N of Miss</i>	<i>No</i>	<i>One Time</i>	<i>Two or More</i>
4th	9676	405	73.5	16.0	10.5
5th	13338	404	73.9	15.7	10.4
6th	4913	225	79.6	12.0	8.4
Total	27927	1034	74.8	15.2	10.1

**3.65 - While at school have you been hurt by an adult?**

<i>Grade Level</i>	<i>N of Valid</i>	<i>N of Miss</i>	<i>No</i>	<i>One Time</i>	<i>Two or More</i>
4th	9629	452	91.1	4.9	4.0
5th	13346	396	93.6	3.6	2.9
6th	4901	237	94.0	3.4	2.6
Total	27876	1085	92.8	4.0	3.2

3.9. While *Not At School* Have You**3.66 - While *not at school* have you smoked cigarettes?**

<i>Grade Level</i>	<i>N of Valid</i>	<i>N of Miss</i>	<i>No</i>	<i>One Time</i>	<i>Two or More</i>
4th	9746	335	94.3	3.9	1.8
5th	13461	281	92.8	4.6	2.6
6th	4982	156	87.4	7.4	5.2
Total	28189	772	92.3	4.8	2.8

**3.67 - While *not at school* have you drunk beer, wine coolers or liquor?**

<i>Grade Level</i>	<i>N of Valid</i>	<i>N of Miss</i>	<i>No</i>	<i>One Time</i>	<i>Two or More</i>
4th	9716	365	89.7	6.8	3.5
5th	13413	329	86.6	9.1	4.3
6th	4954	184	81.6	10.9	7.5
Total	28083	878	86.8	8.6	4.6

**3.68 - While *not at school* have you smoked marijuana?**

<i>Grade Level</i>	<i>N of Valid</i>	<i>N of Miss</i>	<i>No</i>	<i>One Time</i>	<i>Two or More</i>
4th	9672	409	99.2	0.4	0.4
5th	13387	355	99.1	0.5	0.4
6th	4917	221	97.9	0.9	1.2
Total	27976	985	98.9	0.6	0.5

**3.69 - While *not at school* have you sniffed glue, gas, etc.?**

<i>Grade Level</i>	<i>N of Valid</i>	<i>N of Miss</i>	<i>No</i>	<i>One Time</i>	<i>Two or More</i>
4th	9661	420	95.6	3.0	1.5
5th	13345	397	95.2	3.0	1.8
6th	4931	207	96.1	2.6	1.4
Total	27937	1024	95.5	2.9	1.6

**3.70 - While *not at school* have you been afraid a student will hurt you?**

<i>Grade Level</i>	<i>N of Valid</i>	<i>N of Miss</i>	<i>No</i>	<i>One Time</i>	<i>Two or More</i>
4th	9660	421	80.5	11.4	8.0
5th	13362	380	82.3	10.8	6.9
6th	4931	207	84.5	9.6	5.9
Total	27953	1008	82.1	10.8	7.1

**3.71 - While *not* at school have you been threatened by a student?**

<i>Grade Level</i>	<i>N of Valid</i>	<i>N of Miss</i>	<i>No</i>	<i>One Time</i>	<i>Two or More</i>
4th	9636	445	76.4	13.0	10.7
5th	13375	367	77.1	12.6	10.2
6th	4940	198	76.9	12.3	10.7
Total	27951	1010	76.8	12.7	10.5

**3.72 - While *not* at school have you been hurt by a student?**

<i>Grade Level</i>	<i>N of Valid</i>	<i>N of Miss</i>	<i>No</i>	<i>One Time</i>	<i>Two or More</i>
4th	9643	438	80.9	10.9	8.1
5th	13362	380	81.4	10.4	8.2
6th	4920	218	85.4	8.3	6.3
Total	27925	1036	81.9	10.2	7.8

**3.73 - While *not* at school have you been hurt by an adult?**

<i>Grade Level</i>	<i>N of Valid</i>	<i>N of Miss</i>	<i>No</i>	<i>One Time</i>	<i>Two or More</i>
4th	9603	478	85.6	6.6	7.8
5th	13310	432	87.7	5.5	6.8
6th	4909	229	89.2	5.0	5.9
Total	27822	1139	87.2	5.8	7.0

## 3.10. Is It OK For Kids My Age To

**3.74 - Is it OK for kids my age to smoke cigarettes?**

<i>Grade Level</i>	<i>N of Valid</i>	<i>N of Miss</i>	<i>No</i>	<i>Yes</i>
4th	9822	259	98.5	1.5
5th	13514	228	98.4	1.6
6th	5004	134	96.9	3.1
Total	28340	621	98.2	1.8

**3.75 - Is it OK for kids my age to drink beer?**

<i>Grade Level</i>	<i>N of Valid</i>	<i>N of Miss</i>	<i>No</i>	<i>Yes</i>
4th	9782	299	96.5	3.5
5th	13477	265	97.1	2.9
6th	4972	166	95.9	4.1
Total	28231	730	96.7	3.3

**3.76 - Is it OK for kids my age to drink wine coolers?**

<i>Grade Level</i>	<i>N of Valid</i>	<i>N of Miss</i>	<i>No</i>	<i>Yes</i>
4th	9758	323	94.9	5.1
5th	13445	297	94.6	5.4
6th	4936	202	91.9	8.1
Total	28139	822	94.2	5.8

**3.77 - Is it OK for kids my age to drink liquor?**

<i>Grade Level</i>	<i>N of Valid</i>	<i>N of Miss</i>	<i>No</i>	<i>Yes</i>
4th	9756	325	98.6	1.4
5th	13437	305	98.6	1.4
6th	4968	170	97.6	2.4
Total	28161	800	98.4	1.6

**3.78 - Is it OK for kids my age to smoke marijuana?**

<i>Grade Level</i>	<i>N of Valid</i>	<i>N of Miss</i>	<i>No</i>	<i>Yes</i>
4th	9760	321	99.2	0.8
5th	13446	296	99.1	0.9
6th	4945	193	98.4	1.6
Total	28151	810	99.0	1.0

**3.79 - Is it OK for kids my age to steal something if you need it?**

<i>Grade Level</i>	<i>N of Valid</i>	<i>N of Miss</i>	<i>No</i>	<i>Yes</i>
4th	9762	319	97.0	3.0
5th	13411	331	97.0	3.0
6th	4958	180	96.4	3.6
Total	28131	830	96.9	3.1

**3.80 - Is it OK for kids my age to sell drugs if you need the money?**

<i>Grade Level</i>	<i>N of Valid</i>	<i>N of Miss</i>	<i>No</i>	<i>Yes</i>
4th	9750	331	98.4	1.6
5th	13458	284	98.6	1.4
6th	4959	179	98.0	2.0
Total	28167	794	98.4	1.6

**3.81 - Is it OK for kids my age to carry a gun for protection?**

<i>Grade Level</i>	<i>N of Valid</i>	<i>N of Miss</i>	<i>No</i>	<i>Yes</i>
4th	9698	383	96.2	3.8
5th	13427	315	96.3	3.7
6th	4907	231	94.6	5.4
Total	28032	929	96.0	4.0

**3.82 - Is it OK for kids my age to take what you want, even if it means hurting someone?**

<i>Grade Level</i>	<i>N of Valid</i>	<i>N of Miss</i>	<i>No</i>	<i>Yes</i>
4th	9781	300	97.9	2.1
5th	13452	290	98.4	1.6
6th	4979	159	97.6	2.4
Total	28212	749	98.1	1.9

**3.83 - Is it OK for kids my age to beat up another student if it is a fair fight?**

<i>Grade Level</i>	<i>N of Valid</i>	<i>N of Miss</i>	<i>No</i>	<i>Yes</i>
4th	9766	315	85.2	14.8
5th	13438	304	86.7	13.3
6th	4969	169	80.5	19.5
Total	28173	788	85.1	14.9



## 3.11. Frequency of Use

**3.84 - Frequency of Use -- Cigarettes**

<i>Grade Level</i>	<i>N of Valid</i>	<i>N of Miss</i>	<i>Weekly Use</i>	<i>Monthly Use</i>	<i>Annual Use</i>
4th	9985	96	0.7	1.5	2.9
5th	13646	96	0.6	1.4	3.8
6th	5095	43	1.4	3.2	7.5
Total	28726	235	0.8	1.8	4.2

**3.85 - Frequency of Use -- Chewing Tobacco, Snuff**

<i>Grade Level</i>	<i>N of Valid</i>	<i>N of Miss</i>	<i>Weekly Use</i>	<i>Monthly Use</i>	<i>Annual Use</i>
4th	9970	111	0.3	0.7	1.5
5th	13649	93	0.3	0.6	1.6
6th	5084	54	0.6	1.0	2.2
Total	28703	258	0.4	0.7	1.7

**3.86 - Frequency of Use -- Beer**

<i>Grade Level</i>	<i>N of Valid</i>	<i>N of Miss</i>	<i>Weekly Use</i>	<i>Monthly Use</i>	<i>Annual Use</i>
4th	9955	126	0.8	2.2	6.3
5th	13615	127	0.5	1.5	6.6
6th	5081	57	0.8	2.3	9.3
Total	28651	310	0.7	1.9	7.0

**3.87 - Frequency of Use -- Wine Coolers**

<i>Grade Level</i>	<i>N of Valid</i>	<i>N of Miss</i>	<i>Weekly Use</i>	<i>Monthly Use</i>	<i>Annual Use</i>
4th	9953	128	1.0	2.6	6.8
5th	13604	138	0.7	2.1	8.3
6th	5064	74	1.0	3.1	11.7
Total	28621	340	0.9	2.4	8.4

**3.88 - Frequency of Use -- Liquor**

<i>Grade Level</i>	<i>N of Valid</i>	<i>N of Miss</i>	<i>Weekly Use</i>	<i>Monthly Use</i>	<i>Annual Use</i>
4th	9945	136	0.3	0.8	2.3
5th	13600	142	0.2	0.7	3.1
6th	5066	72	0.4	1.3	5.2
Total	28611	350	0.3	0.8	3.2

**3.89 - Frequency of Use -- Marijuana**

<i>Grade Level</i>	<i>N of Valid</i>	<i>N of Miss</i>	<i>Weekly Use</i>	<i>Monthly Use</i>	<i>Annual Use</i>
4th	9941	140	0.2	0.4	0.7
5th	13604	138	0.2	0.4	0.9
6th	5070	68	0.4	0.9	1.6
Total	28615	346	0.3	0.5	0.9

**3.90 - Frequency of Use -- Glue, Gas, etc.**

<i>Grade Level</i>	<i>N of Valid</i>	<i>N of Miss</i>	<i>Weekly Use</i>	<i>Monthly Use</i>	<i>Annual Use</i>
4th	9919	162	1.0	2.3	5.3
5th	13594	148	0.7	1.8	5.1
6th	5076	62	0.8	1.8	4.4
Total	28589	372	0.8	2.0	5.0

**3.91 - Frequency of Use -- Other Drugs**

<i>Grade Level</i>	<i>N of Valid</i>	<i>N of Miss</i>	<i>Weekly Use</i>	<i>Monthly Use</i>	<i>Annual Use</i>
4th	9926	155	0.3	0.6	1.2
5th	13595	147	0.3	0.5	1.1
6th	5072	66	0.3	0.6	1.4
Total	28593	368	0.3	0.6	1.2

**3.92 - Frequency of Use -- Any Tobacco Products**

<i>Grade Level</i>	<i>N of Valid</i>	<i>N of Miss</i>	<i>Weekly Use</i>	<i>Monthly Use</i>	<i>Annual Use</i>
4th	10014	67	0.9	1.9	3.9
5th	13683	59	0.8	1.8	4.7
6th	5114	24	1.8	3.7	8.5
Total	28811	150	1.0	2.2	5.1

**3.93 - Frequency of Use -- Any Alcohol**

<i>Grade Level</i>	<i>N of Valid</i>	<i>N of Miss</i>	<i>Weekly Use</i>	<i>Monthly Use</i>	<i>Annual Use</i>
4th	10014	67	1.7	4.2	10.7
5th	13681	61	1.1	3.0	12.6
6th	5104	34	1.5	4.4	16.7
Total	28799	162	1.4	3.7	12.6

**3.94 - Frequency of Use -- Any Illicit Drugs**

<i>Grade Level</i>	<i>N of Valid</i>	<i>N of Miss</i>	<i>Weekly Use</i>	<i>Monthly Use</i>	<i>Annual Use</i>
4th	10005	76	1.4	2.8	6.2
5th	13671	71	1.1	2.4	6.2
6th	5101	37	1.3	2.6	5.9
Total	28777	184	1.2	2.6	6.2

## TABLE OF CONTENTS

<b>1 INTRODUCTION</b> .....	1
1.1 Tobacco Use .....	2
1.2 Alcohol Use .....	2
1.3 Marijuana Use .....	2
1.4 Inhalant Use .....	2
1.5 What You Can Do As A Parent, Teacher, Or Concerned Citizen? .....	3
<b>2 STANDARD GRAPHICS</b> .....	4
2.1 Frequency Of Use .....	5
2.2 Harmful To Health .....	6
2.3 How Easy Is It For Kids Your Age To Get .....	7
2.4 How Many Of Your Friends .....	8
<b>3 PERCENTAGE TABLES</b> .....	10
3.1 Personal & Family Information .....	11
3.2 Student Characteristics .....	12
3.3 Within The Past Year How Often Have You Used .....	15
3.4 How Many Of Your Friends .....	18
3.5 Harmful To Health .....	20
3.6 Do You Think You Will Ever Use .....	22
3.7 How Easy Is It For Kids Your Age To Get .....	24
3.8 While At School Have You .....	26
3.9 While <i>Not</i> At School Have You .....	28
3.10 Is It OK For Kids My Age To .....	30
3.11 Frequency of Use .....	32

## LIST OF TABLES

3.1 - Sex .....	11
3.2 - Ethnic Origin .....	11
3.3 - Age .....	11
3.4 - I make good grades. ....	12
3.5 - I get into trouble at school. ....	12
3.6 - I go to church or synagogue. ....	12
3.7 - I talk to my parents about my problems. ....	12
3.8 - My parents talk to me about the dangers of using drugs. ....	12
3.9 - My teachers talk to me about the dangers of using drugs. ....	13
3.10 - My parents make me follow certain rules. ....	13
3.11 - I have to be home at a certain time. ....	13
3.12 - I go to parties. ....	13
3.13 - I am alone at home. ....	13
3.14 - The kids at school like me. ....	14
3.15 - I feel lonely. ....	14
3.16 - Within the past year how often have you smoked cigarettes? .....	15
3.17 - Within the past year how often have you chewed tobacco, snuff? .....	15
3.18 - Within the past year how often have you drunk beer? .....	15
3.19 - Within the past year how often have you drunk wine coolers? .....	15
3.20 - Within the past year how often have you drunk liquor? .....	15
3.21 - Within the past year how often have you smoked marijuana? .....	16
3.22 - Within the past year how often have you sniffed glue, gas, etc.? .....	16
3.23 - Within the past year how often have you used other drugs? .....	16
3.24 - Within the past year how often have you used any tobacco products? .....	16
3.25 - Within the past year how often have you used any alcohol? .....	16
3.26 - Within the past year how often have you used any illicit drugs? .....	17
3.27 - How many of your friends smoked cigarettes? .....	18
3.28 - How many of your friends chewed tobacco, snuff? .....	18
3.29 - How many of your friends drank beer? .....	18
3.30 - How many of your friends drank wine coolers? .....	18
3.31 - How many of your friends drank liquor? .....	18
3.32 - How many of your friends smoked marijuana? .....	19
3.33 - How many of your friends sniffed glue, gas, etc.? .....	19
3.34 - How many of your friends used other drugs? .....	19
3.35 - Do you feel that using cigarettes is harmful to your health? .....	20
3.36 - Do you feel that using chewing tobacco or snuff is harmful to your health? .....	20
3.37 - Do you feel that using beer is harmful to your health? .....	20
3.38 - Do you feel that using wine coolers is harmful to your health? .....	20
3.39 - Do you feel that using liquor is harmful to your health? .....	20
3.40 - Do you feel that using marijuana is harmful to your health? .....	21

3.41 - Do you feel that using glue, gas, etc is harmful to your health? .....	21
3.42 - Do you feel that using cocaine/crack is harmful to your health? .....	21
3.43 - Do you think you will ever smoke cigarettes? .....	22
3.44 - Do you think you will ever chew tobacco, snuff? .....	22
3.45 - Do you think you will ever drink beer? .....	22
3.46 - Do you think you will ever drink wine coolers? .....	22
3.47 - Do you think you will ever drink liquor? .....	22
3.48 - Do you think you will ever smoke marijuana? .....	23
3.49 - Do you think you will ever sniff glue, gas, etc.? .....	23
3.50 - Do you think you will ever use cocaine/crack? .....	23
3.51 - Do you think you will ever use other drugs? .....	23
3.52 - How easy is it to get cigarettes? .....	24
3.53 - How easy is it to get chewing tobacco, snuff? .....	24
3.54 - How easy is it to get beer? .....	24
3.55 - How easy is it to get wine coolers? .....	24
3.56 - How easy is it to get liquor? .....	24
3.57 - How easy is it to get marijuana? .....	25
3.58 - While <i>at</i> school have you smoked cigarettes? .....	26
3.59 - While <i>at</i> school have you drunk beer, wine coolers or liquor? .....	26
3.60 - While <i>at</i> school have you smoked marijuana? .....	26
3.61 - While <i>at</i> school have you sniffed glue, gas, etc.? .....	26
3.62 - While <i>at</i> school have you been afraid a student will hurt you? .....	26
3.63 - While <i>at</i> school have you been threatened by a student? .....	27
3.64 - While <i>at</i> school have you been hurt by a student? .....	27
3.65 - While <i>at</i> school have you been hurt by an adult? .....	27
3.66 - While <i>not</i> at school have you smoked cigarettes? .....	28
3.67 - While <i>not</i> at school have you drunk beer, wine coolers or liquor? .....	28
3.68 - While <i>not</i> at school have you smoked marijuana? .....	28
3.69 - While <i>not</i> at school have you sniffed glue, gas, etc.? .....	28
3.70 - While <i>not</i> at school have you been afraid a student will hurt you? .....	28
3.71 - While <i>not</i> at school have you been threatened by a student? .....	29
3.72 - While <i>not</i> at school have you been hurt by a student? .....	29
3.73 - While <i>not</i> at school have you been hurt by an adult? .....	29
3.74 - Is it OK for kids my age to smoke cigarettes? .....	30
3.75 - Is it OK for kids my age to drink beer? .....	30
3.76 - Is it OK for kids my age to drink wine coolers? .....	30
3.77 - Is it OK for kids my age to drink liquor? .....	30
3.78 - Is it OK for kids my age to smoke marijuana? .....	30
3.79 - Is it OK for kids my age to steal something if you need it? .....	31
3.80 - Is it OK for kids my age to sell drugs if you need the money? .....	31
3.81 - Is it OK for kids my age to carry a gun for protection? .....	31
3.82 - Is it OK for kids my age to take what you want, even if it means hurting some- one? .....	31
3.83 - Is it OK for kids my age to beat up another student if it is a fair fight? .....	31
3.84 - Frequency of Use -- Cigarettes .....	32
3.85 - Frequency of Use -- Chewing Tobacco, Snuff .....	32

**List of Tables**

3.86 - Frequency of Use -- Beer .....	32
3.87 - Frequency of Use -- Wine Coolers .....	32
3.88 - Frequency of Use -- Liquor .....	32
3.89 - Frequency of Use -- Marijuana .....	33
3.90 - Frequency of Use -- Glue, Gas, etc. ....	33
3.91 - Frequency of Use -- Other Drugs .....	33
3.92 - Frequency of Use -- Any Tobacco Products .....	33
3.93 - Frequency of Use -- Any Alcohol .....	33
3.94 - Frequency of Use -- Any Illicit Drugs .....	34

## LIST OF FIGURES

2.1 - % Students Who Use Gateway Drugs .....	5
2.2 - % Students Who Use Illicit Drugs .....	5
2.3 - Harmful to Health -- Cigarettes, Tobacco, Beer, Wine Coolers .....	6
2.4 - Harmful to Health -- Liquor, Marijuana, Glue, Gas, Cocaine/Crack .....	6
2.5 - How Easy Is It For Kids Your Age To Get Cigarettes, Tobacco, Beer .....	7
2.6 - How Easy Is It For Kids Your Age To Get Wine Coolers, Liquor, Marijuana .....	7
2.7 - How Many Of Your Friends Used Cigarettes, Chewing Tobacco, Beer .....	8
2.8 - How Many Of Your Friends Used Wine Coolers, Liquor, Marijuana .....	8
2.9 - How Many Of Your Friends Used Glue, Gas, Other Drugs .....	8