



**Questionnaire Report for Parents**

**2005-06 National Summary for Parents**

September 19, 2006

# Contents

<b>1</b>	<b>Introduction</b>	<b>1</b>
<b>2</b>	<b>Standard Graphics</b>	<b>3</b>
<b>3</b>	<b>Percentage Tables</b>	<b>7</b>
3.1	Parent Demographics . . . . .	8
3.2	Student Demographics . . . . .	10
3.3	Student Information . . . . .	12
3.4	Community Information . . . . .	20
3.5	Impressions About Drug Use . . . . .	25
3.6	During The Past Year Your Child Has Used . . . . .	29
3.7	How Easy Is It For Students In Your Child’s Grade To Get . . . . .	33
3.8	Safety at School . . . . .	40
3.9	Effectiveness of Solutions . . . . .	44

# List of Tables

3.1	Relation To Child	8
3.2	Marital Status	8
3.3	Ethnic Origin	9
3.4	Sex Of Child	10
3.5	Use Of Tobacco - My Child	10
3.6	Use Of Alcohol - My Child	11
3.7	Use Of Drugs - My Child	11
3.8	My Child Makes Good Grades In School	12
3.9	My Child Gets Into Trouble At School	12
3.10	My Child Attends Church, Synagogue, Etc.	13
3.11	I Set Clear Rules For My Child	13
3.12	I Punish My Child When He/She Breaks The Rules	13
3.13	I Talk To My Child About The Harmful Effects Of Using Tobacco, Alcohol And Drugs	14
3.14	Teachers Talk To Students About The Harmful Effects Of Using Tobacco, Alcohol And Drugs	14
3.15	Our School Works With Parents Regarding Drug Abuse Prevention	14
3.16	Law Enforcement Is Doing A Good Job In Keeping Alcohol Away From Students	15
3.17	Law Enforcement Is Doing A Good Job In Keeping Drugs Away From Students	15
3.18	I Am Afraid My Child Will Be Hurt At School	15
3.19	My Child Takes Part In Gang Activities	16
3.20	My Child Has Been Threatened With A Gun, Knife Or Club At School	16
3.21	A Student Has Threatened To Hit, Slap Or Kick My Child	16
3.22	Our School Sets Clear Rules On Using Drugs At School	17
3.23	Our School Sets Clear Rules On Bullying Or Threatening Behavior	17
3.24	I See Ads On TV That Encourage Me To Talk To My Child About Drug Use	17
3.25	My Child Participates In Community Activities Such as Scouts, Rec. Teams, Youth Clubs, Etc.	18
3.26	My Child Participates In School Activities Such as Band, Clubs, Etc.	18
3.27	The School Has Security (Police) Officer	18
3.28	A Security (Police) Officer Can Prevent Violence At School	19
3.29	Every School Needs A Security (Police) Officer	19
3.30	My Child Has Skipped School Without My Permission	19
3.31	Drug And Alcohol Use Is A Big Problem Facing Youth In My Community	20
3.32	Youth Violence Is A Big Problem In My Community	20
3.33	My Child Has Friends Who Drink Alcohol	21
3.34	It Would Be Okay With Me For My Child To Use Alcohol If He/She Would Not Use Other Drugs	21
3.35	Beer Ads Encourage Underage Drinking	21

3.36 My Child Has Friends Who Use Tobacco . . . . .	22
3.37 My Child Has Friends Who Use Drugs . . . . .	22
3.38 It Would Be Okay With Me For My Child To Smoke A Little Pot If He/She Would Leave Other Drugs Alone . . . . .	23
3.39 My Child Has Had 5 Or More Glasses Of Beer, Coolers Or Liquor Within A Few Hours . . .	23
3.40 The Alcohol Industry Does A Good Job Of Discouraging Underage Drinking. . . . .	24
3.41 Harmfulness Of Use – Cigarettes . . . . .	25
3.42 Harmfulness Of Use – Smokeless Tobacco (Chew, Etc.) . . . . .	25
3.43 Harmfulness Of Use – Cigars . . . . .	26
3.44 Harmfulness Of Use – Beer . . . . .	26
3.45 Harmfulness Of Use – Coolers, Breezers, Hard Lemonades, Etc. . . . .	26
3.46 Harmfulness Of Use – Liquor . . . . .	27
3.47 Harmfulness Of Use – Marijuana . . . . .	27
3.48 Harmfulness Of Use – Cocaine (Crack, Etc) . . . . .	27
3.49 Harmfulness Of Use – Crystal Meth (Ice, Crank, Etc.) . . . . .	28
3.50 Percent Of Use – Cigarettes . . . . .	29
3.51 Percent Of Use – Smokeless Tobacco (Chew, Etc.) . . . . .	29
3.52 Percent Of Use – Cigars . . . . .	30
3.53 Percent Of Use – Beer . . . . .	30
3.54 Percent Of Use – Coolers, Breezers, Hard Lemonades, Etc. . . . .	30
3.55 Percent Of Use – Liquor . . . . .	31
3.56 Percent Of Use – Marijuana . . . . .	31
3.57 Percent Of Use – Cocaine (Crack, Etc) . . . . .	31
3.58 Percent Of Use – Crystal Meth (Ice, Crank, Etc.) . . . . .	32
3.59 How Easy Is It For Students In Your Child's Grade To Get Cigarettes . . . . .	33
3.60 How Easy Is It For Students In Your Child's Grade To Get Smokeless Tobacco (Chew, Etc.)	33
3.61 How Easy Is It For Students In Your Child's Grade To Get Cigars . . . . .	34
3.62 How Easy Is It For Students In Your Child's Grade To Get Beer . . . . .	34
3.63 How Easy Is It For Students In Your Child's Grade To Get Coolers, Breezers, Hard Lemon- ades, Etc. . . . .	35
3.64 How Easy Is It For Students In Your Child's Grade To Get Liquor . . . . .	35
3.65 How Easy Is It For Students In Your Child's Grade To Get Marijuana . . . . .	36
3.66 How Easy Is It For Students In Your Child's Grade To Get Cocaine (Crack, Etc) . . . . .	36
3.67 How Easy Is It For Students In Your Child's Grade To Get Uppers (Stimulants) . . . . .	36
3.68 How Easy Is It For Students In Your Child's Grade To Get Downers (Depressants) . . . . .	37
3.69 How Easy Is It For Students In Your Child's Grade To Get Inhalants (Glue, Etc) . . . . .	37
3.70 How Easy Is It For Students In Your Child's Grade To Get Hallucinogens (PCP, LSD, Etc) .	37
3.71 How Easy Is It For Students In Your Child's Grade To Get Heroin (Opiates) . . . . .	38
3.72 How Easy Is It For Students In Your Child's Grade To Get Anabolic Steroids . . . . .	38
3.73 How Easy Is It For Students In Your Child's Grade To Get Ecstasy (MDMA) . . . . .	38
3.74 How Easy Is It For Students In Your Child's Grade To Get OxyContin . . . . .	39
3.75 How Easy Is It For Students In Your Child's Grade To Get Crystal Meth (Ice, Crank, Etc.) . .	39
3.76 How Easy Is It For Students In Your Child's Grade To Get A Gun . . . . .	39
3.77 While At School My Child Feels Safe In The Classroom . . . . .	40
3.78 While At School My Child Feels Safe In The Cafeteria . . . . .	40

3.79 While At School My Child Feels Safe In The Halls . . . . .	41
3.80 While At School My Child Feels Safe In the Bathroom . . . . .	41
3.81 While At School My Child Feels Safe In The Gym . . . . .	41
3.82 While At School My Child Feels Safe On The School Bus . . . . .	42
3.83 While At School My Child Feels Safe At School Events . . . . .	42
3.84 While At School My Child Feels Safe On The Playground . . . . .	42
3.85 While At School My Child Feels Safe In The Parking Lot . . . . .	43
3.86 School-based Education About The Harmful Effects Of Drug And Alcohol Use . . . . .	44
3.87 TV Ads On Preventing Drug Use By Youth . . . . .	44
3.88 TV Ads On Preventing Alcohol Use By Youth . . . . .	45
3.89 Religious Institutions Providing Drug Education To Young People . . . . .	45
3.90 Parents Providing Drug Education To Their Children . . . . .	45
3.91 Parents Taking Responsibility For Their Children's Use Of Drugs And Alcohol . . . . .	46
3.92 News Media Keeping Parents/Public Informed About Student Drug Use And Violence . . . . .	46
3.93 Schools Keeping Parents/Public Informed About Student Drug Use And Violence . . . . .	46
3.94 Community Anti-drug Coalition For Keeping Students Drug Free . . . . .	47
3.95 After School Activities For Students At School . . . . .	47
3.96 After School Activities For Students In The Community (Not At School) . . . . .	47
3.97 Treatment For Students Who Are Drug And/Or Alcohol Dependent . . . . .	48
3.98 School Policy On Student Use Of Drugs And Alcohol At School . . . . .	48
3.99 School Policy On Student Violence/Bullying . . . . .	48
3.100 Having A Security (Police) Officer At The School . . . . .	49
3.101 Drug Screening Of Students By The School . . . . .	49

# List of Figures

- 2.1 During the Past Year My Child Has Used Tobacco . . . . . 4
- 2.2 During the Past Year My Child Has Used Alcohol . . . . . 5
- 2.3 During the Past Year My Child Has Used Illicit Drugs . . . . . 6

# Chapter 1

## Introduction

The following graphs and tables are compiled from data collected from parents in your school(s) using the *Pride Questionnaire for Parents*. These data reflect information, impressions and knowledge parents have regarding drug and alcohol use and violence amongst your students. It is important that this report be utilized as part of your drug abuse and violence awareness and prevention programs. We strongly suggest that you:

**COPY THE FOLLOWING PAGES,** (which highlight and graphically summarize drug use and violent behavior by students in your school)

**DISTRIBUTE THEM TO YOUR FACULTY**

**AND SHARE THIS INFORMATION WITH PARENTS.**

Most of all, we strongly encourage a parent meeting at your school to share this information!

**NOTE:** Most drug use occurs at nights and weekends when school is not in session.

**FOR GREATEST SUCCESS IN DECREASING DRUG USE, FACULTY, STUDENTS AND PARENTS MUST WORK TOGETHER TOWARD A DRUG-FREE LIFESTYLE.**

If you have questions about this report, or if you wish to have information on other **Pride Surveys** services and products, please call the **Pride Surveys** Office or write to the following address:

**Pride Surveys**

Janie Pitcock

160 Vanderbilt Court

Bowling Green, KY 42103

1-800-279-6361

1-270-746-9596

[www.pridesurveys.com](http://www.pridesurveys.com)

The following information is for **Pride Surveys** internal use only.

- Data Files: up059999
- Filter:

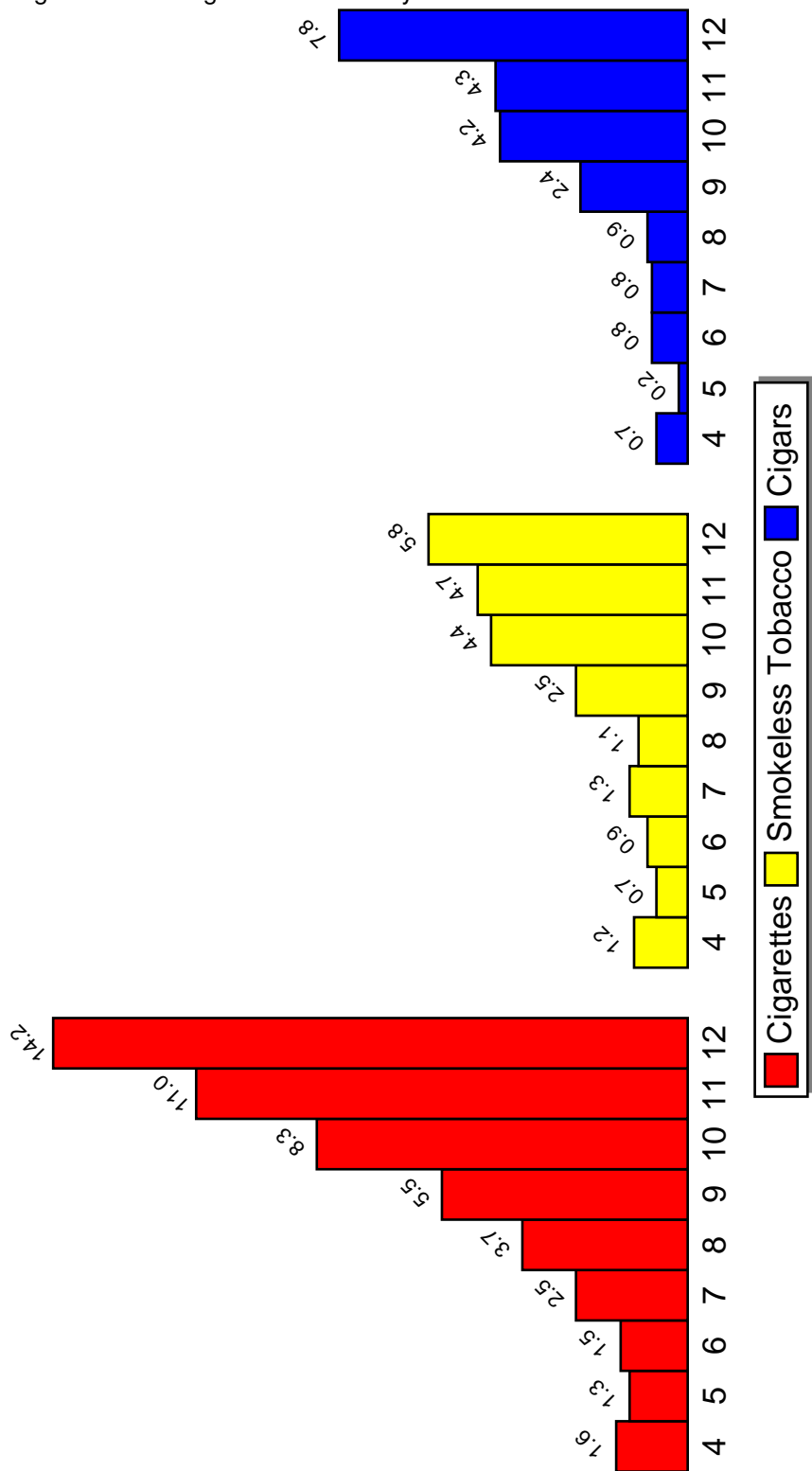


## **Chapter 2**

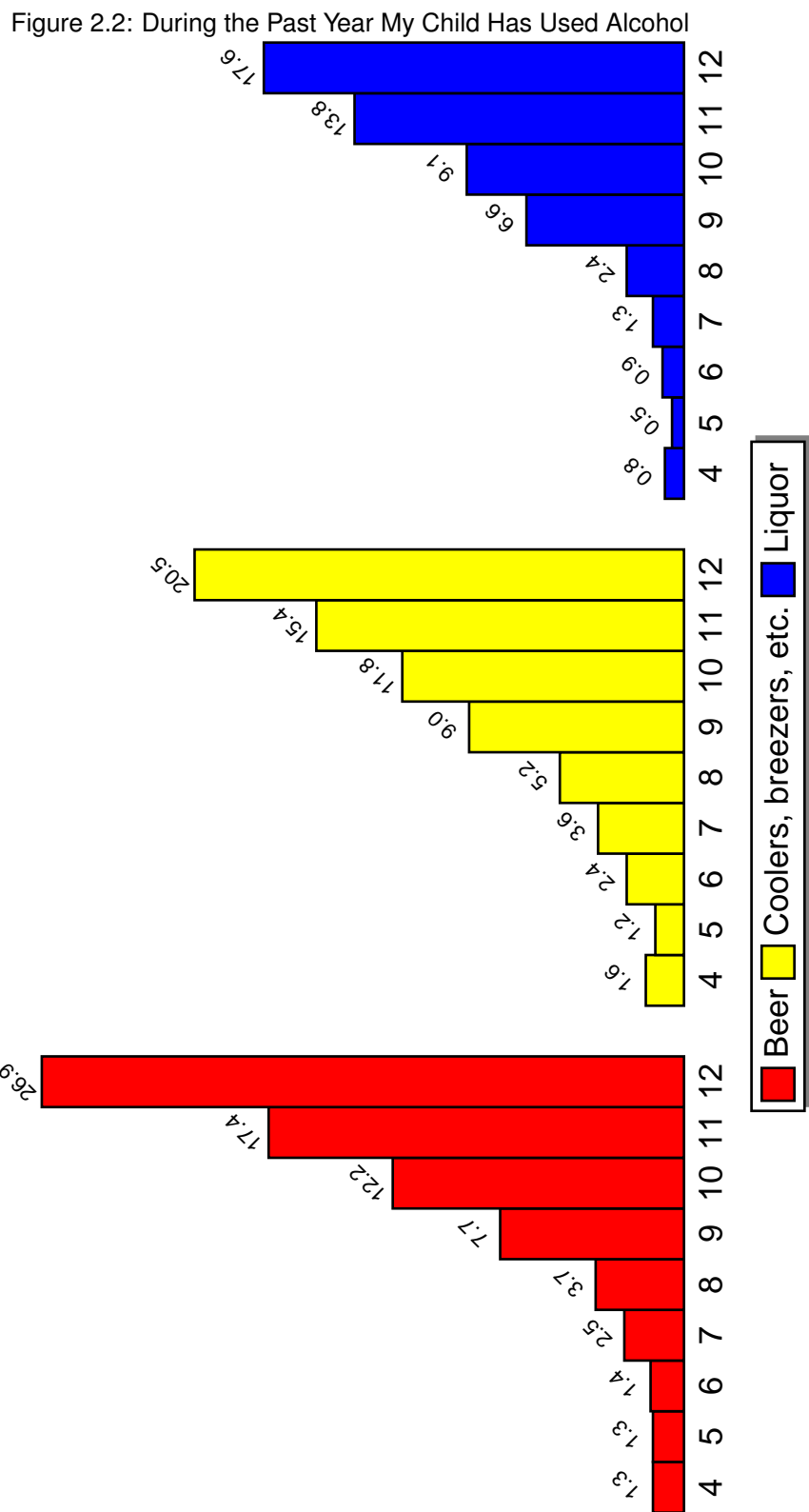
# **Standard Graphics**

# During the Past Year My Child Has Used Tobacco

Figure 2.1: During the Past Year My Child Has Used Tobacco

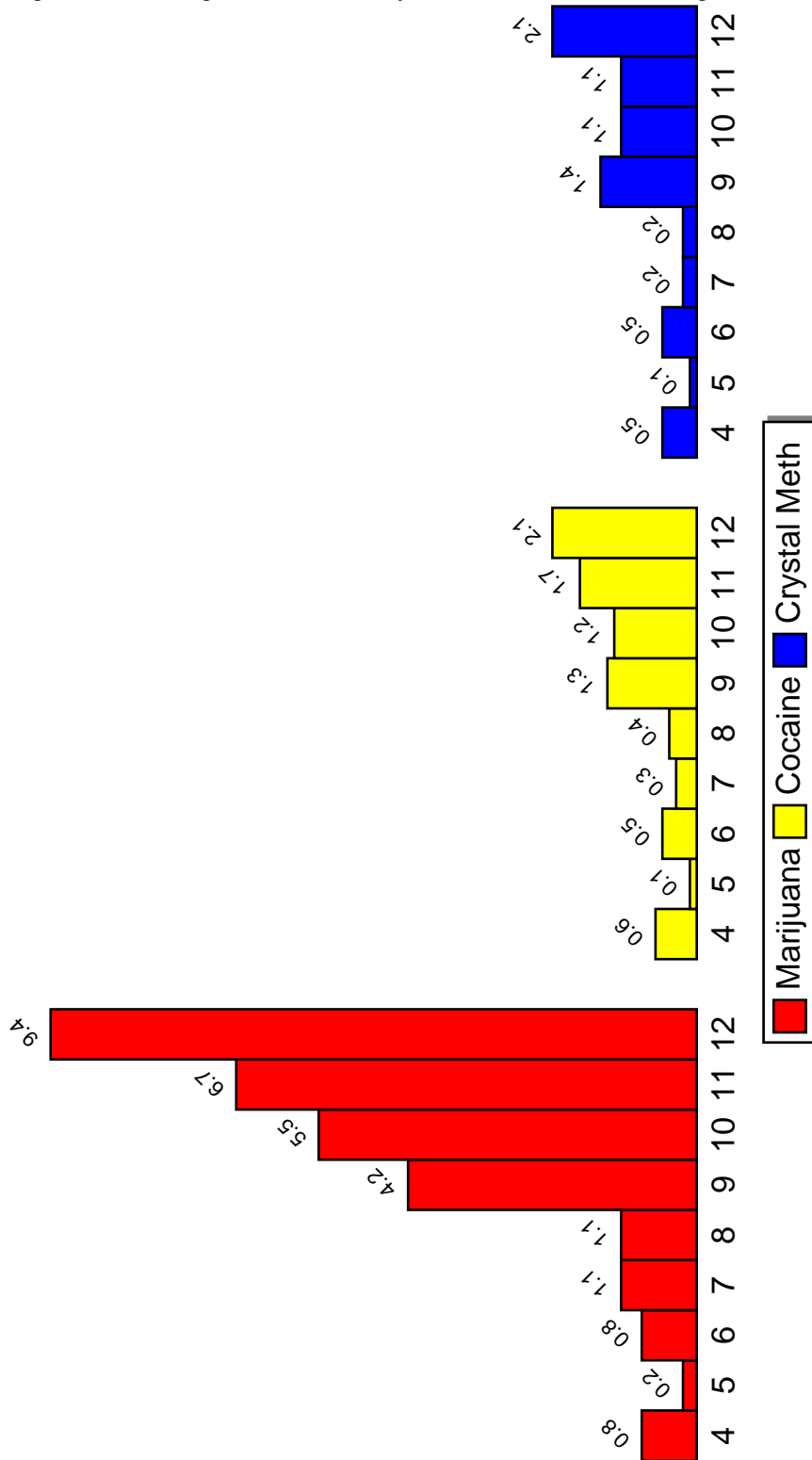


# During the Past Year My Child Has Used Alcohol



# During the Past Year My Child Has Used Illicit Drugs

Figure 2.3: During the Past Year My Child Has Used Illicit Drugs



## Chapter 3

# Percentage Tables

This chapter contains your parent survey results in tabular form. Each table corresponds to an item on the questionnaire. The *N of Valid* column contains the number of parents responding to the item and the *N of Missing* column contains the number of parents not responding to the item. The remaining columns contain the percentages of parents responding to the particular response categories.

The percentage tables of the report appear in the same order as corresponding questions on the questionnaire. The Table of Contents contains the percentage tables by section and gives the page number where each section is located. The List of Tables contains the location of each individual table.

### 3.1 Parent Demographics

Table 3.1: Relation To Child

Grade Level	N of Valid	N of Miss	Mother/Stepmother	Father/Stepfather	Grandmother	Grandfather	Guardian	Other
4th	1551	19	85.0	8.5	3.4	0.2	2.3	0.5
5th	1515	44	80.7	11.2	4.1	0.5	2.0	1.5
6th	1710	36	80.4	13.4	3.1	0.5	2.0	0.6
7th	1223	23	79.5	13.7	3.2	0.4	2.3	1.0
8th	1238	23	79.4	13.7	2.8	0.2	2.3	1.5
9th	897	20	77.1	15.3	2.9	0.6	2.6	1.6
10th	913	13	80.4	14.5	1.8	0.2	2.0	1.2
11th	741	11	78.1	15.7	2.3	0.3	2.4	1.2
12th	663	13	80.2	13.3	2.7	0.0	2.4	1.4
Total	10451	202	80.5	12.8	3.1	0.3	2.2	1.1

Table 3.2: Marital Status

Grade Level	N of Valid	N of Miss	Married	Separated	Divorced	Remarried	Single	Widowed
4th	1547	25	62.1	4.1	10.1	2.1	19.7	1.9
5th	1535	24	59.6	3.9	11.2	2.5	20.3	2.5
6th	1711	35	70.1	3.2	11.4	2.5	11.6	1.3
7th	1226	20	65.3	4.2	11.4	2.8	14.6	1.7
8th	1238	23	72.1	3.0	9.8	3.2	9.6	2.3
9th	897	20	67.1	3.6	12.2	4.0	10.9	2.2
10th	921	5	72.2	3.0	10.2	3.0	9.1	2.4
11th	731	21	74.8	3.0	7.9	2.2	8.1	4.0
12th	666	10	70.6	3.2	9.8	3.3	10.5	2.7
Total	10472	183	67.3	3.5	10.6	2.8	13.6	2.2

Table 3.3: Ethnic Origin

Grade Level	N of Valid	N of Miss	White	African American	Hispanic	Asian/Pacific Isle	Native American	Mixed Origin	Other
4th	1534	38	48.0	47.1	2.0	0.6	0.8	0.7	0.8
5th	1526	33	48.0	46.8	1.4	0.7	1.8	0.7	0.7
6th	1698	48	65.8	28.0	2.7	1.2	1.1	0.6	0.6
7th	1219	27	59.6	35.5	2.6	0.4	0.7	0.7	0.5
8th	1223	38	66.6	25.4	4.9	1.6	0.3	0.5	0.7
9th	888	29	62.7	32.8	2.3	1.1	0.3	0.3	0.5
10th	906	20	69.8	24.4	3.4	1.5	0.3	0.2	0.3
11th	736	16	71.2	22.7	1.9	1.6	0.5	1.2	0.8
12th	661	15	69.0	27.2	2.0	0.2	0.3	0.8	0.6
Total	10391	264	60.6	33.8	2.6	1.0	0.8	0.6	0.6

### 3.2 Student Demographics

Table 3.4: Sex Of Child

Grade Level	N of Valid	N of Miss	Male	Female
4th	1556	15	43.8	56.2
5th	1540	19	44.4	55.6
6th	1731	15	44.0	56.0
7th	1238	8	44.2	55.8
8th	1256	5	43.2	56.8
9th	905	12	42.7	57.3
10th	919	7	42.5	57.5
11th	742	10	42.9	57.1
12th	666	10	42.0	58.0
Total	10553	101	43.5	56.5

Table 3.5: Use Of Tobacco - My Child

Grade Level	N of Valid	N of Miss	Never Used	Has Tried or Is Using
4th	1543	29	98.4	1.6
5th	1532	27	98.2	1.8
6th	1714	32	97.8	2.2
7th	1213	33	96.4	3.6
8th	1236	25	95.4	4.6
9th	891	26	92.7	7.3
10th	898	28	87.0	13.0
11th	729	23	83.3	16.7
12th	661	15	78.7	21.3
Total	10417	238	93.9	6.1



Table 3.6: Use Of Alcohol - My Child

Grade Level	N of Valid	N of Miss	Never Used	Has Tried or Is Using
4th	1526	46	98.7	1.3
5th	1514	45	98.3	1.7
6th	1697	49	96.8	3.2
7th	1201	45	95.5	4.5
8th	1223	38	92.6	7.4
9th	880	37	85.3	14.7
10th	895	31	76.4	23.6
11th	724	28	71.4	28.6
12th	641	35	55.5	44.5
Total	10301	354	89.5	10.5

Table 3.7: Use Of Drugs - My Child

Grade Level	N of Valid	N of Miss	Never Used	Has Tried or Is Using
4th	1522	50	99.5	0.5
5th	1505	54	99.4	0.6
6th	1698	48	99.4	0.6
7th	1202	44	98.5	1.5
8th	1216	45	98.5	1.5
9th	882	35	95.2	4.8
10th	888	38	94.3	5.7
11th	722	30	92.8	7.2
12th	647	29	87.9	12.1
Total	10282	373	97.2	2.8

### 3.3 Student Information

Table 3.8: My Child Makes Good Grades In School

Grade Level	N of Valid	N of Miss	Never	Seldom	Sometimes	Often	A Lot
4th	1559	13	0.5	1.7	16.4	29.3	52.0
5th	1539	20	0.1	1.4	18.4	29.4	50.7
6th	1732	14	0.3	1.2	17.5	27.8	53.2
7th	1233	13	0.8	2.4	20.8	27.4	48.6
8th	1256	5	0.1	2.0	17.8	26.9	53.2
9th	911	6	1.0	1.4	23.6	27.4	46.5
10th	920	6	0.8	2.5	16.4	30.4	49.9
11th	741	11	0.7	2.2	17.1	31.3	48.7
12th	672	4	1.2	2.1	14.6	25.6	56.5
Total	10563	92	0.5	1.8	18.1	28.4	51.2

Table 3.9: My Child Gets Into Trouble At School

Grade Level	N of Valid	N of Miss	Never	Seldom	Sometimes	Often	A Lot
4th	1560	12	46.3	33.4	16.7	2.6	1.0
5th	1543	16	42.9	35.9	18.0	2.1	1.0
6th	1736	10	51.5	34.2	12.4	1.4	0.6
7th	1232	14	47.7	35.8	11.9	2.5	2.0
8th	1257	4	52.2	34.3	10.9	2.0	0.6
9th	908	9	53.0	31.4	11.1	3.0	1.5
10th	921	5	58.1	29.1	9.9	2.0	1.0
11th	741	11	60.9	30.1	7.3	1.1	0.7
12th	674	2	68.4	22.3	7.1	1.6	0.6
Total	10572	83	51.6	32.8	12.6	2.1	1.0

Table 3.10: My Child Attends Church, Synagogue, Etc.

Grade Level	N of Valid	N of Miss	Never	Seldom	Sometimes	Often	A Lot
4th	1552	20	4.9	7.5	20.9	20.9	45.8
5th	1543	16	4.7	8.9	20.3	20.5	45.5
6th	1734	12	4.7	9.3	19.7	20.1	46.3
7th	1231	15	4.6	10.2	20.1	19.3	45.7
8th	1253	8	4.8	7.6	19.1	22.0	46.5
9th	905	12	5.9	13.5	19.7	19.6	41.4
10th	919	7	6.5	12.1	19.0	18.1	44.3
11th	741	11	7.2	12.7	20.9	18.1	41.2
12th	672	4	9.4	12.5	19.2	18.3	40.6
Total	10550	105	5.5	9.9	19.9	19.9	44.7

Table 3.11: I Set Clear Rules For My Child

Grade Level	N of Valid	N of Miss	Never	Seldom	Sometimes	Often	A Lot
4th	1547	25	0.6	0.6	4.7	27.3	66.7
5th	1541	18	0.1	0.6	4.9	24.3	70.0
6th	1721	25	0.2	0.7	3.8	27.1	68.1
7th	1226	20	0.5	0.9	6.3	26.8	65.6
8th	1249	12	0.4	0.9	5.0	28.8	64.9
9th	905	12	0.9	1.8	6.9	27.7	62.8
10th	913	13	1.3	1.4	6.9	31.3	59.0
11th	740	12	1.2	1.4	6.8	29.7	60.9
12th	665	11	2.6	1.7	8.1	31.6	56.1
Total	10507	148	0.7	1.0	5.5	27.8	65.0

Table 3.12: I Punish My Child When He/She Breaks The Rules

Grade Level	N of Valid	N of Miss	Never	Seldom	Sometimes	Often	A Lot
4th	1550	22	1.1	3.2	15.2	41.4	39.2
5th	1531	28	0.9	3.3	14.6	40.3	40.9
6th	1714	32	0.8	2.0	17.2	40.3	39.7
7th	1217	29	1.2	3.5	18.4	38.3	38.6
8th	1237	24	1.0	3.2	18.5	40.4	36.9
9th	895	22	2.6	4.6	18.4	39.0	35.4
10th	909	17	2.0	5.7	17.3	41.4	33.7
11th	719	33	2.5	5.3	18.4	40.1	33.8
12th	660	16	2.7	3.9	24.4	38.6	30.3
Total	10432	223	1.4	3.6	17.5	40.1	37.4

Table 3.13: I Talk To My Child About The Harmful Effects Of Using Tobacco, Alcohol And Drugs

Grade Level	N of Valid	N of Miss	Never	Seldom	Sometimes	Often	A Lot
4th	1561	11	1.0	3.3	16.1	28.1	51.6
5th	1548	11	1.1	2.5	15.1	26.5	54.9
6th	1738	8	0.9	2.5	13.3	30.2	53.0
7th	1237	9	1.1	2.5	12.0	29.2	55.2
8th	1256	5	0.8	2.2	13.4	30.7	52.9
9th	910	7	2.4	6.2	15.5	27.5	48.5
10th	920	6	2.8	3.4	17.1	30.3	46.4
11th	737	15	3.3	4.1	12.6	30.1	49.9
12th	673	3	3.6	5.2	15.5	26.3	49.5
Total	10580	75	1.6	3.3	14.4	28.8	51.9

Table 3.14: Teachers Talk To Students About The Harmful Effects Of Using Tobacco, Alcohol And Drugs

Grade Level	N of Valid	N of Miss	Never	Seldom	Sometimes	Often	A Lot
4th	1508	64	1.8	5.9	30.8	33.6	27.9
5th	1488	71	1.6	6.5	30.8	33.4	27.8
6th	1699	47	1.8	6.5	33.0	32.8	26.0
7th	1200	46	3.2	7.7	31.7	33.4	24.1
8th	1224	37	2.4	7.5	36.3	32.4	21.5
9th	880	37	4.4	13.4	36.8	27.7	17.6
10th	892	34	4.5	12.8	40.0	28.8	13.9
11th	715	37	4.3	10.3	41.1	28.8	15.4
12th	649	27	5.5	12.2	38.8	26.5	16.9
Total	10255	400	2.9	8.4	34.5	31.6	22.7

Table 3.15: Our School Works With Parents Regarding Drug Abuse Prevention

Grade Level	N of Valid	N of Miss	Never	Seldom	Sometimes	Often	A Lot
4th	1482	90	8.6	13.2	27.1	28.1	23.0
5th	1466	93	8.9	14.3	28.2	25.4	23.1
6th	1654	92	8.2	12.5	30.0	28.4	20.9
7th	1178	68	10.2	12.2	32.4	27.7	17.5
8th	1197	64	10.4	13.6	32.2	27.8	16.0
9th	862	55	13.1	17.2	29.1	27.6	13.0
10th	880	46	14.1	19.7	29.9	25.7	10.7
11th	711	41	13.5	16.6	30.5	25.7	13.6
12th	647	29	14.4	18.5	31.1	22.4	13.6
Total	10077	578	10.6	14.7	29.9	26.9	18.0

Table 3.16: Law Enforcement Is Doing A Good Job In Keeping Alcohol Away From Students

Grade Level	N of Valid	N of Miss	Never	Seldom	Sometimes	Often	A Lot
4th	1502	70	5.0	12.5	32.0	27.0	23.6
5th	1479	80	4.0	13.2	34.3	25.6	22.9
6th	1676	70	3.8	13.3	33.7	27.7	21.5
7th	1198	48	5.8	14.9	33.0	27.5	18.9
8th	1214	47	6.3	14.3	36.1	27.5	15.9
9th	879	38	8.9	22.0	33.4	23.4	12.3
10th	886	40	8.9	21.8	37.4	21.9	10.0
11th	715	37	9.7	22.0	35.8	22.2	10.3
12th	656	20	9.6	25.3	34.9	19.7	10.5
Total	10205	450	6.2	16.3	34.3	25.5	17.8

Table 3.17: Law Enforcement Is Doing A Good Job In Keeping Drugs Away From Students

Grade Level	N of Valid	N of Miss	Never	Seldom	Sometimes	Often	A Lot
4th	1500	72	5.2	13.5	32.3	25.3	23.6
5th	1472	87	4.6	14.1	35.1	23.6	22.6
6th	1671	75	4.2	13.6	33.2	28.6	20.3
7th	1186	60	7.0	14.9	33.9	26.0	18.2
8th	1208	53	7.0	15.3	35.7	26.6	15.5
9th	872	45	9.9	21.7	35.0	21.7	11.8
10th	888	38	8.8	22.7	36.5	21.5	10.5
11th	712	40	10.5	21.8	38.1	19.0	10.7
12th	653	23	12.1	23.6	35.1	20.4	8.9
Total	10162	493	6.9	16.7	34.6	24.4	17.3

Table 3.18: I Am Afraid My Child Will Be Hurt At School

Grade Level	N of Valid	N of Miss	Never	Seldom	Sometimes	Often	A Lot
4th	1541	31	32.6	33.7	24.7	5.6	3.4
5th	1522	37	31.3	34.7	26.1	5.0	2.9
6th	1712	34	29.4	36.9	25.1	5.5	3.1
7th	1215	31	27.6	37.1	25.3	5.5	4.5
8th	1233	28	28.8	37.4	24.6	5.5	3.7
9th	899	18	33.8	34.3	24.4	4.7	2.9
10th	911	15	33.5	34.8	24.7	4.2	2.9
11th	737	15	36.0	37.9	19.3	3.9	3.0
12th	661	15	39.2	36.5	17.7	4.4	2.3
Total	10431	224	31.7	35.8	24.2	5.1	3.2

Table 3.19: My Child Takes Part In Gang Activities

Grade Level	N of Valid	N of Miss	Never	Seldom	Sometimes	Often	A Lot
4th	1539	33	95.9	1.6	0.9	0.6	1.0
5th	1518	41	96.8	1.4	0.9	0.3	0.6
6th	1719	27	97.0	1.0	0.6	0.5	0.8
7th	1223	23	95.3	1.5	1.3	1.1	0.9
8th	1239	22	96.7	1.2	0.6	0.6	1.0
9th	901	16	94.0	1.9	2.4	0.4	1.2
10th	908	18	95.2	1.0	1.3	1.2	1.3
11th	732	20	95.4	1.6	1.0	1.1	1.0
12th	665	11	94.4	2.0	1.5	0.9	1.2
Total	10444	211	95.9	1.4	1.1	0.7	0.9

Table 3.20: My Child Has Been Threatened With A Gun, Knife Or Club At School

Grade Level	N of Valid	N of Miss	Never	Seldom	Sometimes	Often	A Lot
4th	1561	11	96.2	1.9	1.0	0.4	0.6
5th	1544	15	97.2	1.7	0.6	0.1	0.5
6th	1734	12	96.4	2.0	1.0	0.2	0.3
7th	1235	11	95.2	2.1	1.9	0.6	0.2
8th	1252	9	95.4	2.5	1.3	0.4	0.5
9th	910	7	92.4	3.0	2.5	1.2	0.9
10th	919	7	93.4	2.9	1.7	0.8	1.2
11th	742	10	94.2	3.0	1.3	0.8	0.7
12th	674	2	92.7	3.3	1.9	0.7	1.3
Total	10571	84	95.2	2.3	1.4	0.5	0.6

Table 3.21: A Student Has Threatened To Hit, Slap Or Kick My Child

Grade Level	N of Valid	N of Miss	Never	Seldom	Sometimes	Often	A Lot
4th	1553	19	52.6	24.1	16.2	4.5	2.6
5th	1534	25	53.5	24.4	17.1	2.5	2.4
6th	1725	21	56.7	23.3	14.3	3.7	2.1
7th	1223	23	55.5	23.6	14.5	3.8	2.6
8th	1240	21	60.5	23.4	11.0	3.0	2.2
9th	905	12	62.9	21.4	9.7	3.0	3.0
10th	909	17	66.4	20.2	8.4	2.9	2.1
11th	741	11	67.3	19.3	9.3	2.6	1.5
12th	666	10	68.8	19.5	8.3	2.0	1.5
Total	10496	159	58.8	22.7	13.0	3.2	2.3

Table 3.22: Our School Sets Clear Rules On Using Drugs At School

Grade Level	N of Valid	N of Miss	Never	Seldom	Sometimes	Often	A Lot
4th	1524	48	2.5	2.6	7.7	27.1	60.1
5th	1512	47	2.1	2.5	8.2	26.2	61.0
6th	1707	39	1.9	2.1	7.3	25.3	63.4
7th	1206	40	3.2	3.9	8.3	27.3	57.4
8th	1238	23	3.8	4.1	8.8	28.8	54.4
9th	895	22	5.0	6.1	12.8	27.8	48.2
10th	913	13	4.9	6.1	13.3	30.4	45.2
11th	736	16	5.2	5.4	11.7	29.2	48.5
12th	661	15	7.1	4.7	11.6	26.2	50.4
Total	10392	263	3.5	3.8	9.4	27.3	56.0

Table 3.23: Our School Sets Clear Rules On Bullying Or Threatening Behavior

Grade Level	N of Valid	N of Miss	Never	Seldom	Sometimes	Often	A Lot
4th	1523	49	3.5	6.4	16.9	27.4	45.8
5th	1521	38	3.3	6.2	16.0	26.7	47.7
6th	1701	45	2.9	5.8	16.6	28.9	45.7
7th	1210	36	4.5	7.0	17.3	27.9	43.4
8th	1232	29	4.5	7.4	17.5	32.5	38.1
9th	894	23	6.7	9.3	20.0	27.6	36.4
10th	906	20	7.1	8.9	23.0	28.7	32.3
11th	730	22	5.3	9.2	22.3	28.4	34.8
12th	662	14	8.0	9.7	18.6	29.6	34.1
Total	10379	276	4.6	7.4	18.1	28.5	41.4

Table 3.24: I See Ads On TV That Encourage Me To Talk To My Child About Drug Use

Grade Level	N of Valid	N of Miss	Never	Seldom	Sometimes	Often	A Lot
4th	1545	27	2.5	4.2	20.3	29.1	43.9
5th	1528	31	1.8	4.3	22.2	30.0	41.7
6th	1723	23	1.4	4.5	20.4	34.0	39.8
7th	1221	25	2.5	4.5	20.8	31.8	40.4
8th	1242	19	1.8	5.6	22.1	36.8	33.7
9th	902	15	4.7	5.9	23.3	32.6	33.6
10th	911	15	3.3	7.1	26.2	33.9	29.4
11th	738	14	4.1	5.8	23.7	35.6	30.8
12th	668	8	4.5	5.4	24.4	35.9	29.8
Total	10478	177	2.6	5.1	22.1	32.9	37.3

Table 3.25: My Child Participates In Community Activities Such as Scouts, Rec. Teams, Youth Clubs, Etc.

Grade Level	N of Valid	N of Miss	Never	Seldom	Sometimes	Often	A Lot
4th	1547	25	14.5	12.9	21.8	20.7	30.1
5th	1540	19	13.1	12.9	21.8	21.2	31.1
6th	1729	17	10.9	11.2	20.2	22.4	35.2
7th	1225	21	13.0	12.7	20.2	21.1	33.0
8th	1245	16	11.3	12.6	20.2	23.3	32.6
9th	911	6	16.9	14.6	19.6	21.2	27.7
10th	918	8	13.8	12.7	22.5	22.7	28.2
11th	742	10	13.7	13.6	19.5	22.9	30.2
12th	668	8	12.9	13.2	19.0	21.9	33.1
Total	10525	130	13.1	12.8	20.7	21.9	31.5

Table 3.26: My Child Participates In School Activities Such as Band, Clubs, Etc.

Grade Level	N of Valid	N of Miss	Never	Seldom	Sometimes	Often	A Lot
4th	1526	46	30.1	18.3	22.8	15.8	13.0
5th	1508	51	25.5	18.0	23.3	16.4	16.7
6th	1703	43	14.4	12.4	19.9	21.7	31.5
7th	1225	21	16.0	10.0	17.6	21.4	34.9
8th	1240	21	12.3	10.0	16.8	23.7	37.3
9th	901	16	16.2	11.0	17.0	21.1	34.7
10th	910	16	12.5	10.0	19.6	20.3	37.6
11th	730	22	12.1	10.0	17.3	21.8	38.9
12th	665	11	12.8	8.4	15.5	19.4	43.9
Total	10408	247	18.0	12.8	19.4	20.0	29.9

Table 3.27: The School Has Security (Police) Officer

Grade Level	N of Valid	N of Miss	Yes	No
4th	1504	68	41.9	58.1
5th	1499	60	45.2	54.8
6th	1662	84	43.7	56.3
7th	1184	62	53.9	46.1
8th	1203	58	46.1	53.9
9th	872	45	64.7	35.3
10th	874	52	54.0	46.0
11th	723	29	65.3	34.7
12th	645	31	59.5	40.5
Total	10166	489	50.3	49.7



Table 3.28: A Security (Police) Officer Can Prevent Violence At School

Grade Level	N of Valid	N of Miss	Yes	No
4th	1479	91	61.0	39.0
5th	1486	73	63.6	36.4
6th	1644	102	61.5	38.5
7th	1176	70	65.3	34.7
8th	1184	77	57.9	42.1
9th	868	49	68.0	32.0
10th	871	55	60.7	39.3
11th	714	38	65.7	34.3
12th	638	38	63.8	36.2
Total	10060	593	62.7	37.3

Table 3.29: Every School Needs A Security (Police) Officer

Grade Level	N of Valid	N of Miss	Yes	No
4th	1532	40	81.3	18.7
5th	1517	42	82.3	17.7
6th	1694	52	79.8	20.2
7th	1205	41	83.9	16.1
8th	1224	37	75.8	24.2
9th	883	34	80.6	19.4
10th	900	26	75.1	24.9
11th	728	24	79.7	20.3
12th	652	24	78.4	21.6
Total	10335	320	80.0	20.0

Table 3.30: My Child Has Skipped School Without My Permission

Grade Level	N of Valid	N of Miss	Yes	No
4th	1537	33	1.8	98.2
5th	1526	33	2.3	97.7
6th	1719	27	2.2	97.8
7th	1215	31	3.0	97.0
8th	1237	24	2.6	97.4
9th	898	19	6.7	93.3
10th	908	18	8.7	91.3
11th	734	18	10.8	89.2
12th	662	14	15.3	84.7
Total	10436	217	4.7	95.3

### 3.4 Community Information

Table 3.31: Drug And Alcohol Use Is A Big Problem Facing Youth In My Community

Grade Level	N of Valid	N of Miss	Never	Seldom	Sometimes	Often	A Lot
4th	1535	37	10.7	12.1	23.6	22.1	31.4
5th	1518	41	9.9	11.5	23.6	22.5	32.5
6th	1717	29	7.9	10.8	26.3	27.0	28.1
7th	1222	24	7.9	11.7	23.5	25.1	31.8
8th	1234	27	5.9	9.5	24.6	27.9	32.2
9th	903	14	8.7	9.1	25.1	26.0	31.0
10th	915	11	6.2	9.5	25.1	28.9	30.3
11th	739	13	5.3	7.6	21.0	31.8	34.4
12th	664	12	4.4	7.4	26.4	30.0	31.9
Total	10447	208	7.9	10.3	24.4	26.1	31.3

Table 3.32: Youth Violence Is A Big Problem In My Community

Grade Level	N of Valid	N of Miss	Never	Seldom	Sometimes	Often	A Lot
4th	1524	48	17.5	29.0	28.4	11.1	14.0
5th	1501	58	16.2	27.5	30.4	11.9	14.0
6th	1701	45	14.5	34.1	29.0	12.2	10.2
7th	1212	34	13.5	30.6	30.4	13.3	12.1
8th	1224	37	12.6	33.0	29.5	13.2	11.8
9th	892	25	14.7	31.1	30.7	11.2	12.3
10th	913	13	11.4	36.6	30.3	12.0	9.6
11th	737	15	10.4	33.5	33.2	11.8	11.0
12th	663	13	11.6	35.9	28.8	13.0	10.7
Total	10367	288	14.1	31.9	29.9	12.2	12.0

Table 3.33: My Child Has Friends Who Drink Alcohol

Grade Level	N of Valid	N of Miss	Never	Seldom	Sometimes	Often	A Lot
4th	1521	51	92.1	4.6	1.6	0.7	0.9
5th	1498	61	91.6	5.3	2.3	0.4	0.3
6th	1701	45	86.2	7.9	3.5	0.9	1.4
7th	1193	53	74.2	15.1	6.2	2.5	2.0
8th	1223	38	62.9	17.9	13.3	3.6	2.3
9th	883	34	47.1	21.6	20.4	6.3	4.5
10th	897	29	32.2	22.5	27.9	10.6	6.8
11th	720	32	26.9	21.4	24.0	15.8	11.8
12th	650	26	18.8	17.7	33.5	15.8	14.2
Total	10286	369	67.2	13.1	11.5	4.6	3.6

Table 3.34: It Would Be Okay With Me For My Child To Use Alcohol If He/She Would Not Use Other Drugs

Grade Level	N of Valid	N of Miss	Never	Seldom	Sometimes	Often	A Lot
4th	1542	30	97.0	1.3	0.9	0.3	0.5
5th	1529	30	97.7	0.9	1.1	0.1	0.3
6th	1717	29	96.6	1.9	0.6	0.3	0.6
7th	1224	22	95.4	2.4	1.1	0.4	0.7
8th	1245	16	94.1	3.4	1.2	0.7	0.6
9th	903	14	89.7	6.1	1.8	0.9	1.6
10th	915	11	87.1	6.3	3.9	1.3	1.3
11th	738	14	85.5	7.7	3.9	1.1	1.8
12th	665	11	79.2	11.4	6.0	1.4	2.0
Total	10478	177	93.1	3.7	1.8	0.6	0.9

Table 3.35: Beer Ads Encourage Underage Drinking

Grade Level	N of Valid	N of Miss	Never	Seldom	Sometimes	Often	A Lot
4th	1531	41	19.2	9.7	25.3	17.0	28.7
5th	1505	54	18.0	10.3	27.9	17.7	26.0
6th	1707	39	15.3	11.2	29.5	19.0	25.0
7th	1213	33	16.1	11.0	30.5	18.5	24.0
8th	1229	32	13.3	9.7	29.7	21.2	26.0
9th	903	14	17.5	12.0	27.6	18.1	24.9
10th	902	24	14.0	10.9	31.4	19.6	24.2
11th	736	16	12.1	9.6	26.2	20.8	31.3
12th	662	14	12.2	9.4	29.5	22.5	26.4
Total	10388	267	15.8	10.5	28.6	19.1	26.2

Table 3.36: My Child Has Friends Who Use Tobacco

Grade Level	N of Valid	N of Miss	Never	Seldom	Sometimes	Often	A Lot
4th	1536	36	91.6	4.4	2.3	0.8	0.9
5th	1501	58	90.0	4.9	4.1	0.5	0.6
6th	1708	38	85.1	7.8	4.3	1.3	1.5
7th	1208	38	73.3	14.2	8.0	3.0	1.5
8th	1233	28	64.5	15.7	12.2	4.0	3.7
9th	891	26	51.6	20.4	15.3	6.5	6.2
10th	899	27	40.4	19.2	21.8	10.7	7.9
11th	725	27	31.9	20.6	24.0	13.1	10.5
12th	660	16	27.7	20.5	25.3	14.4	12.1
Total	10361	294	68.8	12.3	10.5	4.5	3.8

Table 3.37: My Child Has Friends Who Use Drugs

Grade Level	N of Valid	N of Miss	Never	Seldom	Sometimes	Often	A Lot
4th	1531	41	95.8	2.1	1.0	0.4	0.7
5th	1492	67	95.5	2.6	1.4	0.3	0.2
6th	1700	46	93.5	3.7	1.4	0.4	0.9
7th	1202	44	85.9	7.6	4.0	1.2	1.4
8th	1223	38	77.2	13.2	6.1	1.6	2.0
9th	888	29	64.6	18.4	9.2	4.2	3.6
10th	887	39	57.9	20.6	13.1	4.2	4.2
11th	713	39	52.0	19.8	17.4	5.8	5.0
12th	644	32	45.0	25.0	16.8	7.6	5.6
Total	10280	375	79.8	10.1	6.0	2.1	2.1

Table 3.38: It Would Be Okay With Me For My Child To Smoke A Little Pot If He/She Would Leave Other Drugs Alone

Grade Level	N of Valid	N of Miss	Never	Seldom	Sometimes	Often	A Lot
4th	1545	27	97.9	0.9	0.4	0.3	0.5
5th	1530	29	98.8	0.5	0.5	0.1	0.1
6th	1721	25	98.7	0.7	0.2	0.2	0.2
7th	1229	17	97.6	0.7	0.6	0.2	1.0
8th	1248	13	97.8	1.0	0.6	0.3	0.2
9th	904	13	95.2	1.5	1.3	0.4	1.4
10th	914	12	94.0	3.0	1.9	0.8	0.4
11th	740	12	94.1	2.7	1.1	1.1	1.1
12th	669	7	92.5	3.9	1.8	1.0	0.7
Total	10500	155	96.9	1.4	0.8	0.4	0.6

Table 3.39: My Child Has Had 5 Or More Glasses Of Beer, Coolers Or Liquor Within A Few Hours

Grade Level	N of Valid	N of Miss	Never	Seldom	Sometimes	Often	A Lot
4th	1545	27	98.1	0.8	0.5	0.3	0.4
5th	1530	29	99.2	0.3	0.5	0.1	0.0
6th	1720	26	98.8	0.3	0.4	0.2	0.3
7th	1227	19	97.8	0.7	0.4	0.4	0.7
8th	1243	18	97.4	1.3	0.8	0.2	0.3
9th	906	11	94.7	2.1	1.3	0.6	1.3
10th	916	10	91.8	3.7	2.2	1.1	1.2
11th	734	18	91.3	4.2	1.6	1.1	1.8
12th	664	12	87.8	5.6	3.8	1.2	1.7
Total	10485	170	96.3	1.6	1.0	0.4	0.7

Table 3.40: The Alcohol Industry Does A Good Job Of Discouraging Underage Drinking.

Grade Level	N of Valid	N of Miss	Never	Seldom	Sometimes	Often	A Lot
4th	1529	43	36.2	25.6	24.5	6.7	7.0
5th	1513	46	35.1	26.6	25.2	6.8	6.3
6th	1714	32	31.9	29.5	26.8	6.2	5.5
7th	1214	32	32.0	27.4	27.6	5.8	7.2
8th	1232	29	34.7	29.4	26.1	5.4	4.4
9th	894	23	36.8	30.1	22.3	5.5	5.4
10th	908	18	33.4	31.9	26.3	5.5	2.9
11th	733	19	34.9	33.6	22.5	6.1	2.9
12th	665	11	37.6	31.9	21.8	5.9	2.9
Total	10402	253	34.5	28.9	25.2	6.1	5.3

### 3.5 Impressions About Drug Use

Table 3.41: Harmfulness Of Use – Cigarettes

Grade Level	N of Valid	N of Miss	No Harm	Some Harm	Harmful	Very Harmful
4th	1551	21	0.9	1.4	8.1	89.6
5th	1533	26	0.7	1.6	8.0	89.7
6th	1724	22	0.4	1.5	8.2	89.9
7th	1231	15	1.5	1.9	9.7	86.8
8th	1246	15	0.8	1.8	8.6	88.8
9th	907	10	2.1	2.1	11.5	84.3
10th	919	7	1.3	2.4	12.2	84.1
11th	743	9	1.1	2.3	10.6	86.0
12th	668	8	1.3	3.3	8.7	86.7
Total	10522	133	1.0	1.9	9.2	87.9

Table 3.42: Harmfulness Of Use – Smokeless Tobacco (Chew, Etc.)

Grade Level	N of Valid	N of Miss	No Harm	Some Harm	Harmful	Very Harmful
4th	1550	22	1.3	1.9	11.4	85.5
5th	1529	30	1.2	2.0	10.0	86.9
6th	1717	29	0.5	2.6	11.7	85.2
7th	1225	21	1.4	2.3	13.1	83.2
8th	1243	18	0.8	1.7	12.9	84.6
9th	903	14	1.9	3.7	15.6	78.8
10th	915	11	0.9	3.1	17.7	78.4
11th	733	19	1.8	2.9	15.4	79.9
12th	667	9	1.3	3.7	13.6	81.3
Total	10482	173	1.1	2.5	13.0	83.4

Table 3.43: Harmfulness Of Use – Cigars

Grade Level	N of Valid	N of Miss	No Harm	Some Harm	Harmful	Very Harmful
4th	1547	25	0.8	2.1	10.2	86.8
5th	1531	28	0.8	1.8	9.9	87.5
6th	1717	29	0.5	1.5	11.2	86.8
7th	1226	20	1.5	2.3	11.4	84.8
8th	1237	24	0.9	2.7	10.8	85.5
9th	899	18	2.0	4.1	14.6	79.3
10th	913	13	1.1	4.2	16.4	78.3
11th	735	17	1.4	4.4	13.3	81.0
12th	664	12	1.4	4.8	14.3	79.5
Total	10469	186	1.1	2.7	11.9	84.3

Table 3.44: Harmfulness Of Use – Beer

Grade Level	N of Valid	N of Miss	No Harm	Some Harm	Harmful	Very Harmful
4th	1542	30	1.1	4.0	12.2	82.7
5th	1532	27	0.9	4.5	10.8	83.7
6th	1716	30	0.5	3.9	15.4	80.2
7th	1218	28	2.1	4.8	15.8	77.3
8th	1236	25	1.1	6.4	17.8	74.8
9th	897	20	1.8	9.9	19.3	69.0
10th	912	14	1.4	7.9	22.0	68.6
11th	733	19	1.4	9.5	22.1	67.0
12th	663	13	1.8	10.6	24.6	63.0
Total	10449	206	1.2	6.1	16.5	76.1

Table 3.45: Harmfulness Of Use – Coolers, Breezers, Hard Lemonades, Etc.

Grade Level	N of Valid	N of Miss	No Harm	Some Harm	Harmful	Very Harmful
4th	1538	34	1.8	5.6	12.1	80.6
5th	1531	28	2.4	5.6	11.4	80.5
6th	1709	37	1.2	6.0	16.0	76.8
7th	1222	24	2.5	6.1	17.1	74.2
8th	1235	26	1.8	8.2	18.7	71.3
9th	898	19	2.8	13.3	18.6	65.4
10th	909	17	2.3	8.5	23.8	65.5
11th	733	19	3.1	9.8	22.5	64.5
12th	662	14	3.2	12.1	24.8	60.0
Total	10437	218	2.2	7.7	17.1	73.1



Table 3.46: Harmfulness Of Use – Liquor

Grade Level	N of Valid	N of Miss	No Harm	Some Harm	Harmful	Very Harmful
4th	1542	30	1.1	1.6	8.0	89.3
5th	1531	28	1.0	2.1	7.2	89.7
6th	1703	43	0.5	2.0	9.7	87.8
7th	1219	27	2.1	2.1	9.4	86.5
8th	1240	21	0.7	3.1	11.0	85.2
9th	898	19	1.8	5.0	14.7	78.5
10th	906	20	1.4	3.9	17.2	77.5
11th	738	14	0.9	4.7	16.7	77.6
12th	662	14	1.7	3.6	19.6	75.1
Total	10439	216	1.2	2.8	11.4	84.6

Table 3.47: Harmfulness Of Use – Marijuana

Grade Level	N of Valid	N of Miss	No Harm	Some Harm	Harmful	Very Harmful
4th	1542	30	1.0	0.9	5.2	92.9
5th	1538	21	0.8	1.0	4.6	93.7
6th	1715	31	0.5	0.9	5.0	93.6
7th	1223	23	1.5	0.8	6.3	91.4
8th	1242	19	0.8	1.7	6.0	91.5
9th	900	17	2.3	3.1	7.7	86.9
10th	912	14	1.4	1.9	11.0	85.7
11th	731	21	1.8	2.7	10.5	85.0
12th	665	11	1.7	4.7	11.9	81.8
Total	10468	187	1.2	1.6	6.8	90.4

Table 3.48: Harmfulness Of Use – Cocaine (Crack, Etc)

Grade Level	N of Valid	N of Miss	No Harm	Some Harm	Harmful	Very Harmful
4th	1542	30	0.9	0.1	1.8	97.1
5th	1532	27	0.8	0.0	1.4	97.8
6th	1715	31	0.3	0.4	1.5	97.8
7th	1221	25	1.5	0.1	2.0	96.4
8th	1239	22	0.5	0.3	1.6	97.6
9th	897	20	1.4	0.6	2.5	95.5
10th	915	11	1.1	0.3	3.5	95.1
11th	735	17	0.8	0.8	2.0	96.3
12th	665	11	1.5	1.2	2.3	95.0
Total	10461	194	0.9	0.3	1.9	96.8

Table 3.49: Harmfulness Of Use – Crystal Meth (Ice, Crank, Etc.)

Grade Level	N of Valid	N of Miss	No Harm	Some Harm	Harmful	Very Harmful
4th	1538	31	0.8	0.1	1.3	97.8
5th	1532	27	0.7	0.0	1.3	98.0
6th	1709	37	0.2	0.6	1.2	97.9
7th	1215	31	1.4	0.2	1.6	96.8
8th	1238	23	0.5	0.3	1.3	97.9
9th	899	18	1.6	0.6	2.0	95.9
10th	913	13	1.1	0.4	3.2	95.3
11th	736	16	0.8	0.7	2.2	96.3
12th	662	14	1.4	1.1	2.1	95.5
Total	10442	210	0.9	0.4	1.7	97.1

### 3.6 During The Past Year Your Child Has Used

Table 3.50: Percent Of Use – Cigarettes

Grade Level	N of Valid	N of Miss	Did Not Use	1-6 Times a Year	1-2 Times a Month	1-7 Times a Week
4th	1533	38	98.4	0.6	0.3	0.7
5th	1508	51	98.7	1.2	0.1	0.0
6th	1706	40	98.5	0.8	0.2	0.5
7th	1221	25	97.5	1.3	0.7	0.4
8th	1230	31	96.3	2.8	0.2	0.7
9th	893	24	94.5	2.6	0.6	2.4
10th	905	21	91.7	3.8	2.0	2.5
11th	729	23	89.0	4.8	1.8	4.4
12th	656	20	85.8	6.9	1.7	5.6
Total	10381	273	95.8	2.2	0.6	1.4

Table 3.51: Percent Of Use – Smokeless Tobacco (Chew, Etc.)

Grade Level	N of Valid	N of Miss	Did Not Use	1-6 Times a Year	1-2 Times a Month	1-7 Times a Week
4th	1532	40	98.8	0.6	0.1	0.6
5th	1514	45	99.3	0.5	0.1	0.1
6th	1703	43	99.1	0.5	0.1	0.3
7th	1219	27	98.7	0.8	0.3	0.2
8th	1229	32	98.9	0.8	0.1	0.2
9th	890	27	97.5	1.0	0.4	1.0
10th	905	21	95.6	3.3	0.4	0.7
11th	724	28	95.3	2.6	1.0	1.1
12th	656	20	94.2	2.6	1.1	2.1
Total	10372	283	98.0	1.1	0.3	0.5

Table 3.52: Percent Of Use – Cigars

Grade Level	N of Valid	N of Miss	Did Not Use	1-6 Times a Year	1-2 Times a Month	1-7 Times a Week
4th	1529	42	99.3	0.1	0.1	0.5
5th	1516	43	99.8	0.1	0.1	0.0
6th	1706	40	99.2	0.3	0.2	0.3
7th	1220	26	99.2	0.5	0.2	0.2
8th	1226	35	99.1	0.6	0.2	0.1
9th	889	28	97.6	1.1	0.7	0.6
10th	907	19	95.8	2.6	1.0	0.6
11th	727	25	95.7	2.8	1.0	0.6
12th	657	19	92.2	4.1	2.3	1.4
Total	10377	277	98.2	1.0	0.5	0.4

Table 3.53: Percent Of Use – Beer

Grade Level	N of Valid	N of Miss	Did Not Use	1-6 Times a Year	1-2 Times a Month	1-7 Times a Week
4th	1527	44	98.7	0.7	0.1	0.6
5th	1512	47	98.7	1.3	0.0	0.0
6th	1695	51	98.6	0.7	0.4	0.3
7th	1217	29	97.5	1.9	0.3	0.3
8th	1229	32	96.3	2.8	0.6	0.2
9th	892	25	92.3	4.7	2.0	1.0
10th	905	21	87.8	8.6	2.5	1.0
11th	724	28	82.6	11.2	4.8	1.4
12th	655	21	73.1	18.5	5.6	2.7
Total	10356	298	94.0	4.1	1.3	0.6

Table 3.54: Percent Of Use – Coolers, Breezers, Hard Lemonades, Etc.

Grade Level	N of Valid	N of Miss	Did Not Use	1-6 Times a Year	1-2 Times a Month	1-7 Times a Week
4th	1527	45	98.4	0.8	0.1	0.7
5th	1512	47	98.8	1.0	0.1	0.1
6th	1700	46	97.6	1.6	0.4	0.4
7th	1220	26	96.4	2.5	0.7	0.3
8th	1226	35	94.8	4.4	0.6	0.2
9th	889	28	91.0	6.5	1.6	0.9
10th	903	23	88.2	9.0	2.2	0.7
11th	728	24	84.6	10.9	3.3	1.2
12th	649	27	79.5	14.2	4.6	1.7
Total	10354	301	94.0	4.3	1.1	0.6

Table 3.55: Percent Of Use – Liquor

Grade Level	N of Valid	N of Miss	Did Not Use	1-6 Times a Year	1-2 Times a Month	1-7 Times a Week
4th	1535	36	99.2	0.2	0.1	0.5
5th	1510	49	99.5	0.3	0.1	0.0
6th	1703	43	99.1	0.4	0.2	0.4
7th	1221	25	98.7	0.7	0.5	0.2
8th	1231	30	97.6	1.7	0.4	0.2
9th	891	26	93.4	4.2	1.1	1.3
10th	903	23	90.9	6.8	1.3	1.0
11th	726	26	86.2	9.8	3.0	1.0
12th	652	24	82.4	12.9	3.2	1.5
Total	10372	282	95.8	2.9	0.8	0.5

Table 3.56: Percent Of Use – Marijuana

Grade Level	N of Valid	N of Miss	Did Not Use	1-6 Times a Year	1-2 Times a Month	1-7 Times a Week
4th	1532	39	99.2	0.1	0.3	0.5
5th	1510	49	99.8	0.1	0.0	0.1
6th	1697	49	99.2	0.3	0.1	0.4
7th	1218	28	98.9	0.5	0.2	0.4
8th	1231	30	98.9	0.5	0.4	0.2
9th	887	30	95.8	1.7	1.4	1.1
10th	906	20	94.5	3.4	1.0	1.1
11th	726	26	93.3	4.5	1.5	0.7
12th	658	18	90.6	5.3	2.1	2.0
Total	10365	289	97.5	1.3	0.6	0.6

Table 3.57: Percent Of Use – Cocaine (Crack, Etc)

Grade Level	N of Valid	N of Miss	Did Not Use	1-6 Times a Year	1-2 Times a Month	1-7 Times a Week
4th	1532	39	99.4	0.0	0.0	0.6
5th	1511	48	99.9	0.1	0.0	0.0
6th	1700	46	99.5	0.2	0.1	0.2
7th	1219	27	99.7	0.2	0.2	0.0
8th	1230	31	99.6	0.1	0.2	0.2
9th	889	28	98.7	0.6	0.1	0.7
10th	906	20	98.8	0.8	0.1	0.3
11th	723	29	98.3	0.7	0.8	0.1
12th	657	19	97.9	0.9	0.9	0.3
Total	10367	287	99.3	0.3	0.2	0.3

Table 3.58: Percent Of Use – Crystal Meth (Ice, Crank, Etc.)

Grade Level	N of Valid	N of Miss	Did Not Use	1-6 Times a Year	1-2 Times a Month	1-7 Times a Week
4th	1523	46	99.5	0.0	0.1	0.5
5th	1512	47	99.9	0.1	0.0	0.0
6th	1693	53	99.5	0.1	0.1	0.2
7th	1215	31	99.8	0.0	0.2	0.1
8th	1226	35	99.8	0.0	0.2	0.1
9th	886	31	98.6	0.7	0.2	0.5
10th	900	26	98.9	0.4	0.4	0.2
11th	723	29	98.9	0.7	0.1	0.3
12th	655	21	97.9	0.9	0.8	0.5
Total	10333	319	99.4	0.2	0.2	0.2

### 3.7 How Easy Is It For Students In Your Child's Grade To Get

Table 3.59: How Easy Is It For Students In Your Child's Grade To Get Cigarettes

Grade Level	N of Valid	N of Miss	Cannot Get	Very Difficult	Fairly Difficult	Fairly Easy	Very Easy
4th	1509	63	43.1	21.4	13.5	15.0	7.0
5th	1473	86	39.5	19.9	14.9	17.2	8.5
6th	1662	84	28.5	18.1	19.6	22.9	11.0
7th	1188	58	23.1	14.1	17.6	29.7	15.4
8th	1182	79	17.9	11.3	16.0	36.1	18.6
9th	872	45	14.4	6.8	15.8	34.2	28.8
10th	890	36	13.4	4.9	8.9	39.9	32.9
11th	717	35	11.2	3.5	8.8	36.7	39.9
12th	647	29	6.8	3.6	7.1	28.1	54.4
Total	10140	515	25.3	13.5	14.5	27.0	19.7

Table 3.60: How Easy Is It For Students In Your Child's Grade To Get Smokeless Tobacco (Chew, Etc.)

Grade Level	N of Valid	N of Miss	Cannot Get	Very Difficult	Fairly Difficult	Fairly Easy	Very Easy
4th	1504	68	46.1	20.7	13.6	14.3	5.3
5th	1476	83	41.7	19.4	15.3	16.3	7.3
6th	1655	91	30.6	19.9	18.4	21.4	9.7
7th	1190	56	25.0	16.1	16.5	27.9	14.5
8th	1179	82	19.3	11.2	17.7	31.8	20.0
9th	864	53	17.5	7.2	15.5	33.2	26.6
10th	884	42	14.6	5.7	9.5	37.7	32.6
11th	699	53	12.7	5.0	9.2	34.6	38.5
12th	642	34	7.9	3.1	8.6	29.3	51.1
Total	10093	562	27.3	14.1	14.6	25.4	18.6

Table 3.61: How Easy Is It For Students In Your Child's Grade To Get Cigars

Grade Level	N of Valid	N of Miss	Cannot Get	Very Difficult	Fairly Difficult	Fairly Easy	Very Easy
4th	1500	72	47.9	22.4	13.1	11.5	5.1
5th	1471	88	43.2	21.7	15.6	13.8	5.7
6th	1652	94	32.8	21.4	20.2	18.3	7.3
7th	1182	64	27.1	16.8	21.2	23.9	11.1
8th	1168	93	21.6	13.9	22.3	27.7	14.5
9th	860	57	18.6	9.5	18.4	33.1	20.3
10th	879	47	15.2	7.4	11.9	39.7	25.7
11th	697	55	13.1	5.5	12.1	36.4	33.0
12th	641	35	8.0	4.5	10.9	30.6	46.0
Total	10050	605	28.9	15.7	16.8	23.6	15.0

Table 3.62: How Easy Is It For Students In Your Child's Grade To Get Beer

Grade Level	N of Valid	N of Miss	Cannot Get	Very Difficult	Fairly Difficult	Fairly Easy	Very Easy
4th	1504	68	47.6	22.1	12.7	12.1	5.5
5th	1474	85	43.8	22.0	14.4	14.6	5.2
6th	1651	95	33.2	23.3	19.3	16.8	7.5
7th	1187	59	26.1	19.5	21.1	22.5	10.7
8th	1174	87	20.3	13.9	21.8	28.4	15.6
9th	868	49	17.2	9.4	19.7	31.9	21.8
10th	880	46	13.8	7.7	16.0	36.3	26.3
11th	713	39	11.9	5.3	14.2	37.3	31.3
12th	642	34	7.6	5.5	12.5	33.2	41.3
Total	10093	562	28.4	16.4	17.1	23.3	14.9



Table 3.63: How Easy Is It For Students In Your Child's Grade To Get Coolers, Breezers, Hard Lemonades, Etc.

Grade Level	N of Valid	N of Miss	Cannot Get	Very Difficult	Fairly Difficult	Fairly Easy	Very Easy
4th	1509	63	48.2	23.0	12.4	11.3	5.2
5th	1468	91	44.7	22.1	15.3	12.7	5.2
6th	1656	90	34.5	22.9	20.2	15.6	6.8
7th	1188	58	27.9	20.0	21.4	21.0	9.8
8th	1170	91	21.0	15.4	20.9	28.0	14.6
9th	866	51	16.7	10.0	20.2	31.6	21.4
10th	883	43	14.4	8.2	15.7	37.9	23.8
11th	709	43	12.3	5.5	15.2	35.8	31.2
12th	643	33	7.9	5.6	12.3	33.7	40.4
Total	10092	563	29.1	16.9	17.3	22.5	14.2

Table 3.64: How Easy Is It For Students In Your Child's Grade To Get Liquor

Grade Level	N of Valid	N of Miss	Cannot Get	Very Difficult	Fairly Difficult	Fairly Easy	Very Easy
4th	1505	67	50.2	23.3	11.9	10.0	4.7
5th	1465	94	46.8	23.1	14.4	11.3	4.3
6th	1646	100	37.7	24.2	18.4	14.1	5.7
7th	1192	54	29.4	23.2	19.4	18.5	9.5
8th	1169	92	23.1	17.0	23.2	25.1	11.5
9th	863	54	19.0	13.7	20.5	27.2	19.6
10th	884	42	16.2	10.3	18.4	34.3	20.8
11th	714	38	12.9	7.4	18.1	34.2	27.5
12th	640	36	8.6	8.4	15.0	32.8	35.2
Total	10078	577	31.1	18.6	17.5	20.4	12.4

Table 3.65: How Easy Is It For Students In Your Child's Grade To Get Marijuana

Grade Level	N of Valid	N of Miss	Cannot Get	Very Difficult	Fairly Difficult	Fairly Easy	Very Easy
4th	1503	69	53.0	23.2	10.6	8.9	4.3
5th	1461	98	47.6	24.8	13.5	9.2	4.9
6th	1646	100	38.8	25.6	17.7	12.9	5.0
7th	1184	62	30.2	23.2	18.8	18.1	9.7
8th	1164	97	25.2	18.6	22.3	22.7	11.3
9th	862	55	19.6	11.9	21.2	27.5	19.7
10th	880	46	17.3	9.9	18.8	33.3	20.8
11th	712	40	13.5	8.6	16.4	34.6	27.0
12th	642	34	10.1	7.0	14.6	34.4	33.8
Total	10054	601	32.4	19.1	16.8	19.5	12.2

Table 3.66: How Easy Is It For Students In Your Child's Grade To Get Cocaine (Crack, Etc)

Grade Level	N of Valid	N of Miss	Cannot Get	Very Difficult	Fairly Difficult	Fairly Easy	Very Easy
4th	1507	65	56.3	24.2	9.8	6.0	3.8
5th	1459	100	51.7	25.6	11.9	7.3	3.4
6th	1645	101	44.7	27.7	15.2	8.6	3.8
7th	1182	64	34.3	27.2	18.6	12.4	7.5
8th	1167	94	31.4	24.4	22.8	14.1	7.3
9th	862	55	24.2	20.8	23.7	20.0	11.4
10th	873	53	21.5	17.8	25.7	23.3	11.8
11th	700	52	18.6	16.1	23.6	25.3	16.4
12th	635	41	14.2	13.2	22.7	29.0	20.9
Total	10030	625	37.2	23.2	17.9	13.8	7.9

Table 3.67: How Easy Is It For Students In Your Child's Grade To Get Uppers (Stimulants)

Grade Level	N of Valid	N of Miss	Cannot Get	Very Difficult	Fairly Difficult	Fairly Easy	Very Easy
4th	1501	71	55.6	23.8	10.7	6.5	3.5
5th	1458	101	50.1	25.0	12.6	8.4	4.0
6th	1647	99	43.5	25.4	17.4	10.1	3.5
7th	1182	64	33.7	24.5	20.3	13.9	7.7
8th	1162	99	29.3	23.0	22.7	17.5	7.5
9th	857	60	24.4	19.3	23.5	20.8	12.1
10th	867	59	21.0	15.2	23.5	27.7	12.6
11th	700	52	19.6	14.4	21.1	27.6	17.3
12th	634	42	14.5	12.1	21.0	30.0	22.4
Total	10008	647	36.4	21.7	18.2	15.5	8.2

Table 3.68: How Easy Is It For Students In Your Child's Grade To Get Downers (Depressants)

Grade Level	N of Valid	N of Miss	Cannot Get	Very Difficult	Fairly Difficult	Fairly Easy	Very Easy
4th	1495	77	55.6	23.3	10.6	7.2	3.3
5th	1461	98	50.1	25.1	12.5	8.5	3.9
6th	1642	104	42.3	25.6	17.1	10.8	4.2
7th	1181	65	33.2	24.7	20.9	14.0	7.2
8th	1162	99	29.2	22.2	23.1	17.9	7.7
9th	852	65	24.2	19.2	22.4	21.6	12.6
10th	861	65	20.3	15.9	23.8	26.6	13.4
11th	694	58	18.6	13.8	21.8	29.0	16.9
12th	632	44	14.1	11.9	20.9	30.4	22.8
Total	9980	675	36.0	21.6	18.2	15.9	8.3

Table 3.69: How Easy Is It For Students In Your Child's Grade To Get Inhalants (Glue, Etc)

Grade Level	N of Valid	N of Miss	Cannot Get	Very Difficult	Fairly Difficult	Fairly Easy	Very Easy
4th	1497	75	47.8	18.0	11.3	14.5	8.4
5th	1467	92	43.6	20.0	11.2	13.8	11.5
6th	1647	99	34.5	16.0	14.1	19.1	16.3
7th	1174	72	26.9	16.6	14.4	21.6	20.5
8th	1158	103	24.1	13.6	16.2	23.1	23.0
9th	857	60	21.4	11.8	16.2	22.8	27.9
10th	871	55	18.7	10.0	11.3	29.2	30.9
11th	698	54	17.8	7.7	12.6	27.2	34.7
12th	634	42	12.5	7.3	14.0	28.4	37.9
Total	10003	652	30.7	14.7	13.4	20.7	20.6

Table 3.70: How Easy Is It For Students In Your Child's Grade To Get Hallucinogens (PCP, LSD, Etc)

Grade Level	N of Valid	N of Miss	Cannot Get	Very Difficult	Fairly Difficult	Fairly Easy	Very Easy
4th	1495	77	57.9	25.0	9.0	5.4	2.6
5th	1463	96	53.0	26.7	10.7	6.5	3.1
6th	1638	108	46.9	29.0	14.4	6.3	3.3
7th	1172	74	37.0	28.2	18.6	10.7	5.5
8th	1157	104	33.8	28.3	22.2	11.1	4.7
9th	851	66	28.0	22.6	23.5	17.3	8.7
10th	855	71	23.6	22.3	25.1	18.2	10.6
11th	696	56	22.0	19.0	24.4	21.3	13.4
12th	629	47	18.0	19.6	21.8	23.7	17.0
Total	9956	699	39.6	25.5	17.3	11.4	6.3

Table 3.71: How Easy Is It For Students In Your Child's Grade To Get Heroin (Opiates)

Grade Level	N of Valid	N of Miss	Cannot Get	Very Difficult	Fairly Difficult	Fairly Easy	Very Easy
4th	1490	82	58.9	24.8	9.0	4.8	2.4
5th	1467	92	54.1	26.4	10.5	5.9	3.0
6th	1643	103	49.0	29.9	12.2	5.8	3.0
7th	1167	79	39.3	30.1	15.3	10.3	5.1
8th	1158	103	37.1	28.6	19.3	10.4	4.5
9th	854	63	29.3	25.4	23.4	14.2	7.7
10th	856	70	27.2	24.4	23.1	16.4	8.9
11th	693	59	23.4	22.5	23.4	18.5	12.3
12th	628	48	19.6	22.0	22.0	20.5	15.9
Total	9956	699	41.5	26.6	16.0	10.2	5.7

Table 3.72: How Easy Is It For Students In Your Child's Grade To Get Anabolic Steroids

Grade Level	N of Valid	N of Miss	Cannot Get	Very Difficult	Fairly Difficult	Fairly Easy	Very Easy
4th	1496	76	58.6	24.1	9.6	5.1	2.5
5th	1463	96	53.7	25.7	10.7	6.4	3.6
6th	1642	104	46.2	27.1	16.2	7.2	3.3
7th	1169	77	36.7	27.0	18.8	11.2	6.2
8th	1155	106	33.5	24.9	24.2	11.3	6.1
9th	856	61	26.4	23.5	23.8	17.2	9.1
10th	854	72	23.5	17.4	25.1	23.0	11.0
11th	689	63	20.8	18.0	25.3	22.1	13.9
12th	627	49	17.9	16.3	22.6	24.4	18.8
Total	9951	704	39.4	23.7	18.1	12.0	6.8

Table 3.73: How Easy Is It For Students In Your Child's Grade To Get Ecstasy (MDMA)

Grade Level	N of Valid	N of Miss	Cannot Get	Very Difficult	Fairly Difficult	Fairly Easy	Very Easy
4th	1495	77	58.3	24.5	9.1	5.2	2.9
5th	1465	94	53.1	26.8	10.3	6.4	3.4
6th	1644	102	47.3	28.2	13.6	7.4	3.4
7th	1169	77	37.8	26.9	17.7	11.7	5.8
8th	1152	109	34.3	25.9	22.7	11.4	5.7
9th	853	64	27.2	22.4	24.3	16.6	9.5
10th	858	68	24.1	19.8	23.3	21.4	11.3
11th	688	64	21.5	18.2	24.6	21.7	14.1
12th	627	49	15.8	18.2	23.6	23.3	19.1
Total	9951	704	39.7	24.5	17.1	11.9	6.8

Table 3.74: How Easy Is It For Students In Your Child's Grade To Get OxyContin

Grade Level	N of Valid	N of Miss	Cannot Get	Very Difficult	Fairly Difficult	Fairly Easy	Very Easy
4th	1491	81	58.3	23.9	9.4	5.7	2.7
5th	1463	96	53.5	25.8	11.0	6.0	3.7
6th	1638	108	46.8	27.5	14.7	7.6	3.3
7th	1174	72	37.5	28.3	18.4	10.1	5.7
8th	1149	112	35.1	25.5	22.0	12.3	5.1
9th	848	69	29.1	22.8	22.6	15.8	9.7
10th	855	71	24.9	20.6	24.1	19.9	10.5
11th	682	70	22.6	18.8	23.0	22.9	12.8
12th	626	50	19.2	19.3	22.5	23.0	16.0
Total	9926	729	40.2	24.5	17.2	11.7	6.4

Table 3.75: How Easy Is It For Students In Your Child's Grade To Get Crystal Meth (Ice, Crank, Etc.)

Grade Level	N of Valid	N of Miss	Cannot Get	Very Difficult	Fairly Difficult	Fairly Easy	Very Easy
4th	1496	76	58.2	23.9	8.9	5.9	3.1
5th	1466	93	52.9	25.8	11.1	6.1	4.1
6th	1639	107	46.7	27.2	14.4	7.6	4.1
7th	1179	67	37.0	26.8	16.8	12.6	6.9
8th	1160	101	34.9	26.0	20.8	12.2	6.0
9th	852	65	28.1	22.1	22.4	16.7	10.8
10th	855	71	25.1	20.1	22.1	21.5	11.1
11th	691	61	23.3	18.5	22.4	20.7	15.1
12th	629	47	18.1	17.8	21.9	23.1	19.1
Total	9967	688	40.0	24.1	16.5	12.1	7.4

Table 3.76: How Easy Is It For Students In Your Child's Grade To Get A Gun

Grade Level	N of Valid	N of Miss	Cannot Get	Very Difficult	Fairly Difficult	Fairly Easy	Very Easy
4th	1488	84	47.6	20.7	13.3	11.8	6.6
5th	1463	96	43.7	20.7	13.8	13.4	8.4
6th	1639	107	36.9	20.2	16.5	16.6	9.9
7th	1172	74	29.3	20.8	17.5	18.6	13.8
8th	1160	101	28.2	18.4	18.8	21.3	13.3
9th	862	55	24.0	17.2	20.6	20.0	18.2
10th	859	67	22.5	15.1	19.2	24.8	18.4
11th	682	70	20.1	15.2	20.4	23.9	20.4
12th	629	47	15.7	14.3	19.1	23.4	27.5
Total	9954	701	32.7	18.8	17.0	18.1	13.3

### 3.8 Safety at School

Table 3.77: While At School My Child Feels Safe In The Classroom

Grade Level	N of Valid	N of Miss	Never	Seldom	Sometimes	Often	A Lot
4th	1525	47	1.0	1.6	7.6	20.7	69.0
5th	1509	50	1.3	1.2	9.1	22.5	65.9
6th	1700	46	1.8	1.4	7.8	24.0	65.0
7th	1216	30	2.5	2.6	10.9	28.4	55.5
8th	1217	44	1.9	1.2	9.0	27.4	60.5
9th	885	32	4.1	2.1	10.7	29.2	53.9
10th	908	18	3.6	2.3	10.4	26.5	57.2
11th	726	26	4.0	1.7	7.9	29.5	57.0
12th	657	19	4.4	3.2	6.7	26.0	59.7
Total	10343	312	2.4	1.8	8.9	25.4	61.5

Table 3.78: While At School My Child Feels Safe In The Cafeteria

Grade Level	N of Valid	N of Miss	Never	Seldom	Sometimes	Often	A Lot
4th	1517	55	1.5	1.6	9.8	24.6	62.5
5th	1509	50	1.5	1.3	10.3	25.9	60.9
6th	1699	47	2.4	1.9	10.7	29.4	55.6
7th	1211	35	3.9	2.7	14.4	29.7	49.3
8th	1218	43	2.1	1.8	11.5	30.5	54.2
9th	884	33	4.3	3.7	14.0	30.4	47.5
10th	905	21	4.5	2.8	11.7	31.5	49.5
11th	722	30	3.7	3.0	11.1	32.4	49.7
12th	654	22	4.4	3.8	8.9	28.1	54.7
Total	10319	336	2.8	2.3	11.3	28.8	54.8

Table 3.79: While At School My Child Feels Safe In The Halls

Grade Level	N of Valid	N of Miss	Never	Seldom	Sometimes	Often	A Lot
4th	1518	54	1.9	2.2	13.0	24.6	58.3
5th	1507	52	2.7	2.5	11.5	26.9	56.5
6th	1694	52	3.5	3.4	14.3	29.6	49.1
7th	1208	38	4.8	5.3	17.7	31.8	40.4
8th	1217	44	2.7	3.2	14.1	31.6	48.4
9th	880	37	5.1	5.2	16.4	30.9	42.4
10th	905	21	4.4	4.1	14.4	31.7	45.4
11th	727	25	4.3	2.9	15.0	32.3	45.5
12th	652	24	5.2	4.1	11.8	28.7	50.2
Total	10308	347	3.6	3.5	14.2	29.4	49.4

Table 3.80: While At School My Child Feels Safe In the Bathroom

Grade Level	N of Valid	N of Miss	Never	Seldom	Sometimes	Often	A Lot
4th	1518	54	2.9	3.4	15.0	25.2	53.6
5th	1502	57	3.5	2.7	14.9	25.7	53.3
6th	1694	52	4.5	4.4	15.5	29.5	46.0
7th	1209	37	6.6	6.0	16.7	30.9	39.8
8th	1217	44	3.5	5.3	15.9	30.9	44.5
9th	884	33	7.2	6.2	17.9	30.0	38.7
10th	900	26	6.2	4.9	16.1	30.4	42.3
11th	720	32	5.6	7.1	13.1	32.1	42.2
12th	650	26	6.2	4.8	13.4	29.4	46.3
Total	10294	361	4.8	4.7	15.5	28.9	46.1

Table 3.81: While At School My Child Feels Safe In The Gym

Grade Level	N of Valid	N of Miss	Never	Seldom	Sometimes	Often	A Lot
4th	1494	78	2.1	2.1	11.8	25.0	59.0
5th	1485	74	2.8	2.4	11.9	24.6	58.3
6th	1686	60	3.2	2.8	12.3	28.9	52.7
7th	1202	44	4.3	3.7	14.7	31.1	46.1
8th	1215	46	2.7	2.5	11.9	30.2	52.7
9th	878	39	4.8	5.0	13.3	31.4	45.4
10th	894	32	4.8	2.8	13.2	32.0	47.2
11th	719	33	4.2	3.6	11.8	32.0	48.4
12th	649	27	5.2	3.4	9.6	28.2	53.6
Total	10222	433	3.5	3.0	12.4	28.8	52.3

Table 3.82: While At School My Child Feels Safe On The School Bus

Grade Level	N of Valid	N of Miss	Never	Seldom	Sometimes	Often	A Lot
4th	1413	159	6.3	4.2	19.4	22.6	47.4
5th	1417	142	7.4	4.0	17.0	25.6	46.0
6th	1582	164	6.4	6.3	18.0	28.2	41.2
7th	1130	116	8.7	6.6	19.2	27.0	38.5
8th	1144	117	6.2	5.2	18.6	28.3	41.6
9th	832	85	9.5	6.4	17.7	25.5	41.0
10th	831	95	7.2	5.2	17.3	28.8	41.5
11th	671	81	6.0	5.5	12.8	30.6	45.2
12th	593	83	8.3	4.2	12.6	26.5	48.4
Total	9613	1042	7.2	5.3	17.5	26.7	43.3

Table 3.83: While At School My Child Feels Safe At School Events

Grade Level	N of Valid	N of Miss	Never	Seldom	Sometimes	Often	A Lot
4th	1483	89	2.6	2.6	14.1	26.2	54.6
5th	1486	73	3.7	2.7	14.3	25.9	53.4
6th	1677	69	3.7	3.3	14.4	30.9	47.6
7th	1205	41	5.2	4.3	17.3	31.3	41.8
8th	1208	53	3.1	3.2	12.7	32.9	48.0
9th	879	38	5.7	6.4	16.0	29.0	42.9
10th	899	27	4.9	4.1	14.6	33.9	42.5
11th	716	36	4.3	4.1	11.9	34.5	45.3
12th	650	26	6.2	3.8	11.4	28.0	50.6
Total	10203	452	4.1	3.6	14.3	29.9	48.0

Table 3.84: While At School My Child Feels Safe On The Playground

Grade Level	N of Valid	N of Miss	Never	Seldom	Sometimes	Often	A Lot
4th	1512	60	2.4	3.8	16.6	24.9	52.4
5th	1497	62	3.5	3.2	16.8	25.9	50.6
6th	1668	78	4.4	3.5	14.9	29.4	47.8
7th	1189	57	5.9	4.0	17.3	31.0	41.9
8th	1188	73	3.7	3.2	13.2	30.9	49.0
9th	856	61	7.7	5.5	15.7	28.3	42.9
10th	851	75	5.6	3.1	13.6	32.3	45.4
11th	686	66	5.1	3.2	12.0	33.5	46.2
12th	603	73	6.6	4.0	9.0	28.2	52.2
Total	10050	605	4.6	3.7	14.9	28.9	47.9



Table 3.85: While At School My Child Feels Safe In The Parking Lot

Grade Level	N of Valid	N of Miss	Never	Seldom	Sometimes	Often	A Lot
4th	1503	69	5.1	3.9	14.6	25.9	50.6
5th	1494	65	6.1	2.9	16.7	26.0	48.3
6th	1676	70	5.9	4.5	15.5	29.3	44.8
7th	1195	51	7.0	5.4	17.7	31.0	38.9
8th	1212	49	4.5	4.0	15.3	31.2	45.0
9th	877	40	7.0	6.4	17.4	28.6	40.6
10th	892	34	6.7	3.4	17.3	30.0	42.6
11th	711	41	5.6	4.4	13.9	33.9	42.2
12th	652	24	6.6	4.0	13.8	28.1	47.5
Total	10212	443	6.0	4.2	15.9	29.0	44.9

### 3.9 Effectiveness of Solutions

Table 3.86: School-based Education About The Harmful Effects Of Drug And Alcohol Use

Grade Level	N of Valid	N of Miss	Strongly Agree	Agree	Undecided	Disagree	Strongly Disagree
4th	1505	67	61.3	28.3	5.9	1.8	2.7
5th	1484	75	62.6	28.9	4.6	1.6	2.2
6th	1678	68	62.1	29.3	5.5	1.3	1.7
7th	1193	53	55.3	33.1	6.6	2.3	2.6
8th	1200	61	54.9	31.7	7.3	2.8	3.3
9th	880	37	51.0	33.0	10.3	2.8	2.8
10th	906	20	45.9	33.6	12.7	4.0	3.9
11th	721	31	44.4	35.6	12.8	4.4	2.8
12th	653	23	48.2	34.6	9.6	4.4	3.1
Total	10220	435	55.9	31.3	7.6	2.5	2.7

Table 3.87: TV Ads On Preventing Drug Use By Youth

Grade Level	N of Valid	N of Miss	Strongly Agree	Agree	Undecided	Disagree	Strongly Disagree
4th	1304	268	49.5	35.9	8.5	3.5	2.6
5th	1291	268	51.7	33.4	8.6	3.3	3.0
6th	1403	343	48.9	35.2	10.6	3.3	1.9
7th	934	312	42.7	36.8	12.6	5.4	2.5
8th	1022	239	43.7	35.5	12.2	5.6	2.9
9th	719	198	40.8	35.2	13.6	6.5	3.9
10th	788	138	36.9	39.0	14.0	7.2	2.9
11th	558	194	33.7	37.1	17.7	8.8	2.7
12th	566	110	38.7	37.1	14.8	6.4	3.0
Total	8585	2070	44.7	35.8	11.7	5.0	2.7

Table 3.88: TV Ads On Preventing Alcohol Use By Youth

Grade Level	N of Valid	N of Miss	Strongly Agree	Agree	Undecided	Disagree	Strongly Disagree
4th	1501	71	49.4	34.2	9.9	3.7	2.8
5th	1478	81	51.4	32.0	9.3	4.0	3.3
6th	1672	74	48.9	33.7	11.4	4.1	1.8
7th	1180	66	43.1	35.4	13.1	5.6	2.8
8th	1196	65	43.1	34.5	12.5	6.8	3.1
9th	876	41	40.0	33.9	14.6	7.5	4.0
10th	898	28	36.4	37.5	14.0	9.1	2.9
11th	711	41	35.7	33.9	19.0	8.9	2.5
12th	647	29	38.8	34.6	15.6	7.0	4.0
Total	10159	496	44.5	34.3	12.5	5.8	2.9

Table 3.89: Religious Institutions Providing Drug Education To Young People

Grade Level	N of Valid	N of Miss	Strongly Agree	Agree	Undecided	Disagree	Strongly Disagree
4th	1506	66	56.8	30.0	8.0	2.6	2.5
5th	1484	75	54.2	31.1	9.0	2.6	3.0
6th	1682	64	52.8	31.6	10.6	3.1	1.8
7th	1186	60	47.5	33.3	12.9	3.2	3.1
8th	1195	66	45.4	34.5	13.6	3.3	3.3
9th	883	34	42.8	32.8	15.6	4.8	4.0
10th	896	30	40.2	36.0	16.6	4.1	3.0
11th	714	38	37.4	37.3	17.2	5.0	3.1
12th	651	25	41.3	36.4	14.7	4.8	2.8
Total	10197	458	48.3	33.0	12.3	3.5	2.9

Table 3.90: Parents Providing Drug Education To Their Children

Grade Level	N of Valid	N of Miss	Strongly Agree	Agree	Undecided	Disagree	Strongly Disagree
4th	1507	65	71.9	20.9	3.3	1.7	2.2
5th	1489	70	70.2	21.7	4.4	0.9	2.8
6th	1678	68	72.0	20.7	4.1	1.1	2.1
7th	1183	63	66.7	24.2	4.1	1.6	3.4
8th	1202	59	68.1	22.6	4.6	1.5	3.2
9th	884	33	61.1	27.5	6.1	1.8	3.5
10th	896	30	58.1	31.5	6.6	1.3	2.5
11th	716	36	59.6	27.0	7.5	2.8	3.1
12th	653	23	61.6	24.8	7.8	2.9	2.9
Total	10208	447	67.0	23.7	5.0	1.6	2.8

Table 3.91: Parents Taking Responsibility For Their Children's Use Of Drugs And Alcohol

Grade Level	N of Valid	N of Miss	Strongly Agree	Agree	Undecided	Disagree	Strongly Disagree
4th	1510	62	66.4	20.1	5.8	4.0	3.6
5th	1489	70	66.4	19.8	7.6	2.6	3.6
6th	1676	70	69.3	18.5	6.6	2.9	2.7
7th	1183	63	64.3	21.2	7.4	3.9	3.2
8th	1200	61	67.6	17.6	6.9	3.4	4.5
9th	883	34	59.5	22.7	9.3	3.5	5.1
10th	893	33	62.8	21.3	8.4	3.5	4.0
11th	717	35	57.2	24.1	10.2	4.9	3.6
12th	652	24	61.3	20.6	8.6	5.4	4.1
Total	10203	452	64.9	20.3	7.5	3.6	3.7

Table 3.92: News Media Keeping Parents/Public Informed About Student Drug Use And Violence

Grade Level	N of Valid	N of Miss	Strongly Agree	Agree	Undecided	Disagree	Strongly Disagree
4th	1510	62	54.3	30.1	10.0	2.8	2.8
5th	1492	67	55.6	30.8	9.2	2.1	2.3
6th	1674	72	54.2	31.2	10.0	2.7	1.9
7th	1184	62	48.4	34.1	10.7	4.6	2.2
8th	1203	58	50.1	31.8	10.6	4.2	3.2
9th	882	35	44.3	35.5	11.7	4.8	3.7
10th	896	30	43.9	35.8	13.6	3.5	3.2
11th	713	39	42.5	35.3	13.9	5.3	2.9
12th	651	25	42.4	35.2	14.3	6.0	2.2
Total	10205	450	49.9	32.7	11.1	3.7	2.6

Table 3.93: Schools Keeping Parents/Public Informed About Student Drug Use And Violence

Grade Level	N of Valid	N of Miss	Strongly Agree	Agree	Undecided	Disagree	Strongly Disagree
4th	1507	65	64.0	25.2	6.2	2.1	2.5
5th	1484	75	63.1	26.3	6.4	1.8	2.4
6th	1679	67	63.3	25.5	6.0	3.1	2.1
7th	1184	62	59.1	27.6	6.3	4.6	2.3
8th	1204	57	59.4	26.3	6.3	4.1	3.9
9th	881	36	52.6	31.6	7.9	4.3	3.6
10th	898	28	53.2	29.5	9.4	4.7	3.2
11th	715	37	49.2	33.4	9.9	3.9	3.5
12th	650	26	51.4	30.6	8.3	6.6	3.1
Total	10202	453	58.9	27.7	7.0	3.6	2.8

Table 3.94: Community Anti-drug Coalition For Keeping Students Drug Free

Grade Level	N of Valid	N of Miss	Strongly Agree	Agree	Undecided	Disagree	Strongly Disagree
4th	1496	76	57.6	28.4	9.6	1.9	2.4
5th	1479	80	56.8	30.3	8.9	2.1	1.9
6th	1657	89	54.7	29.6	11.5	2.4	1.8
7th	1179	67	50.8	32.6	11.8	2.7	2.1
8th	1183	78	49.9	30.4	12.3	4.1	3.4
9th	875	42	46.6	32.9	12.3	4.2	3.9
10th	895	31	42.8	33.3	16.5	4.6	2.8
11th	711	41	43.0	31.8	17.2	5.1	3.0
12th	647	29	41.9	34.5	16.7	4.5	2.5
Total	10122	533	51.0	31.1	12.2	3.2	2.5

Table 3.95: After School Activities For Students At School

Grade Level	N of Valid	N of Miss	Strongly Agree	Agree	Undecided	Disagree	Strongly Disagree
4th	1502	70	55.3	30.8	9.2	2.3	2.5
5th	1474	85	56.2	30.8	9.0	1.7	2.3
6th	1669	77	55.8	30.6	10.2	1.9	1.5
7th	1170	76	51.6	32.2	10.9	3.2	2.1
8th	1189	72	50.9	33.1	10.5	2.6	2.9
9th	870	47	51.5	31.8	10.1	2.9	3.7
10th	895	31	48.7	33.3	11.8	3.7	2.5
11th	713	39	50.4	30.9	13.2	2.9	2.7
12th	644	32	49.2	32.8	12.3	3.4	2.3
Total	10126	529	52.9	31.6	10.5	2.6	2.4

Table 3.96: After School Activities For Students In The Community (Not At School)

Grade Level	N of Valid	N of Miss	Strongly Agree	Agree	Undecided	Disagree	Strongly Disagree
4th	1504	68	49.3	31.8	12.2	3.3	3.5
5th	1480	79	50.1	31.8	11.8	3.0	3.2
6th	1668	78	48.5	32.0	13.5	3.3	2.6
7th	1179	67	45.4	31.8	14.8	4.4	3.6
8th	1194	67	43.6	35.0	13.8	4.2	3.4
9th	880	37	43.0	32.8	15.6	4.9	3.8
10th	898	28	41.5	34.3	17.3	4.0	2.9
11th	717	35	42.8	34.2	14.5	5.4	3.1
12th	647	29	44.0	34.6	13.4	5.3	2.6
Total	10167	488	46.1	32.9	13.8	4.0	3.2

Table 3.97: Treatment For Students Who Are Drug And/Or Alcohol Dependent

Grade Level	N of Valid	N of Miss	Strongly Agree	Agree	Undecided	Disagree	Strongly Disagree
4th	1499	73	58.5	27.0	9.5	2.4	2.6
5th	1481	78	57.3	28.4	10.1	2.1	2.2
6th	1665	81	56.5	26.2	13.4	2.0	1.9
7th	1176	70	53.0	27.7	13.4	3.2	2.6
8th	1189	72	51.6	29.4	12.2	3.6	3.3
9th	877	40	51.4	30.1	11.6	3.4	3.4
10th	895	31	46.7	32.7	14.9	2.7	3.0
11th	714	38	45.4	30.0	18.1	4.1	2.5
12th	647	29	49.8	30.6	13.3	3.4	2.9
Total	10143	512	53.4	28.7	12.5	2.8	2.6

Table 3.98: School Policy On Student Use Of Drugs And Alcohol At School

Grade Level	N of Valid	N of Miss	Strongly Agree	Agree	Undecided	Disagree	Strongly Disagree
4th	1500	72	61.0	27.0	7.1	2.4	2.5
5th	1479	80	61.6	26.6	7.0	1.7	3.0
6th	1659	87	62.4	26.6	6.6	2.2	2.0
7th	1166	80	59.0	28.6	7.0	3.2	2.1
8th	1188	73	57.2	29.0	7.8	2.8	3.1
9th	868	49	53.9	31.2	8.2	2.4	4.3
10th	890	36	51.8	30.3	10.1	4.4	3.4
11th	715	37	50.8	31.5	10.2	4.3	3.2
12th	643	33	51.8	28.5	11.4	4.7	3.7
Total	10108	547	57.9	28.4	7.9	2.9	2.9

Table 3.99: School Policy On Student Violence/Bullying

Grade Level	N of Valid	N of Miss	Strongly Agree	Agree	Undecided	Disagree	Strongly Disagree
4th	1507	65	62.6	25.5	6.7	2.0	3.2
5th	1475	84	60.5	27.8	6.6	2.2	2.9
6th	1673	73	61.9	25.6	7.3	2.9	2.2
7th	1179	67	57.7	28.5	7.9	3.6	2.4
8th	1192	69	58.0	26.8	7.6	4.1	3.4
9th	878	39	52.8	30.1	9.7	3.2	4.2
10th	891	35	50.5	30.9	10.9	4.5	3.3
11th	713	39	49.9	30.3	10.7	5.9	3.2
12th	645	31	50.9	30.2	10.4	5.4	3.1
Total	10153	502	57.5	27.9	8.2	3.4	3.0

Table 3.100: Having A Security (Police) Officer At The School

Grade Level	N of Valid	N of Miss	Strongly Agree	Agree	Undecided	Disagree	Strongly Disagree
4th	1509	63	59.8	23.6	11.4	2.7	2.6
5th	1487	72	59.2	24.5	10.7	2.4	3.1
6th	1671	75	57.6	24.3	13.2	2.5	2.4
7th	1175	71	58.3	25.3	11.5	2.5	2.5
8th	1200	61	51.8	26.3	14.7	3.8	3.5
9th	878	39	52.7	28.5	12.6	2.5	3.6
10th	895	31	45.1	25.5	20.9	4.7	3.8
11th	714	38	46.9	26.8	17.4	5.2	3.8
12th	648	28	47.4	26.9	17.0	5.2	3.5
Total	10177	478	54.6	25.4	13.7	3.2	3.1

Table 3.101: Drug Screening Of Students By The School

Grade Level	N of Valid	N of Miss	Strongly Agree	Agree	Undecided	Disagree	Strongly Disagree
4th	1507	65	51.6	21.1	17.7	4.8	4.7
5th	1487	72	53.3	24.0	14.0	3.6	5.2
6th	1672	74	50.8	21.4	17.9	4.4	5.5
7th	1172	74	49.2	22.7	17.7	5.4	4.9
8th	1196	65	48.4	23.0	15.1	6.9	6.7
9th	885	32	47.0	25.0	16.6	5.4	6.0
10th	889	37	43.0	23.8	20.4	5.4	7.4
11th	709	43	42.7	24.5	19.6	6.6	6.5
12th	644	32	43.8	24.8	17.7	6.7	7.0
Total	10161	494	48.8	23.0	17.2	5.2	5.8