



## **Questionnaire Report for Parents**

### **2006-07 National Summary - Parents**

February 1, 2008

# Contents

- 1 Introduction** **1**
  
- 2 Standard Graphics** **3**
  
- 3 Percentage Tables** **7**
  - 3.1 Parent Demographics . . . . . 8
  - 3.2 Student Demographics . . . . . 10
  - 3.3 Student Information . . . . . 12
  - 3.4 Community Information . . . . . 20
  - 3.5 Impressions About Drug Use . . . . . 25
  - 3.6 During The Past Year Your Child Has Used . . . . . 29
  - 3.7 How Easy Is It For Students In Your Child’s Grade To Get . . . . . 33
  - 3.8 Safety at School . . . . . 40
  - 3.9 Effectiveness of Solutions . . . . . 44

# List of Tables

- 3.1 Relation To Child . . . . . 8
- 3.2 Marital Status . . . . . 8
- 3.3 Ethnic Origin . . . . . 9
- 3.4 Sex Of Child . . . . . 10
- 3.5 Use Of Tobacco - My Child . . . . . 10
- 3.6 Use Of Alcohol - My Child . . . . . 11
- 3.7 Use Of Drugs - My Child . . . . . 11
- 3.8 My Child Makes Good Grades In School . . . . . 12
- 3.9 My Child Gets Into Trouble At School . . . . . 12
- 3.10 My Child Attends Church, Synagogue, Etc. . . . . 13
- 3.11 I Set Clear Rules For My Child . . . . . 13
- 3.12 I Punish My Child When He/She Breaks The Rules . . . . . 13
- 3.13 I Talk To My Child About The Harmful Effects Of Using Tobacco, Alcohol And Drugs . . . . . 14
- 3.14 Teachers Talk To Students About The Harmful Effects Of Using Tobacco, Alcohol And Drugs . . . . . 14
- 3.15 Our School Works With Parents Regarding Drug Abuse Prevention . . . . . 14
- 3.16 Law Enforcement Is Doing A Good Job In Keeping Alcohol Away From Students . . . . . 15
- 3.17 Law Enforcement Is Doing A Good Job In Keeping Drugs Away From Students . . . . . 15
- 3.18 I Am Afraid My Child Will Be Hurt At School . . . . . 15
- 3.19 My Child Takes Part In Gang Activities . . . . . 16
- 3.20 My Child Has Been Threatened With A Gun, Knife Or Club At School . . . . . 16
- 3.21 A Student Has Threatened To Hit, Slap Or Kick My Child . . . . . 16
- 3.22 Our School Sets Clear Rules On Using Drugs At School . . . . . 17
- 3.23 Our School Sets Clear Rules On Bullying Or Threatening Behavior . . . . . 17
- 3.24 I See Ads On TV That Encourage Me To Talk To My Child About Drug Use . . . . . 17
- 3.25 My Child Participates In Community Activities Such as Scouts, Rec. Teams, Youth Clubs, Etc. . . . . 18
- 3.26 My Child Participates In School Activities Such as Band, Clubs, Etc. . . . . 18
- 3.27 The School Has Security (Police) Officer . . . . . 18
- 3.28 A Security (Police) Officer Can Prevent Violence At School . . . . . 19
- 3.29 Every School Needs A Security (Police) Officer . . . . . 19
- 3.30 My Child Has Skipped School Without My Permission . . . . . 19
- 3.31 Drug And Alcohol Use Is A Big Problem Facing Youth In My Community . . . . . 20
- 3.32 Youth Violence Is A Big Problem In My Community . . . . . 20
- 3.33 My Child Has Friends Who Drink Alcohol . . . . . 21
- 3.34 It Would Be Okay With Me For My Child To Use Alcohol If He/She Would Not Use Other Drugs . . . . . 21
- 3.35 Beer Ads Encourage Underage Drinking . . . . . 21

3.36 My Child Has Friends Who Use Tobacco . . . . .	22
3.37 My Child Has Friends Who Use Drugs . . . . .	22
3.38 It Would Be Okay With Me For My Child To Smoke A Little Pot If He/She Would Leave Other Drugs Alone . . . . .	23
3.39 My Child Has Had 5 Or More Glasses Of Beer, Coolers Or Liquor Within A Few Hours . . . . .	23
3.40 The Alcohol Industry Does A Good Job Of Discouraging Underage Drinking. . . . .	24
3.41 Harmfulness Of Use – Cigarettes . . . . .	25
3.42 Harmfulness Of Use – Smokeless Tobacco (Chew, Etc.) . . . . .	25
3.43 Harmfulness Of Use – Cigars . . . . .	26
3.44 Harmfulness Of Use – Beer . . . . .	26
3.45 Harmfulness Of Use – Coolers, Breezers, Hard Lemonades, Etc. . . . .	26
3.46 Harmfulness Of Use – Liquor . . . . .	27
3.47 Harmfulness Of Use – Marijuana . . . . .	27
3.48 Harmfulness Of Use – Cocaine (Crack, Etc) . . . . .	27
3.49 Harmfulness Of Use – Crystal Meth (Ice, Crank, Etc.) . . . . .	28
3.50 Percent Of Use – Cigarettes . . . . .	29
3.51 Percent Of Use – Smokeless Tobacco (Chew, Etc.) . . . . .	29
3.52 Percent Of Use – Cigars . . . . .	30
3.53 Percent Of Use – Beer . . . . .	30
3.54 Percent Of Use – Coolers, Breezers, Hard Lemonades, Etc. . . . .	30
3.55 Percent Of Use – Liquor . . . . .	31
3.56 Percent Of Use – Marijuana . . . . .	31
3.57 Percent Of Use – Cocaine (Crack, Etc) . . . . .	31
3.58 Percent Of Use – Crystal Meth (Ice, Crank, Etc.) . . . . .	32
3.59 How Easy Is It For Students In Your Child’s Grade To Get Cigarettes . . . . .	33
3.60 How Easy Is It For Students In Your Child’s Grade To Get Smokeless Tobacco (Chew, Etc.) . . . . .	33
3.61 How Easy Is It For Students In Your Child’s Grade To Get Cigars . . . . .	34
3.62 How Easy Is It For Students In Your Child’s Grade To Get Beer . . . . .	34
3.63 How Easy Is It For Students In Your Child’s Grade To Get Coolers, Breezers, Hard Lemon- ades, Etc. . . . .	35
3.64 How Easy Is It For Students In Your Child’s Grade To Get Liquor . . . . .	35
3.65 How Easy Is It For Students In Your Child’s Grade To Get Marijuana . . . . .	36
3.66 How Easy Is It For Students In Your Child’s Grade To Get Cocaine (Crack, Etc) . . . . .	36
3.67 How Easy Is It For Students In Your Child’s Grade To Get Uppers (Stimulants) . . . . .	36
3.68 How Easy Is It For Students In Your Child’s Grade To Get Downers (Depressants) . . . . .	37
3.69 How Easy Is It For Students In Your Child’s Grade To Get Inhalants (Glue, Etc) . . . . .	37
3.70 How Easy Is It For Students In Your Child’s Grade To Get Hallucinogens (PCP, LSD, Etc) . . . . .	37
3.71 How Easy Is It For Students In Your Child’s Grade To Get Heroin (Opiates) . . . . .	38
3.72 How Easy Is It For Students In Your Child’s Grade To Get Anabolic Steroids . . . . .	38
3.73 How Easy Is It For Students In Your Child’s Grade To Get Ecstasy (MDMA) . . . . .	38
3.74 How Easy Is It For Students In Your Child’s Grade To Get OxyContin . . . . .	39
3.75 How Easy Is It For Students In Your Child’s Grade To Get Crystal Meth (Ice, Crank, Etc.) . . . . .	39
3.76 How Easy Is It For Students In Your Child’s Grade To Get A Gun . . . . .	39
3.77 While At School My Child Feels Safe In The Classroom . . . . .	40
3.78 While At School My Child Feels Safe In The Cafeteria . . . . .	40

3.79 While At School My Child Feels Safe In The Halls . . . . .	41
3.80 While At School My Child Feels Safe In the Bathroom . . . . .	41
3.81 While At School My Child Feels Safe In The Gym . . . . .	41
3.82 While At School My Child Feels Safe On The School Bus . . . . .	42
3.83 While At School My Child Feels Safe At School Events . . . . .	42
3.84 While At School My Child Feels Safe On The Playground . . . . .	42
3.85 While At School My Child Feels Safe In The Parking Lot . . . . .	43
3.86 School-based Education About The Harmful Effects Of Drug And Alcohol Use . . . . .	44
3.87 TV Ads On Preventing Drug Use By Youth . . . . .	44
3.88 TV Ads On Preventing Alcohol Use By Youth . . . . .	45
3.89 Religious Institutions Providing Drug Education To Young People . . . . .	45
3.90 Parents Providing Drug Education To Their Children . . . . .	45
3.91 Parents Taking Responsibility For Their Children's Use Of Drugs And Alcohol . . . . .	46
3.92 News Media Keeping Parents/Public Informed About Student Drug Use And Violence . . . . .	46
3.93 Schools Keeping Parents/Public Informed About Student Drug Use And Violence . . . . .	46
3.94 Community Anti-drug Coalition For Keeping Students Drug Free . . . . .	47
3.95 After School Activities For Students At School . . . . .	47
3.96 After School Activities For Students In The Community (Not At School) . . . . .	47
3.97 Treatment For Students Who Are Drug And/Or Alcohol Dependent . . . . .	48
3.98 School Policy On Student Use Of Drugs And Alcohol At School . . . . .	48
3.99 School Policy On Student Violence/Bullying . . . . .	48
3.100 Having A Security (Police) Officer At The School . . . . .	49
3.101 Drug Screening Of Students By The School . . . . .	49

# List of Figures

2.1	During the Past Year My Child Has Used Tobacco . . . . .	4
2.2	During the Past Year My Child Has Used Alcohol . . . . .	5
2.3	During the Past Year My Child Has Used Illicit Drugs . . . . .	6

# Chapter 1

## Introduction

The following graphs and tables are compiled from data collected from parents in your school(s) using the *Pride Questionnaire for Parents*. These data reflect information, impressions and knowledge parents have regarding drug and alcohol use and violence amongst your students. It is important that this report be utilized as part of your drug abuse and violence awareness and prevention programs. We strongly suggest that you:

**COPY THE FOLLOWING PAGES,** (which highlight and graphically summarize drug use and violent behavior by students in your school)

**DISTRIBUTE THEM TO YOUR FACULTY**

**AND SHARE THIS INFORMATION WITH PARENTS.**

Most of all, we strongly encourage a parent meeting at your school to share this information!

**NOTE:** Most drug use occurs at nights and weekends when school is not in session.

**FOR GREATEST SUCCESS IN DECREASING DRUG USE, FACULTY, STUDENTS AND PARENTS MUST WORK TOGETHER TOWARD A DRUG-FREE LIFESTYLE.**

If you have questions about this report, or if you wish to have information on other **Pride Surveys** services and products, please call the **Pride Surveys** Office or write to the following address:

**Pride Surveys**

Janie Pitcock

160 Vanderbilt Court

Bowling Green, KY 42103

1-800-279-6361

1-270-746-9596

[www.pridesurveys.com](http://www.pridesurveys.com)

The following information is for **Pride Surveys** internal use only.

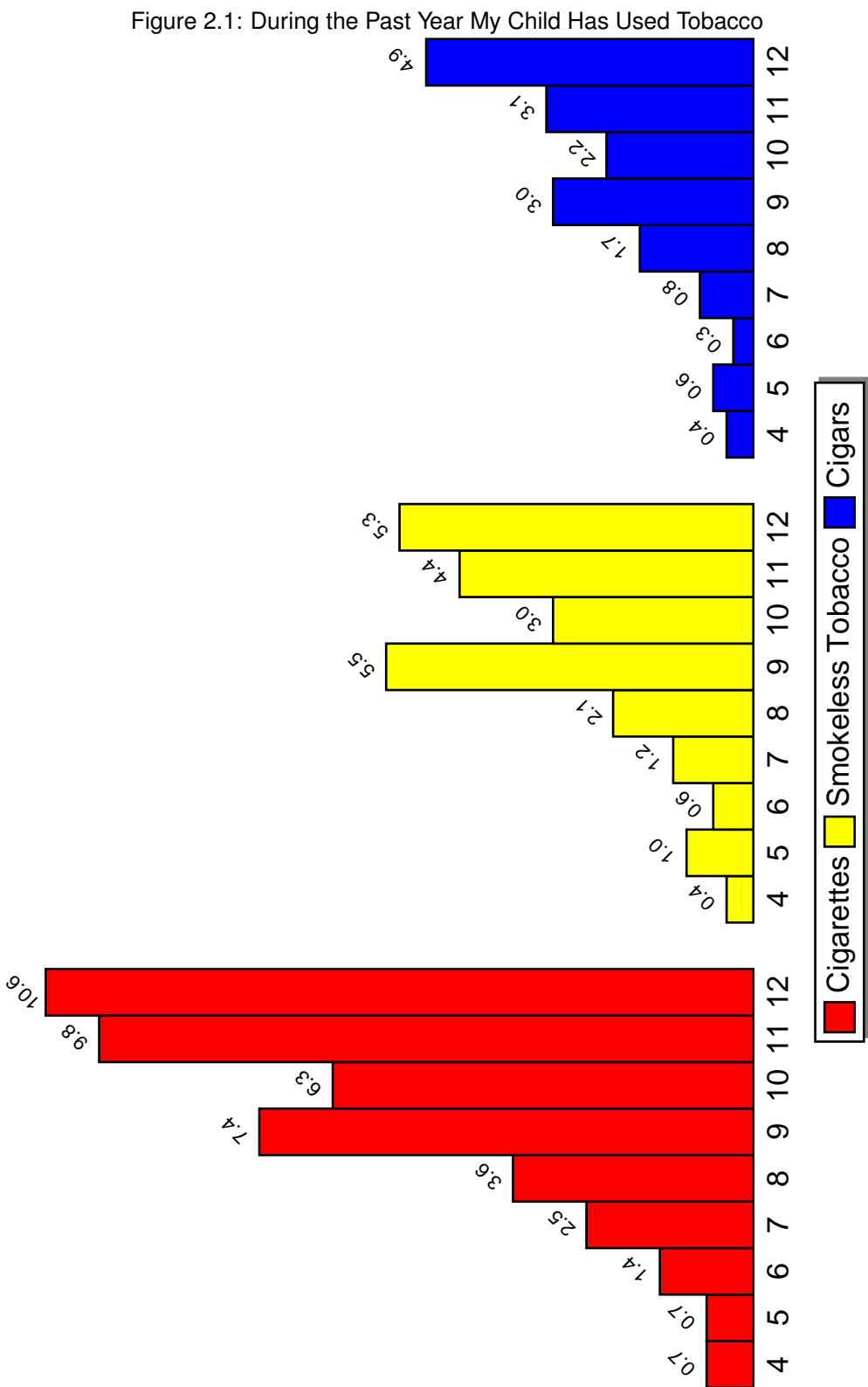
- Data Files: up069999
- Filter:



## **Chapter 2**

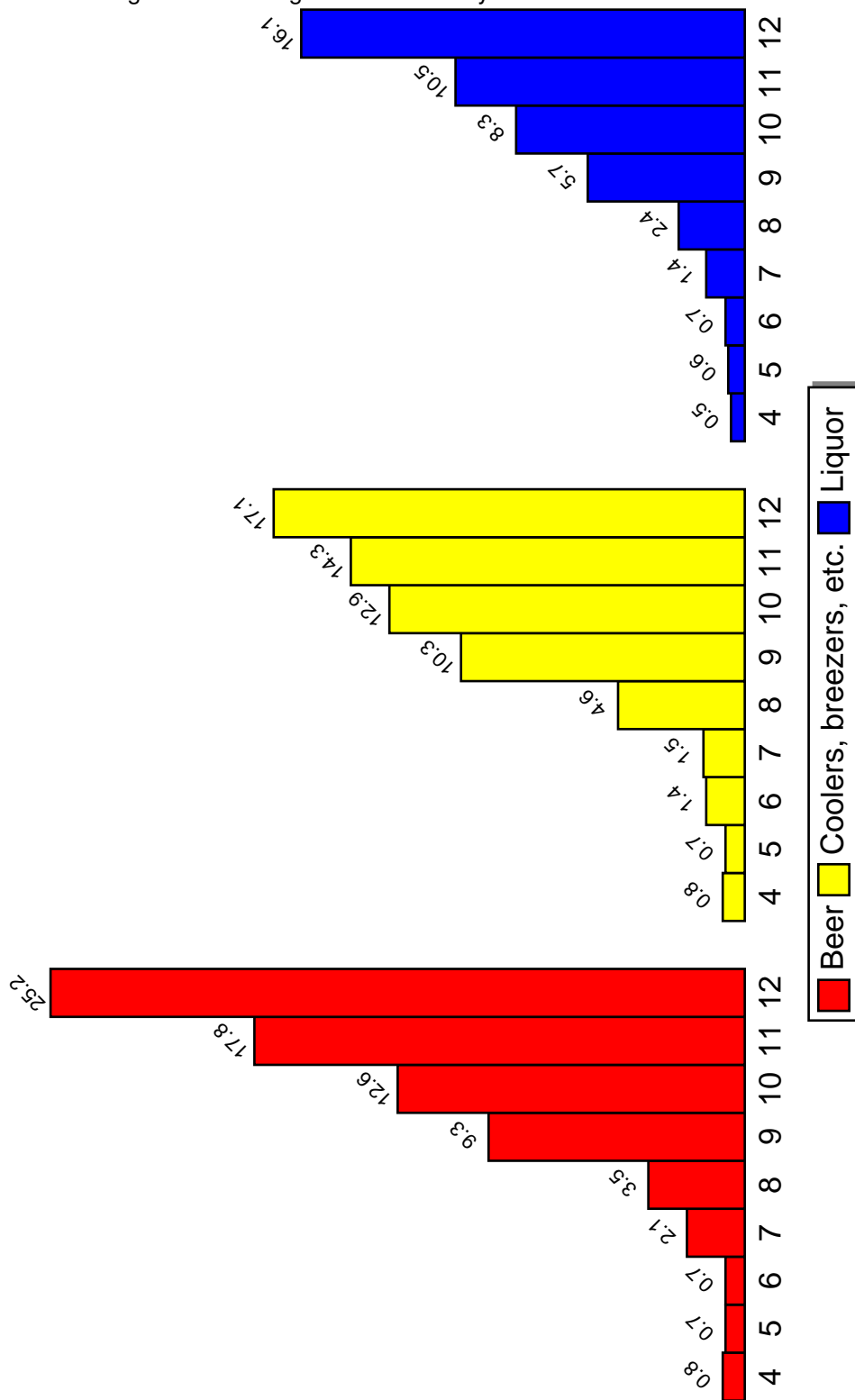
# **Standard Graphics**

# During the Past Year My Child Has Used Tobacco



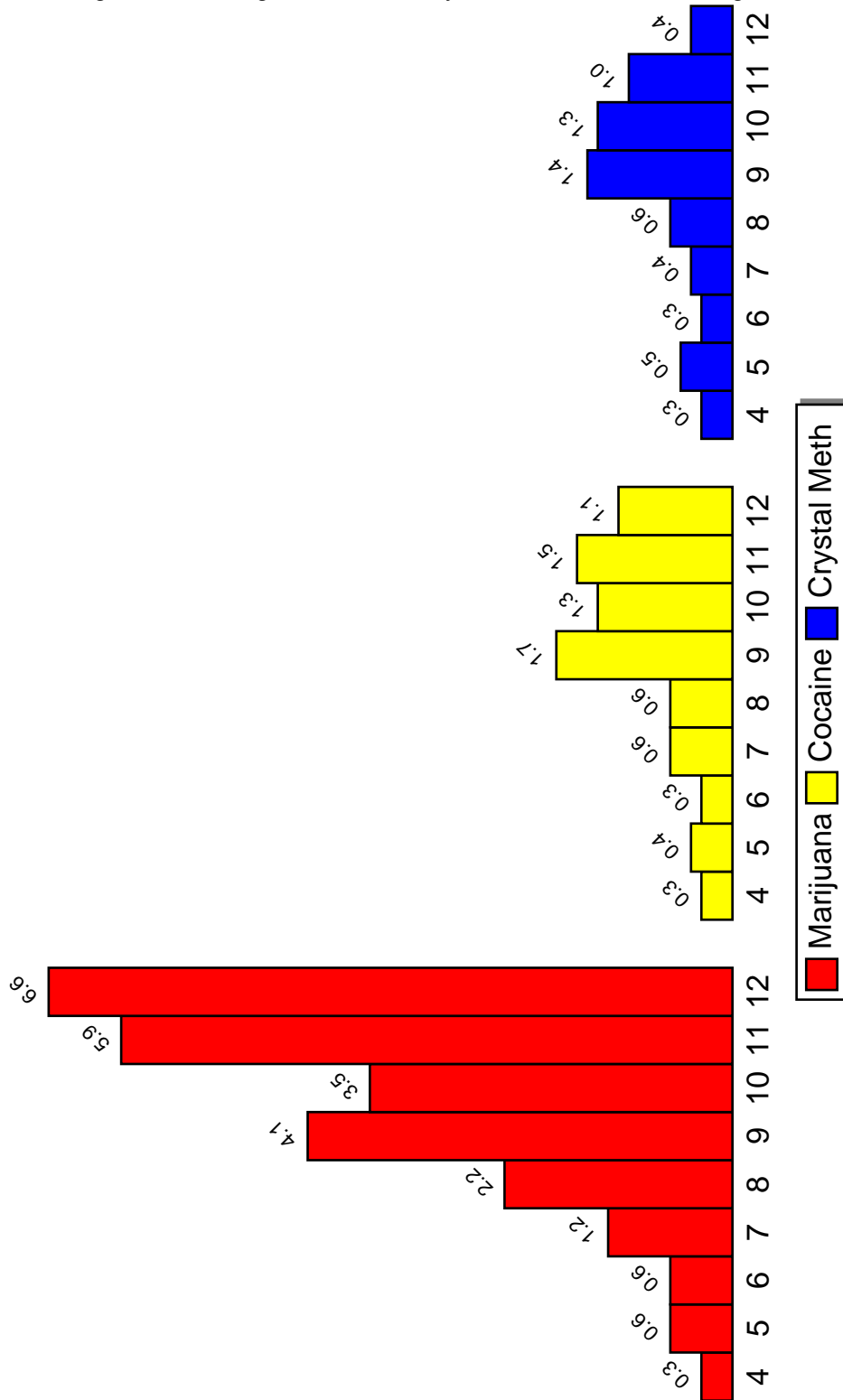
# During the Past Year My Child Has Used Alcohol

Figure 2.2: During the Past Year My Child Has Used Alcohol



# During the Past Year My Child Has Used Illicit Drugs

Figure 2.3: During the Past Year My Child Has Used Illicit Drugs



## Chapter 3

# Percentage Tables

This chapter contains your parent survey results in tabular form. Each table corresponds to an item on the questionnaire. The *N of Valid* column contains the number of parents responding to the item and the *N of Missing* column contains the number of parents not responding to the item. The remaining columns contain the percentages of parents responding to the particular response categories.

The percentage tables of the report appear in the same order as corresponding questions on the questionnaire. The Table of Contents contains the percentage tables by section and gives the page number where each section is located. The List of Tables contains the location of each individual table.

### 3.1 Parent Demographics

Table 3.1: Relation To Child

Grade Level	N of Valid	N of Miss	Mother/ Stepmother	Father/ Stepfather	Grandmother	Grandfather	Guardian	Other
4th	1158	19	81.7	10.0	3.8	0.5	2.5	1.5
5th	1266	15	81.1	10.8	4.7	0.5	1.7	1.1
6th	1903	24	79.7	13.0	4.2	0.1	2.4	0.6
7th	1398	31	77.4	14.7	3.6	0.6	2.4	1.3
8th	1260	16	78.6	13.7	3.6	0.4	2.4	1.4
9th	773	9	76.2	16.0	2.8	0.1	2.8	1.9
10th	468	5	78.6	14.3	3.4	0.4	2.4	0.9
11th	681	8	75.6	18.1	3.1	0.1	2.1	1.0
12th	464	3	74.6	18.8	1.9	0.2	1.3	3.2
Total	9371	130	78.7	13.6	3.7	0.4	2.3	1.3

Table 3.2: Marital Status

Grade Level	N of Valid	N of Miss	Married	Separated	Divorced	Remarried	Single	Widowed
4th	1155	22	58.3	3.2	10.1	0.9	26.4	1.1
5th	1259	22	59.3	6.0	10.8	2.0	20.2	1.7
6th	1905	22	67.6	4.3	10.2	2.4	13.1	2.4
7th	1405	24	68.3	3.8	11.8	3.1	10.9	2.2
8th	1255	21	69.7	2.9	11.1	2.9	11.6	1.9
9th	771	11	69.8	3.9	10.6	2.2	10.5	3.0
10th	466	7	68.7	3.0	13.3	3.9	10.1	1.1
11th	682	7	77.7	2.8	7.0	3.7	6.2	2.6
12th	462	5	75.1	3.2	8.2	4.8	6.7	1.9
Total	9360	141	67.0	3.9	10.5	2.6	14.0	2.0

Table 3.3: Ethnic Origin

Grade Level	N of Valid	N of Miss	White	African American	Hispanic	Asian/Pacific Isle	Native American	Mixed Origin	Other
4th	1146	31	42.2	51.6	1.0	1.0	2.8	0.9	0.6
5th	1257	24	48.1	46.8	1.1	0.6	1.7	0.9	0.8
6th	1889	38	68.5	27.5	1.9	0.6	0.7	0.2	0.7
7th	1408	21	67.5	27.3	1.5	1.3	1.1	0.6	0.7
8th	1254	22	63.2	31.9	1.5	1.6	0.4	0.6	0.8
9th	767	15	71.1	23.6	1.4	1.0	1.4	0.4	1.0
10th	463	10	68.5	27.4	1.3	1.7	0.0	0.4	0.6
11th	673	16	73.7	21.0	1.6	0.9	1.2	0.9	0.7
12th	460	7	74.8	22.0	0.9	1.3	1.1	0.0	0.0
Total	9317	184	62.5	32.6	1.4	1.0	1.2	0.5	0.7

## 3.2 Student Demographics

Table 3.4: Sex Of Child

Grade Level	N of Valid	N of Miss	Male	Female
4th	1163	14	43.8	56.2
5th	1268	10	44.5	55.5
6th	1917	10	45.9	54.1
7th	1421	8	44.1	55.9
8th	1270	6	41.8	58.2
9th	775	7	48.0	52.0
10th	471	2	43.1	56.9
11th	687	2	44.5	55.5
12th	467	0	45.8	54.2
Total	9439	59	44.5	55.5

Table 3.5: Use Of Tobacco - My Child

Grade Level	N of Valid	N of Miss	Never Used	Has Tried or Is Using
4th	1144	33	98.6	1.4
5th	1257	24	98.2	1.8
6th	1896	31	97.7	2.3
7th	1400	29	96.2	3.8
8th	1256	20	94.6	5.4
9th	760	22	87.9	12.1
10th	461	12	90.2	9.8
11th	678	11	84.7	15.3
12th	458	9	82.3	17.7
Total	9310	191	94.4	5.6



Table 3.6: Use Of Alcohol - My Child

Grade Level	N of Valid	N of Miss	Never Used	Has Tried or Is Using
4th	1141	36	98.7	1.3
5th	1229	49	98.5	1.5
6th	1873	53	98.5	1.5
7th	1388	41	95.0	5.0
8th	1247	29	91.3	8.7
9th	759	23	83.1	16.9
10th	450	23	80.2	19.8
11th	670	19	71.8	28.2
12th	451	16	59.4	40.6
Total	9208	289	91.0	9.0

Table 3.7: Use Of Drugs - My Child

Grade Level	N of Valid	N of Miss	Never Used	Has Tried or Is Using
4th	1126	51	99.6	0.4
5th	1236	44	99.3	0.7
6th	1870	57	99.7	0.3
7th	1388	41	99.0	1.0
8th	1244	32	97.0	3.0
9th	759	23	96.0	4.0
10th	449	24	96.7	3.3
11th	671	18	93.1	6.9
12th	446	21	92.4	7.6
Total	9189	311	97.9	2.1

### 3.3 Student Information

Table 3.8: My Child Makes Good Grades In School

Grade Level	N of Valid	N of Miss	Never	Seldom	Sometimes	Often	A Lot
4th	1161	16	0.2	1.6	17.6	26.0	54.7
5th	1270	11	0.3	1.6	18.7	27.4	52.0
6th	1916	11	0.2	2.0	19.3	27.9	50.7
7th	1421	8	0.3	2.8	17.1	26.7	53.1
8th	1267	9	0.3	2.2	20.3	23.5	53.7
9th	772	10	1.0	2.3	18.8	29.9	47.9
10th	471	2	0.0	2.1	18.5	29.7	49.7
11th	683	6	0.1	1.3	16.7	29.1	52.7
12th	464	3	1.3	2.6	13.8	27.2	55.2
Total	9425	76	0.4	2.0	18.3	27.1	52.2

Table 3.9: My Child Gets Into Trouble At School

Grade Level	N of Valid	N of Miss	Never	Seldom	Sometimes	Often	A Lot
4th	1162	15	43.5	35.2	17.2	2.9	1.2
5th	1265	16	37.8	40.3	18.3	2.5	1.1
6th	1913	14	47.2	34.0	15.2	2.8	0.8
7th	1420	9	51.0	34.1	11.6	1.9	1.4
8th	1270	6	49.8	32.8	13.0	2.6	1.8
9th	769	13	54.7	32.8	9.2	1.7	1.6
10th	472	1	60.0	30.7	7.4	1.7	0.2
11th	684	5	60.5	32.3	6.1	0.4	0.6
12th	465	2	61.9	31.2	4.7	1.3	0.9
Total	9420	81	49.3	34.3	13.0	2.2	1.1

Table 3.10: My Child Attends Church, Synagogue, Etc.

Grade Level	N of Valid	N of Miss	Never	Seldom	Sometimes	Often	A Lot
4th	1158	19	3.5	6.5	23.1	22.6	44.4
5th	1266	15	3.5	7.7	19.7	21.7	47.5
6th	1914	13	2.6	7.3	21.3	21.4	47.4
7th	1418	11	4.4	7.5	20.1	20.2	47.8
8th	1264	12	3.6	7.8	22.3	19.9	46.4
9th	768	14	5.5	11.1	22.3	19.4	41.8
10th	471	2	6.2	12.1	22.7	17.6	41.4
11th	681	8	6.9	10.4	20.3	20.0	42.4
12th	465	2	6.5	11.2	21.5	17.0	43.9
Total	9405	96	4.1	8.3	21.3	20.6	45.7

Table 3.11: I Set Clear Rules For My Child

Grade Level	N of Valid	N of Miss	Never	Seldom	Sometimes	Often	A Lot
4th	1160	17	0.2	0.9	4.0	25.2	69.8
5th	1267	14	0.2	0.5	2.9	23.3	73.2
6th	1909	18	0.3	0.6	4.1	25.9	69.1
7th	1415	14	0.2	0.4	4.7	25.7	69.1
8th	1261	15	0.5	0.8	6.2	25.9	66.6
9th	767	15	0.5	0.8	4.7	30.6	63.4
10th	468	5	0.6	1.5	6.0	32.9	59.0
11th	679	10	0.1	1.0	6.2	28.1	64.5
12th	460	7	1.3	1.5	6.5	29.8	60.9
Total	9386	115	0.3	0.7	4.7	26.5	67.7

Table 3.12: I Punish My Child When He/She Breaks The Rules

Grade Level	N of Valid	N of Miss	Never	Seldom	Sometimes	Often	A Lot
4th	1140	37	1.1	2.5	17.1	37.6	41.7
5th	1256	25	1.0	2.8	16.6	37.8	41.8
6th	1894	33	0.6	2.8	16.4	39.1	41.1
7th	1401	28	1.1	3.6	17.1	35.6	42.6
8th	1249	27	1.3	4.2	17.0	37.2	40.3
9th	761	21	2.0	4.1	16.8	41.5	35.6
10th	463	10	1.5	5.8	19.9	36.5	36.3
11th	670	19	1.8	4.9	20.4	38.5	34.3
12th	452	15	2.4	5.5	18.1	40.0	33.8
Total	9286	215	1.2	3.6	17.3	38.0	39.8

Table 3.13: I Talk To My Child About The Harmful Effects Of Using Tobacco, Alcohol And Drugs

Grade Level	N of Valid	N of Miss	Never	Seldom	Sometimes	Often	A Lot
4th	1167	10	0.9	2.2	13.6	27.8	55.4
5th	1273	8	0.6	1.4	14.3	27.6	56.1
6th	1920	7	1.0	2.0	12.2	29.1	55.7
7th	1421	8	0.8	2.4	12.9	28.5	55.5
8th	1269	7	1.5	3.1	14.6	27.3	53.6
9th	772	10	1.9	2.7	13.3	32.9	49.1
10th	472	1	1.5	3.2	13.1	31.8	50.4
11th	683	6	1.8	3.5	16.1	29.3	49.3
12th	464	3	2.2	3.7	12.5	29.7	51.9
Total	9441	60	1.2	2.5	13.5	28.9	53.9

Table 3.14: Teachers Talk To Students About The Harmful Effects Of Using Tobacco, Alcohol And Drugs

Grade Level	N of Valid	N of Miss	Never	Seldom	Sometimes	Often	A Lot
4th	1125	52	2.3	5.2	30.0	31.8	30.6
5th	1227	54	1.8	6.2	29.6	32.7	29.7
6th	1848	79	2.4	7.7	31.7	33.3	24.8
7th	1377	52	1.2	8.1	34.9	33.9	21.9
8th	1228	48	2.8	5.6	33.9	34.1	23.6
9th	741	41	3.1	11.6	39.1	28.3	17.8
10th	460	13	3.3	11.5	38.5	31.7	15.0
11th	661	28	5.9	11.3	43.7	25.7	13.3
12th	447	20	4.7	11.2	39.8	28.6	15.7
Total	9114	387	2.6	7.9	34.2	32.0	23.2

Table 3.15: Our School Works With Parents Regarding Drug Abuse Prevention

Grade Level	N of Valid	N of Miss	Never	Seldom	Sometimes	Often	A Lot
4th	1105	72	7.3	11.0	30.8	28.2	22.6
5th	1208	73	8.3	13.0	29.2	28.6	20.9
6th	1823	104	8.5	12.7	31.1	29.2	18.5
7th	1347	82	8.4	13.3	31.2	29.2	18.0
8th	1219	57	11.2	13.0	29.5	28.3	18.0
9th	741	41	10.5	18.9	31.2	24.6	14.8
10th	453	20	11.9	18.1	29.8	26.0	14.1
11th	650	39	13.8	18.2	32.5	23.4	12.2
12th	451	16	12.0	17.5	29.3	27.9	13.3
Total	8997	504	9.6	14.1	30.5	27.8	18.0

Table 3.16: Law Enforcement Is Doing A Good Job In Keeping Alcohol Away From Students

Grade Level	N of Valid	N of Miss	Never	Seldom	Sometimes	Often	A Lot
4th	1119	58	4.8	12.4	30.8	27.1	24.8
5th	1230	51	3.9	13.3	33.3	26.1	23.5
6th	1844	83	5.2	13.9	36.0	24.8	20.2
7th	1358	71	5.5	15.8	35.6	25.3	17.7
8th	1215	61	5.2	17.8	33.9	25.6	17.5
9th	747	35	8.8	22.4	35.3	22.0	11.5
10th	459	14	9.8	22.2	34.4	22.4	11.1
11th	663	26	8.6	22.0	35.1	24.1	10.1
12th	454	13	9.5	30.0	30.2	20.9	9.5
Total	9089	412	6.0	16.9	34.2	24.8	18.0

Table 3.17: Law Enforcement Is Doing A Good Job In Keeping Drugs Away From Students

Grade Level	N of Valid	N of Miss	Never	Seldom	Sometimes	Often	A Lot
4th	1109	68	5.1	12.3	32.3	25.8	24.5
5th	1224	57	4.1	13.7	33.0	26.6	22.6
6th	1837	90	5.4	14.0	34.8	26.2	19.6
7th	1349	80	5.6	16.8	34.6	24.8	18.1
8th	1221	55	6.1	18.0	34.2	24.7	17.0
9th	746	36	9.2	21.6	36.9	21.4	10.9
10th	458	15	9.2	22.5	36.7	21.2	10.5
11th	660	29	8.0	22.6	35.0	22.6	11.8
12th	449	18	9.8	29.8	31.8	20.0	8.5
Total	9053	448	6.2	17.2	34.3	24.6	17.7

Table 3.18: I Am Afraid My Child Will Be Hurt At School

Grade Level	N of Valid	N of Miss	Never	Seldom	Sometimes	Often	A Lot
4th	1143	34	35.9	32.0	24.0	4.9	3.2
5th	1261	20	31.3	34.4	25.9	5.2	3.3
6th	1889	38	25.3	35.7	28.9	5.9	4.2
7th	1403	26	28.7	34.8	26.5	6.2	3.8
8th	1255	21	32.3	35.2	22.6	5.7	4.2
9th	767	15	33.4	31.3	26.2	5.0	4.2
10th	464	9	31.3	36.9	23.7	6.3	1.9
11th	682	7	33.6	40.0	19.1	4.1	3.2
12th	460	7	39.1	37.8	17.6	3.3	2.2
Total	9324	177	31.1	35.0	24.9	5.4	3.6

Table 3.19: My Child Takes Part In Gang Activities

Grade Level	N of Valid	N of Miss	Never	Seldom	Sometimes	Often	A Lot
4th	1143	34	96.9	1.0	0.7	0.5	0.9
5th	1259	22	97.2	0.7	0.9	0.3	0.9
6th	1892	35	97.6	0.5	0.6	0.3	0.9
7th	1403	26	96.9	1.0	1.1	0.1	0.9
8th	1253	23	96.0	0.8	0.9	0.9	1.4
9th	753	29	95.2	1.9	1.7	0.8	0.4
10th	463	10	96.3	1.7	0.9	0.9	0.2
11th	677	12	96.5	1.0	1.5	0.3	0.7
12th	459	8	94.6	2.0	2.0	0.7	0.9
Total	9302	199	96.7	1.0	1.0	0.5	0.9

Table 3.20: My Child Has Been Threatened With A Gun, Knife Or Club At School

Grade Level	N of Valid	N of Miss	Never	Seldom	Sometimes	Often	A Lot
4th	1164	13	97.5	1.3	0.5	0.3	0.4
5th	1266	15	97.1	1.3	0.9	0.2	0.4
6th	1913	14	97.2	1.9	0.6	0.1	0.3
7th	1415	14	96.2	1.8	1.3	0.3	0.5
8th	1264	12	94.8	2.4	0.9	0.5	1.4
9th	764	18	92.9	3.4	1.6	0.9	1.2
10th	471	2	93.2	3.8	1.5	1.3	0.2
11th	682	7	94.1	3.1	1.2	0.7	0.9
12th	464	3	93.8	4.1	0.6	1.1	0.4
Total	9403	98	95.8	2.2	0.9	0.4	0.6

Table 3.21: A Student Has Threatened To Hit, Slap Or Kick My Child

Grade Level	N of Valid	N of Miss	Never	Seldom	Sometimes	Often	A Lot
4th	1160	17	54.7	23.6	16.0	3.7	2.0
5th	1261	20	52.6	24.5	16.4	4.4	2.1
6th	1906	21	53.5	23.6	15.7	4.2	3.0
7th	1409	20	57.1	21.4	14.9	4.3	2.3
8th	1261	15	56.9	21.5	14.4	4.1	3.0
9th	760	22	61.1	22.4	11.2	3.2	2.2
10th	472	1	66.3	22.2	8.7	2.3	0.4
11th	677	12	65.0	20.1	10.5	1.9	2.5
12th	462	5	71.6	17.1	7.6	1.9	1.7
Total	9368	133	57.5	22.4	14.0	3.7	2.4

Table 3.22: Our School Sets Clear Rules On Using Drugs At School

Grade Level	N of Valid	N of Miss	Never	Seldom	Sometimes	Often	A Lot
4th	1146	31	2.6	1.7	7.2	25.2	63.3
5th	1248	33	2.5	2.0	7.6	26.8	61.1
6th	1875	52	2.2	2.6	8.3	25.7	61.2
7th	1396	33	1.6	3.1	9.8	27.4	58.2
8th	1249	27	3.0	3.7	9.2	27.5	56.6
9th	757	25	2.6	5.0	15.2	28.4	48.7
10th	467	6	4.5	6.0	14.6	29.8	45.2
11th	671	18	4.0	4.3	12.5	27.4	51.7
12th	454	13	3.3	5.1	16.3	25.3	50.0
Total	9263	238	2.6	3.2	10.0	26.8	57.3

Table 3.23: Our School Sets Clear Rules On Bullying Or Threatening Behavior

Grade Level	N of Valid	N of Miss	Never	Seldom	Sometimes	Often	A Lot
4th	1154	23	3.5	5.0	15.6	26.9	49.0
5th	1256	25	3.0	6.1	16.6	26.7	47.7
6th	1882	45	3.2	6.4	17.1	28.3	45.0
7th	1404	25	2.5	6.7	17.0	29.5	44.4
8th	1249	27	3.2	6.6	16.4	30.1	43.6
9th	754	28	4.1	10.2	22.3	30.1	33.3
10th	467	6	4.5	11.3	22.3	30.0	31.9
11th	668	21	5.5	9.0	21.4	28.1	35.9
12th	455	12	4.2	9.0	24.2	26.8	35.8
Total	9289	212	3.5	7.1	18.1	28.5	42.9

Table 3.24: I See Ads On TV That Encourage Me To Talk To My Child About Drug Use

Grade Level	N of Valid	N of Miss	Never	Seldom	Sometimes	Often	A Lot
4th	1155	22	2.3	4.2	21.0	32.1	40.5
5th	1263	18	2.0	4.0	22.7	30.3	41.0
6th	1903	24	2.2	5.2	23.4	31.9	37.3
7th	1410	19	1.9	4.2	24.0	34.1	35.7
8th	1264	12	3.1	4.8	26.2	32.5	33.4
9th	767	15	2.5	6.3	24.4	38.5	28.4
10th	468	5	1.5	7.7	31.4	28.2	31.2
11th	683	6	2.5	6.1	30.2	34.0	27.2
12th	463	4	2.4	8.9	24.0	35.4	29.4
Total	9376	125	2.3	5.2	24.5	32.8	35.3

Table 3.25: My Child Participates In Community Activities Such as Scouts, Rec. Teams, Youth Clubs, Etc.

Grade Level	N of Valid	N of Miss	Never	Seldom	Sometimes	Often	A Lot
4th	1155	22	16.5	12.5	21.0	22.1	28.1
5th	1262	19	12.1	12.1	24.3	21.6	29.9
6th	1910	17	11.8	11.4	22.8	21.3	32.8
7th	1412	17	12.3	10.7	21.2	22.1	33.7
8th	1263	13	12.6	10.5	23.5	21.9	31.4
9th	769	13	15.1	12.4	24.1	21.7	26.8
10th	469	4	14.1	14.3	20.7	25.4	25.6
11th	681	8	10.9	14.1	22.3	22.0	30.7
12th	461	6	10.8	13.4	22.6	22.1	31.0
Total	9382	119	12.9	11.9	22.6	22.0	30.7

Table 3.26: My Child Participates In School Activities Such as Band, Clubs, Etc.

Grade Level	N of Valid	N of Miss	Never	Seldom	Sometimes	Often	A Lot
4th	1132	45	33.0	15.2	25.2	14.9	11.7
5th	1249	32	25.4	16.9	25.1	16.7	16.0
6th	1881	46	17.8	11.6	21.9	20.3	28.4
7th	1400	29	15.8	9.8	17.4	20.5	36.5
8th	1253	23	13.7	9.8	16.8	21.1	38.5
9th	756	26	13.5	9.3	20.0	23.4	33.9
10th	469	4	14.9	9.8	14.5	22.6	38.2
11th	679	10	11.5	9.1	17.4	21.1	40.9
12th	460	7	10.7	8.3	16.5	18.3	46.3
Total	9279	222	18.5	11.6	20.2	19.6	30.0

Table 3.27: The School Has Security (Police) Officer

Grade Level	N of Valid	N of Miss	Yes	No
4th	1131	46	53.3	46.7
5th	1222	56	57.9	42.1
6th	1824	103	40.1	59.9
7th	1367	62	59.8	40.2
8th	1231	45	51.5	48.5
9th	743	39	70.4	29.6
10th	461	12	65.3	34.7
11th	671	18	75.9	24.1
12th	439	28	65.6	34.4
Total	9089	409	56.3	43.7



Table 3.28: A Security (Police) Officer Can Prevent Violence At School

Grade Level	N of Valid	N of Miss	N of	
			Yes	No
4th	1123	54	69.7	30.3
5th	1216	65	71.3	28.7
6th	1816	111	58.0	42.0
7th	1354	75	71.9	28.1
8th	1214	62	64.7	35.3
9th	737	45	70.3	29.7
10th	456	17	68.9	31.1
11th	666	23	75.2	24.8
12th	435	32	69.9	30.1
Total	9017	484	67.6	32.4

Table 3.29: Every School Needs A Security (Police) Officer

Grade Level	N of Valid	N of Miss	N of	
			Yes	No
4th	1150	27	86.6	13.4
5th	1243	38	90.5	9.5
6th	1870	57	84.5	15.5
7th	1387	42	87.0	13.0
8th	1240	36	83.5	16.5
9th	755	27	86.2	13.8
10th	465	8	84.5	15.5
11th	680	9	85.6	14.4
12th	449	18	84.0	16.0
Total	9239	262	86.0	14.0

Table 3.30: My Child Has Skipped School Without My Permission

Grade Level	N of Valid	N of Miss	N of	
			Yes	No
4th	1156	21	2.0	98.0
5th	1251	30	1.0	99.0
6th	1896	31	1.5	98.5
7th	1404	25	2.1	97.9
8th	1254	22	4.5	95.5
9th	760	22	8.8	91.2
10th	465	8	6.5	93.5
11th	681	8	7.8	92.2
12th	455	12	12.7	87.3
Total	9322	179	3.9	96.1

### 3.4 Community Information

Table 3.31: Drug And Alcohol Use Is A Big Problem Facing Youth In My Community

Grade Level	N of Valid	N of Miss	Never	Seldom	Sometimes	Often	A Lot
4th	1148	29	11.1	10.7	24.8	21.5	31.8
5th	1255	26	10.0	10.4	22.3	23.1	34.3
6th	1899	28	8.8	11.0	23.1	24.2	32.9
7th	1401	28	7.9	9.6	24.2	23.8	34.5
8th	1260	16	8.4	9.7	23.5	26.9	31.5
9th	764	18	5.9	9.3	22.6	27.4	34.8
10th	470	3	4.7	10.2	21.1	30.9	33.2
11th	680	9	3.2	8.1	21.9	31.5	35.3
12th	462	5	5.0	8.2	20.3	29.4	37.0
Total	9339	162	8.0	10.0	23.1	25.4	33.5

Table 3.32: Youth Violence Is A Big Problem In My Community

Grade Level	N of Valid	N of Miss	Never	Seldom	Sometimes	Often	A Lot
4th	1144	33	18.3	27.7	27.4	12.6	14.1
5th	1252	29	16.5	29.5	29.0	12.2	12.9
6th	1887	40	17.2	34.2	27.3	11.0	10.2
7th	1387	42	14.3	33.4	28.8	12.2	11.2
8th	1251	25	15.8	33.3	29.7	10.1	11.1
9th	763	19	14.8	35.4	30.1	10.6	9.0
10th	464	9	11.6	37.3	32.8	9.1	9.3
11th	674	15	12.0	34.1	33.5	11.7	8.6
12th	455	12	11.4	38.7	28.4	12.1	9.5
Total	9277	224	15.5	33.0	29.1	11.4	11.0

Table 3.33: My Child Has Friends Who Drink Alcohol

Grade Level	N of Valid	N of Miss	Never	Seldom	Sometimes	Often	A Lot
4th	1141	36	94.8	3.0	0.9	0.4	1.0
5th	1243	38	92.8	3.9	2.3	0.6	0.6
6th	1861	66	87.0	7.7	3.6	1.0	0.7
7th	1377	52	73.5	15.8	8.3	1.0	1.4
8th	1224	52	64.5	18.9	10.5	3.2	2.9
9th	756	26	44.2	21.0	20.6	8.5	5.7
10th	458	15	34.5	20.5	26.4	11.1	7.4
11th	662	27	27.9	20.4	28.7	13.1	9.8
12th	454	13	20.7	16.1	32.6	18.5	12.1
Total	9176	325	70.0	12.4	10.5	4.0	3.1

Table 3.34: It Would Be Okay With Me For My Child To Use Alcohol If He/She Would Not Use Other Drugs

Grade Level	N of Valid	N of Miss	Never	Seldom	Sometimes	Often	A Lot
4th	1157	20	98.2	0.8	0.7	0.1	0.3
5th	1256	25	98.0	0.6	0.9	0.3	0.2
6th	1904	23	97.0	1.9	0.5	0.2	0.5
7th	1409	20	95.9	2.4	1.3	0.1	0.3
8th	1266	10	92.7	3.8	1.9	0.8	0.8
9th	767	15	89.8	5.7	2.5	0.8	1.2
10th	468	5	86.1	7.9	4.1	1.1	0.9
11th	682	7	87.7	7.5	3.2	1.0	0.6
12th	459	8	79.7	12.0	5.2	2.0	1.1
Total	9368	133	93.9	3.4	1.7	0.5	0.5

Table 3.35: Beer Ads Encourage Underage Drinking

Grade Level	N of Valid	N of Miss	Never	Seldom	Sometimes	Often	A Lot
4th	1145	32	20.6	11.8	27.9	16.0	23.7
5th	1256	25	19.6	10.7	25.7	17.8	26.2
6th	1881	46	16.6	10.6	28.6	16.7	27.4
7th	1393	36	14.4	10.6	27.4	19.6	28.1
8th	1255	21	14.6	10.7	28.0	18.6	28.1
9th	767	15	14.2	12.4	28.9	19.7	24.8
10th	463	10	11.2	12.5	30.2	18.8	27.2
11th	668	21	9.7	10.6	32.3	20.4	26.9
12th	459	8	10.9	10.7	27.9	21.1	29.4
Total	9287	214	15.6	11.0	28.2	18.3	26.8

Table 3.36: My Child Has Friends Who Use Tobacco

Grade Level	N of Valid	N of Miss	Never	Seldom	Sometimes	Often	A Lot
4th	1148	29	93.6	3.3	1.5	0.3	1.3
5th	1243	38	89.9	5.1	3.5	0.8	0.8
6th	1881	46	83.1	8.7	5.6	1.6	1.0
7th	1376	53	71.5	14.5	9.5	2.7	1.7
8th	1241	35	63.7	17.2	11.2	4.4	3.5
9th	757	25	46.4	16.9	18.6	10.0	8.1
10th	455	18	41.5	20.0	22.6	10.3	5.5
11th	667	22	31.3	20.4	25.2	12.4	10.6
12th	454	13	27.8	17.8	29.7	11.7	13.0
Total	9222	279	69.4	12.1	10.6	4.3	3.5

Table 3.37: My Child Has Friends Who Use Drugs

Grade Level	N of Valid	N of Miss	Never	Seldom	Sometimes	Often	A Lot
4th	1144	33	96.9	2.0	0.4	0.2	0.5
5th	1243	38	96.1	1.9	1.4	0.3	0.3
6th	1879	48	93.0	4.0	1.9	0.6	0.4
7th	1377	52	84.5	8.8	4.4	1.2	1.1
8th	1230	46	79.8	10.2	5.1	2.4	2.4
9th	750	32	64.4	16.1	10.8	5.3	3.3
10th	452	21	60.6	17.7	13.5	5.5	2.7
11th	655	34	53.7	22.0	14.5	5.3	4.4
12th	452	15	48.5	24.1	16.8	6.0	4.6
Total	9182	319	81.9	9.0	5.4	2.1	1.6

Table 3.38: It Would Be Okay With Me For My Child To Smoke A Little Pot If He/She Would Leave Other Drugs Alone

Grade Level	N of Valid	N of Miss	Never	Seldom	Sometimes	Often	A Lot
4th	1159	18	99.6	0.3	0.0	0.0	0.1
5th	1261	20	98.5	0.5	0.8	0.0	0.2
6th	1907	20	98.8	0.4	0.7	0.1	0.1
7th	1409	20	97.7	1.2	0.6	0.1	0.4
8th	1266	10	97.0	1.2	0.8	0.3	0.7
9th	771	11	95.7	1.3	1.7	0.6	0.6
10th	469	4	94.5	2.8	1.5	0.4	0.9
11th	678	11	94.7	2.5	1.3	0.6	0.9
12th	463	4	94.2	2.6	1.5	0.6	1.1
Total	9383	118	97.5	1.1	0.8	0.2	0.4

Table 3.39: My Child Has Had 5 Or More Glasses Of Beer, Coolers Or Liquor Within A Few Hours

Grade Level	N of Valid	N of Miss	Never	Seldom	Sometimes	Often	A Lot
4th	1156	21	99.4	0.3	0.1	0.0	0.2
5th	1257	24	99.0	0.4	0.4	0.0	0.2
6th	1906	21	99.4	0.2	0.3	0.1	0.1
7th	1407	22	98.5	0.4	0.6	0.2	0.2
8th	1264	12	97.1	1.2	0.9	0.3	0.6
9th	762	20	95.4	2.2	1.2	0.5	0.7
10th	468	5	93.4	3.4	1.5	1.3	0.4
11th	677	12	91.9	3.5	2.5	0.4	1.6
12th	458	9	87.1	6.1	3.7	1.3	1.7
Total	9355	146	97.1	1.3	0.9	0.3	0.4

Table 3.40: The Alcohol Industry Does A Good Job Of Discouraging Underage Drinking.

Grade Level	N of Valid	N of Miss	Never	Seldom	Sometimes	Often	A Lot
4th	1149	28	35.9	25.1	24.8	7.9	6.4
5th	1243	38	33.3	27.0	25.7	7.0	7.0
6th	1888	39	34.1	26.2	27.2	6.6	5.9
7th	1394	35	34.3	28.3	25.3	7.2	4.9
8th	1258	18	34.8	29.1	24.9	6.8	4.4
9th	760	22	34.5	31.3	24.1	6.2	3.9
10th	468	5	33.8	34.0	23.5	5.8	3.0
11th	666	23	33.0	34.2	24.8	5.1	2.9
12th	460	7	35.9	34.1	23.0	4.1	2.8
Total	9286	215	34.4	28.6	25.3	6.6	5.1

### 3.5 Impressions About Drug Use

Table 3.41: Harmfulness Of Use – Cigarettes

Grade Level	N of Valid	N of Miss	No Harm	Some Harm	Harmful	Very Harmful
4th	1162	15	0.8	0.6	7.7	90.9
5th	1267	14	0.9	1.3	8.9	89.0
6th	1909	18	0.6	1.5	8.3	89.6
7th	1410	19	0.9	1.9	9.6	87.5
8th	1266	10	0.9	2.1	10.2	86.8
9th	772	10	1.4	1.7	11.0	85.9
10th	467	6	0.0	1.5	11.3	87.2
11th	684	5	0.7	2.9	9.6	86.7
12th	461	6	0.7	2.0	10.2	87.2
Total	9398	103	0.8	1.6	9.3	88.2

Table 3.42: Harmfulness Of Use – Smokeless Tobacco (Chew, Etc.)

Grade Level	N of Valid	N of Miss	No Harm	Some Harm	Harmful	Very Harmful
4th	1158	19	0.9	1.9	10.0	87.2
5th	1267	14	0.8	1.9	11.8	85.5
6th	1907	20	0.9	2.5	11.7	84.8
7th	1409	20	1.1	3.3	12.0	83.5
8th	1267	9	0.9	3.1	13.4	82.6
9th	770	12	1.0	3.9	15.6	79.5
10th	465	8	0.0	3.2	14.0	82.8
11th	684	5	0.6	4.8	14.5	80.1
12th	461	6	0.7	3.3	14.8	81.3
Total	9388	113	0.9	2.9	12.6	83.7

Table 3.43: Harmfulness Of Use – Cigars

Grade Level	N of Valid	N of Miss	No Harm	Some Harm	Harmful	Very Harmful
4th	1158	19	0.9	1.6	9.0	88.6
5th	1266	15	0.9	1.3	10.8	87.0
6th	1904	23	0.7	1.7	9.2	88.3
7th	1406	23	0.9	2.5	11.4	85.3
8th	1267	9	0.9	2.6	11.8	84.6
9th	771	11	1.4	2.3	16.3	79.9
10th	466	7	0.2	3.2	13.7	82.8
11th	680	9	0.6	5.0	14.6	79.9
12th	459	8	0.9	3.3	14.2	81.7
Total	9377	124	0.9	2.3	11.5	85.3

Table 3.44: Harmfulness Of Use – Beer

Grade Level	N of Valid	N of Miss	No Harm	Some Harm	Harmful	Very Harmful
4th	1157	20	0.9	3.8	12.2	83.1
5th	1263	18	0.9	3.4	12.7	83.0
6th	1904	23	0.9	4.3	12.4	82.4
7th	1404	25	1.0	5.1	15.3	78.6
8th	1264	12	1.2	4.9	16.5	77.5
9th	771	11	1.7	7.3	21.7	69.4
10th	467	6	0.2	8.6	18.4	72.8
11th	682	7	1.2	10.0	21.6	67.3
12th	460	7	0.7	13.3	19.6	66.5
Total	9372	129	1.0	5.6	15.5	77.9

Table 3.45: Harmfulness Of Use – Coolers, Breezers, Hard Lemonades, Etc.

Grade Level	N of Valid	N of Miss	No Harm	Some Harm	Harmful	Very Harmful
4th	1156	21	1.6	5.4	12.0	81.0
5th	1264	17	1.3	5.1	14.6	79.0
6th	1896	31	1.4	5.7	13.1	79.8
7th	1408	21	1.8	5.0	15.4	77.7
8th	1263	13	2.0	7.1	16.8	74.1
9th	772	10	2.3	7.8	22.0	67.9
10th	463	10	1.1	9.9	19.9	69.1
11th	677	12	2.1	11.2	21.0	65.7
12th	460	7	2.0	13.3	20.9	63.9
Total	9359	142	1.7	6.8	16.0	75.4



Table 3.46: Harmfulness Of Use – Liquor

Grade Level	N of Valid	N of Miss	No Harm	Some Harm	Harmful	Very Harmful
4th	1161	16	0.9	1.6	8.4	89.1
5th	1263	18	1.1	1.5	9.6	87.8
6th	1904	23	0.7	2.2	9.2	88.0
7th	1407	22	1.1	2.1	9.8	87.0
8th	1263	13	1.0	2.4	10.9	85.7
9th	768	14	1.2	1.8	15.4	81.6
10th	465	8	0.0	3.4	14.2	82.4
11th	682	7	0.7	4.4	16.1	78.7
12th	461	6	0.2	5.9	18.9	75.1
Total	9374	127	0.9	2.4	11.2	85.5

Table 3.47: Harmfulness Of Use – Marijuana

Grade Level	N of Valid	N of Miss	No Harm	Some Harm	Harmful	Very Harmful
4th	1158	19	0.8	0.6	4.3	94.3
5th	1268	13	0.9	0.9	5.3	92.9
6th	1906	21	0.9	1.0	4.7	93.3
7th	1406	23	0.9	1.5	6.2	91.4
8th	1257	19	1.0	1.3	5.9	91.8
9th	767	15	1.4	1.7	10.2	86.7
10th	467	6	0.0	2.4	7.1	90.6
11th	682	7	1.0	2.2	10.6	86.2
12th	459	8	0.7	2.6	8.3	88.5
Total	9370	131	0.9	1.4	6.3	91.5

Table 3.48: Harmfulness Of Use – Cocaine (Crack, Etc)

Grade Level	N of Valid	N of Miss	No Harm	Some Harm	Harmful	Very Harmful
4th	1158	19	0.8	0.1	1.6	97.6
5th	1264	17	0.9	0.1	1.8	97.2
6th	1909	18	0.7	0.2	1.2	98.0
7th	1409	20	0.8	0.1	1.3	97.8
8th	1264	12	0.9	0.4	2.0	96.8
9th	769	13	1.2	0.1	2.6	96.1
10th	465	8	0.0	0.2	2.4	97.4
11th	679	10	0.4	0.9	2.4	96.3
12th	461	6	0.2	0.2	2.8	96.7
Total	9378	123	0.7	0.2	1.8	97.3

Table 3.49: Harmfulness Of Use – Crystal Meth (Ice, Crank, Etc.)

Grade Level	N of Valid	N of Miss	No Harm	Some Harm	Harmful	Very Harmful
4th	1158	19	0.8	0.1	1.3	97.8
5th	1262	19	1.0	0.1	2.1	96.8
6th	1902	25	0.6	0.2	1.1	98.1
7th	1407	22	0.8	0.1	1.1	98.1
8th	1262	14	1.0	0.4	2.0	96.7
9th	769	13	1.3	0.1	1.8	96.7
10th	465	8	0.0	0.4	2.4	97.2
11th	681	8	0.4	0.7	2.1	96.8
12th	459	8	0.2	0.7	1.7	97.4
Total	9365	136	0.7	0.2	1.6	97.4

### 3.6 During The Past Year Your Child Has Used

Table 3.50: Percent Of Use – Cigarettes

Grade Level	N of Valid	N of Miss	Did Not Use	1-6 Times a Year	1-2 Times a Month	1-7 Times a Week
4th	1141	36	99.3	0.3	0.1	0.4
5th	1250	31	99.3	0.3	0.1	0.3
6th	1884	43	98.6	1.0	0.1	0.4
7th	1396	33	97.5	1.1	0.8	0.6
8th	1253	23	96.4	1.3	0.6	1.8
9th	761	21	92.6	4.3	1.2	1.8
10th	461	12	93.7	3.3	0.9	2.2
11th	674	15	90.2	4.5	1.2	4.2
12th	454	13	89.4	4.4	2.0	4.2
Total	9274	227	96.5	1.7	0.5	1.3

Table 3.51: Percent Of Use – Smokeless Tobacco (Chew, Etc.)

Grade Level	N of Valid	N of Miss	Did Not Use	1-6 Times a Year	1-2 Times a Month	1-7 Times a Week
4th	1139	38	99.6	0.1	0.1	0.2
5th	1250	31	99.0	0.4	0.2	0.3
6th	1886	41	99.4	0.4	0.1	0.2
7th	1398	31	98.8	0.5	0.4	0.4
8th	1254	22	97.9	1.0	0.2	0.9
9th	760	22	94.5	3.6	1.1	0.9
10th	461	12	97.0	0.9	1.1	1.1
11th	675	14	95.6	2.1	0.3	2.1
12th	454	13	94.7	3.1	0.7	1.5
Total	9277	224	98.0	1.0	0.3	0.6

Table 3.52: Percent Of Use – Cigars

Grade Level	N of Valid	N of Miss	Did Not Use	1-6 Times a Year	1-2 Times a Month	1-7 Times a Week
4th	1141	36	99.6	0.2	0.0	0.2
5th	1251	30	99.4	0.2	0.2	0.3
6th	1888	39	99.7	0.1	0.0	0.2
7th	1396	33	99.2	0.2	0.2	0.4
8th	1249	27	98.3	0.6	0.3	0.7
9th	763	19	97.0	2.0	0.5	0.5
10th	462	11	97.8	1.9	0.0	0.2
11th	674	15	96.9	1.3	0.6	1.2
12th	453	14	95.1	3.3	1.1	0.4
Total	9277	224	98.7	0.7	0.2	0.4

Table 3.53: Percent Of Use – Beer

Grade Level	N of Valid	N of Miss	Did Not Use	1-6 Times a Year	1-2 Times a Month	1-7 Times a Week
4th	1142	35	99.2	0.4	0.2	0.3
5th	1250	31	99.3	0.2	0.2	0.3
6th	1889	38	99.3	0.5	0.0	0.2
7th	1398	31	97.9	1.1	0.6	0.4
8th	1248	28	96.5	1.9	0.8	0.8
9th	761	21	90.7	6.6	1.2	1.6
10th	459	14	87.4	9.6	2.4	0.7
11th	673	16	82.2	12.8	2.5	2.5
12th	453	14	74.8	15.9	6.8	2.4
Total	9273	228	95.0	3.3	1.0	0.8

Table 3.54: Percent Of Use – Coolers, Breezers, Hard Lemonades, Etc.

Grade Level	N of Valid	N of Miss	Did Not Use	1-6 Times a Year	1-2 Times a Month	1-7 Times a Week
4th	1140	37	99.2	0.4	0.3	0.2
5th	1248	33	99.3	0.4	0.1	0.2
6th	1885	42	98.6	1.1	0.0	0.3
7th	1397	32	98.5	0.4	0.8	0.3
8th	1252	24	95.4	2.7	0.9	1.0
9th	759	23	89.7	7.1	2.0	1.2
10th	458	15	87.1	10.3	1.7	0.9
11th	671	18	85.7	10.4	1.9	1.9
12th	451	16	82.9	12.4	3.8	0.9
Total	9261	240	95.3	3.2	0.9	0.6

Table 3.55: Percent Of Use – Liquor

Grade Level	N of Valid	N of Miss	Did Not Use	1-6 Times a Year	1-2 Times a Month	1-7 Times a Week
4th	1141	36	99.5	0.1	0.2	0.3
5th	1250	31	99.4	0.2	0.2	0.2
6th	1887	40	99.3	0.4	0.0	0.3
7th	1391	38	98.6	0.6	0.3	0.5
8th	1248	28	97.6	1.2	0.3	0.9
9th	760	22	94.3	3.4	1.2	1.1
10th	460	13	91.7	5.9	1.7	0.7
11th	673	16	89.5	7.1	2.1	1.3
12th	448	19	83.9	12.3	3.1	0.7
Total	9258	243	96.7	2.1	0.6	0.6

Table 3.56: Percent Of Use – Marijuana

Grade Level	N of Valid	N of Miss	Did Not Use	1-6 Times a Year	1-2 Times a Month	1-7 Times a Week
4th	1138	39	99.7	0.0	0.0	0.3
5th	1247	34	99.4	0.2	0.2	0.2
6th	1883	44	99.4	0.3	0.0	0.3
7th	1394	35	98.8	0.4	0.4	0.4
8th	1248	28	97.8	0.9	0.2	1.1
9th	761	21	95.9	1.6	1.4	1.1
10th	459	14	96.5	2.0	0.4	1.1
11th	674	15	94.1	3.3	1.3	1.3
12th	454	13	93.4	3.3	2.0	1.3
Total	9258	243	98.0	0.9	0.4	0.6

Table 3.57: Percent Of Use – Cocaine (Crack, Etc)

Grade Level	N of Valid	N of Miss	Did Not Use	1-6 Times a Year	1-2 Times a Month	1-7 Times a Week
4th	1138	39	99.7	0.0	0.1	0.2
5th	1249	32	99.6	0.0	0.2	0.2
6th	1888	39	99.7	0.0	0.1	0.2
7th	1396	33	99.4	0.1	0.1	0.4
8th	1248	28	99.4	0.1	0.2	0.4
9th	760	22	98.3	0.8	0.3	0.7
10th	461	12	98.7	0.4	0.4	0.4
11th	674	15	98.5	0.9	0.3	0.3
12th	453	14	98.9	0.7	0.0	0.4
Total	9267	234	99.3	0.2	0.2	0.3

Table 3.58: Percent Of Use – Crystal Meth (Ice, Crank, Etc.)

Grade Level	N of Valid	N of Miss	Did Not Use	1-6 Times a Year	1-2 Times a Month	1-7 Times a Week
4th	1136	41	99.7	0.0	0.1	0.2
5th	1247	34	99.5	0.2	0.1	0.2
6th	1880	47	99.7	0.1	0.0	0.2
7th	1394	35	99.6	0.1	0.1	0.3
8th	1248	28	99.4	0.1	0.2	0.4
9th	759	23	98.6	0.9	0.0	0.5
10th	461	12	98.7	0.4	0.7	0.2
11th	674	15	99.0	0.4	0.1	0.4
12th	453	14	99.6	0.2	0.0	0.2
Total	9252	249	99.4	0.2	0.1	0.3

### 3.7 How Easy Is It For Students In Your Child's Grade To Get

Table 3.59: How Easy Is It For Students In Your Child's Grade To Get Cigarettes

Grade Level	N of Valid	N of Miss	Cannot Get	Very Difficult	Fairly Difficult	Fairly Easy	Very Easy
4th	1117	60	49.6	17.8	14.3	12.6	5.6
5th	1224	57	40.4	18.5	17.7	17.0	6.5
6th	1839	88	30.1	17.9	17.3	23.6	11.1
7th	1359	70	23.0	13.4	17.0	29.7	16.9
8th	1215	61	18.1	10.8	19.2	32.2	19.8
9th	748	34	12.2	7.6	15.0	36.8	28.5
10th	454	19	9.5	6.6	11.2	37.9	34.8
11th	662	27	6.6	4.2	9.2	38.7	41.2
12th	447	20	8.1	4.0	7.8	32.0	48.1
Total	9065	436	25.9	13.2	15.6	26.7	18.5

Table 3.60: How Easy Is It For Students In Your Child's Grade To Get Smokeless Tobacco (Chew, Etc.)

Grade Level	N of Valid	N of Miss	Cannot Get	Very Difficult	Fairly Difficult	Fairly Easy	Very Easy
4th	1119	58	51.7	18.5	14.4	10.5	4.9
5th	1222	59	41.7	19.3	17.6	15.5	5.8
6th	1827	100	32.5	18.2	17.4	21.7	10.2
7th	1354	75	24.9	13.4	18.1	27.7	16.0
8th	1210	66	21.0	11.7	18.4	29.9	19.0
9th	744	38	14.0	8.6	13.6	34.1	29.7
10th	452	21	11.5	6.2	11.1	38.1	33.2
11th	659	30	7.7	5.0	9.1	36.1	42.0
12th	444	23	9.5	4.5	9.2	29.7	47.1
Total	9031	470	27.9	13.8	15.7	24.8	17.9

Table 3.61: How Easy Is It For Students In Your Child's Grade To Get Cigars

Grade Level	N of Valid	N of Miss	Cannot Get	Very Difficult	Fairly Difficult	Fairly Easy	Very Easy
4th	1116	61	53.8	19.6	13.9	9.0	3.8
5th	1224	57	44.1	21.2	18.8	11.4	4.5
6th	1829	98	34.8	20.4	20.0	17.5	7.3
7th	1345	84	27.7	17.0	20.2	23.4	11.7
8th	1205	71	22.9	13.6	22.5	27.2	13.8
9th	743	39	15.7	10.5	20.7	31.4	21.7
10th	450	23	12.0	9.1	15.3	36.4	27.1
11th	657	32	8.7	5.9	14.3	38.1	33.0
12th	441	26	9.8	4.5	12.9	32.2	40.6
Total	9010	491	29.9	15.8	18.5	22.1	13.7

Table 3.62: How Easy Is It For Students In Your Child's Grade To Get Beer

Grade Level	N of Valid	N of Miss	Cannot Get	Very Difficult	Fairly Difficult	Fairly Easy	Very Easy
4th	1113	64	53.7	19.4	12.8	10.2	3.8
5th	1222	59	45.5	22.2	16.4	11.5	4.4
6th	1833	94	35.5	20.9	19.7	17.1	6.8
7th	1351	78	27.5	17.3	19.9	23.2	12.1
8th	1211	65	21.3	14.7	20.5	28.1	15.4
9th	744	38	14.7	10.8	19.1	32.5	23.0
10th	449	24	10.2	10.2	13.4	37.0	29.2
11th	662	27	8.3	5.6	14.7	38.8	32.6
12th	446	21	8.5	5.2	12.3	32.1	41.9
Total	9031	470	29.7	16.3	17.5	22.5	14.1



Table 3.63: How Easy Is It For Students In Your Child's Grade To Get Coolers, Breezers, Hard Lemonades, Etc.

Grade Level	N of Valid	N of Miss	Cannot Get	Very Difficult	Fairly Difficult	Fairly Easy	Very Easy
4th	1111	66	54.5	20.1	12.9	9.2	3.3
5th	1223	58	46.3	23.7	15.5	10.0	4.5
6th	1833	94	36.8	21.7	19.2	15.9	6.4
7th	1346	83	28.5	18.6	20.7	21.7	10.5
8th	1210	66	23.0	15.3	21.5	26.1	14.1
9th	742	40	15.8	10.4	20.2	32.6	21.0
10th	454	19	10.4	8.8	14.8	37.2	28.9
11th	659	30	8.6	6.4	15.2	37.8	32.0
12th	443	24	8.8	5.4	12.9	33.2	39.7
Total	9021	480	30.7	16.9	17.7	21.4	13.3

Table 3.64: How Easy Is It For Students In Your Child's Grade To Get Liquor

Grade Level	N of Valid	N of Miss	Cannot Get	Very Difficult	Fairly Difficult	Fairly Easy	Very Easy
4th	1113	64	55.6	19.9	12.6	8.7	3.1
5th	1223	58	49.2	23.1	16.0	8.0	3.6
6th	1833	94	37.8	24.0	18.4	14.5	5.3
7th	1346	83	30.8	19.8	20.1	19.7	9.6
8th	1211	65	24.1	17.6	23.2	23.0	12.1
9th	739	43	17.7	13.8	20.7	28.6	19.2
10th	453	20	11.3	9.9	19.4	33.8	25.6
11th	662	27	9.1	8.6	18.9	37.3	26.1
12th	443	24	9.5	8.6	15.1	31.2	35.7
Total	9023	478	32.2	18.5	18.4	19.4	11.5

Table 3.65: How Easy Is It For Students In Your Child's Grade To Get Marijuana

Grade Level	N of Valid	N of Miss	Cannot Get	Very Difficult	Fairly Difficult	Fairly Easy	Very Easy
4th	1113	64	59.2	20.5	10.6	6.6	3.1
5th	1222	59	50.3	23.2	14.6	8.0	3.9
6th	1826	101	41.2	23.9	17.0	12.3	5.6
7th	1349	80	32.7	21.1	19.2	17.6	9.4
8th	1211	65	26.0	20.2	21.9	20.7	11.1
9th	738	44	19.4	13.1	21.4	27.1	19.0
10th	450	23	14.0	12.7	18.9	30.0	24.4
11th	658	31	9.4	9.3	17.9	38.6	24.8
12th	441	26	11.1	9.3	15.9	33.1	30.6
Total	9008	493	34.4	19.2	17.3	18.0	11.0

Table 3.66: How Easy Is It For Students In Your Child's Grade To Get Cocaine (Crack, Etc)

Grade Level	N of Valid	N of Miss	Cannot Get	Very Difficult	Fairly Difficult	Fairly Easy	Very Easy
4th	1114	63	61.3	21.0	10.4	4.7	2.6
5th	1219	62	53.7	25.1	12.7	5.4	3.1
6th	1826	101	46.0	26.2	15.3	8.2	4.3
7th	1343	86	37.4	24.1	19.9	12.1	6.5
8th	1209	67	32.7	23.2	21.3	14.7	8.1
9th	735	47	26.0	20.7	20.7	21.1	11.6
10th	445	28	20.0	19.8	23.8	21.3	15.1
11th	652	37	12.9	17.9	27.8	26.2	15.2
12th	441	26	15.2	16.1	24.5	25.6	18.6
Total	8984	517	39.0	22.8	18.1	12.7	7.4

Table 3.67: How Easy Is It For Students In Your Child's Grade To Get Uppers (Stimulants)

Grade Level	N of Valid	N of Miss	Cannot Get	Very Difficult	Fairly Difficult	Fairly Easy	Very Easy
4th	1112	65	60.0	21.1	11.5	4.9	2.5
5th	1220	61	52.6	24.4	13.9	6.1	3.0
6th	1826	101	44.5	24.4	15.9	10.3	4.9
7th	1341	88	35.8	23.2	19.7	13.9	7.5
8th	1205	71	30.9	21.2	21.7	17.7	8.5
9th	731	51	24.8	17.0	22.2	24.2	11.9
10th	448	25	20.3	16.7	23.2	25.4	14.3
11th	651	38	13.2	14.9	22.9	30.6	18.4
12th	434	33	14.1	14.5	21.7	29.0	20.7
Total	8968	533	37.8	21.2	18.1	14.8	8.0

Table 3.68: How Easy Is It For Students In Your Child's Grade To Get Downers (Depressants)

Grade Level	N of Valid	N of Miss	Cannot Get	Very Difficult	Fairly Difficult	Fairly Easy	Very Easy
4th	1114	63	59.8	20.6	11.8	5.4	2.5
5th	1218	63	52.2	24.6	13.8	6.0	3.4
6th	1823	104	43.8	24.7	15.9	10.5	5.1
7th	1340	89	35.5	23.1	20.1	14.1	7.2
8th	1199	77	30.5	21.2	22.3	17.5	8.5
9th	734	48	24.1	18.1	20.0	25.1	12.7
10th	448	25	20.1	16.7	22.8	25.9	14.5
11th	648	41	13.4	13.9	24.2	30.2	18.2
12th	436	31	14.2	14.0	21.6	28.9	21.3
Total	8960	541	37.5	21.2	18.1	15.0	8.1

Table 3.69: How Easy Is It For Students In Your Child's Grade To Get Inhalants (Glue, Etc)

Grade Level	N of Valid	N of Miss	Cannot Get	Very Difficult	Fairly Difficult	Fairly Easy	Very Easy
4th	1109	68	54.3	16.6	10.7	10.5	7.9
5th	1219	62	45.5	19.4	12.1	13.1	9.8
6th	1828	99	36.2	17.9	13.7	17.1	15.2
7th	1343	86	29.1	14.7	15.3	19.7	21.1
8th	1195	81	25.6	14.0	16.1	21.6	22.8
9th	729	53	19.1	11.7	14.3	27.8	27.2
10th	445	28	18.2	11.2	14.4	29.2	27.0
11th	647	42	11.1	7.7	17.8	29.2	34.2
12th	435	32	13.6	9.4	13.6	24.8	38.6
Total	8950	551	32.0	15.0	14.0	19.5	19.5

Table 3.70: How Easy Is It For Students In Your Child's Grade To Get Hallucinogens (PCP, LSD, Etc)

Grade Level	N of Valid	N of Miss	Cannot Get	Very Difficult	Fairly Difficult	Fairly Easy	Very Easy
4th	1111	66	63.3	20.8	10.6	3.4	1.9
5th	1217	64	54.9	26.9	11.9	3.7	2.6
6th	1828	99	47.8	27.0	13.9	7.9	3.4
7th	1339	90	39.5	26.1	19.5	9.6	5.4
8th	1203	73	35.7	24.6	21.4	12.1	6.3
9th	730	52	28.6	22.5	22.3	17.5	9.0
10th	445	28	22.5	22.9	25.4	18.4	10.8
11th	643	46	16.6	20.1	28.1	22.7	12.4
12th	434	33	16.1	19.8	27.4	22.4	14.3
Total	8950	551	41.2	24.3	18.0	10.7	5.8

Table 3.71: How Easy Is It For Students In Your Child's Grade To Get Heroin (Opiates)

Grade Level	N of Valid	N of Miss	Cannot Get	Very Difficult	Fairly Difficult	Fairly Easy	Very Easy
4th	1113	64	63.5	21.8	9.5	3.3	1.8
5th	1223	58	55.2	26.2	11.9	4.0	2.7
6th	1822	105	49.5	27.6	12.1	7.7	3.1
7th	1339	90	41.2	26.9	17.6	9.1	5.3
8th	1203	73	37.9	24.9	19.9	11.7	5.7
9th	730	52	30.7	24.5	21.2	16.4	7.1
10th	443	30	24.2	28.9	21.2	15.8	9.9
11th	642	47	18.5	23.4	27.7	20.1	10.3
12th	432	35	19.2	22.7	28.2	17.6	12.3
Total	8947	554	42.7	25.5	16.7	9.9	5.2

Table 3.72: How Easy Is It For Students In Your Child's Grade To Get Anabolic Steroids

Grade Level	N of Valid	N of Miss	Cannot Get	Very Difficult	Fairly Difficult	Fairly Easy	Very Easy
4th	1110	67	63.3	20.6	10.6	3.7	1.7
5th	1218	63	54.5	26.1	12.5	4.1	2.8
6th	1823	104	47.7	27.0	13.8	8.0	3.5
7th	1336	93	38.2	24.7	20.2	11.2	5.7
8th	1200	76	34.7	22.8	23.2	13.5	5.8
9th	730	52	27.1	20.3	23.3	19.7	9.6
10th	443	30	21.4	22.3	23.0	20.1	13.1
11th	645	44	16.7	16.3	26.8	26.4	13.8
12th	434	33	15.9	16.1	25.8	25.3	16.8
Total	8939	562	40.7	23.1	18.2	11.9	6.2

Table 3.73: How Easy Is It For Students In Your Child's Grade To Get Ecstasy (MDMA)

Grade Level	N of Valid	N of Miss	Cannot Get	Very Difficult	Fairly Difficult	Fairly Easy	Very Easy
4th	1110	67	63.3	21.7	9.6	3.5	1.8
5th	1220	61	55.1	25.4	12.0	4.2	3.3
6th	1818	109	49.0	26.8	12.9	7.5	3.7
7th	1342	87	38.9	25.6	19.0	11.0	5.5
8th	1198	78	35.8	24.2	20.9	12.9	6.3
9th	726	56	28.4	20.4	21.1	20.7	9.5
10th	444	29	23.0	23.4	20.7	21.2	11.7
11th	644	45	16.1	18.5	26.2	24.4	14.8
12th	432	35	16.7	19.7	24.8	21.8	17.1
Total	8934	567	41.4	23.8	17.0	11.5	6.3

Table 3.74: How Easy Is It For Students In Your Child's Grade To Get OxyContin

Grade Level	N of Valid	N of Miss	Cannot Get	Very Difficult	Fairly Difficult	Fairly Easy	Very Easy
4th	1107	70	63.1	20.9	10.4	3.8	1.8
5th	1213	68	54.8	24.8	12.5	4.6	3.2
6th	1818	109	47.3	26.7	13.9	8.3	3.9
7th	1336	93	38.2	26.2	19.9	9.9	5.8
8th	1200	76	36.2	22.5	21.6	13.6	6.2
9th	732	50	27.9	20.2	21.9	20.9	9.2
10th	440	33	24.3	23.6	21.4	19.3	11.4
11th	643	46	17.0	19.6	24.4	23.5	15.6
12th	431	36	17.4	18.8	25.8	22.3	15.8
Total	8920	581	41.1	23.5	17.6	11.5	6.3

Table 3.75: How Easy Is It For Students In Your Child's Grade To Get Crystal Meth (Ice, Crank, Etc.)

Grade Level	N of Valid	N of Miss	Cannot Get	Very Difficult	Fairly Difficult	Fairly Easy	Very Easy
4th	1108	69	62.8	21.8	9.3	3.9	2.3
5th	1217	64	54.3	26.0	11.2	5.1	3.5
6th	1820	107	48.2	25.7	13.2	8.4	4.6
7th	1334	95	39.5	23.4	18.9	11.4	6.8
8th	1202	74	36.3	22.1	19.7	14.5	7.4
9th	734	48	29.3	18.5	19.9	21.5	10.8
10th	443	30	23.3	23.5	21.0	19.2	13.1
11th	641	48	17.2	18.1	24.0	24.5	16.2
12th	435	32	17.7	17.5	24.1	21.1	19.5
Total	8934	567	41.4	22.8	16.4	12.0	7.4

Table 3.76: How Easy Is It For Students In Your Child's Grade To Get A Gun

Grade Level	N of Valid	N of Miss	Cannot Get	Very Difficult	Fairly Difficult	Fairly Easy	Very Easy
4th	1108	69	51.9	18.1	14.5	9.6	5.9
5th	1217	64	44.9	19.6	16.3	11.3	7.9
6th	1812	115	39.2	21.0	15.6	14.6	9.5
7th	1340	89	32.8	18.7	17.5	17.4	13.6
8th	1195	81	29.3	18.8	18.9	19.0	14.0
9th	730	52	23.0	15.5	18.8	22.1	20.7
10th	445	28	21.1	17.3	17.5	21.6	22.5
11th	646	43	14.6	14.4	19.2	27.2	24.6
12th	436	31	17.2	18.6	20.2	20.4	23.6
Total	8929	572	34.2	18.6	17.1	16.7	13.4

### 3.8 Safety at School

Table 3.77: While At School My Child Feels Safe In The Classroom

Grade Level	N of Valid	N of Miss	Never	Seldom	Sometimes	Often	A Lot
4th	1135	42	1.7	1.2	7.4	23.0	66.7
5th	1251	30	1.4	1.0	6.8	23.5	67.4
6th	1875	52	1.1	1.6	9.6	24.7	63.0
7th	1390	39	1.9	1.7	10.2	26.9	59.4
8th	1241	35	2.7	2.3	9.3	27.2	58.5
9th	750	32	2.5	1.9	11.2	29.1	55.3
10th	460	13	2.2	2.4	8.9	30.7	55.9
11th	670	19	1.6	1.0	8.7	27.6	61.0
12th	453	14	2.6	2.4	6.8	23.6	64.5
Total	9225	276	1.8	1.6	8.9	25.8	61.8

Table 3.78: While At School My Child Feels Safe In The Cafeteria

Grade Level	N of Valid	N of Miss	Never	Seldom	Sometimes	Often	A Lot
4th	1133	44	1.9	1.8	9.4	25.2	61.8
5th	1248	33	1.4	1.5	7.9	26.9	62.3
6th	1874	53	1.9	2.9	10.1	29.7	55.5
7th	1389	40	2.6	3.0	13.3	30.7	50.4
8th	1239	37	3.5	3.1	11.5	28.9	53.0
9th	748	34	2.5	2.4	14.6	32.9	47.6
10th	460	13	2.6	3.7	12.0	33.3	48.5
11th	670	19	2.2	1.6	10.1	31.6	54.3
12th	452	15	2.0	3.3	8.6	28.8	57.3
Total	9213	288	2.2	2.5	10.8	29.3	55.1

Table 3.79: While At School My Child Feels Safe In The Halls

Grade Level	N of Valid	N of Miss	Never	Seldom	Sometimes	Often	A Lot
4th	1132	45	2.3	2.5	11.7	25.2	58.3
5th	1250	31	2.1	2.0	10.5	28.2	57.3
6th	1869	58	3.2	3.9	14.4	28.8	49.8
7th	1386	43	3.5	4.5	17.1	30.2	44.7
8th	1240	36	3.9	4.4	16.0	28.1	47.7
9th	748	34	3.3	4.4	15.2	32.9	44.1
10th	458	15	2.6	3.9	14.6	32.8	46.1
11th	669	20	2.2	2.1	12.1	31.5	52.0
12th	453	14	2.9	4.0	9.7	30.0	53.4
Total	9205	296	3.0	3.5	13.9	29.2	50.5

Table 3.80: While At School My Child Feels Safe In the Bathroom

Grade Level	N of Valid	N of Miss	Never	Seldom	Sometimes	Often	A Lot
4th	1130	47	3.4	3.7	13.9	24.0	55.0
5th	1248	33	2.8	3.0	13.6	28.0	52.6
6th	1866	61	4.9	4.9	15.4	28.7	46.1
7th	1387	42	5.0	4.9	18.8	29.2	42.1
8th	1239	37	5.6	4.9	15.7	28.1	45.6
9th	746	36	4.3	4.8	16.8	31.5	42.6
10th	457	16	3.9	3.7	17.7	29.8	44.9
11th	669	20	2.7	3.6	15.2	31.2	47.2
12th	454	13	3.7	4.6	13.2	28.2	50.2
Total	9196	305	4.2	4.3	15.6	28.5	47.4

Table 3.81: While At School My Child Feels Safe In The Gym

Grade Level	N of Valid	N of Miss	Never	Seldom	Sometimes	Often	A Lot
4th	1121	56	2.6	2.7	11.2	25.2	58.3
5th	1237	44	3.0	1.6	9.7	26.3	59.4
6th	1865	62	2.7	3.2	13.0	28.7	52.4
7th	1381	48	3.3	4.1	14.1	28.7	49.9
8th	1242	34	3.6	3.8	13.5	28.6	50.5
9th	745	37	3.0	3.1	15.0	31.4	47.5
10th	456	17	2.9	3.7	11.8	31.6	50.0
11th	668	21	1.8	1.3	11.5	33.1	52.2
12th	452	15	3.1	4.0	11.3	26.1	55.5
Total	9167	334	2.9	3.0	12.5	28.5	53.1

Table 3.82: While At School My Child Feels Safe On The School Bus

Grade Level	N of Valid	N of Miss	Never	Seldom	Sometimes	Often	A Lot
4th	1066	111	6.9	5.3	16.9	22.5	48.4
5th	1185	96	5.3	4.1	16.9	26.3	47.3
6th	1785	142	5.9	5.9	14.6	28.6	44.9
7th	1335	94	6.3	5.0	18.1	29.3	41.3
8th	1191	85	7.2	5.5	17.4	27.3	42.6
9th	719	63	6.1	5.1	16.4	29.2	43.1
10th	432	41	4.9	5.6	14.8	29.4	45.4
11th	638	51	4.2	3.8	15.7	31.5	44.8
12th	436	31	5.7	5.3	14.2	23.4	51.4
Total	8787	714	6.0	5.1	16.3	27.5	45.0

Table 3.83: While At School My Child Feels Safe At School Events

Grade Level	N of Valid	N of Miss	Never	Seldom	Sometimes	Often	A Lot
4th	1112	65	4.0	2.9	12.3	26.3	54.5
5th	1227	54	2.6	2.3	12.2	28.7	54.2
6th	1847	80	3.2	3.5	14.6	30.2	48.6
7th	1366	63	3.4	3.1	15.4	31.5	46.6
8th	1235	41	4.2	3.4	15.8	30.6	46.0
9th	747	35	3.2	4.4	14.1	33.2	45.1
10th	456	17	2.9	3.3	13.2	36.0	44.7
11th	668	21	2.1	1.5	15.1	34.1	47.2
12th	451	16	3.3	3.3	12.2	30.8	50.3
Total	9109	392	3.3	3.1	14.1	30.6	48.9

Table 3.84: While At School My Child Feels Safe On The Playground

Grade Level	N of Valid	N of Miss	Never	Seldom	Sometimes	Often	A Lot
4th	1120	57	3.4	4.0	15.5	24.8	52.2
5th	1248	33	3.0	2.3	12.7	28.8	53.1
6th	1855	72	3.5	3.5	15.5	30.2	47.3
7th	1360	69	5.0	4.0	15.2	29.9	45.9
8th	1222	54	4.7	3.7	15.4	28.7	47.5
9th	718	64	4.7	3.8	14.2	31.2	46.1
10th	439	34	3.2	3.4	15.3	32.3	45.8
11th	644	45	3.6	1.4	13.4	32.9	48.8
12th	436	31	3.9	3.7	11.9	26.8	53.7
Total	9042	459	3.9	3.4	14.6	29.3	48.8



Table 3.85: While At School My Child Feels Safe In The Parking Lot

Grade Level	N of Valid	N of Miss	Never	Seldom	Sometimes	Often	A Lot
4th	1124	53	5.1	4.3	13.5	25.5	51.6
5th	1233	48	5.4	3.6	11.9	27.6	51.6
6th	1852	75	6.2	5.3	15.1	29.2	44.3
7th	1378	51	6.4	4.7	14.9	31.7	42.2
8th	1230	46	5.5	4.5	16.5	29.8	43.7
9th	745	37	5.5	4.2	17.6	31.7	41.1
10th	453	20	3.8	4.0	15.0	34.9	42.4
11th	667	22	3.1	3.0	17.7	30.3	45.9
12th	452	15	4.0	5.3	12.6	28.3	49.8
Total	9134	367	5.4	4.4	14.9	29.5	45.8

### 3.9 Effectiveness of Solutions

Table 3.86: School-based Education About The Harmful Effects Of Drug And Alcohol Use

Grade Level	N of Valid	N of Miss	Strongly Agree	Agree	Undecided	Disagree	Strongly Disagree
4th	1120	57	62.0	27.0	5.3	1.9	3.9
5th	1221	60	62.5	28.4	4.9	1.6	2.5
6th	1845	82	61.1	30.1	4.9	1.6	2.3
7th	1380	49	56.4	32.6	6.4	2.0	2.7
8th	1226	50	54.8	30.6	7.9	3.0	3.7
9th	751	31	50.3	34.6	9.3	3.2	2.5
10th	455	18	47.0	37.4	9.0	2.9	3.7
11th	670	19	48.1	33.7	9.3	4.0	4.9
12th	444	23	47.7	37.8	7.9	2.9	3.6
Total	9112	389	56.6	31.3	6.6	2.3	3.1

Table 3.87: TV Ads On Preventing Drug Use By Youth

Grade Level	N of Valid	N of Miss	Strongly Agree	Agree	Undecided	Disagree	Strongly Disagree
4th	1124	53	50.6	32.5	9.9	3.0	4.0
5th	1228	53	49.7	34.9	9.0	3.3	3.0
6th	1847	80	48.1	36.8	8.7	3.6	2.8
7th	1378	51	44.9	36.5	10.8	5.0	2.8
8th	1221	55	41.8	36.4	12.1	5.8	3.9
9th	750	32	39.7	38.4	12.7	6.3	2.9
10th	455	18	40.2	37.1	13.2	5.9	3.5
11th	664	25	38.6	38.1	13.0	6.5	3.9
12th	449	18	35.6	39.9	16.0	5.1	3.3
Total	9116	385	44.9	36.3	10.9	4.6	3.3

Table 3.88: TV Ads On Preventing Alcohol Use By Youth

Grade Level	N of Valid	N of Miss	Strongly Agree	Agree	Undecided	Disagree	Strongly Disagree
4th	1114	63	49.8	33.1	9.6	3.6	3.9
5th	1223	58	49.1	34.5	9.6	3.7	3.1
6th	1834	93	48.0	35.7	9.2	4.3	2.8
7th	1367	62	44.4	34.8	12.0	5.5	3.3
8th	1219	57	40.6	35.4	13.0	6.7	4.3
9th	745	37	39.3	38.9	12.6	6.3	2.8
10th	451	22	40.4	36.6	13.3	6.7	3.1
11th	664	25	38.1	35.5	14.6	7.8	3.9
12th	447	20	34.7	38.0	17.7	6.7	2.9
Total	9064	437	44.4	35.5	11.5	5.3	3.4

Table 3.89: Religious Institutions Providing Drug Education To Young People

Grade Level	N of Valid	N of Miss	Strongly Agree	Agree	Undecided	Disagree	Strongly Disagree
4th	1121	56	54.7	30.6	7.9	2.8	4.0
5th	1224	57	55.5	30.9	8.7	2.0	3.0
6th	1845	82	53.6	32.4	9.2	2.2	2.7
7th	1377	52	49.6	33.1	11.2	3.1	3.1
8th	1230	46	47.0	35.0	11.2	3.4	3.3
9th	748	34	42.4	37.2	13.6	4.4	2.4
10th	457	16	42.7	39.4	12.3	3.1	2.6
11th	667	22	41.5	35.1	14.4	6.3	2.7
12th	446	21	42.4	37.0	13.5	3.6	3.6
Total	9115	386	49.6	33.6	10.6	3.1	3.0

Table 3.90: Parents Providing Drug Education To Their Children

Grade Level	N of Valid	N of Miss	Strongly Agree	Agree	Undecided	Disagree	Strongly Disagree
4th	1124	53	69.6	22.2	2.5	1.5	4.2
5th	1227	54	70.6	22.3	3.1	1.1	2.9
6th	1853	74	72.2	21.8	2.5	1.0	2.5
7th	1380	49	69.4	21.4	4.3	1.7	3.0
8th	1229	47	65.7	24.5	4.4	2.3	3.2
9th	752	30	64.9	25.8	6.1	0.9	2.3
10th	453	20	61.1	28.7	4.4	3.1	2.6
11th	670	19	61.0	25.8	7.6	2.4	3.1
12th	446	21	59.6	30.3	5.8	1.8	2.5
Total	9134	367	67.8	23.6	4.0	1.6	3.0

Table 3.91: Parents Taking Responsibility For Their Children's Use Of Drugs And Alcohol

Grade Level	N of Valid	N of Miss	Strongly Agree	Agree	Undecided	Disagree	Strongly Disagree
4th	1122	55	67.7	19.6	4.9	3.0	4.7
5th	1226	55	68.0	20.1	5.2	2.7	3.9
6th	1849	78	68.1	19.3	5.8	3.0	3.7
7th	1377	52	67.8	18.2	6.8	3.3	4.0
8th	1227	49	64.0	21.6	6.6	3.7	4.2
9th	751	31	67.1	20.4	5.9	3.7	2.9
10th	457	16	62.6	22.8	7.0	4.8	2.8
11th	668	21	62.1	21.3	8.4	3.9	4.3
12th	449	18	61.9	25.2	6.2	2.7	4.0
Total	9126	375	66.3	20.3	6.2	3.3	3.9

Table 3.92: News Media Keeping Parents/Public Informed About Student Drug Use And Violence

Grade Level	N of Valid	N of Miss	Strongly Agree	Agree	Undecided	Disagree	Strongly Disagree
4th	1119	58	54.9	31.1	8.0	2.3	3.8
5th	1218	63	55.1	32.8	7.1	2.5	2.5
6th	1851	76	53.9	32.1	8.4	3.2	2.3
7th	1374	55	50.1	33.6	10.0	3.6	2.6
8th	1227	49	48.2	35.5	9.4	3.5	3.5
9th	750	32	45.7	34.8	13.2	3.6	2.7
10th	456	17	44.1	34.4	15.6	3.7	2.2
11th	669	20	42.2	36.8	13.2	4.5	3.4
12th	447	20	44.1	35.6	13.9	3.6	2.9
Total	9111	390	50.3	33.6	9.9	3.3	2.9

Table 3.93: Schools Keeping Parents/Public Informed About Student Drug Use And Violence

Grade Level	N of Valid	N of Miss	Strongly Agree	Agree	Undecided	Disagree	Strongly Disagree
4th	1119	58	63.4	25.0	5.6	2.4	3.6
5th	1225	56	63.6	26.5	4.9	2.2	2.8
6th	1852	75	63.1	26.1	4.6	3.1	3.0
7th	1380	49	59.3	27.2	7.0	3.3	3.3
8th	1224	52	56.3	29.3	7.4	3.1	3.8
9th	753	29	53.7	31.2	9.3	3.1	2.8
10th	455	18	47.5	35.2	11.0	2.9	3.5
11th	668	21	52.2	29.0	9.3	3.7	5.7
12th	448	19	53.8	30.4	8.3	4.2	3.3
Total	9124	377	58.9	27.9	6.8	3.0	3.4

Table 3.94: Community Anti-drug Coalition For Keeping Students Drug Free

Grade Level	N of Valid	N of Miss	Strongly Agree	Agree	Undecided	Disagree	Strongly Disagree
4th	1112	65	57.2	28.6	9.0	2.1	3.1
5th	1218	63	56.3	30.0	8.9	2.0	2.7
6th	1831	96	54.8	31.0	9.1	2.8	2.4
7th	1365	64	51.1	32.5	11.1	2.5	2.9
8th	1224	52	48.4	33.0	12.5	2.9	3.2
9th	747	35	45.0	34.7	14.6	3.5	2.3
10th	453	20	42.8	36.4	14.1	4.0	2.6
11th	662	27	42.3	34.7	13.7	5.3	3.9
12th	447	20	43.8	34.9	13.4	5.4	2.5
Total	9059	442	51.0	32.1	11.1	3.0	2.8

Table 3.95: After School Activities For Students At School

Grade Level	N of Valid	N of Miss	Strongly Agree	Agree	Undecided	Disagree	Strongly Disagree
4th	1105	72	57.4	29.3	7.7	2.3	3.3
5th	1211	70	55.5	31.0	8.9	2.3	2.3
6th	1838	89	55.8	30.5	9.1	2.0	2.6
7th	1364	65	53.7	33.1	9.2	1.8	2.2
8th	1225	51	50.0	32.7	10.9	3.0	3.4
9th	744	38	50.5	33.2	10.3	3.5	2.4
10th	453	20	47.0	36.2	11.3	2.9	2.6
11th	660	29	47.0	32.3	12.7	3.5	4.5
12th	440	27	48.4	33.6	13.4	2.3	2.3
Total	9040	461	53.0	31.9	9.9	2.5	2.8

Table 3.96: After School Activities For Students In The Community (Not At School)

Grade Level	N of Valid	N of Miss	Strongly Agree	Agree	Undecided	Disagree	Strongly Disagree
4th	1116	61	51.7	29.8	10.8	3.9	3.9
5th	1224	57	51.0	30.1	12.2	3.2	3.5
6th	1844	83	49.2	31.2	13.9	2.5	3.1
7th	1370	59	46.1	33.6	13.9	3.4	2.8
8th	1224	52	46.4	32.0	14.1	4.1	3.3
9th	749	33	44.1	34.7	13.5	5.3	2.4
10th	454	19	41.6	35.9	16.3	3.7	2.4
11th	664	25	39.3	36.1	16.6	5.0	3.0
12th	447	20	41.6	38.5	13.9	3.4	2.7
Total	9092	409	47.0	32.6	13.6	3.6	3.1

Table 3.97: Treatment For Students Who Are Drug And/Or Alcohol Dependent

Grade Level	N of Valid	N of Miss	Strongly Agree	Agree	Undecided	Disagree	Strongly Disagree
4th	1112	65	58.3	26.5	9.3	2.4	3.5
5th	1225	56	58.3	27.9	9.6	1.1	3.0
6th	1845	82	56.6	27.3	10.6	2.5	3.0
7th	1373	56	55.6	26.6	13.0	2.2	2.6
8th	1224	52	52.6	28.8	12.3	2.7	3.5
9th	751	31	51.5	31.2	10.5	4.4	2.4
10th	452	21	53.8	29.9	11.1	2.4	2.9
11th	664	25	47.9	30.7	15.2	3.0	3.2
12th	446	21	47.1	35.7	12.8	1.8	2.7
Total	9092	409	54.7	28.5	11.4	2.4	3.0

Table 3.98: School Policy On Student Use Of Drugs And Alcohol At School

Grade Level	N of Valid	N of Miss	Strongly Agree	Agree	Undecided	Disagree	Strongly Disagree
4th	1117	60	61.8	26.4	6.0	2.2	3.6
5th	1225	56	62.6	27.9	5.6	1.3	2.5
6th	1845	82	62.3	26.7	6.1	2.4	2.4
7th	1375	54	58.5	28.7	7.5	2.5	2.8
8th	1223	53	56.5	29.4	8.6	2.3	3.2
9th	746	36	53.2	32.6	9.0	2.9	2.3
10th	453	20	52.3	30.2	9.9	4.0	3.5
11th	664	25	51.7	30.1	9.8	3.9	4.5
12th	448	19	52.0	33.3	8.7	2.5	3.6
Total	9096	405	58.4	28.7	7.4	2.5	3.0

Table 3.99: School Policy On Student Violence/Bullying

Grade Level	N of Valid	N of Miss	Strongly Agree	Agree	Undecided	Disagree	Strongly Disagree
4th	1118	59	62.6	25.3	6.2	2.0	3.9
5th	1219	62	62.3	27.3	5.0	2.2	3.1
6th	1846	81	63.4	24.6	6.8	2.7	2.4
7th	1373	56	58.6	27.1	8.2	2.8	3.3
8th	1222	54	57.2	28.0	8.2	2.9	3.7
9th	749	33	53.5	30.4	9.2	3.9	2.9
10th	453	20	53.4	29.8	7.5	5.5	3.8
11th	664	25	51.1	31.2	9.3	3.6	4.8
12th	445	22	50.3	33.9	9.0	3.1	3.6
Total	9089	412	58.8	27.6	7.4	2.9	3.3

Table 3.100: Having A Security (Police) Officer At The School

Grade Level	N of Valid	N of Miss	Strongly Agree	Agree	Undecided	Disagree	Strongly Disagree
4th	1118	59	64.5	20.7	8.4	3.0	3.5
5th	1226	55	65.8	22.4	7.2	1.9	2.7
6th	1844	83	62.5	21.9	10.8	1.8	2.9
7th	1376	53	59.8	25.4	9.0	3.0	2.8
8th	1230	46	57.0	24.8	11.8	2.8	3.7
9th	749	33	54.9	28.8	10.8	3.2	2.3
10th	454	19	51.8	30.2	12.1	2.9	3.1
11th	665	24	53.1	26.6	12.0	3.3	5.0
12th	445	22	49.2	30.8	13.5	3.8	2.7
Total	9107	394	59.5	24.5	10.2	2.6	3.1

Table 3.101: Drug Screening Of Students By The School

Grade Level	N of Valid	N of Miss	Strongly Agree	Agree	Undecided	Disagree	Strongly Disagree
4th	1115	62	53.0	23.4	12.6	4.8	6.1
5th	1226	55	55.6	23.3	13.4	2.6	5.1
6th	1842	85	55.5	21.7	14.3	3.7	4.7
7th	1376	53	52.4	22.1	15.8	4.7	4.9
8th	1224	52	51.0	23.4	15.0	5.0	5.6
9th	747	35	50.9	24.5	14.1	5.1	5.5
10th	453	20	46.8	28.5	16.1	4.9	3.8
11th	663	26	47.1	26.4	14.0	3.9	8.6
12th	449	18	48.8	28.1	14.0	3.3	5.8
Total	9095	406	52.4	23.7	14.3	4.2	5.4