

The logo for PRIDE Surveys is centered within a white-bordered square. The word "PRIDE" is in a large, white, serif font, with a thin white line graph overlaid on the letters. Below it, the word "Surveys" is in a smaller, white, serif font. The background of the square is a dark blue grid.

PRIDE Surveys

International Survey Associates

A MESSAGE FOR EDUCATION PROVIDERS

www.pridesurveys.com





International Survey Associates

A MESSAGE FOR EDUCATION PROVIDERS

Dear Educators and School Board Members:

According to Education Week, a major study demonstrates that addressing school climate through research can lead to greater academic achievement. "It's a shift in perspective from a focus on the curriculum and individual teachers to focusing on the collective work of the school," said Elaine Allensworth, co-author of the report. "A lot of times people think school climate is something you work on and take care of so you can get to the real work of teaching and learning, but what we find is learning is inherently social and emotional. If students don't feel safe and engaged, they aren't learning."*

Pride Surveys collects reliable and valid data from students, parents and school faculty/staff, giving you a data-rich context for adolescent development.

Since 1982 we have conducted more than 77,000 school building level surveys from over 15 million respondents in all 50 states. Our Teaching and Learning Environment surveys have been vetted by the Department of Safe and Supportive Schools as a valid and reliable indicator of school climate.

Let us help you keep your schools safe, healthy, and academically strong. I look forward to hearing from you.

*http://blogs.edweek.org/edweek/inside-school-research/2018/03/how_principals_drive_student_improvement.html

Sincerely,

Jay Gleaton

President and CEO

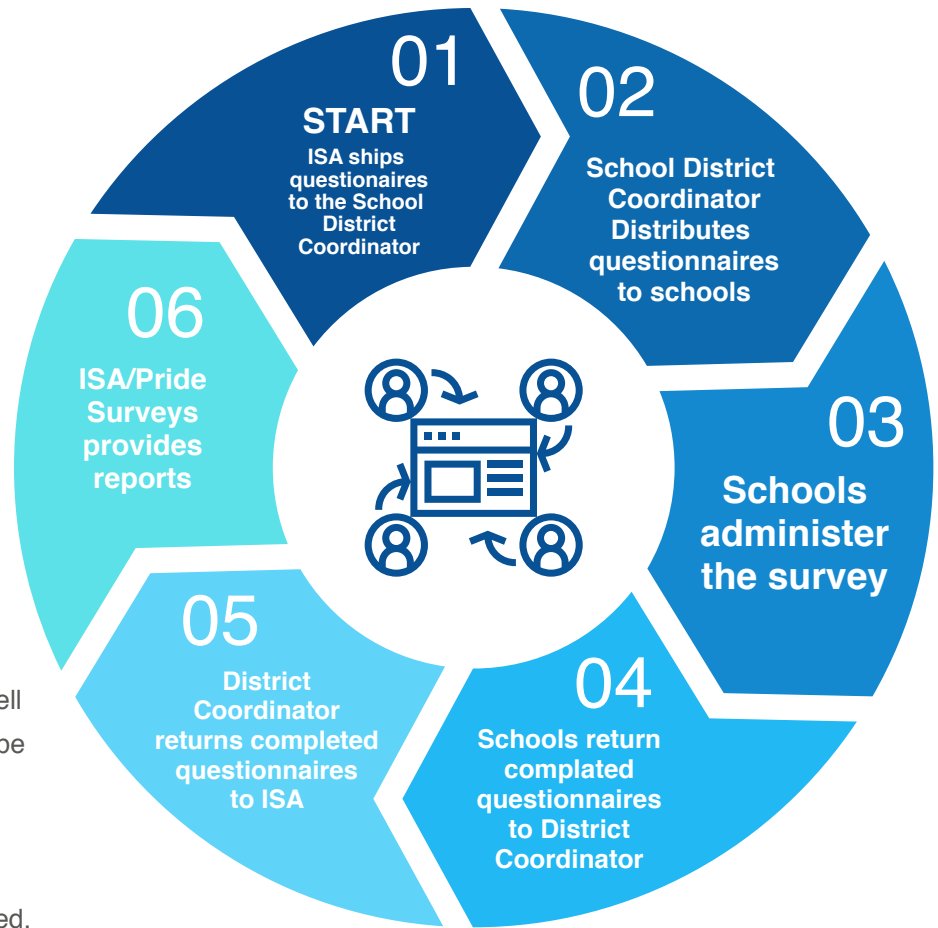
✉ jay.gleaton@pridesurveys.com

Our Learning and Teaching Environment Surveys have been independently evaluated as valid tools for the measurement of school climate by the National Center on Safe and Supportive Learning Environments. They also provide the four core measures and can help coalitions work with schools.



Easy, Fast, and Low Cost Data Collection

When you conduct a Pride Survey, you tell us the number and names of schools to be surveyed, and the number of students in each school. If using the parent and faculty/ staff instruments you will provide the number of questionnaire forms needed.



1

For the most representative findings, cost effectiveness, and to avoid singling out classes or students, we recommend that you survey all students rather than conduct a random sample.

2

A survey coordinator will receive and disseminate the questionnaires to school faculty who will conduct the survey. Detailed instructions are provided for the district, the school building coordinators and faculty administering the survey.

3

After the questionnaires have been completed by the respondents, the questionnaires are returned to ISA/Pride Surveys where the instruments are scanned and analyzed. Our proprietary computer code can detect obvious distortions, and those questionnaires are eliminated from the findings. Detailed electronic reports are emailed to you or, if you prefer, are returned to you on CD-Rom*. In addition, you receive a hard copy executive summary for each district and school building.

*TES and LES surveys are reported on an intuitive electronic dashboard and DO NOT include a CD.

Note: For Online surveys we use the same basic process, however we provide links to the survey and secure passcodes for the moderators via email.



Products and Services

Our Family of Questionnaires offers survey instruments and analysis for students, parents, and school faculty/staff. Each of our surveys goes through extensive testing to assure confidence in the data being reported. Samples of each instrument and report are available at www.pridesurveys.com/index.php/surveys-we-offer.



QUESTIONNAIRES

▶ **Pride Learning Survey (LES)**

Appropriate for grades 6-12, this survey is primarily designed to gather information on school life and the learning environment, such as student-teacher interaction, schoolwork, and school climate.

▶ **Pride Teaching Survey (TES)**

The Teaching Environment Survey contains 28 parallel items with the student learning survey. Together the learning and teaching surveys give school administrators a rounded view of their schools from the teacher and student perspectives. Community coalitions get core measures and school climate data (bullying, harassment, etc.).

▶ **Parent Engagement and Perception Survey (PEP)**

This survey is an updated version of our Parent Survey and can be tied to the Teaching Environment and the Learning Environment Surveys to help gather a 360 degree view of the perceptions surrounding the school.

▶ **Social Emotional Bullying Behavior Survey**

This survey was developed to measure social and emotional learning outcome for the Second Step(tm) program but can be used independently to evaluate those metrics.



WHY USE PRIDE SURVEYS?

“Pride Surveys has been a vital provider of school, system, and state level culture and climate data to Alabama for over a decade. Their written reports are easy to read and logically constructed while their online dashboard is very intuitive and easy to use. Pride Surveys caters to the needs of their customers and provides valid, reliable and timely data when promised.”

Dr. Tony Thacker
 Job Title: Coordinator, Research and Development
 Organization: ALSDE

Assessment and Planning

Dr. Thacker and his colleagues in Birmingham are on the right track. Research has shown that evaluating school climate gives you a good starting point when looking for positive change within a school system.

Evaluation

Use Pride Surveys data to watch trends. An data-driven education plan incorporates ongoing assessments to evaluate the effectiveness of education strategies.

Public Awareness

The results of assessment can be used to raise community awareness about the nature of the problem and guide the selection of programs most relevant to the school’s needs.

Sustainability

In a time of diminishing educational resources, many school districts have found that data can lead to award-winning grants. In fact, the Federal government and most state agencies hold grantees accountable for using resources wisely and achieving program results.




What if my state already conducts a statewide survey?

The extent and nature of school climate issues can vary widely from one school building to the next – even in the same school district. Many statewide surveys furnish county-level data at best. You cannot extrapolate sub-county data from county-level estimates. The best most effective individual school policy decisions are made using school level data.

**A SURVEY COMPANY
 YOU CAN TRUST:
 RELIABLE, VALID
 SOLUTIONS**

PRIDE Surveys

For More Information

-  www.pridesurveys.com
-  800.279.6361
-  info@pridesurveys.com

TO PLACE AN ORDER

IT'S EASY TO
ORDER ONLINE

 www.pridesurveys.com

 800.279.6361

 770.726.9327

 **ISA / PRIDE SURVEYS**

2140 New Market Pkwy. SE
Suite 116
Marietta, GA 30067

ISA
INTERNATIONAL SURVEY ASSOCIATES

 www.facebook.com/ISAPrideSurveys

 @ISAPrideSurveys

 Pride Surveys/International Survey Associates